



## Maximum Retail Prices for Agricultural Electrical Products

Effective : 06th June 2018

- Motor Starters
- Submersible Pump Starters
- Spares for Starters
- Flat Cables for Submersible Pumps

Think Starter Think BCH



BCH ELECTRIC LIMITED

## Modern facilities at Faridabad & Rudrapur



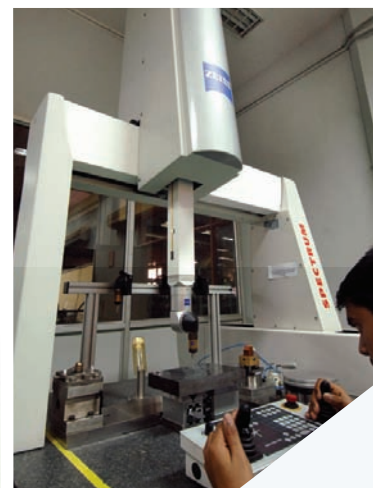
BCH ELECTRIC LIMITED

### Our Strengths:

- ◆ State-of-the-art product development and R&D
- ◆ Modern manufacturing facilities
- ◆ Tool room with latest facilities
- ◆ Serving customers for five decades
- ◆ Presence in ~50 locations
- ◆ 650 channel partners
- ◆ ISO 14001:2015 and ISO 9001:2015 certified company

### Core Values:

- ◆ Integrity
- ◆ Nurturing People
- ◆ Commitment to Customers
- ◆ Striving for Excellence
- ◆ Long Term Thinking



### Quality Policy

We are committed to provide products and services meeting or exceeding customers needs and expectations.

Continual improvement and learning aimed at customer satisfaction through involvement of people shall be the guiding principle.

### Health & Safety Policy

It is our policy to comply with applicable statutory and regulatory requirements related to health and safety.

We shall endeavor to achieve this by providing safe working conditions and promoting awareness through training.

[www.bchindia.com](http://www.bchindia.com)





# Motor Starters & Submersible Pump Starters

## Motor Starters

01-06

	Page No.
■ Shakti - DOL (Shakti WP, Shakti) & SASD	01
■ Shakti - FASD, Auto-DOL & DOL SPS	02
■ Citation - DOL (With NHD & Citation D Contactor) & SASD	03
■ Citation - FASD, Higher HP FASD Starters & Reversing DOL	04
■ FASD with EOOCR, Industrial DOL & Wireless Modem	05
■ Mini Manual 1Ph & 3Ph, DOL-1Ph & Manual Star-Delta	06

## Submersible Pump Starters

07-08

■ Citation - SPS DOL & SD (2 Position & 3 Position)	07
■ SPS - 1 PH DOL (With CPG Contactor & Mini Manual)	08

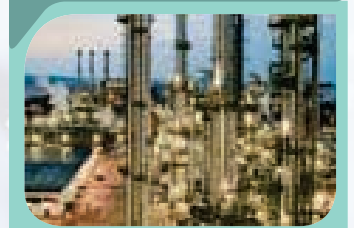
## Others

09-15

■ Oil Immersed DOL & Star Delta Starters (SASD & FASD)	09
■ Contactors - (2P CPG & 4P NHD) & Citation Series	10
■ Overload Relays - Citation 3P, WP 3P & 2P	11
■ Spares for Motor Starters & Panels	12
■ Spares for Motor Starters (Contact Kits)	13
■ Spares for Motor Starters (Contact Carrier & Coils)	14
■ Auto Switch, Dual Meter (Combination of Ammeter & Voltmeter)	15

MCB / MCCB 16

Wires & Cables 17



# Motor Starters-Shakti ..... BCH

## Shakti WP DOL Starter (190-400V AC Coil)

HSN CODE : 8536 (GST 18%)

Cat Code	HP / KW at 3Ø, 415V, 50Hz	Overload Relay Range (A)	Contactor Type	Contactor rating	MRP [₹]	Cat Code (Open Execution)	MRP [₹]
SAWPGZA	2 / 1.5	2.4 - 3.8	Shakti	12 A	2180		
SAWPHZA	3 / 2.2	3.8 - 6.0	Shakti	12 A	2180		
SAWPJZA	5 / 3.7	6.0 - 9.3	Shakti	12 A	2180		
SAWPGZ	2 / 1.5	2.4 - 3.8	Shakti	20 A	2210	SAWPGZI	2150
SAWPHZ	3 / 2.2	3.8 - 6.0	Shakti	20 A	2210	SAWPHZI	2150
SAWPJZ	5 / 3.7	6.0 - 9.3	Shakti	20 A	2210	SAWPJZI	2150
SAWPKZ	7.5 / 5.5	8.9 - 13.5	Shakti	20 A	2210	SAWPKZI	2150
SAWPLZ	10 / 7.5	13.2 - 20.0	Shakti	20 A	2350	SAWPLZI	2250
SAWPMZ	12.5 / 10	17.4 - 24.0	Shakti	20 A	2465	SAWPMZI	2360



## Shakti WP DOL Starter (Big Enclosure)

HSN CODE : 8536 (GST 18%)

Cat Code	HP / KW at 3Ø, 415V, 50Hz	Overload Relay Range (A)	Contactor Type	Contactor rating	MRP [₹]
SAWPKZ-BT	7.5 / 5.5	8.9 - 13.5	Shakti	20 A	2845
SAWPLZ-BT	10 / 7.5	13.2 - 20.0	Shakti	20 A	2990
SAWPMZ-BT	12.5 / 10	17.4 - 24.0	Shakti	20 A	3145



## Shakti DOL Starter (190-400V AC Coil)

HSN CODE : 8536 (GST 18%)

Cat Code	HP / KW at 3Ø, 415V, 50Hz	Overload Relay Range (A)	Contactor Type	Contactor rating	MRP [₹]	Cat Code (Open Execution)	MRP [₹]
SAGZ	2 / 1.5	2.4 - 3.8	Shakti	20 A	2355	SAGZI	2280
SAHZ	3 / 2.2	3.8 - 6.0	Shakti	20 A	2355	SAHZI	2280
SAJZ	5 / 3.7	6.0 - 9.3	Shakti	20 A	2355	SAJZI	2280
SAKZ	7.5 / 5.5	8.9 - 13.5	Shakti	20 A	2355	SAKZI	2280
SALZ	10 / 7.5	13.2 - 20.0	Shakti	20 A	2565	SALZI	2500
SAMZ	12.5 / 10	17.4 - 24.0	Shakti	20 A	2675	SAMZI	2600



## Shakti Semi Automatic Star Delta Starter with 260-400V AC Coil

HSN CODE : 8536 (GST 18%)

Cat Code	HP / KW at 3Ø, 415V, 50Hz	Overload Relay Range (A)	Contactor Type	Contactor rating	MRP [₹]
SASSGLEG	3 / 2.2	2.4 - 3.8	Shakti	16 A	7240
SASSHLEG	5 / 3.7	3.8 - 6.0	Shakti	16 A	7240
SASSJLEG	10 / 7.5	6.0 - 9.3	Shakti	16 A	7240
SASSKLEG	15 / 11	8.9 - 13.5	Shakti	16 A	7240
SASSKLEG/LOR	15 / 11	13.2 - 20.0	Shakti	16 A	7390
SASSKLEG-M	15 / 11	17.4 - 24.0	Shakti	16 A	7580



For 380 - 415 V Coil Voltage replace Suffix 'G' by 'N'

**Shakti Fully Automatic Star Delta Starter with 260-400V AC Coil & Electronic Timer**

HSN CODE : 8536 (GST 18%)

Cat Code	HP / KW at 3Ø, 415V, 50Hz	Overload Relay Range (A)	Contactor Type	Contactor rating	MRP [₹]
SASAGLEG	3 / 2.2	2.4 - 3.8	Shakti	16 A	8230
SASAHLEG	5 / 3.7	3.8 - 6.0	Shakti	16 A	8230
SASAJLEG	10 / 7.5	6.0 - 9.3	Shakti	16 A	8230
SASAKLEG	15 / 11	8.9 - 13.5	Shakti	16 A	8230
SASAKLEG/LOR	15 / 11	13.2 - 20.0	Shakti	16 A	8375
SASAKLEG/MOR	15 / 11	17.4 - 24.0	Shakti	16 A	8550

For 380 - 415 V Coil Voltage replace Suffix 'G' by 'N'

**Shakti Auto-Start DOL Starter ( With 5-Sec delay Auto Switch )**

HSN CODE : 8536 (GST 18%)

Description				Standard Model		Premium Model	
HP / KW at 3Ø, 415V, 50Hz	Overload Relay Range (A)	Contactor Type	Contactor rating	Cat Code	MRP [₹] Standard Model	Cat Code	MRP [₹] Premium Model
2 / 1.5	2.4 - 3.8	Shakti	20 A	ASAGZ	3210	ASXGZ	3645
3 / 2.2	3.8 - 6.0	Shakti	20 A	ASAHZ	3210	ASXHZ	3645
5 / 3.7	6.0 - 9.3	Shakti	20 A	ASAJZ	3210	ASXJZ	3645
7.5 / 5.5	8.9 - 13.5	Shakti	20 A	ASAKZ	3210	ASXKZ	3645
10 / 7.5	13.2 - 20.0	Shakti	20 A	ASALZ	3385	ASXLZ	3820
12.5 / 10	17.4 - 24.0	Shakti	20 A	ASAMZ	3605	ASXMZ	4045

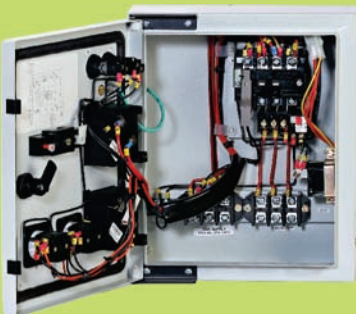
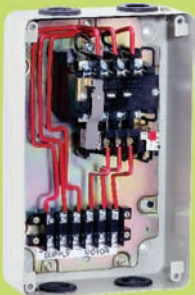
**Shakti DOL Submersible Pump Starter (with Auto Switch)**

HSN CODE : 8536 (GST 18%)

Description			2 Position Selection (Auto - Manual)		3 Position Selection (Manual - Manual SPP - Auto)	
Overload Relay Range (A)	Contactor Type	Contactor Rating	Cat Code	MRP [₹]	Cat Code	MRP [₹]
2.4 - 3.8	Shakti	20 A	CPEASAGZ	6220	CPEYSAGZ	6440
3.8 - 6.0	Shakti	20 A	CPEASAHZ	6220	CPEYSAHZ	6440
6.0 - 9.3	Shakti	20 A	CPEASAJZ	6220	CPEYSAJZ	6440
8.9 - 13.5	Shakti	20 A	CPEASAKZ	6220	CPEYSAKZ	6440
13.2 - 20.0	Shakti	20 A	CPEASALZ	6770	CPEYSALZ	7000
17.4 - 24.0	Shakti	20 A	CPEASAMZ	7080	CPEYSAMZ	7330

For 380 - 415 V coil voltage replace suffix "Z" with "N" in the Cat. Code

For Auto switch with 5 min time delay option, kindly contact nearest sales office



# Motor Starters-Citation..... BCH

## Citation DOL Motor Starter

HSN CODE : 8536 (GST 18%)

Cat Code	HP / KW at 3Ø, 415V, 50Hz	Overload Relay Range (A)	Contactor Type	Contactor Rating	MRP [₹]	Cat Code (Open Execution)	MRP [₹]
NADLEN	0.5 / 0.37	0.72 - 1.14	C00N	16 A	3115	NADLENI	3045
NAELEN	0.75 / 0.55	1.07 - 1.70	C00N	16 A	3115	NAELENI	3045
NAFLEN	1 / 0.75	1.58 - 2.50	C00N	16 A	3115	NAFLENI	3045
NAGLEN	2 / 1.5	2.4 - 3.8	C00N	16 A	3115	NAGLENI	3045
NAHLEN	3 / 2.2	3.8 - 6.0	C00N	16 A	3115	NAHLENI	3045
NAJLEN	5 / 3.7	6.0 - 9.3	C00N	16 A	3115	NAJLENI	3045
NAKLEN	7.5 / 5.5	8.9 - 13.5	C00N	16 A	3115	NAKLENI	3045
NALLEN	10 / 7.5	13.2 - 20.0	C00N	16 A	3300	NALLENI	3190
NALLEN/MOR	12.5 / 10	17.4 - 24.0	CP20	20 A	3960	NALLENI/MOR	3885

## Citation DOL Motor Starter

### (A) with NHD Contactor

HSN CODE : 8536 (GST 18%)

Cat Code	HP / KW at 3Ø, 415V, 50Hz	Overload Relay Range (A)	Contactor Type	Contactor Rating	MRP [₹]
NAMLEN	15 / 11	17.4 - 24.0	N0N	25A	4905
NAPLEN/MOR	15 / 11	17.4 - 24.0	N01N	32A	6690
NAPLEN	20 / 15	23.0 - 32.0	N01N	32A	7220
NANLEN	20 / 15	22.0 - 30.0	N1N	40A	7990
NACT1LEN	25 / 18.5	24.4 - 39.0	N1N	40A	12260

### (B) With Citation Contactor

Cat Code	HP / KW at 3Ø, 415V, 50Hz	Overload Relay Range (A)	Contactor Type	Contactor Rating	MRP [₹]
NACT2LEDM	30 / 22	37.6 - 60.0	Citation D	40A	13965
NACT2LEEM	40 / 30	37.6 - 60.0	Citation E	70A	18150

## Citation Semi Automatic Star Delta Starter with NHD Contactor

HSN CODE : 8536 (GST 18%)

Cat Code	HP / KW at 3Ø, 415V, 50Hz	Overload Relay Range (A)	Contactor Type	Contactor Rating	MRP [₹]
NASSGLEN	3 / 2.2	2.4 - 3.8	C00N	16A	7550
NASSHLEN	5 / 3.7	3.8 - 6.0	C00N	16A	7550
NASSJLEN	10 / 7.5	6.0 - 9.3	C00N	16A	7550
NASSKLEN	15 / 11	8.9 - 13.5	C00N	16A	7550
NASSKLEN/LOR	15 / 11	13.2 - 20.0	C00N	16A	7750
NASSLLEN	20 / 15	13.2 - 20.0	N0N	25A	11400
NASSMLEN	25 / 18.5	17.4 - 24.0	N0N	25A	11400
NASSPLEN	35 / 26	23.0-32.0	N0N	25A	11740
NASS01PLEN	36 / 26	23.0 - 32.0	N01N	32A	14270
NASSNLEN	35 / 26	22.0 - 30.0	N1N	40A	20505
NASS01CT1LEN	40/30	24.4-39.0	N01N	32A	21430

Note : For other Coil Voltages refer table on page 14

# Motor Starters-Citation..... BCH

## Citation Fully Automatic Star Delta Starter with NHD Contactor & Pneumatic Timers

HSN CODE : 8536 (GST 18%)

Cat Code	HP / KW at 3Ø, 415V, 50Hz	Overload Relay Range (A)	Contactor Type	Contactor Rating	MRP [₹]
NASAGLEN	3 / 2.2	2.4 - 3.8	C00N	16A	11350
NASAHLEN	5 / 3.7	3.8 - 6.0	C00N	16A	11350
NASAJLEN	10 / 7.5	6.0 - 9.3	C00N	16A	11350
NASAKLEN	15 / 11	8.9 - 13.5	C00N	16A	11350
NASAKLEN/LOR	15 / 11	13.2 - 20.0	C00N	16A	11505
NASALLEN	20 / 15	13.2 - 20.0	N0N	25A	13120
NASAMLEN	25 / 18.5	17.4 - 24.0	N0N	25A	13120
NASA01PLEN	35 / 26	23.0 - 32.0	N01N	32A	16440
NASANLEN	35 / 26	22.0 - 30.0	N1N	40A	23060
NASACT1LEN	40 / 30	24.4 - 39.0	N1N	40A	28480

Note : For other Coil Voltages refer table on page 14

## Citation Fully Automatic Star Delta Starter with Citation M Contactor & Pneumatic Timers

HSN CODE : 8536 (GST 18%)

Cat Code	HP / KW at 3Ø, 415V, 50Hz	Overload Relay Range (A)	Contactor Type	Contactor Rating	MRP [₹]
NASACT1LEDM	40 / 30	24.4 - 39.0	D	40A	33170
NASACT2LEDM	50 / 37	37.6 - 60.0	D	40A	33700
NASACT2LEEM	75 / 55	37.6 - 60.0	E	70A	57615
NASACT3LEEM	85 / 65	56.4 - 90.0	E	70A	61280
NASACT3LECM5M	100 / 75	56.4 - 90.0	M-5	110A	79010
NASACT4LECM5M	135 / 100	84.6 - 135.0	M-5	110A	80780
NASACT4LENM	150 / 110	84.6 - 135.0	N	140A	88820
NASACT5LECM6M	250 / 185	131.6 - 210.0	S	300A	150695
NASACT6LECM6M	375 / 280	188.0 - 300.0	S	300A	170470

Note : For other Coil Voltages refer table on page 14

## DOL Reversing Starter

HSN CODE : 8536 (GST 18%)

Cat Code	HP / KW at 3Ø, 415V, 50Hz	Overload Relay Range (A)	Contactor Type	Contactor Rating	MRP [₹]
NARFLEN	1/0.75	1.58 - 2.50	C00N	16 A	8245
NARGLEN	2/1.5	2.4 - 3.8	C00N	16 A	8245
NARHLEN	3/2.2	3.8 - 6.0	C00N	16 A	8245
NARJLEN	5/3.7	6.0 - 9.3	C00N	16 A	8245
NARKLEN	7.5/5.5	8.9 - 13.5	C00N	16 A	8245
NARLLEN	10/7.5	13.2 - 20.0	N0N	25 A	10070
NARMLLEN	15/11	17.4 - 24.0	N1N	40 A	11285
NARNLEN	20/15	22.0 - 30.0	N1N	40 A	16580



# Motor Starters..... BCH

## Fully Automatic Automatic Star Delta Starter with Citation M Contactor, Pneumatic Timer & Electronic Over Current Relay with Ammeter & Voltmeter

HSN CODE : 8536 (GST 18%)

Cat Code	HP / KW at 3Ø, 415V, 50Hz	EOCR Range (A)	Contactor Type (Citation)	Contactor Rating (A)	MRP [₹]
NASASS60LEDM-P	50 / 37	5-60 Amp	D	40A	36245
NASASS60LEEM-P	75 / 55	5-60 Amp	E	70A	60335
NASA2CTD1CLEM5M-P	100/ 75	0.5-6 Amp	M-5	110A	86275

## Industrial DOL Starters with Freedom Contactor & Overload Relay

HSN CODE : 8536 (GST 18%)

Cat Code	HP / KW at 3Ø, 415V, 50Hz	Overload Relay Range (A)	Contactor Type	Contactor Rating	MRP [₹]
CEBFM	0.37/0.5	1.0-1.4	Freedom	9 A	Price On request
CEBGM	0.55/0.75	1.3-1.8	Freedom	9 A	
CEBHM	0.75/1.0	1.7-2.4	Freedom	9 A	
CEBJM	1.1/1.5	2.2-3.1	Freedom	9 A	
CEBKM	1.5/2.0	2.8-4.0	Freedom	9 A	
CEBMM	2.2/3.0	4.5-6.5	Freedom	9 A	
CEBPM	3.7/5.0	7.5-11	Freedom	9 A	
CECPM	3.7/5.0	7.5-11	Freedom	12 A	
CECQM	5.5/7.5	10-14	Freedom	12 A	
CEDQM	5.5/7.5	10-14	Freedom	18 A	
CEDRM	7.5/10	13-19	Freedom	18 A	

For other coil voltages, kindly refer coil master table on page 14

## Wireless Modem

(Compatible With The Complete BCH Starter Family)

HSN Code : 8517 62 30 (GST 18%)

Cat Code	Description	MRP [₹]
BCH-GSM	Wireless Modem	5460



# Motor Starters-Mini..... BCH

## 1- Phase Mini Manual Motor Starter upto 4HP (Surface Mounting)

HSN CODE : 8536 (GST 18%)

Cat Code	Recommended HP 1Ø, 240V	Overload Relay Range (A)	MRP [₹]	Cat Code (with UV Coil)	MRP [₹]
AMLE-10-SP	-	0.23 - 0.47	960	AMLEH-10-SP	1290
AMLE-20-SP	-	0.46 - 0.80	960	AMLEH-20-SP	1290
AMLE-30-SP	1 / 8	0.85 - 1.55	960	AMLEH-30-SP	1290
AMLE-40-SP	1 / 6	1.60 - 3.20	960	AMLEH-40-SP	1290
AMLE-50-SP	0.5 / 0.75	3.50 - 6.50	960	AMLEH-50-SP	1290
AMLE-60-SP	1 to 2	6.80 - 11.7	960	AMLEH-60-SP	1290
AMLE-70-SP	2 to 3	11.0 - 20.0	960	AMLEH-70-SP	1290

For flush mounting replace 'E' by 'C' and reduce price by ₹ 50

## 3- Phase Mini Manual Motor Starter upto 10 HP (Surface Mounting)

HSN CODE : 8536 (GST 18%)

Cat Code	Recommended HP at 3Ø, 415V	Overload Relay Range (A)	MRP [₹]	Cat Code (with UV Coil)	MRP [₹]
AMLE-10	-	0.23 - 0.47	1290	AMLEN-10	1475
AMLE-20	-	0.46 - 0.80	1290	AMLEN-20	1475
AMLE-30	0.50 / 0.75	0.85 - 1.55	1290	AMLEN-30	1475
AMLE-40	1.00 / 1.50	1.60 - 3.20	1290	AMLEN-40	1475
AMLE-50	3.00	3.50 - 6.50	1290	AMLEN-50	1475
AMLE-60	5.00	6.80 - 11.7	1290	AMLEN-60	1475
AMLE-70	10.00	11.0 - 20.0	1290	AMLEN-70	1475

For flush mounting replace 'E' by 'C' and reduce price by ₹ 50

## 1-Phase DOL with 2P CPG Contactor & 2P Overload Relay

HSN CODE : 8536 (GST 18%)

Cat Code	HP / KW at 1Ø, 220V, 50Hz	Overload Relay Range (A)	Contactor Type	Contactor Rating	MRP [₹]
NAHBW-SP	0.75 / 0.55	3.8 - 6.0	2P CPG	16A	1875
NAJBW-SP	1 / 0.75	6.0 - 9.3	2P CPG	16A	1875
NAKBW-SP	1.5 / 1.10	8.9 - 13.5	2P CPG	16A	1875
NALBW-SP	2 / 1.5	13.2 - 20.0	2P CPG	25A	2015
NAMBW-SP	3 / 2.2	17.4 - 24.0	2P CPG	25A	2015

## Manual Star Delta Starter (with 260-400V AC Coil)

HSN CODE : 8536 (GST 18%)

Cat Code	HP at 3Ø, 415V, 50Hz	Overload Relay Range (A)	Contactor Type	Contactor Rating	MRP [₹]
HASSGLEG	3 HP	2.4 - 3.8	C00N	16 A	4330
HASSHLEG	5 HP	3.8 - 6.0	C00N	16 A	4330
HASSJLEG	10 HP	6.0 - 9.3	C00N	16 A	4750
HASSKLEG	15 HP	8.9 - 13.5	N0N	25 A	4750

HSN CODE : 8538 (GST 18%)

HASSW15	SPARE SWITCH FOR 15 HP MSD STARTER				2115
---------	------------------------------------	--	--	--	------



# Motor Starters-3Ph SPS. .... BCH



## Citation Submersible Pump Starter with 2-Position Selection (with Auto Switch)

**DOL** **HSN CODE : 8536 (GST 18%)**

Overload Relay Range (A)	Contactor Type	Contactor Rating	DOL			
			Economy (without Short Circuit Protection)		Premium (with Short Circuit Protection)	
			Cat Code	MRP [₹]	Cat Code	MRP [₹]
2.4 - 3.8	C00N	16 A	CPEANAGN*	6750	CPPANAGN*	9440
3.8 - 6.0	C00N	16 A	CPEANAHN*	6750	CPPANAHN*	9440
6.0 - 9.3	C00N	16 A	CPEANAJN*	6750	CPPANAJN*	9440
8.9 - 13.5	C00N	16 A	CPEANAKN*	6750	CPPANAKN*	9440
13.2 - 20.0	C00N	16 A	CPEANALN*	7015	CPPANALN*	9830
17.4 - 24.0	N0N	25 A	CPEANAMN	7300	CPPANAMN	10300
23.0 - 32.0	N01N	32 A	CPEANA01PN	9000	-	-

**STAR DELTA** **HSN CODE : 8536 (GST 18%)**

Overload Relay Range (A)	Contactor Type	Contactor Rating	Star Delta			
			Economy (without Short Circuit Protection)		Premium (with Short Circuit Protection)	
			Cat Code	MRP [₹]	Cat Code	MRP [₹]
6.0 - 9.3	C00N	16 A	CPSDEAJN*	13230	CPSDPAJN*	16000
8.9 - 13.5	C00N	16 A	CPSDEAKN*	13230	CPSDPAKN*	16000
13.2 - 20.0	C00N	16 A	CPSDEALN-C00	13480	--	--
13.2 - 20.0	N0N	25 A	CPSDEALN*	13650	CPSDPALN*	16600
17.4 - 24.0	N0N	25 A	CPSDEAMN*	14020	CPSDPAMN*	17060
23.0 - 32.0	N01N	32 A	CPSDEA01PN	20090	--	--
22.0 - 30.0	N1N	40 A	CPSDEANN	25100	--	--
24.4 - 39.0	N1N	40 A	CPSDEACT1N	26010	--	--

For Auto switch with 5 min time delay option, kindly contact nearest sales office

## Citation Submersible Pump Starter with 3-Position Selection (with Auto Switch)

**DOL** **HSN CODE : 8536 (GST 18%)**

Overload Relay Range (A)	Contactor Type	Contactor Rating	DOL			
			Economy (without Short Circuit Protection)		Premium (with Short Circuit Protection)	
			Cat Code	MRP [₹]	Cat Code	MRP [₹]
1.58 - 2.50	C00N	16 A	CPEYNAFN*	7050	--	--
2.4 - 3.8	C00N	16 A	CPEYNAGN*	7050	--	--
3.8 - 6.0	C00N	16 A	CPEYNAHN*	7050	--	--
6.0 - 9.3	C00N	16 A	CPEYNAJN*	7050	CPPYNAJN*	9840
8.9 - 13.5	C00N	16 A	CPEYNAKN*	7050	CPPYNAKN*	9840
13.2 - 20.0	C00N	16 A	CPEYNALN*	7350	CPPYNALN*	10240
17.4 - 24.0	N0N	25 A	CPEYNAMN*	7630	CPPYNAMN*	10720
23.0 - 32.0	N01N	32 A	CPEYNA01PN	9170	--	--

**STAR DELTA** **HSN CODE : 8536 (GST 18%)**

Overload Relay Range (A)	Contactor Type	Contactor Rating	Star Delta			
			Economy (without Short Circuit Protection)		Premium (with Short Circuit Protection)	
			Cat Code	MRP [₹]	Cat Code	MRP [₹]
3.8 - 6.0	C00N	16 A	CPSDEYHN*	13340	--	--
6.0 - 9.3	C00N	16 A	CPSDEYJN*	13340	CPSDPYJN*	16065
8.9 - 13.5	C00N	16 A	CPSDEYKN*	13340	CPSDPYKN*	16065
13.2 - 20.0	N0N	25 A	CPSDEYLN	13730	CPSDPYLN	16710
17.4 - 24.0	N0N	25 A	CPSDEYMN	14050	CPSDPYMN	17190
23.0 - 32.0	N01N	32 A	CPSDEY01PN	20830	--	--
22.0 - 30.0	N1N	40 A	CPSDEYNN	25950	CPSDPYNN	28660
24.4 - 39.0	N1N	40 A	CPSDEYCT1N	27650	CPSDPYCT1N	32880
37.6 - 60.0	Citation E	70 A	CPSDEYCT2M	43900	CPSDPYCT2M	49420
56.4 - 90.0	Citation E	70 A	CPSDEYECT3M	47770	--	--
56.4 - 90.0	Citation M-5	110 A	CPSDEYCT3M	61770	CPSDPYCT3M	65140
84.6 - 135.0	Citation M-5	110 A	CPSDEYCT4M	64900	CPSDPYCT4M	70570

# Motor Starters 1-Phase SPS

# BCH

## 1-Phase SPS With 2P Contactor + Overload Relay (Ammeter + Voltmeter) with 160-220V AC Coil

HSN CODE : 8536 (GST 18%)

HP at 1Ø, 220V, 50Hz	Overload Relay Range (A)	Contactor Rating	Cat Code	Run Capacitor (mfd)	Start Capacitor (mfd)	MRP [₹]
0.5 / 0.75 HP	3.8 - 6.0	16 Amp	CPNSHBW-SP	25	80/100	3940
			CPNSHBW-SP(RC36)	36	80/100	3940
			CPNSHBW-RC25-SC120	25	100/120	4060
			CPNSHBW-RC30-SC200	30	150/200	4600
1 HP	6.0 - 9.3	16 Amp	CPNSJBW-SP	36	100/120	4040
			CPNSJBW-RC20SC100	20	80/100	4040
			CPNSJBW-RC25SC100	25	80/100	4070
			CPNSJBW-RC50SC100	50	80/100	4190
			CPNSJBW-RC60SC150	60	120/150	4380
			CPNSJBW-RC72SC150	72	120/150	4480
			CPNSJBW-SP(RC30)	30	100/120	4070
			CPNSJBW-SP(RC50)	50	100/120	4190
			CPNSJBW-SP(SC100)	36	80/100	4350
			CPNSJBW-RC36-SC200	36	150/200	4650
			1.5 HP	8.9 - 13.5	16 Amp	CPNSKBW-SP
CPNSKBW-RC30SC120	30	100/120				4350
CPNSKBW-RC36SC120	36	100/120				4370
CPNSKBW-SP(RC36)	36	120/150				4490
CPNSKBW-SP(RC72)	36+36	120/150				4540
2 HP	13.2 - 20.0	16 Amp	CPNSLBW-SP	72	150/200	4710
			CPNSLBW-SP (2RC36)	36+36	150/200	4780
			CPNSLBW-RC100SC150	100	120/150	4740
			CPNSLBW-RC90SC150	45+45	120/150	4740
			CPNSLBW-SP(SC150)	72	120/150	4840
			CPNSLBW-RC72-SC250	72	200/250	5100
3 HP	17.4 - 24.0	25 Amp	CPNSMBW-SP	100	200/250	5370
			CPNSMBW-SP(2RC50)	50+50	200/250	5440
5 HP	23.0 - 32.0	40 A & 16 A	CPNSPBW-SP	100+50	200/250	7590
			CPNSPBW-SP(3RC50)	50+50+50	200/250	7670

For Dry Run Protection (Extra Terminal shall be provided) Kindly add Rs. 160/- for up to 1.5 HP & add Rs. 250/- for 2 & 3 HP in above Prices & suffix "D" in the cat code (i.e. CPNSHBW-SPD)

## 1-Phase SPS With 2 Pole Contactor + Overload Relay (With Ammeter)

HSN CODE : 8536 (GST 18%)

Cat Code	HP at 1Ø, 220V, 50Hz	Relay Range (Amp.)	Contactor Rating	Run Capacitor (mfd)	Start Capacitor(mfd)	MRP [₹]
CPNEHBW-SP	0.5 / 0.75 HP	3.8 - 6.0	16 Amp	25	80/100	3630
CPNEJBW-SP	1 HP	6.0 - 9.3	16 Amp	36	100/120	3790
CPNEKBW-SP	1.5 HP	8.9 - 13.5	16 Amp	50	120/150	4160
CPNELBW-SP	2 HP	13.2 - 20.0	16 Amp	36+36	150/200	4400
CPNEMBW-SP	3 HP	17.4 - 24.0	25 Amp	50+50	200/250	5190
CPNEPBW-SP	5 HP	23.0 - 32.0	40 Amp	50+50+50	200/250	7570

For Dry Run Protection (Extra Terminal shall be provided) Kindly add Rs. 160/- for up to 1.5 HP & add Rs. 250/- for 2 & 3 HP in above Prices & suffix "D" in the cat code (i.e. CPNEHBW-SPD)

## 1-Phase SPS With Mini Manual DOL Starter (With Ammeter + Voltmeter)

HSN CODE : 8536 (GST 18%)

Cat Code	HP at 1Ø, 220V, 50Hz	Relay Range (A)	Run Capacitor (mfd)	MRP [₹]
CPPM50-25-SP	0.5 / 0.75 HP	3.5 - 6.5	25	2685
CPPM50-20-SP	0.5 / 0.75 HP	3.5 - 6.5	20	2685
CPPM50H-25-SP	0.5 / 0.75 HP	3.5 - 6.5	25	3055
CPPM60-36-SP	1 HP	6.8 - 11.7	36	2700
CPPM60-25-SP	1 HP	6.8 - 11.7	25	2700
CPPM60H-36-SP	1 HP	6.8 - 11.7	36	3075
CPPM60-50-SP	1.5 HP	6.8 - 11.7	50	2845
CPPM60H-50-SP	1.5 HP	6.8 - 11.7	50	3240
CPPM70-50-SP	2 HP	11.0 - 20.0	50	2890
CPPM70-36-SP	2 HP	11.0 - 20.0	36	2890
CPPM70H-50-SP	2 HP	11.0 - 20.0	50	3285

# Motor Starters Oil Immersed..... BCH

## DOL Starter

HSN CODE : 8536 (GST 18%)

Cat. Code	Overload Relay Range (A)	HRC Fuse Rating (EE Type) (max)	MRP[₹]
OISWPGT	2.4 - 3.8	16A	2570
OISWPHT	3.8 - 6.0	20A	2570
OISWPJT	6.0 - 9.3	25A	2570
OISWPKT	8.9 - 13.5	36A	2570
OISWPLT	13.2 - 20.0	50A	2570
OISWPMT	17.4 - 24.0	63A	2830

Note : The last alphabet in the Cat No. indicates coil voltage : N-380-415VAC ; T-220-400VAC

## Star Delta Starter - Fully Automatic

HSN CODE : 8536 (GST 18%)

Cat. Code	Overload Relay Range (A)	HRC Fuse Rating (EE Type) (max)	MRP[₹]
OISDAWPJ*	6.0 - 9.3	20A	7460
OISDAWPK*	8.9 - 13.5	32A	7460
OISDAWPL*	13.2 - 20.0	35A	7460
OISDAWPM*	17.4 - 24.0	50A	7970
OISDAWPP*	23.0 - 32.0	63A	8050

## Star Delta Starter - Semi Automatic

HSN CODE : 8536 (GST 18%)

Cat. Code	Overload Relay Range (A)	HRC Fuse Rating (EE Type) (max)	MRP[₹]
OISDSWPJN	6.0 - 9.3	20A	6690
OISDSWPKN	8.9 - 13.5	32A	6690
OISDSWPLN	13.2 - 20.0	35A	6690
OISDSWPMN	17.4 - 24.0	50A	7190
OISDSWPPN	23.0 - 32.0	63A	7280

## Star Delta Starter - Fully Automatic with Auto Unit SPP & 3 Position Auto Manual Switch

HSN CODE : 8536 (GST 18%)

Cat. Code	Overload Relay Range (A)	HRC Fuse Rating (EE Type) (max)	MRP[₹]
OISDYWPJY	6.0 - 9.3	20A	8730
OISDYWPKY	8.9 - 13.5	32A	8730
OISDYWPLY	13.2 - 20.0	35A	8730
OISDYWPMN	17.4 - 24.0	50A	9280
OISDYWPPY	23.0 - 32.0	63A	9360

## Star Delta Starter - Fully Automatic with Ammeter & Voltmeter

HSN CODE : 8536 (GST 18%)

Cat. No.	Overload Relay Range (A)	HRC Fuse Rating (EE Type) (max)	MRP[₹]
OISDPYWPLY	13.2 - 20.0	35 Amp.	10730
OISDPYWPLN	13.2 - 20.0	35 Amp.	10730
OISDPYWPMY	17.4 - 24.0	50 Amp.	11290
OISDPYWPMN	17.4 - 24.0	50 Amp.	11290
OISDPYWPPY	23.0 - 32.0	63 Amp.	11380
OISDPYWPPN	23.0 - 32.0	63 Amp.	11380

'N' for 380-415VAC coil & 'Y' for 240-400VAC coil

### Spares for Oil Starter

HSN CODE : 8538 (GST 18%)

Description	Cat No.	MRP[₹]	
Contact kit without coil for DOL - Power & Auxiliary contacts (set of fix contact, moving contact, hex screws, spring washer, spring clip, spring cap, contact spring)	OCK	365	
Power kit without coil for all 3 contactor of star delta starter (fix contact, moving contact, hex screw, spring washer, spring clip, spring cap, contact spring )	Upto L Relay - OCKSD20	900	
	M, P Relay OCKSD30	1040	
Auxiliary Contact Kit set for Star Delta Starter	Upto L Relay - OCKSDAUX20	235	
	M, P Relay OCKSDAUX30	235	
Coil -Main & Delta Contactor	220-400V	OCT	385
	240-400V	OCY	385
	380-415V	OCN	385
Coil -Star Contactor	220-400V	OCT-STAR	265
	240-400V	OCY-STAR	265
	380-415V	OCN-STAR	265
ON-Push Button	OPB-ON	110	
OFF-Push Button	OPB-OFF	110	
Incoming Mounting KIT for 20A	OCTKSD20	120	
Incoming Mounting KIT for 30A	OCTKSD30	165	

Overload Relay for Oil Starter - Pls refer along with all other Overload Relay Page 11.

Effective from 06.06.2018



# Contactors ..... BCH

## 2 Pole Contactor

HSN CODE : 8536 (GST 18%)

Cat Code	AC# Rating at 240 V AC		MRP[₹]
	AC-1 (A)	AC-3 (A)	
CPG216*	25	16	970
CPG225*	45	25	1385
CPG240*	50	40	1735

\* For Coil voltages , kindly refer Page 14

## NHD Series 4 Pole Contactor

HSN CODE : 8536 (GST 18%)

Cat Code	AC# Rating at 415 V AC			MRP[₹]
	AC-1 (A)	AC-3 (A)	HP / KW	
C00N*	20	16	10 / 7.5	1900
CP20*	30	20	12.5 / 9.3	2455
N0N*	32	25	15 / 11	3140
N01N*	40	32	20 / 15	3990
N1N*	50	40	25 / 18.5	4860

HSN CODE : 8538 (GST 18%)

001CB11	Auxiliary Contact Blocks - NHD	1 NO+1NC	225
001CB20	Auxiliary Contact Blocks - NHD	2NO	225
001CB02	Auxiliary Contact Blocks - NHD	2NC	225

## Definite Purpose Contactor

HSN CODE : 8536 (GST 18%)

Current Rating AC-3 (A)	Single Pole		SPN		Double Pole	
	Cat Code	MRP[₹]	Cat Code	MRP[₹]	Cat Code	MRP[₹]
20					CPD202BL	740
25	CPD251CK	670	CPD251NCK	690	CPD252H	780
40	CPD401CK	730	CPD401NCK	790	CPD402H	820

\*For other coil voltages, kindly refer Table on Page 14.

## Citation Series 3 Pole Contactor

HSN CODE : 8536 (GST 18%)

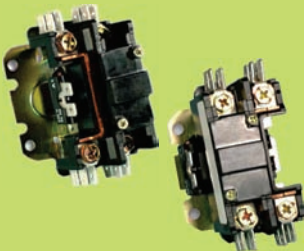
Contactor Size	AC# Rating at 415 V		Cat Code	MRP[₹]	Cat Code	MRP[₹]	Cat Code	MRP[₹]
	AC-3 (A)	HP / KW						
C4	32	20 / 15	C4NE22*	4310	C4NE11*	4030	C4NE00*	3570
D	40	30 / 22	MC10DN22*	6815	MC10DN11*	6000	MC10DN00*	5955
E	70	50 / 37	MC10EN22*	12220	MC10EN11*	11970	MC10EN00*	11745

\*For other coil voltages, kindly refer Table on Page 14.

HSN CODE : 8536 (GST 18%)

Contactor Size	AC# Rating at 415 V			Aux. Contact	Cat Code	MRP[₹]
	AC-1 (A)	AC-3 (A)	HP / KW			
L	140	80	63 / 40	1 NO + 1 NC	MCE15LN3*5	10250
M	150	95	62 / 47	1 NO + 1 NC	MCE15M0N3*5	12300
M-5	150	110	80 / 60	1 NO + 1 NC	MCE15MN3*5	15100
N	300	140	100 / 75	1 NO + 1 NC	MCE15NN3*7	20050
Q	300	185	120 / 90	1 NO + 1 NC	MCE15QN3*7	25050

\*For other coil voltages, kindly refer Table on Page 14.



# Overload Relay for Starters ..... BCH

## Citation-M Overload Relays

( Direct Mounting ) with built in single phase protection

Cat Code	Overload Relay Range (A)	HSN CODE : 8536 (GST 18%)		HSN CODE : 8538 (GST 18%)	
		MRP [₹]	Terminal Block for individual mounting	MRP [₹]	
MC305ANA3A	0.195 - 0.31	1275			
MC305ANA3B	0.30 - 0.48	1275			
MC305ANA3C	0.47 - 0.75	1275			
MC305ANA3D	0.72 - 1.14	1275			
MC305ANA3E	1.07 - 1.70	1275	(Incoming) MC305TB1	105	
MC305ANA3F	1.58 - 2.50	1275	(Outgoing) MC305TB3	105	
MC305ANA3G	2.40 - 3.80	1275			
MC305ANA3H	3.80 - 6.00	1275			
MC305ANA3J	6.00 - 9.30	1275			
MC305ANA3K	8.90 - 13.50	1275			
MC305ANA3L	13.20 - 20.0	1420	(Incoming) MC305TB2	105	
MC305ANA3M	17.4 - 24.0	1420	(Outgoing) MC305TB3	105	
MC305ANA3N*	22.0 - 30.0	2010			
MC305ANA3P*	23.0 - 32.0	2040	(Outgoing) MC305TB4	105	

\*Overload relay type 'N' must be used with terminal block MC305TB3,

# Overload relay type 'P' must be used with terminal block MC305TB4

## DIN rail mounting kit with incoming terminal block

Cat Code	HSN CODE : 8536 (GST 18%)	
	Relay Range	MRP [₹]
MC305DM1	A to K	180
MC305DM2	L to N	180

## CT Operated Overload Relays-Individual Mounting

Cat Code	HSN CODE : 8536 (GST 18%)	
	Overload Relay Range (A)	MRP [₹]
CT1MC305ANA3C	24.4 - 39.0	2250
CT2MC305ANA3C	37.6 - 60.0	2890
CT3MC305ANA3C	56.4 - 90.0	4050
CT4MC305ANA3C	84.6 - 135.0	4050
CT5MC305ANA3C	131.6 - 210.0	7050
CT6MC305ANA3C	188.0 - 300.0	8350
CT7MC305ANA3C	263.2 - 420.0	8650
CT8MC305ANA3C	376.0 - 600.0	9650

## 2 Pole Overload Relays ( Direct Mounting )

Cat Code	HSN CODE : 8536 (GST 18%)	
	Overload Relay Range (A)	MRP [₹]
MC307ANA2F	1.58 - 2.50	580
MC307ANA2G	2.40 - 3.80	580
MC307ANA2H	3.80 - 6.00	580
MC307ANA2J	6.00 - 9.30	580
MC307ANA2K	8.90 - 13.50	580
MC307ANA2L	13.20 - 20.0	670
MC307ANA2M	17.4 - 24.0	670
MC307ANA2P	23.0 - 32.0	850

## WP Overload Relays for WP & Oil Starter

Cat Code	HSN CODE : 8536 (GST 18%)	
	Overload Relay Range (A)	MRP [₹]
MC307ANA3J / MC307ANA3J-OS	6.00 - 9.30	1090
MC307ANA3K / MC307ANA3K-OS	8.90 - 13.50	1090
MC307ANA3L / MC307ANA3L-OS	13.20 - 20.0	1210
MC307ANA3M / MC307ANA3M-OS	17.4 - 24.0	1210
MC307ANA3N	22.0 - 30.0	1610
MC307ANA3P ( Spare for Oil Starter )	23.0 - 32.0	1660

# Spares for Starter ..... BCH

## Spares for Shakti Starters

HSN CODE : 8538 (GST 18%)		
Cat. No.	Description	MRP[₹]
SHA	Contact Kit	870
SHZ	Coil 190- 400 V	310
SHCC	Contact carrier	155
SHPB	Extended Button Assembly	215
SHCO	Contact for DOL	1870
SHACO	Contact for Star Delta	1870
CPNYAU*-5S	Autounit (for ASX & OISDY)	1060
CPNYAU*-5M	Autounit (for ASX & OISDY)	1060
CPTB630	Terminal Block 30A 6 way (Auto DOL)	185
CPAMS-3P/ASX	Auto Manual Switch 3 position (Auto DOL)	370

## Spares for 3-Phase Submersible Pump Starter

HSN CODE : 8538 (GST 18%)		
Cat. No.	Description	MRP[₹]
CPAU* - 5S or 5M	Autounit (2 Position)	985
CPYAU* - 5S or 5M	Autounit (3 Position SPS)	985
CPAM25	Ammeter 25A	420
CPAM50	Ammeter 50A	420
CPAM100	Ammeter 100A	435
CPVM500	Voltmeter 500V	420
SPSATG	Electronic Timer (Star Delta)	870
CPTB215	Terminal Block 15A 2 way	50
CPTB360	Terminal Block 60A 3 way	145
CPTB660	Terminal Block 60A 6 way	265
CPTB3100	Terminal Block 100A 3 way	550
CPMB	Mounting Bracket Set	100
CPAMS-2P	Auto Manual Switch 2 position	280
CPAMS-3P	Auto Manual Switch 3 position	300
CPVSS	Voltmeter Selector Switch	305
HEA11GM-PB	Start PB ( Green )	135
HEA11RM-PB	Stop PB ( Red )	135
HCB10	Aux Block ( 1 NO)	75
HCB01	Aux Block ( 1 NC)	75
HFB2PAH	LED-Amber (R-Y-B)	255
HFB2XAM	LED-Amber (Motor Trip)	170
HFB2XRM	LED-RED (415 VAC)	170

## Spares for Freedom DOL

HSN CODE : 8538 (GST 18%)		
Cat. No.	Description	MRP[₹]
C320SCB	Start Contact Block	140
CEPBI	Push Button - Green	70
CEPBO	Push Button - Red	70

## Spares for Citation M Starters

HSN CODE : 8538 (GST 18%)		
Cat. No.	Description	MRP[₹]
SP100PB3	Start & Stop reset button unit assembly for DOL & SD (upto 150HP)	255
SP100CB	Start actuator Block for DOL	215
SP100CBS	Start actuator Block for SD	215
SP100TB	Terminal Block for Star/ Delta Starters	200
CPTB975	Terminal Block for Star/ Delta Starters (40-50 HP)	645
SPSATG	Electronic Timer (Star Delta)	870
For 250-375 HP SD Starter		
TSFB-R	Push Button (RED)	185
TSFB-G	Push Button (Green)	185
050N1	Aux Contact Block(1NO+1NC)	235

## Spares for 1-Phase Submersible Pump Starter

HSN CODE : 8538 (GST 18%)		
Cat. No.	Description	MRP[₹]
ILR-B	"ON" Indication Lamp	65
SPAM-10	Ammeter 10A	420
SPAM-15	Ammeter 15A	420
SPAM-25	Ammeter 25A	420
SPAM-50	Ammeter 50A	420
SPVM-300	Voltmeter 300V	420
CPTB530	Terminal Block 30A 5 way (Mini Version)	100
CPTB530H	Terminal Block 30A 5 way (Contr. Version)	175
CPTB330	Terminal Block 30A 3 way	70
CPTB240	Terminal Block 40A 2 way	105
SPGC	"ON" Push Button GREEN upto 24A relay range	210
SPGB	"ON" Push Button GREEN For 32A relay range	210
SPRC	"OFF" Push Button RED	170
MC305TB4	Add-on Terminal Block for 23-32A relay (outgoing side)	105



# Spares for Starter ..... BCH



## Spare Contact Set for NHD, CPG & Citation Contactor

HSN CODE : 8538 (GST 18%)

Size	Consisting of	Cat. No.	MRP[₹]
C00N	( 4 - Pole contact kit )	SP90A1	900
N0N	8 Fixed main contacts	SP90B1	1960
N01N	4 Moving main contacts	SP90D1	2235
N1N	4 Springs & 4 Retainers	SP90C1	2395
C00N	( 1 - Pole contact kit )	SP90A01	220
N0N	2 Fixed main contacts	SP90B01	485
N01N	1 Moving main contacts	SP90D01	540
N1N	1 Springs & 4 Retainers	SP90C01	565
CPG216	4 Fixed contacts 2 main contacts 2 Springs retainers	CPG162PSP	440
CPG225	4 Fixed contacts 2 main contacts 2 Springs retainers	CPG252PSP	1120
CPG240	4 Fixed contacts 2 main contacts 2 Springs retainers	CPG402PSP	1235
C4	6 Fixed main contacts 6 Pan head screws 6 Helical lock washers	SP34K	1885
MC10D	3 Moving main contacts 3 Compression springs 3 Retainers	6-334	2610
MC10E	Same as above plus 6 Blow outs 6 M5/M4 self tapping screws	6-335	4925
L	6 Fixed Contacts 6 Pan Head Screws 6 Helical Lock Washers 3	6-385-L0	3785
M	Moving contacts 3 Springs 3 Retainers 6 Blowouts 6 Self tapping	6-385-M	4010
M-5	screws	6-385	4230
N	6 Fixed Contacts 12 CSK screws & washers 3 Moving contacts 3	6-293	8340
Q	Springs Spring Retainers, Self tapping screws & washers 6 Arc Chute assembly & screws	6-288-Q	12015

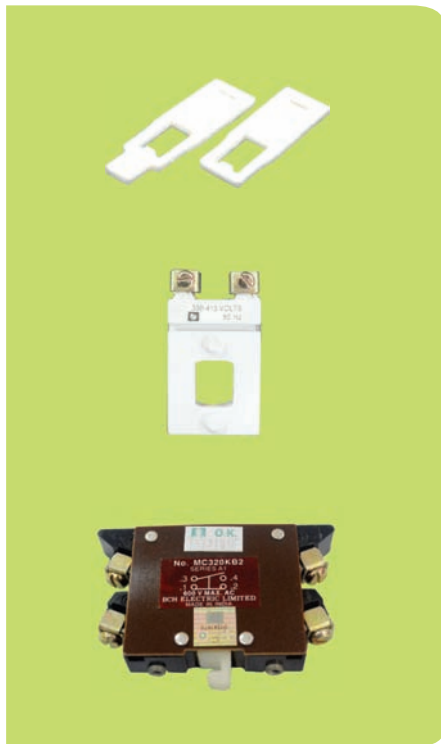
## Aux Block for Citation Contactor Size C4/D/E/L/M/M-5/N/Q/S

HSN CODE : 8538 (GST 18%)

Description	Configuration	Cat. No.	MRP[₹]
For C4 & D (Top Mounted)	1 NO + 1 NC	MC320KB2	380
For E (Top Mounted)	1 NO + 1 NC	AC35EB11	455
For size L, M, M-5 (Side Mounted)	1 NO + 1 NC	C320KGM11	510
For size N, Q, S (Side Mounted)	1 NO + 1 NC	MC320KB11	535



# Spares for Starter ..... BCH



## Spares for NHD, CPG & Citation Contactor

HSN CODE : 8538 (GST 18%)			
Contactor	Cat. No.	MRP[₹]	Lot Size
Carrier for NHD	SP90CC	170	1
Carrier for CPG	CPG2PCC	105	1
Magnet Coil for NHD/ CPG	SP90MC *	310	10
Magnet coil for Citation Contactors C4, MC10D & MC10E	9-2267 *	875	1
	9-2268 *	1400	1

## Spare Coil - Size L, M, M-5, N, Q, S

HSN CODE : 8538 (GST 18%)			
Description	For Contactor Size	Cat. No.	MRP[₹]
Magnet Coil	M-5, L, M	9-2268 *	1400
Magnet Coil	N, Q, S	9-2412 *	3090

\* To complete Cat. No. suffix voltage code from below Coil voltage master table

### COIL VOLTAGE : MASTER TABLE

	PRODUCT	110V	160-220V	220-240V	230-360V	260-400V	310-400V	190-400V	230-420V	275-420V	380-415V	415V	440V	550V
	WORKING VOLTAGE BAND	94-121V	136-242V	187-264V	195.5-396V	221-440V	264-440V	161.5-440V	195.5-462V	234-462V	323-456V	353-456V	374-484V	468-605V
NHD 2P	CPG216	A	BW	H	-	-	-	-	-	-	N	-	-	-
	CPG225	A	BW	H	-	-	-	-	-	-	N	-	-	-
	CPG240	A	BW	H	-	-	-	-	-	-	N	-	-	-
SHAKTI	SHAKTI DOL	-	-	-	-	G	-	Z	ZB	-	N	-	-	-
	SHAKTI STAR DELTA	-	-	-	-	G	-	Z	-	MB	N	-	-	-
NHD 4P	C00N	A	-	H	-	G	-	-	-	-	N	-	C	D
	NON	A	-	H	-	G	-	-	-	-	N	-	C	D
	N01N	A	-	H	LV	-	WB	-	-	-	N	-	-	-
	N1N	A	-	H	-	-	WB	-	-	-	N	-	C	D
JPG	JPG216/220/225	-	-	H	-	-	-	-	-	-	N	-	-	-
CITATION	C4 & MC10D	A	-	-	-	-	-	-	-	-	-	M	C	D
	MC10EN	A	-	-	-	-	-	-	-	-	-	M	C	D
FREEDOM SERIES	MCE15L TO M5	A	-	-	-	-	-	-	-	-	-	M	C	D
	MCE15N, Q & S	A	-	-	-	-	-	-	-	-	-	M	C	D

# Motor Starters..... BCH



## Auto Switch with Single Phase Preventer

HSN CODE : 8536 (GST 18%)

Cat Code	Product Description	MRP[₹]
ACPAUN-5S	Auto Unit with 5-10 SECONDS DELAY 380-415V	810
ACPAUZ-5S	Auto Unit with 5-10 SECONDS SELAY 230-400V	810
ACPAUZ-5M	Auto Unit with 5 MINUTES DELAY 230-400V	810
ACPAUN-5M	Auto Unit with 5 MINUTES DELAY 380-415V	810

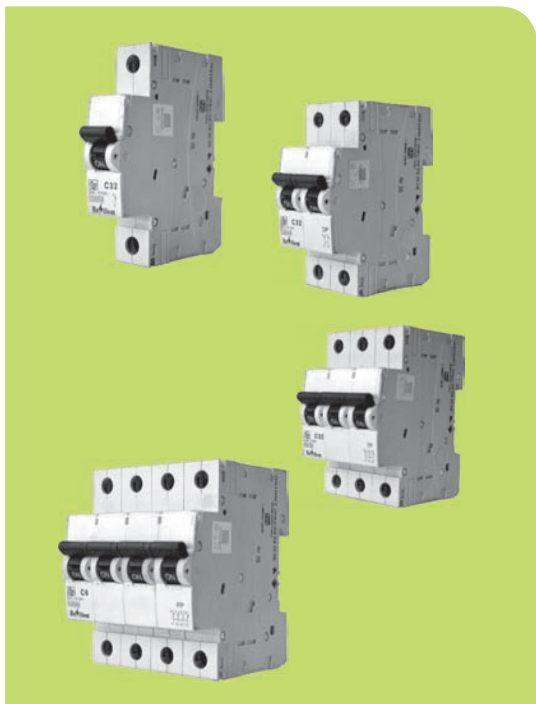


## Dual Meter (Combination of Ammeter & Voltmeter)

HSN CODE : 9030 (GST 18%)

Cat. No.	Product Description	MRP[₹]
CPAM10VM300	COMBINED AM 0-10-60A & VM 0-300V,S-72	610
CPAM15VM300	COMBINED AM 0-15-90A & VM 0-300V,S-72	610
CPAM25VM300	COMBINED AM 0-25-150A & VM 0-300V,S-72	610
CPAM30VM300	COMBINED AM 0-30-180A & VM 0-300V,S-72	610
CPAM50VM300	COMBINED AM 0-50-300A & VM 0-300V,S-72	610
CPAM10VM500	COMBINED AM 0-10-60A & VM 0-500V,S-72 EN	650
CPAM15VM500	COMBINED AM 0-15-90A & VM 0-500V,S-72 EN	610
CPAM30VM500	COMBINED AM 0-30-180A & VM 0-500V,S-72 EN	635
CPAM60VM500	COMBINED AM 0-60-360A & VM 0-500V,S-72 EN	635
CPAM30-60VM500S72	COMBINED AM 0-30-60A & VM 0-500V,S-72	610
CPAM60-120VM500S72	COMBINED AM 0-60-120A & VM 0-500V,S-72	650
CPAM30-60VM500S96	COMBINED AM 0-30-60A & VM 0-500V,S-96	805
CPAM60-120VM500S96	COMBINED AM 0-60-120A & VM 0-500V,S-96	845

# MCB / MCCB ..... BCH



### MCB - B CURVE

	SP	SPN	DP	TP	TPN	FP
6 - 32A	196	575	630	990	1240	1405
40A	435	780	965	1460	1665	1965
63A	450	800	985	1495	1705	2010

### MCB - C CURVE

	SP	SPN	DP	TP	TPN	FP
6 - 32A	204	635	655	1025	1275	1435
40A	460	825	990	1485	1725	2010
63A	475	850	1015	1530	1775	2065

Order in multiple of SP-12 Nos., SPN-6 Nos., DP-6 Nos., TP-4 Nos., TPN-3 Nos., FP-3 Nos.



I <sub>cu</sub>	Variant	Rated Current	Overload Setting	Ordering Code	MRP[₹]
15kA	RS	100	Fixed	XFN100P#	3475
		80		XFN080P#	3475
		63		XFN063P	3475
		50		XFN050P	3475
		40		XFN040P	3475
		32		XFN032P	3475
		25		XFN025P	3475
		20		XFN020P	3475
		16		XFN016P	3475
10kA	RS	100	Fixed	XFE100G#	1795
		80		XFE080G#	1795
		63		XFE063G	1650
		50		XFE050G	1650
		40		XFE040G	1650
		32		XFE032G	1650
		25		XFE025G	1650
		20		XFE020G	1650
		16		XFE016G	1650

MCCB of any other rating can be offered on request, for more details please refer to Industrial product price list or contact sales team

Type	Product	Rating	Cat Code	MRP[₹]
Enclosure	Bare Enclosure without MCCB	F1	F1EU3P	720
		F2	F2EU3P	1420

Above MCCB with the enclosure serves as an ideal solution for main switch.

# Wires & Cables.....

BCH Three Core Flat Cables with annealed bare & bunched copper conductor insulated & sheathed with PVC for submersible pump motors for voltage grade 1100 V as per I.S. 694 / 2010 upto 6.0 sqmm, conforming to & marked with I.S. 694 / 2010 upto 6.0 sqmm & generally conforming to I.S. 694 / 2010 above 3 Core 6.0 sqmm.

### 3 Core Flat Cable PVC Insulated Type CS- 500 Mtrs

HSN Code : 8544 (GST 18%)

BCH Code	Flat Cable	LP Per 500 Mtrs in [₹]
CS0010BM	1.0 Sqmm x 3 core Flat cable for Submersible Pumps	On request
CS0015BM	1.5 Sqmm x 3 core Flat cable for Submersible Pumps	On request
CS0025BM	2.5 Sqmm x 3 core Flat cable for Submersible Pumps	On request
CS0040BM	4.0 Sqmm x 3 core Flat cable for Submersible Pumps	On request
CS0060BM	6.0 Sqmm x 3 core Flat cable for Submersible Pumps	On request
CS0080BM	8.0 Sqmm x 3 core Flat cable for Submersible Pumps	On request
CS0100BM	10 Sqmm x 3 core Flat cable for Submersible Pumps	On request
CS0160BM	16 Sqmm x 3 core Flat cable for Submersible Pumps	On request
CS0250BM	25 Sqmm x 3 core Flat cable for Submersible Pumps	On request
CS0350BM	35 Sqmm x 3 core Flat cable for Submersible Pumps	On request

BCH Three Core Flat Cables with annealed bare & bunched copper conductor insulated & sheathed with PVC for submersible pump motors for voltage grade 1100 V as per I.S. 694 / 2010 upto 4.0 sqmm, conforming to & marked with I.S. 694 / 2010 upto 4.0 sqmm & generally conforming to I.S.694 / 2010 above 3 core 4.0 sqmm. with higher insulation & sheath thicknesses with greater mechanical strength

### 3 Core Flat Cable PVC Insulated Thick Type CFT- 500 Mtrs

HSN Code : 8544 (GST 18%)

BCH Code	Flat Cable	LP Per 500 Mtrs in [₹]
CFT-03-0010BM	1.0 Sqmm x 3 core Flat cable Thick for Submersible Pumps	On request
CFT-03-0015BM	1.5 Sqmm x 3 core Flat cable Thick for Submersible Pumps	On request
CFT-03-0025BM	2.5 Sqmm x 3 core Flat cable Thick for Submersible Pumps	On request
CFT-03-0040BM	4.0 Sqmm x 3 core Flat cable Thick for Submersible Pumps	On request
CFT-03-0060BM	6.0 Sqmm x 3 core Flat cable Thick for Submersible Pumps	On request
CFT-03-0100BM	10 Sqmm x 3 core Flat cable Thick for Submersible Pumps	On request
CFT-03-0160BM	16 Sqmm x 3 core Flat cable Thick for Submersible Pumps	On request

BCH Three Core Flat Cables with annealed bare & bunched copper conductor XLPE insulated & sheathed with PVC for use in submersible pump motors for voltage grade 1100 V suitable for heavy duty and undervoltage / overvoltage supply areas.

### 3 Core Flat Cable XLPE Insulated Type CFTX- 500 Mtrs

HSN Code : 8544 (GST 18%)

BCH Code	Flat Cable	LP Per 500 Mtrs in [₹]
CFTX-03-0015BM	1.5 Sqmm x 3 core Flat cable XLPE insulated Thick for Submersible Pumps	On request
CFTX-03-0025BM	2.5 Sqmm x 3 core Flat cable XLPE insulated Thick for Submersible Pumps	On request
CFTX-03-0040BM	4.0 Sqmm x 3 core Flat cable XLPE insulated Thick for Submersible Pumps	On request
CFTX-03-0060BM	6.0 Sqmm x 3 core Flat cable XLPE insulated Thick for Submersible Pumps	On request
CFTX-03-0100BM	10 Sqmm x 3 core Flat cable XLPE insulated Thick for Submersible Pumps	On request
CFTX-03-0160BM	16 Sqmm x 3 core Flat cable XLPE insulated Thick for Submersible Pumps	On request

BCH Three Core Flat Cables with annealed bare & bunched copper conductor XLPE insulated & sheathed with PVC for use in submersible pump motors for voltage grade 1100 V suitable for heavy duty and undervoltage / overvoltage supply areas, with higher cross sectional area of conductors

HSN Code : 8544 (GST 18%)

BCH Code	Flat Cable	LP Per 500 Mtrs in [₹]
CFTHX-03-0040BM	4.0 Sqmm x 3 core Flat cable XLPE insulated Thick for Submersible Pumps	On request
CFTHX-03-0060BM	6.0 Sqmm x 3 core Flat cable XLPE insulated Thick for Submersible Pumps	On request

\* LP of flat cables are subject to change without notice.

# TERMS & CONDITIONS

## Prices ●●●●

The prices given in this list are effective as on date and are subject to change without notice.

## Jurisdiction ●●●●

The courts at Delhi only will have jurisdiction to settle all the disputes raised.

## Duties and Taxes ●●●●

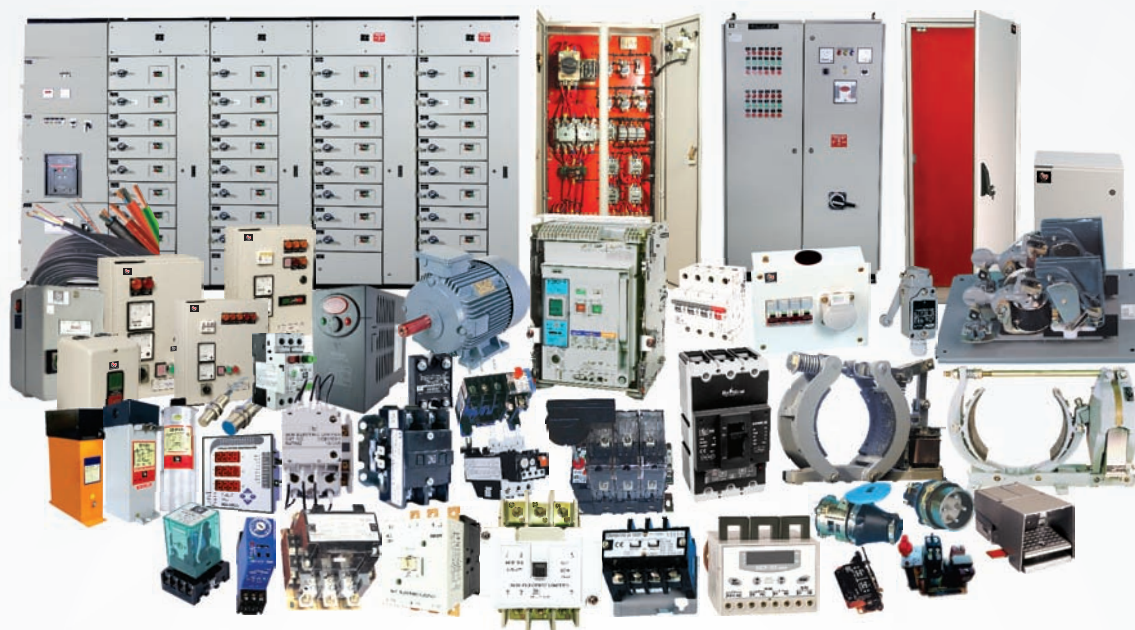
- Maximum Retail Price (MRP) is inclusive of GST as may be applicable.
- List Price is exclusive of GST.
- Prices are subject to revision without notice.

In case where any GST exemption has been claimed, the purchaser is responsible for providing the necessary GST exemption form within the specified period, failing which the purchaser would be liable for the payment of full GST plus applicable interest and penalties.

## Order Changes ●●●●

Alterations made after receipt and confirmation of order are subject to price and delivery revisions and any other expenses or levies.

a strong commitment  
to serve better  
always ...



**Switchgear | Controlgear | Enclosures | Motor Starters & Submersible Pump Starters |  
Brakes and Crane Controls | MCC | PCC | Customised Solutions | Automation |  
Wires & Cables | Motors | Reactive Power Management**



**BCH ELECTRIC LIMITED**

Switchgear & Control Gear

Motor Starters & Submersible Pump Starters

Automation

Enclosures

Electric Motors

Wires & Cables

Reactive Power Management

Brakes and Crane Control

Custom Build Products

a strong commitment to serve better always ...



## BCH ELECTRIC LIMITED

Visit us at : [www.bchindia.com](http://www.bchindia.com)

**Corporate Office :** 1105, New Delhi House, 27, Barakhamba Road, New Delhi - 110 001 Tel. : 91-11-23316029/3610/6539/43673100 Fax : 91-11-23715247

**CIN :** U31103WB1965PLC026427, Customercare No. 1800-103-9262, E-mail : [marketing@bchindia.com](mailto:marketing@bchindia.com)

**Registered Office :** Block 1E, 216, Acharya Jagadish Chandra Bose Road, Kolkata - 700 017

**Works 1 :** 20/4, Mathura Road, Faridabad - 121 006 (Haryana) Tel. : 0129-4063000/4293000 Fax : 0129-2304016

**Works 2 :** 64-68, Sector-7, IIE, Pant Nagar, Rudrapur, Udham Singh Nagar - 263 153 (Uttarakhand) Tel. : 05944-250214/16 Fax : 05944-250215

### Sales Offices :

#### Ahmedabad

103, Aaron,  
Nr. SBI Laghuudyug branch,  
Behind Sakar-1  
Gandhigram Railway station,  
Ellis bridge, Ahmedabad - 380006  
Tel. : 079-26589719  
E-mail : [ahmedabad@bchindia.com](mailto:ahmedabad@bchindia.com)

#### Bangalore

2nd Floor, 130/5,  
K.H. Road (Double road),  
Bangalore - 560 027  
Tel. : 080-22273478/41144878/  
41144879  
Fax : 080-22236759  
E-mail : [bangalore@bchindia.com](mailto:bangalore@bchindia.com)

#### Bhubaneswar

Mallick Commercial  
Complex Plot No.: A/69, unit - 3  
Bhubaneswar - 751 001  
Tel. : 0674-2380988  
E-mail : [bhubaneswar@bchindia.com](mailto:bhubaneswar@bchindia.com)

#### Chandigarh (Panchkula)

Scs-129, lind Floor,  
Mdc, Sector-5 Panchkula,  
Haryana-134 109  
Tel. : 0172-5078957 / 5049905  
Fax : 0172-5049905  
E-mail : [chandigarh@bchindia.com](mailto:chandigarh@bchindia.com)

#### Chennai

Flat No. 3A, 3rd Floor,  
Sree Apartments,  
No.508, TTK Road,  
Alwarpet, Chennai 600 018  
Tel. : 044-24337046, 24337047  
Fax : 044-24337047  
E-mail : [chennai@bchindia.com](mailto:chennai@bchindia.com)

#### Coimbatore

87, Dr. Nanjappa Road,  
Coimbatore - 641 018  
Tel. : 0422-2305311  
Fax : 0422-2302599  
E-mail : [coimbatore@bchindia.com](mailto:coimbatore@bchindia.com)

#### Dehradun

8, Co-operative Industrial Estate,  
Patel Nagar, Dehradun-248001  
E-mail : [dehradun@bchindia.com](mailto:dehradun@bchindia.com)

#### Faridabad

20/4, Mathura Road,  
Faridabad - 121 006 (Haryana)  
Tel. : 0522-4025597/4025997  
Telfax : 0129-4293009  
E-mail : [faridabad@bchindia.com](mailto:faridabad@bchindia.com)

#### Hyderabad

1-8-30348/13/102, Anya One,  
2nd Floor, P. G. Road,  
Secunderabad - 500 003  
Tel. : 040-66206263/27890306  
Fax : 040-66207273  
E-mail : [hyderabad@bchindia.com](mailto:hyderabad@bchindia.com)

#### Indore

330-331, Indraprastha Tower,  
3rd Floor, 6, M.G. Road,  
Indore - 452 001  
Tel. : 0731-2510011  
Tel. : 022-22822947/22850162  
Fax : 0731-2510012  
E-mail : [indore@bchindia.com](mailto:indore@bchindia.com)

#### Jaipur

25, Hathroi, Gopalbari,  
Jaipur - 302 001  
Tel. : 0141-2363521  
Fax : 0141-2363521  
E-mail : [jaipur@bchindia.com](mailto:jaipur@bchindia.com)

#### Jamshedpur

3rd Floor, Aastha Trade Centre,  
'Q' Road, Bistupur,  
Jamshedpur - 831 001  
Tel. : 0657-2321097/2321481  
E-mail : [jamshedpur@bchindia.com](mailto:jamshedpur@bchindia.com)

#### Kolkata

Block 1E, 216,  
Acharya Jagadish Chandra Bose Road,  
Kolkata - 700 017  
Tel. : 033-22871728  
E-mail : [kolkata@bchindia.com](mailto:kolkata@bchindia.com)

#### Lucknow

Madan Plaza, 3rd Floor,  
14, Station Road,  
Lucknow - 226 001  
Tel. : 0522-4025597/4025997  
Fax : 0522-4025697  
E-mail : [lucknow@bchindia.com](mailto:lucknow@bchindia.com)

#### Ludhiana

S.C.O. - 18, 2nd Floor,  
Feroze Gandhi Market,  
Ludhiana - 140 001  
Tel. : 0161-5021807/5022808  
Fax : 0161-5021807  
E-mail : [ludhiana@bchindia.com](mailto:ludhiana@bchindia.com)

#### Mumbai

A-151, Mittal Tower,  
Nariman Point,  
Mumbai - 400 021  
Tel. : 022-22822947/22850162  
Fax : 022-22822858  
E-mail : [mumbai@bchindia.com](mailto:mumbai@bchindia.com)

#### Nagpur

Flat No. T/12, 3rd Floor  
Baldeo Apartment,  
Behind Railway Station, Bajeria  
Nagpur (M.S.) - 440018  
E-mail : [nagpur@bchindia.com](mailto:nagpur@bchindia.com)

#### New Delhi

801, Akash Deep Building,  
26A, Barakhamba Road,  
New Delhi - 110 001  
Tel. : 011-23313878/66307065  
Fax : 011-23739230  
E-mail : [delhi@bchindia.com](mailto:delhi@bchindia.com)

#### Pune

8, Sarosh Bhavan,  
16-B/1, Dr. Ambedkar Road,  
Pune - 411 001  
Tel. : 020-26052590  
Telefax : 020-26135224  
E-mail : [pune@bchindia.com](mailto:pune@bchindia.com)

#### Raipur

2nd Floor, Building No. B-234,  
Indira Gandhi Vyvasayik Parisar,  
Pandri, Raipur - 492 004  
Tel. : 0771-4020213  
Fax : 0771-2582680  
E-mail : [raipur@bchindia.com](mailto:raipur@bchindia.com)

#### Trichy

2B, Kannagi Street,  
Ayyappa Nagar, K.K.Nagar  
Trichy - 620 021, Tamilnadu  
Tel. : +91-431-4040497  
E-mail : [trichy@bchindia.com](mailto:trichy@bchindia.com)

#### Vadodara

301, Third Floor, "Florence Classic",  
10, Ashapuri Co-Op. Hsg. Soc. Ltd., Opp. VUDA Housing,  
Near Cow Circle, Akota, Vadodara - 390 020  
Tel. : +91-265-2345068/2345069  
Telefax : 0265-2345068,  
E-mail : [vadodara@bchindia.com](mailto:vadodara@bchindia.com)

### Other Branch Locations

**Bhubaneswar :** [bhubaneswar@bchindia.com](mailto:bhubaneswar@bchindia.com), **Cochin :** [cochin@bchindia.com](mailto:cochin@bchindia.com), **Gurgaon :** [gurgaon@bchindia.com](mailto:gurgaon@bchindia.com), **Guwahati :** [guwahati@bchindia.com](mailto:guwahati@bchindia.com), **Hospet :** [hospet@bchindia.com](mailto:hospet@bchindia.com),  
**Hubli :** [hubli@bchindia.com](mailto:hubli@bchindia.com), **Madurai :** [madurai@bchindia.com](mailto:madurai@bchindia.com), **Vishakapatnam :** [vizag@bchindia.com](mailto:vizag@bchindia.com), **Surat :** [surat@bchindia.com](mailto:surat@bchindia.com)

### Resident Engineer Locations

Baddi	Gurgaon	Madurai	Rajahmundry
Bardhaman	Haridwar	Muzaffarnagar	Salem
Bhilai	Hubli	Nagpur	Surat
Bhubaneswar	Hospet	Nashik	Udaipur
Cochin	Jodhpur	Patna	Vapi
Dehradun	Kakinada	Puducherry	Vishakhapatnam
Durgapur	Kota	Rajkot	Warangal

Since product improvement is a continuous process, the data furnished in this brochure may undergo revision without prior notice.