



Motor Starters
Submersible Pump Starters

PRICE LIST

Effective : 11th June 2025



BCH

**BCH
ELECTRIC
LIMITED**

Modern facilities at Faridabad & Rudrapur



Our Strengths

- ◆ State-of-the-art product development and R&D
- ◆ Modern manufacturing facilities
- ◆ Tool room with latest facilities
- ◆ Serving customers for five decades
- ◆ Presence in ~50 locations
- ◆ 650 channel partners
- ◆ ISO 9001:2015 & ISO 14001:2015, ISO 45001: 2018 certified company

Core Values

- ◆ Integrity
- ◆ Nurturing People
- ◆ Commitment to Customers
- ◆ Striving for Excellence
- ◆ Long Term Thinking

Quality Policy

We as a member of BCH Electric Limited manufacturer of Low Voltage Switchgear & Controlgear products, are fully committed to provide Quality products and service in compliance with applicable Statutory and Regulatory requirements, to meet or exceed the customer need and expectations through -

- ◆ Continual improvement
- ◆ Involvement of employees
- ◆ Setting Quality objectives
- ◆ Training and development of employees

Health & Safety Policy

We as a member of BCH Electric Limited manufacturer of Low Voltage Switchgear & Controlgear products, are fully committed to conduct Business in compliance to applicable Health & Safety legislation and regulation.

We shall continually improve through -

- ◆ Provide Safe & Healthy working conditions for the prevention of work related injury and ill health.
- ◆ Develop & maintain the Health & Safety objectives & targets and conduct health & safety programs for achieving the objectives and target.
- ◆ The prevention of accidents through the identification, assessment and elimination of workplace hazards and the promotion of health & safety awareness among its employees and contractors.
- ◆ Encourage employee's participation and consultation in matters affecting the health, safety and well being of our people and seek suggestions from our employees of ways in which health, safety & well being can be furthered.

The Health & safety policy is publicly available on request.

Environmental Policy

We as a member of BCH Electric Limited manufacturer of Low Voltage Switchgear & Controlgear products, are fully committed to conduct Business in compliance to applicable Environmental legislation and regulation.

We shall continually improve through -

- ◆ Provide a framework for setting and reviewing environmental objectives and targets.
- ◆ Regularly review the impact of our activities on environment and strive to reduce the pollution/waste.
- ◆ Involve employees in our environmental program and provide necessary training to enable them to discharge their responsibilities towards environment management.
- ◆ Sustain the program of continual improvement in environment in environmental performance incorporating suitable metrics and monitoring.

The Environment policy is publicly available on request.



www.bchindia.com



BCH

Motor Starters & Submersible Pump Starters

Motor Starters

01-08

Page No.

- Shakti - DOL (Shakti WP & Shakti) & Auto DOL Starters 02
- Shakti - Semi & Fully Automatic Star Delta Starters 03
- Citation DOL, Citation P - DOL & Auto DOL **New** 04
- Citation - SASD, FASD, Higher HP FASD Starters 05
- BK1 DOL & SASD Starters & Spares **New** 06
- FASD with EOCR, Industrial DOL & Reversing DOL 07
- Mini Manual DOL 1Ph & 3Ph, DOL-1Ph & Manual SD Starter **New** 08

Submersible Pump Starters

09-15

- 3-Ph SPS - Citation - DOL & SD and Shakti - DOL **New** 10
- 3-Ph SPS - Citation P - DOL & SD (Standard & Premium) 11
- 3-Ph SPS - Citation P - SD (Range Extension) **New** 11
- 3-Ph SPS - Shakti P - DOL, 1-Ph DOL Starter & SPP Pro 12
- 1-Ph SPS (with CPG Contactor) 13
- 1-Ph SPS - Alfa Model & Dry Run Protection Panel **New** 14
- 1-Ph SPS - CPD Model & Mini Manual 15

Oil Immersed Starters & Spares

New

16

- Oil Immersed DOL & Star Delta Starters (SASD & FASD) 16

Others

17-21

- Contactors - (2P CPG, 4P NHD & 1 Aux + 3P) & Citation Series 17
- Overload Relays - Citation 3P, WP 3P & 2P 18
- Spares for Motor Starters & Panels 19
- Spare Contact Kits, Coils & Carrier for Motor Starters 20
- Spares for P series SPS, Dry Run SPS, Dual Meter & FR OLR 20
- Coil Band Master Table 21

MCB / MCCB

22

Wires & Cables

23





Shakti DOL & Star Delta Starters

- DOL & Star Delta upto 24 A relay range
- Heavy duty Shakti Contactor
- Wide Band coil voltages (190-400V, 230-420V, 220-240V, 380-415V)
- Encapsulated & Hermetically sealed coil
- Automatic star delta with electronic timer for reliable changeover from star to delta
- Selection of manual & auto resetting of overload relay



Citation DOL & Star Delta Starters

- DOL upto 40 HP
- Semi Automatic upto 40 HP
- Fully Automatic upto 375 HP
- Heavy Duty NHD & Citation Contactor
- Wide Band Coil Voltage (230-360V, 260-400V, 380-415V)
- Automatic Star Delta with Pneumatic Time for Reliable Changeover from Star to Delta
- Selection of Manual & Auto Resetting of Overload Relay



Shakti & Citation P Auto DOL Starters

- Shakti range available upto 24 A overload relay
- Citation P range available upto 40 A overload relay
- Auto start with on delay options:- 5 sec or 5 min or 0.5 sec to 5 min
- Mode of operation:- Auto/ Manual/ Manual SPP with selector on enclosure switch or SPP with inbuilt selector switch
- Protection against phase reversal, phase imbalance & single phasing



BK1 DOL & Semi Automatic Star Delta Starters

- Range: DOL upto 7.5 H.P
- Range: Star Delta upto 15 H.P
- Wide Band Coil 250-400 V AC & 200-400 VAC



1-Phase DOL Starter

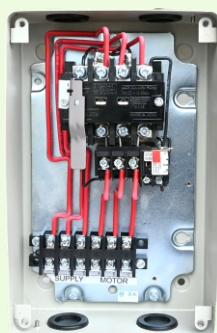
- Starter With 2 Pole CPGN Contactor and 2 Pole Overload Relay
- Encapsulated & Hermetically Sealed Coil
- Selection of Manual & Auto Resetting of Overload Relay
- Power Coated Deep Drawn Sheet Steel Enclosure for Excellent Finish & Durability



Mini Manual Starters

- Range Available upto 10 HP (3PH) & upto 3HP (1PH)
- Flush & Base Mounting Version Available
- Trips Automatically in Low Voltage Conditions (with UV Coil)
- Prevents Motor From Restarting When Power Comes Back

Motor Starters - Shakti



Cat. No.	Overload Relay Range (A)	Contactor Type	Contactor Rating (AC-3)	MRP [₹]	Cat. No. (Open Execution)	MRP [₹]
SAWPGZA	2.4 - 3.8	Shakti	12 A	3285	-	-
SAWPHZA	3.8 - 6.0					
SAWPJZA	6.0 - 9.3					
SAWPGZ	2.4 - 3.8		20 A	3325	SAWPGZI	3275
SAWPHZ	3.8 - 6.0				SAWPHZI	
SAWPJZ	6.0 - 9.3				SAWPJZI	
SAWPKZ	8.9 - 13.5				SAWPKZI	
SAWPLZ	13.2 - 20.0			3500	SAWPLZI	3480
SAWPMZ	17.4 - 24.0			3675	SAWPMZI	3660

Shakti WP DOL Starter (Big Enclosure + TB)

HSN CODE : 8536

Cat. No.	Overload Relay Range (A)	Contactor Type	Contactor Rating (AC-3)	MRP [₹]
SAWPKZ-BT	8.9 - 13.5	Shakti	20 A	4410
SAWPLZ-BT	13.2 - 20.0			4605
SAWPMZ-BT	17.4 - 24.0			4850



Shakti DOL Starter (190-400V AC Coil)

HSN CODE : 8536

Cat. No.	Overload Relay Range (A)	Contactor Type	Contactor Rating (AC-3)	MRP [₹]	Cat. No. (Open Execution)	MRP [₹]
SAGZ	2.4 - 3.8	Shakti	20 A	3550	SAGZI	3490
SAHZ	3.8 - 6.0				SAHZI	
SAJZ	6.0 - 9.3				SAJZI	
SAKZ	8.9 - 13.5				SAKZI	
SALZ	13.2 - 20.0			3865	SALZI	3815
SAMZ	17.4 - 24.0			4020	SAMZI	3965



Shakti Auto-Start DOL Starter (With 5-Sec Delay Auto Switch)

3 Position Selection (Manual - Manual SPP - Auto)

HSN CODE : 8536

Cat. No.	Overload Relay Range(A)	Contactor Type	Contactor Rating (AC-3)	MRP [₹]
ASXGZ	2.4 - 3.8	Shakti	20 A	5980
ASXHZ	3.8 - 6.0			
ASXJZ	6.0 - 9.3			
ASXKZ	8.9 - 13.5			
ASXLZ	13.2 - 20.0			6275
ASXMZ	17.4 - 24.0			6635

For other Coil Voltages, kindly refer 'Coil Voltage Master Table' at page 21

Shakti Semi Automatic Star Delta Starter with 260-400V AC Coil

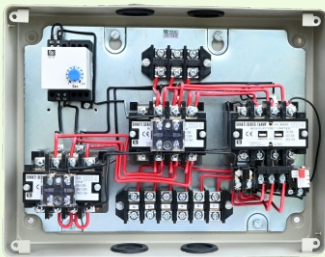
HSN CODE : 8536



Cat. No.	Overload Relay Range (A)	Contactors Type	Contactors Rating (AC-3)	MRP [₹]
SASSGLEG	2.4 - 3.8	Shakti	16 A	12155
SASSHLEG	3.8 - 6.0			
SASSJLEG	6.0 - 9.3			
SASSKLEG	8.9 - 13.5			
SASSKLEG/LOR	13.2 - 20.0			12400
SASSKLEG-M	17.4 - 24.0			12810

Shakti Fully Automatic Star Delta Starter with 260-400V AC Coil & Electronic Timer

HSN CODE : 8536



Cat. No.	Overload Relay Range (A)	Contactors Type	Contactors Rating (AC-3)	MRP [₹]
SASAGLEG	2.4 - 3.8	Shakti	16 A	13380
SASAHLEG	3.8 - 6.0			
SASAJLEG	6.0 - 9.3			
SASAKLEG	8.9 - 13.5			
SASAKLEG/LOR	13.2 - 20.0			13605
SASAKLEG/MOR	17.4 - 24.0			13995

For 380 - 415 V Coil Voltage replace Suffix 'G' by 'N'

For other Coil Voltages, kindly refer 'Coil Voltage Master Table' at page 39

Motor Starters - Citation



Citation DOL Motor Starter

HSN CODE : 8536



Cat. No.	HP / KW at 3Ø, 415V, 50Hz	Overload Relay Range (A)	Contactor Type	Contactor Rating (AC-3)	MRP [₹]	Cat. No. (Open Execution)	MRP [₹]
NADLEN	0.5 / 0.37	0.72 - 1.14	C00N	16 A	4770	NADLENI	4660
NAELEN	0.75 / 0.55	1.07 - 1.70	C00N	16 A	4770	NAELENI	4660
NAFLEN	1 / 0.75	1.58 - 2.50	C00N	16 A	4770	NAFLENI	4660
NAGLEN	2 / 1.5	2.4 - 3.8	C00N	16 A	4770	NAGLENI	4660
NAHLEN	3 / 2.2	3.8 - 6.0	C00N	16 A	4770	NAHLENI	4660
NAJLEN	5 / 3.7	6.0 - 9.3	C00N	16 A	4770	NAJLENI	4660
NAKLEN	7.5 / 5.5	8.9 - 13.5	C00N	16 A	4770	NAKLENI	4660
NALLEN	10 / 7.5	13.2 - 20.0	C00N	16 A	5055	NALLENI	4940
NALLEN/MOR	12.5 / 10	17.4 - 24.0	CP20	20 A	5890	NALLENI/MOR	5920

Citation DOL Motor Starter

(A) with NHD Contactor

HSN CODE : 8536



Cat. No.	HP / KW at 3Ø, 415V, 50Hz	Overload Relay Range (A)	Contactor Type	Contactor Rating (AC-3)	MRP [₹]
NAMLEN	15 / 11	17.4 - 24.0	N0N	25A	8045
NAMLEN/NOR	15 / 11	22.0 - 30.0	N0N	25A	8765
NAPLEN/MOR	15 / 11	17.4 - 24.0	N01N	32A	10270
NAPLEN	20 / 15	23.0 - 32.0	N01N	32A	10690
NANLEN	20 / 15	22.0 - 30.0	N1N	40A	11830
NAQLEN	25 / 18.5	26.0 - 40.0	N1N	40A	12005

(B) 30 & 40 HP DOL Starter



Cat. No.	HP / KW at 3Ø, 415V, 50Hz	Overload Relay Range (A)	Contactor Type	Contactor Rating (AC-3)	MRP [₹]
CEHFRGDM*	30 / 22	36.0 - 52.0 (FR OLR)	Freedom	50A	20985
NACT2LEDM	30 / 22	37.6 - 60.0	Citation D	40A	26890
NACT2LEEM	40 / 30	37.6 - 60.0	Citation E	70A	35810

Citation P DOL Motor Starter New

HSN CODE : 8536



Type	Cat. No.	Coil	HP/ KW at 3Ø, 415V, 50Hz	Overload Relay Range (A)	Contactor Rating (AC-3)	MRP [₹]
P2	NBMLEN/LOR	N & G	10 / 7.5	13.2 - 20	25A	5995
P2	NBMLEN	N & G	15 / 11	17.4 - 24	25A	6130
P2	NBMLEN/POR	N & G	15 / 11	23 - 32	25A	6420
P3	NBPLEN	N & WB	20 / 15	23 - 32	32A	7535
P3	NBPLEN/QOR	N & WB	20 / 15	26 - 40	32A	7820
P3H	NBQLEN	N & WB	25 / 18.5	26 - 40	40A	9270

Citation P Auto DOL Motor Starter New

HSN CODE : 8536



Type	Cat. No.	Coil	HP/ KW at 3Ø, 415V, 50Hz	Overload Relay Range (A)	Contactor Rating (AC-3)	MRP [₹]
P1A	ANBKLEN	N & G	7.5 / 5.5	8.9 - 13.5	16A	6720
P1A	ANBKLEN	N & G	10 / 7.5	13.2 - 20	16A	6835
P1HA	ANBLEN/MOR	N & G	12.5 / 10	17.4 - 24	20A	7140
P1HA	ANBLEN/POR	N & G	12.5 / 10	23 - 32	20A	7345
P2A	ANBMLEN	N & G	12.5 / 10	17.4 - 24	25A	8090
P2A	ANBMLEN/POR	N & G	15 / 11	23 - 32	25A	8420
P3A	ANBPLEN	N & WB	20 / 15	26 - 40	32A	9195
P3HA	ANBQLEN	N & WB	22.5 / 16.8	26 - 40	40A	10500

For other Coil Voltages, kindly refer 'Coil Voltage Master Table' at page 21



Motor Starters - Citation



Citation Semi Automatic Star Delta Starter with NHD Contactor

HSN CODE : 8536



Cat. No.	HP / kW at 3Ø, 415V, 50Hz	Overload Relay Range (A)	Contactor Type	Contactor Rating (AC-3)	MRP [₹]
NASSHLEN	10 / 7.5	6.0 - 9.3	C00N	16A	13040
NASSJLEN	10 / 7.5	6.0 - 9.3	C00N	16A	13040
NASSKLEN	15 / 11	8.9 - 13.5	C00N	16A	13040
NASSKLEN/LOR	15 / 11	13.2 - 20.0	C00N	16A	13450
NASSLLEN	20 / 15	13.2 - 20.0	N0N	25A	20755
NASSMLEN	25 / 18.5	17.4 - 24.0	N0N	25A	20885
NASSPLEN	25 / 18.5	23.0 - 32.0	N0N	25A	23200
NASS01PLEN	35 / 26	23.0 - 32.0	N01N	32A	25255
NASS01QLEN	40 / 30	26.0 - 40.0	N01N	32A	25475
NASSNLEN	35 / 26	22.0 - 30.0	N1N	40A	36790
NASS01CT1LEN	40 / 30	24.4 - 39.0	N01N	32A	37910
NASSFRGCLEC4M	40 / 30	29-42 (FR OLR)	C4	32A	40135



Citation Fully Automatic Star Delta Starter with NHD Contactor & Pneumatic Timers

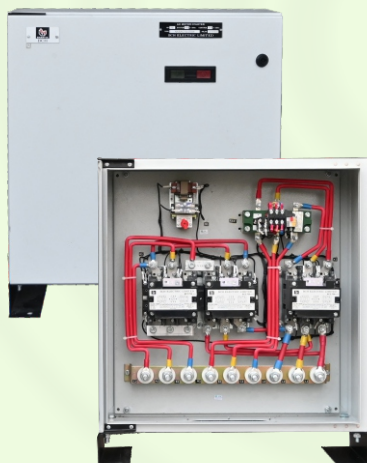
HSN CODE : 8536



Cat. No.	HP / KW at 3Ø, 415V, 50Hz	Overload Relay Range (A)	Contactor Type	Contactor Rating (AC-3)	MRP [₹]
NASAGLEN	3 / 2.2	2.4 - 3.8	C00N	16A	18030
NASAHLEN	5 / 3.7	3.8 - 6.0	C00N	16A	18030
NASAJLEN	10 / 7.5	6.0 - 9.3	C00N	16A	18030
NASAKLEN	15 / 11	8.9 - 13.5	C00N	16A	18030
NASAKLEN/LOR	15 / 11	13.2 - 20.0	C00N	16A	18905
NASALLEN	20 / 15	13.2 - 20.0	N0N	25A	23880
NASAMLEN	25 / 18.5	17.4 - 24.0	N0N	25A	24010
NASAPLEN	30 / 22	23.0 - 32.0	N0N	25A	25005
NASA01PLEN	35 / 26	23.0 - 32.0	N01N	32A	30295
NASANLEN	35 / 26	22.0 - 30.0	N1N	40A	42680
NASAQLEN	40 / 30	26.0 - 40.0	N1N	40A	42930
NASACT1LEN	40 / 30	24.4 - 39.0	N1N	40A	47990

Citation Fully Automatic Star Delta Starter with Citation M Contactor & Pneumatic Timers

HSN CODE : 8536



Cat. No.	HP / KW at 3Ø, 415V, 50Hz	Overload Relay Range (A)	Contactor Type	Contactor Rating (AC-3)	MRP [₹]
NASACT1LEDMD	40 / 30	24.4 - 39.0	D	40A	56465
NASACT2LEDMD	50 / 37	37.6 - 60.0	D	40A	57365
NASACT2LEEM	75 / 55	37.6 - 60.0	E	70A	98110
NASACT3LEEM	85 / 65	56.4 - 90.0	E	70A	104340
NASACT3LEC5M	100 / 75	56.4 - 90.0	M-5	110A	133240
NASACT4LEC5M	135 / 100	84.6 - 135.0	M-5	110A	136225
NASACT4LENM	150 / 110	84.6 - 135.0	N	140A	187805
NASACT5LEC6M	250 / 185	131.6 - 210.0	S	300A	258900
NASACT6LEC6M	375 / 280	188.0 - 300.0	S	300A	312680

For other Coil Voltages, kindly refer 'Coil Voltage Master Table' at page 21

www.bchindia.com

Effective from 11.06.2025



Motor Starters-BK1

New



BK1 DOL Motor Starter

HSN CODE : 8536

Type	Cat. No.	HP/ KW at 3Ø, 415V, 50Hz	Overload Relay Range (A)	Contactor Rating (AC-3)	MRP [₹]
BK1 DOL	BK1DBEWB1	0.75 HP	1-1.6	16A	2760
BK1 DOL	BK1DBFWB1	1 HP	1.5-2.5	16A	2760
BK1 DOL	BK1DBGWB1	2 HP	2.5-4	16A	2760
BK1 DOL	BK1DBHWB1	4 HP	4-6.5	16A	2760
BK1 DOL	BK1DBJWB1	6 HP	6-10	16A	2760
BK1 DOL	BK1DBKWB1	7.5 HP	9-14	16A	2760
BK1 DOL	BK1DBKLWB1	7.5 HP	11-18	16A	2820
BK1 DOL	BK1DBLWB1	7.5 HP	13-22	16A	2890
BK2 DOL	BK2DBLWB1	7.5 HP	13-22	25A	3310
BK2 DOL	BK2DBPWB1	7.5 HP	20-32	25A	3310

*WB1 - 250-450V (415V) *WB2 - 200-400V (360V)

BK1 Semi-Automatic Motor Starter

HSN CODE : 8536

Type	Cat. No.	HP/ KW at 3Ø, 415V, 50Hz	Overload Relay Range (A)	Contactor Rating (AC-3)	MRP [₹]
BK1 SASD	BK1SSBHWB1	6 HP	4-6.5	16A	10160
BK1 SASD	BK1SSBJWB1	10 HP	6-10	16A	10160
BK1 SASD	BK1SSBKWB1	12.5 HP	9-14	16A	10160
BK1 SASD	BK1SSBKLBW1	15 HP	11-18	16A	10240
BK1 SASD	BK1SSBLWB1	15 HP	13-22	16A	10365
BK2 SASD	BK2SSBLWB1	15 HP	13-22	25A	11380
BK2 SASD	BK2SSBPWB1	15 HP	20-32	25A	11380

BK Contactors

HSN CODE : 8536

Cat. No.	Description	MRP [₹]
BK1C16WB1	Bk1 Contactor, 4P, 16A, 250-450V AC	2025
BK2C25WB1	BK2 Contactor, 4P, 25A, 250-450V AC	2235

BK Overload Relay

HSN CODE : 8536

Cat. No.	Description	MRP [₹]
BK1OLRBE	Overload Relay, 3P, BK, 1-1.6A	1120
BK1OLRBF	Overload Relay, 3P, BK, 1.5-2.5A	1120
BK1OLRBG	Overload Relay, 3P, BK, 2.5-4.0A	1120
BK1OLRBH	Overload Relay, 3P, BK, 4-6A	1120
BK1OLRBJ	Overload Relay, 3P, BK, 6-10A	1120
BK1OLRBK	Overload Relay, 3P, BK, 9-14A	1120
BK1OLRBKL	Overload Relay, 3P, BK, 11-18A	1150
BK1OLRBL	Overload Relay, 3P, BK, 13-22A	1275
BK2OLRBP	Overload Relay, 3P, BK, 20-32A	1405

Spares for BK1 Starters

HSN CODE : 8538

Cat. No.	Description	MRP [₹]
BK1-AS16	Housing (Arc Shield) for BK1 Contactor	155
BK2-AS25	Housing (Arc Shield) for BK2 Contactor	160
BK1-CB16	Contact Bridge for BK1 Contactor	140
BK2-CB25	Contact Bridge for BK2 Contactor	145
BK1-CK16	Contact Kit for BK1 Contactor	920
BK2-CK25	Contact Kit for BK2 Contactor	1300
BKCWB1	Coil 250-450V AC for BK Contactors	300
BKCWB2	Coil 200-400V AC for BK Contactors	300
BK-PB	Twin Push Button for BK Starters	140
BKCB11	Auxiliary contact 1NO+1NC for BK Starter	315
BK1-MC16	Single moving contact for BK1 Contactor	85
BK2-MC25	Single moving contact for BK2 Contactor	120



Fully Automatic Star Delta Starter with Citation M Contactor, Pneumatic Timer & Electronic Over Current Relay with Ammeter & Voltmeter

HSN CODE : 8536



Cat. No.	HP / KW at 3Ø, 415V, 50Hz	EOCR Range (A)	Contactor Type (Citation)	Contactor Rating (AC-3)	MRP [₹]
NASASS60LED-M-P	50 / 37	5-60 Amp	D	40A	69430
NASASS60LEEM-P	75 / 55	5-60 Amp	E	70A	108605
NASA2CTD1CLEM5M-P	100/ 75	0.5-6 Amp (with CT 100/5) (2CT model)	M-5	110A	148170
NASA2CT150LEM5M-P	135/ 100	0.5-6 Amp (with CT 150/5) (2CT model)	M-5	110A	153495

Fully Automatic Star Delta Starter with NHD Contactor, Electronic Timer & Electronic Over Current Relay with Ammeter & Voltmeter and MCB

HSN CODE : 8536

Cat. No.	HP / KW at 3Ø, 415V, 50Hz	EOCR Range (A)	Contactor Type (NHD)	Contactor Rating (AC-3)	MCB Rating	MRP [₹]
NASASS30LEN-P-MCB	25 / 18.5	3-30 Amp	NA25M	25A	40A (TP)	41580

Motor Starters- Freedom

Industrial DOL Starters with Freedom Contactor & Overload Relay

HSN CODE : 8536



Cat. No.	HP / KW at 3Ø, 415V, 50Hz	Overload Relay Type	Overload Relay Range (A)	Contactor Type	Contactor Rating (AC-3)	MRP [₹]
CEBFM	0.5/0.37	Freedom	1.0-1.4	Freedom	9 A	3490
CEBGM	0.75/0.55	Freedom	1.3-1.8	Freedom	9 A	3490
CEBHM	1.0/0.75	Freedom	1.7-2.4	Freedom	9 A	3490
CEBJM	1.5/1.1	Freedom	2.2-3.1	Freedom	9 A	3490
CEBKM	2.0/1.5	Freedom	2.8-4.0	Freedom	9 A	3490
CEBMM	3.0/2.2	Freedom	4.5-6.5	Freedom	9 A	3490
CEBPM	5.0/3.7	Freedom	7.5-11	Freedom	9 A	3490
CECPM	5.0/3.7	Freedom	7.5-11	Freedom	12 A	3585
CECQM	7.5/5.5	Freedom	10-14	Freedom	12 A	3585
CEDQM	7.5/5.5	Freedom	10-14	Freedom	18 A	4530
CEDRM	10/7.5	Freedom	13-19	Freedom	18 A	4530
CECBHM	3.0/2.2	Citation	3.8-6	Freedom	9 A	3490
CECBJM	5.0/3.7	Citation	6-9.3	Freedom	9 A	3490
CECCKM	7.5/5.5	Citation	8.9-13.5	Freedom	12 A	3585
CECDLM	10/7.5	Citation	13.2-20	Freedom	18 A	4530

DOL Reversing Starter

HSN CODE : 8536



Cat. No.	HP / KW at 3Ø, 415V, 50Hz	Overload Relay Range (A)	Contactor Type	Contactor Rating (AC-3)	MRP [₹]
NARFLEN	1/0.75	1.58 - 2.50	C00N	16 A	11715
NARGLEN	2/1.5	2.4 - 3.8	C00N	16 A	11715
NARHLEN	3/2.2	3.8 - 6.0	C00N	16 A	11715
NARJLEN	5/3.7	6.0 - 9.3	C00N	16 A	11715
NARKLEN	7.5/5.5	8.9 - 13.5	C00N	16 A	11715
NARLLEN	10/7.5	13.2 - 20.0	N0N	25 A	16275
NARMLLEN	15/11	17.4 - 24.0	N1N	40 A	20825
NARNLEN	20/15	22.0 - 30.0	N1N	40 A	21990

For other Coil Voltages, kindly refer 'Coil Voltage Master Table' at page 17

Motor Starters-Mini, 1-Ph DOL



1- Phase Mini Manual Motor Starter upto 3HP (Surface Mounting)

HSN CODE : 8536



Cat. No.	Recommended HP 1Ø, 240V	Overload Relay Range (A)	MRP [₹]	Cat. No. (with UV Coil)	MRP [₹]
AMLE-10-SP	-	0.23 - 0.47	1785	AMLEH-10-SP	2395
AMLE-20-SP	-	0.46 - 0.80		AMLEH-20-SP	
AMLE-30-SP	1 / 8	0.85 - 1.55		AMLEH-30-SP	
AMLE-40-SP	1 / 6	1.60 - 3.20		AMLEH-40-SP	
AMLE-50-SP	0.5 / 0.75	3.50 - 6.50		AMLEH-50-SP	
AMLE-60-SP	1 to 2	6.80 - 11.7		AMLEH-60-SP	
AMLE-70-SP	2 to 3	11.0 - 20.0		AMLEH-70-SP	

For flush mounting replace 'E' by 'C' and reduce price by ₹ 50

3- Phase Mini Manual Motor Starter upto 10 HP (Surface Mounting)

HSN CODE : 8536



Cat. No.	Recommended HP 3Ø, 415V	Overload Relay Range (A)	MRP [₹]	Cat. No. (with UV Coil)	MRP [₹]
AMLE-10	-	0.23 - 0.47	2410	AMLEN-10	2775
AMLE-20	-	0.46 - 0.80		AMLEN-20	
AMLE-30	0.50 / 0.75	0.85 - 1.55		AMLEN-30	
AMLE-40	1.00 / 1.50	1.60 - 3.20		AMLEN-40	
AMLE-50	3.00	3.50 - 6.50		AMLEN-50	
AMLE-60	5.00	6.80 - 11.7		AMLEN-60	
AMLE-70	10.00	11.0 - 20.0		AMLEN-70	

For flush mounting replace 'E' by 'C' and reduce price by ₹ 55

1-Phase DOL with 2P Contactor & 2P Overload Relay New

HSN CODE : 8536



Type	Cat. No.	HP/ KW at 1Ø, 220V, 50Hz	Overload Relay Range (A)	Contactor Rating (AC-3)	MRP [₹]
1P10	NAHLEBW-SP	0.75 / 0.55	3.8 - 6.0	16A	2545
1P10	NAJLEBW-SP	1 / 0.75	6.0 - 9.3	16A	2545
1P10	NAKLEBW-SP	1.5 / 1.10	8.9 - 13.5	16A	2545
1P10H	NALLEBW-SP	2 / 1.5	13.2 - 20	25A	2595
1P10H	NAMLEBW-SP	3 / 2.2	17.4 - 24	25A	2675

Manual Star Delta Starter (with 260-400V AC Coil)

HSN CODE : 8536



Cat. No.	HP at 3Ø, 415V, 50Hz	Overload Relay Range (A)	Contactor Type	Contactor Rating (AC-3)	MRP [₹]
HASSGLEG	3 HP	2.4 - 3.8	C00N	16 A	7375
HASSHLEG	5 HP	3.8 - 6.0	C00N	16 A	7375
HASSJLEG	10 HP	6.0 - 9.3	C00N	16 A	7375
HASSKLEG	15 HP	8.9 - 13.5	N0N	25 A	8380

HSN CODE : 8538

HASSW15	Spare switch for 15 HP MSD Starter	2895
---------	------------------------------------	------

For other Coil Voltages, kindly refer 'Coil Voltage Master Table' at page 17



Submersible Pump Starters 3Ph & 1Ph



Three Phase

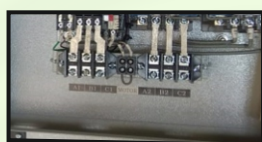
- Direct on line : upto 40 A relay rating
- Star Delta : upto 135 A relay rating
- Protections :
 - Phase failure
 - Phase imbalance
 - Phase reversal
- Short Circuit Protection Through MCB/MCCB : In case of Premium models
- Auto Start with on delay options:
 - 0.5Sec to 5Min (Field adjustable) SPP Pro
 - 5Sec
 - 5Min
- Ammeter and Voltmeter
- On/Off and Trip indications
- Powder coated enclosure with PU gasket ensuring excellent finish and reliability
- Provision for connecting Dry run preventor



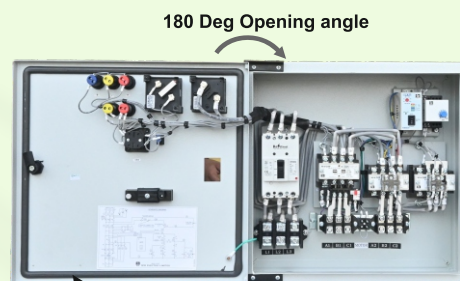
On/Trip Indicators



Isolated Terminal blocks for better termination



Better esthetic look & easy to maintenance to use of Bus-bar



180 Deg Opening angle

PU Gasket for excellent sealing against dust & water



Single Phase

With Mini DOL (up to 11 - 20 A Relay)

- Premium Model (With Ammeter & Voltmeter)

With 2 Pole Contactor + 2 Pole Relay (up to 40 A Relay)

- Economy Model (With Ammeter)
- Standard Model (With Ammeter & Voltmeter)
- Alfa Model up to 30 A Relay (With Ammeter & Voltmeter)
- With Dry Run Protection Model (Digital Meter)
- CPD Model with MCB (Digital VA Meter)



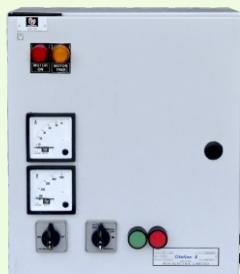
Motor Starters-Citation & Shakti



Citation Submersible Pump Starter with 3-Position Selection (with Auto Switch) with or without MCB option

DOL (3-Ph)

HSN CODE : 8536

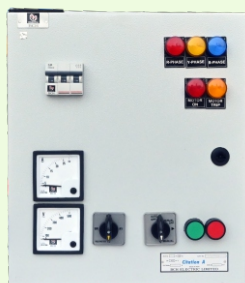


Overload Relay Range (A)	Contactor Type	Contactor Rating (AC-3)	DOL (without Short Circuit Protection)		Premium DOL (with Short Circuit Protection) MCB	
			Cat. No.	MRP [₹]	Cat. No.	MRP [₹]
1.58 - 2.50	C00N	16 A	CPEYNAFN	10495	--	--
2.4 - 3.8	C00N	16 A	CPEYNAGN	10495	CPPYNAGN	15285
3.8 - 6.0	C00N	16 A	CPEYNAHN	10495	CPPYNAHN	15285
6.0 - 9.3	C00N	16 A	CPEYNAJN	10495	CPPYNAJN	15285
8.9 - 13.5	C00N	16 A	CPEYNAKN	10495	CPPYNAKN	15285
13.2 - 20.0	C00N	16 A	CPEYNALN	11370	CPPYNALN	16350
17.4 - 24.0	N0N	25 A	CPEYNAMN	12645	CPPYNAMN	18610
23.0 - 32.0	N01N	32 A	CPEYNA01PN	14070	--	--

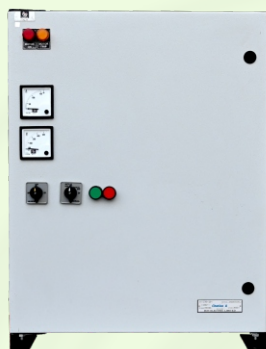
Citation Submersible Pump Starter with 3-Position Selection (with Auto Switch) with or without MCB / MCCB option

STAR DELTA (3-Ph)

HSN CODE : 8536



Overload Relay Range (A)	Contactor Type	Contactor Rating (AC-3)	Star Delta (without Short Circuit Protection)		Premium Star Delta (with Short Circuit Protection) MCB or MCCB	
			Cat. No.	MRP [₹]	Cat. No.	MRP [₹]
3.8 - 6.0	C00N	16 A	CPSDEYHN	20800	--	--
6.0 - 9.3	C00N	16 A	CPSDEYJN	20800	CPSPDYJN	25225
8.9 - 13.5	C00N	16 A	CPSDEYKN	20800	CPSPDYKN	25225
13.2 - 20.0	C00N	16 A	CPSDEYLN-C00	21170	CPSPDYLN-C00	26185
17.4 - 24.0	CP20	20 A	CPSDEYMN-CP20	23150	--	--
13.2 - 20.0	N0N	25 A	CPSDEYLN	25375	CPSPDYLN	30985
17.4 - 24.0	N0N	25 A	CPSDEYMN	26730	CPSPDYMN	33480
23.0 - 32.0	N01N	32 A	CPSDEY01PN	32905	CPSPDY01N	38210
22.0 - 30.0	N1N	40 A	CPSDEYNN	40995	CPSPDYNN	45820
26.0 - 40.0	N1N	40 A	CPSDEYQN	41595	CPSPDYQN	46455
24.4 - 39.0	N1N	40 A	CPSDEYCT1N	47140	CPSPDYCT1N	55110
37.6 - 60.0	Citation E	70 A	CPSDEYCT2M	77640	CPSPDYCT2M	88220
56.4 - 90.0	Citation E	70 A	CPSDEYECT3M	83335	CPSPDYECT3M	89640
56.4 - 90.0	Citation M-5	110 A	CPSDEYCT3M	107825	CPSPDYCT3M	114780
84.6 - 135.0	Citation M-5	110 A	CPSDEYCT4M	111230	CPSPDYCT4M	123220



Shakti DOL Submersible Pump Starter (with Auto Switch) 3-Ph

HSN CODE : 8536



Overload Relay Range (A)	Description	Contactor Rating (AC-3)	3 Position Selection (Manual - Manual SPP - Auto)	
	Contactor Type		Cat. No.	MRP [₹]
2.4 - 3.8	Shakti	20 A	CPEYSAGZ	9900
3.8 - 6.0	Shakti	20 A	CPEYSAHZ	9900
6.0 - 9.3	Shakti	20 A	CPEYSAJZ	9900
8.9 - 13.5	Shakti	20 A	CPEYSAKZ	9900
13.2 - 20.0	Shakti	20 A	CPEYSALZ	10950
17.4 - 24.0	Shakti	20 A	CPEYSAMZ	11520

For 380 - 415 V coil voltage replace suffix "Z" with "N" in the Cat. Code

For other Coil Voltages, kindly refer 'Coil Voltage Master Table' at page 21

Motor Starters-Citation P & Shakti P



Citation P Submersible Pump Starter - Standard and Premium versions

DOL (3-Ph)

HSN CODE : 8536



Type	Overload Relay Range (A)	Contactor Rating (AC-3)	Coil	Standard (without Short Circuit Protection)		Premium (with Short Circuit Protection with MCB)	
				Cat. No.	MRP [₹]	Cat. No.	MRP [₹]
CITATION P10	1.58 - 2.5	16 A	N & G	CPEYNBFN	9840	CPPYNBFN	12330
CITATION P10	2.4 - 3.8	16 A	N & G	CPEYNBGN	9840	CPPYNBGN	12330
CITATION P10	3.8 - 6	16 A	N & G	CPEYNBHN	9840	CPPYNBHN	12330
CITATION P10	6 - 9.3	16 A	N & G	CPEYNBJN	9840	CPPYNBJN	12380
CITATION P10	8.9 - 13.5	16 A	N & G	CPEYNBKN	9840	CPPYNBKN	12380
CITATION P10	13.2 - 20	16 A	N & G	CPEYNBLN	10275	CPPYNBLN	12945
CITATION P10B	13.2 - 20	20 A	N & G	CPEYNBL2N	10425	CPPYNBL2N	13340
CITATION P10H	17.4 - 24	25 A	N & G	CPEYNBMN	10800	CPPYNBMN	13885
CITATION P11	23 - 32	32A	N & WB	CPEYNBP01N	12075	CPPYNBP01N	15525
CITATION P11	26 - 40	32A	N & WB	CPEYNBQ01N	12240	CPPYNBQ01N	15675
CITATION P12	26 - 40	40A	N & WB	CPEYNBQN	12845	CPPYNBQN	15965

For spare contactor refer page 13

Citation P Submersible Pump Starter - Standard and Premium versions

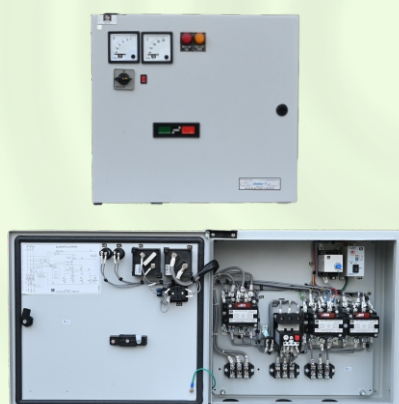
STAR DELTA (3-Ph)

HSN CODE : 8536



Type	Overload Relay Range (A)	Contactor Rating (AC-3)	Coil	Standard (without Short Circuit Protection)		Premium ^{New} (with Short Circuit Protection with MCB/MCCB)	
				Cat. No.	MRP [₹]	Cat. No.	MRP [₹]
CITATION P20	6 - 9.3	16 A	N & G	CPSDEYNBJN	19270	CPSPYNBIN	21095
CITATION P20	8.9 - 13.5	16 A	N & G	CPSDEYNBKN	19270	CPSPYNBKN	21635
CITATION P20	13 - 20	16 A	N & G	CPSDEYNBLN	19875	CPSPYNBIN	21795
CITATION P20A	13.2 - 20	20 A	N, LV & G	CPSDEYNBL2N	20660	CPSPYNBIN	23865
CITATION P20A	17.4 - 24	20 A	N, LV & G	CPSDEYNBM2N	20775	CPSPYNBIN	23995
CITATION P20B	23 - 32A	25 A	N, LV & G	CPSDEYNBPN	24075	CPSPYNBIN	28180
CITATION P20H	22 - 30A	32 A	N & WB	CPSDEYNB01NN	24485	CPSPYNB01NN	28275
CITATION P20H	23 - 32A	32 A	N & WB	CPSDEYNB01PN	24500	CPSPYNB01PN	28830
CITATION P20H	26 - 40A	32 A	N & WB	CPSDEYNB01QN	24995	CPSPYNB01QN	31320
CITATION P21	26 - 40A	40 A	N & WB	CPSDEYNBQN	31080	CPSPYNBQN	38560
CITATION P21	36 - 52A (FR OLR)	40 A	N & WB	CPSDEYNBFRGDN	36165	-	-

Range Extension



Type	Overload Relay Range (A) (Freedom OLR)	Contactor Rating (AC-3) (Citation 3P)	Cat. No.	Coil	MRP [₹] ^{New}
Citation P32	22 - 32	32 Amp	CPSDEYNBC4FRGBM	M	38155
Citation P40	36 - 52	40 Amp	CPSDEYNBDFRGDM	M	39040
Citation P50	45 - 63	50 Amp	CPSDEYNBD1FRGEM	M	47030
Citation P70	36 - 52	70 Amp	CPSDEYNBEFRGDM	M & LA	64085
Citation P70	45 - 63	70 Amp	CPSDEYNBEFRGEM	M & LA	66010
Citation P70	60 - 80	70 Amp	CPSDEYNBEFRGFM	M & LA	68255
Citation P100	60 - 80	110 Amp	CPSDEYNBM5FRGFM	M & LA	88290

For spare contactor refer page 17

Shakti P DOL Submersible Pump Starter (3-Phase)

HSN CODE : 8536



Type	Overload Relay Range (A)	Contactor Rating (AC-3)	Cat. No.	Coil	MRP [₹]
SHAKTI P6	1.58 - 2.5	12 A	CPEYSBFZ	Z & N & MB	9160
SHAKTI P6	2.4 - 3.8		CPEYSBGZ		
SHAKTI P6	3.8 - 6		CPEYSBHZ		
SHAKTI P6	6 - 9.3		CPEYSBJZ		
SHAKTI P10	8.9 - 13.5	20 A	CPEYSBKZ		9295
SHAKTI P10	13.2 - 20		CPEYSBLZ		10205
SHAKTI P10	17.4 - 24		CPEYSBMZ		10735

*For spare Contactor refer page 19

1-Phase DOL with 2P CPG Contactor & 2P Overload Relay

HSN CODE : 8536



Cat. No.	HP / KW at 1Ø, 220V, 50Hz	Overload Relay Range (A)	Contactor Type	Contactor Rating (AC-3)	MRP [₹]
NAAEBW-SP	-	1.07 - 1.70	2P CPG	12A	3450
NAAHBW-SP	0.75 / 0.55	3.8 - 6.0	2P CPG	12A	3450
NAHBW-SP	0.75 / 0.55	3.8 - 6.0	2P CPG	16A	3495
NAAJBW-SP	1 / 0.75	6.0 - 9.3	2P CPG	12A	3450
NAJBW-SP	1 / 0.75	6.0 - 9.3	2P CPG	16A	3495
NAKBW-SP	1.5 / 1.10	8.9 - 13.5	2P CPG	16A	3495
NAALBW-SP	2 / 1.5	13.2 - 20.0	2P CPG	20A	3585
NALBW-SP	2 / 1.5	13.2 - 20.0	2P CPG	25A	3910
NAMBW-SP	3 / 2.2	17.4 - 24.0	2P CPG	25A	4090

Auto Switch Cum SPP (SPP pro)



- Two type of versions : 6-wire and 7-wire
- Microcontroller based design for advanced functionality
- Protection against single phasing, reverse phasing and unbalance voltage
- Settable ON delay time - 5 Sec to 5 Min
- Integrated Auto/ Manual SPP/ Bypass switch
- LED indication :
 - Healthy Supply Conditions: Green LED is continuous ON
 - Unhealthy Supply Conditions: Green LED is blinking

HSN CODE : 8538

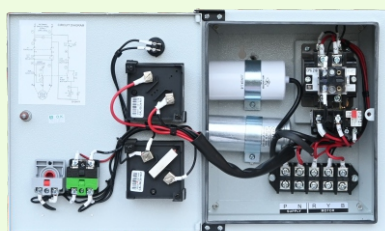
Cat. No.	Cat. No. (For BK1 Starter)	Description	MRP[₹]
BCHSPP2Z	BCHSPP2BKZ	SPP Pro (6 wire), 230-400V AC	975
BCHSPP2N	BCHSPP2BKN	SPP Pro (6 wire), 380-415V AC	975
BCHSPP2CW	BCHSPP2BKCW	SPP Pro (6 wire), 260-440V AC	975
BCHSPP2Z-7W	BCHSPP2BKZ-7W	SPP Pro (7 wire), 230-400V AC	975
BCHSPP2N-7W	BCHSPP2BKN-7W	SPP Pro (7 wire), 380-415V AC	975
BCHSPP2CW-7W	BCHSPP2BKCW-7W	SPP Pro (7 wire), 260-440V AC	975

Motor Starters-1-Ph SPS



1-Phase SPS With 2P Contactor + Overload Relay (Ammeter + Voltmeter) with 160-220V AC Coil

HSN CODE : 8536



HP at 1Ø, 220V, 50Hz	Overload Relay Range (A)	Contactor Rating (AC-3)	Cat. No.	Run Capacitor (mfd)	Start Capacitor (mfd)	MRP [₹]
0.75 HP	3.8 - 6.0	12 Amp	CPNSHBW-SPE	25	80/100	5675
0.75 HP	3.8 - 6.0	16 Amp	CPNSHBW-SP	25	80/100	5795
			CPNSHBW-SP(RC36)	36	80/100	5840
			CPNSHBW-RC25-SC120	25	100/120	5980
			CPNSHBW-RC30-SC200	30	150/200	6765
1 HP	6.0 - 9.3	12 Amp	CPNSJBW-SPE	36	100/120	5900
1 HP	6.0 - 9.3	16 Amp	CPNSJBW-SP	36	100/120	5985
			CPNSJBW-RC20SC100	20	80/100	5950
			CPNSJBW-RC25SC100	25	80/100	6030
			CPNSJBW-RC50SC100	50	80/100	6205
			CPNSJBW-RC60SC150	60	120/150	6495
			CPNSJBW-RC72SC150	72	120/150	6635
			CPNSJBW-SP(RC30)	30	100/120	6030
			CPNSJBW-SP(RC50)	50	100/120	6030
			CPNSJBW-SP(SC100)	36	80/100	6445
			CPNSJBW-RC36-SC200	36	150/200	6890
1.5 HP	8.9 - 13.5	12 Amp	CPNSKBW-SPE	50	120/150	6490
1.5 HP	8.9 - 13.5	16 Amp	CPNSKBW-SP	50	120/150	6530
			CPNSKBW-RC30SC120	30	100/120	6435
			CPNSKBW-RC36SC120	36	100/120	6455
			CPNSKBW-SP(RC36)	36	120/150	6495
			CPNSKBW-SP(RC72)	36+36	120/150	6700
			CPNSKBW-RC50-SC200	50	150/200	7145
			CPNSLBW-SP	72	150/200	6990
			CPNSLBW-SP(2RC36)	36+36	150/200	7165
			CPNSLBW-RC100SC150	100	120/150	7040
			CPNSLBW-RC90SC150	45+45	120/150	7175
2 HP	13.2 - 20.0	16 Amp	CPNSLBW-SP(SC150)	72	120/150	7175
			CPNSLBW-RC72SC250	72	200/250	7570
3 HP	17.4 - 24.0	20 Amp	CPNSMBW-SPE	100	200/250	7455
3 HP	17.4 - 24.0	25 Amp	CPNSMBW-SP	100	200/250	7770
			CPNSMBW-SP(2RC50)	50+50	200/250	8070
3 HP	22.0 - 30.0	25 Amp	CPNSNBW-SP	100	200/250	8310
			CPNSNBW-SP(2RC50)	50+50	200/250	8545
5 HP	23.0 - 32.0	32 A & 12 A	CPNSPBW-SPE	100+50	200/250	11395
5 HP	23.0 - 32.0	40 A & 16 A	CPNSPBW-SP	100+50	200/250	11415
			CPNSPBW-SP(3RC50)	50+50+50	200/250	11685
5 HP	23.0 - 32.0	40 Amp	New CPNSPBW-SPH	100+50	200/250	9715
			CPNSPBBW-SPH	100+50	200/250	9715
			CPNSPBW-SPH(3R50)	50+50+50	200/250	9715
			CPNSPBBW-SPH(3R50)	50+50+50	200/250	9715
			New CPNSQBBW-SPH	100+50	200/250	10205
5 HP	28.0 - 40.0	40 Amp	CPNSQBBW-SPH	100+50	200/250	10205
			CPNSQBBW-SPH(3R50)	50+50+50	200/250	10205
			CPNSQBBW-SPH(3R50)	50+50+50	200/250	10205
			CPNSQBBW-SPH(3R50)	50+50+50	200/250	10205

*Suffix "D" in Cat Code for Dry Run Protection panel (only Extra Terminal is provided to connect Dry Run unit)

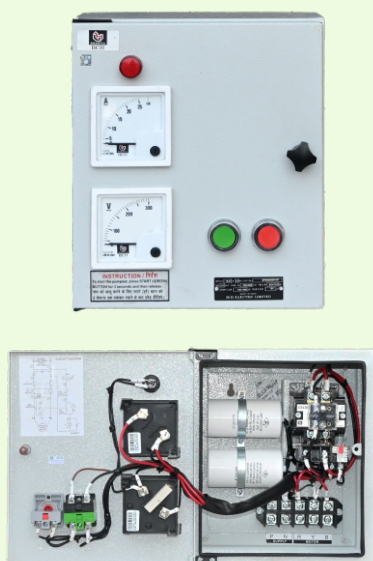
**For 170-240V coil, replace "BW" in above cat code with "BBW"

Motor Starters-1-Ph SPS



1-Phase SPS (Alfa Model) With 2P Contactor + Overload Relay (Ammeter + Voltmeter)

HSN CODE : 8536



HP at 1Ø, 220V, 50Hz	Overload Relay Range (A)	Contactor Rating (AC-3)	Cat. No.	Run Capacitor (mfd)	Start Capacitor (mfd)	MRP [₹]
0.75 HP	3.8 - 6	16 Amp	CPGNSHBW-SP	25	80-100	4880
1 HP	6 - 9.3	16 Amp	CPGNSJBW-SP	36	100-120	5255
1 HP	6 - 9.3	16 Amp	CPGNSJBBW-SP	36	100-120	5255
1 HP	6 - 9.3	16 Amp	CPGNSJBW-SP(RC50)	50	100-120	5255
1 HP	6 - 9.3	16 Amp	CPGNSJBBW-SP(RC50)	50	100-120	5255
1 HP	6 - 9.3	16 Amp	CPGNSJBW-RC50SC100	50	80-100	5255
1.5 HP	8.9 - 13.5	16 Amp	CPGNSKBW-SP	50	120-150	5655
1.5 HP	8.9 - 13.5	16 Amp	CPGNSKBBW-SP	50	120-150	5655
1.5 HP	8.9 - 13.5	16 Amp	CPGNSKBW-SP(RC72)	72	120-150	5655
1.5 HP	8.9 - 13.5	16 Amp	CPGNSKBBW-SP(RC72)	72	120-150	5655
2 HP	13.2 - 20	16 Amp	CPGNSLBW-SP	72	150-200	6015
2 HP	13.2 - 20	16 Amp	CPGNSLBBW-SP	72	150-200	6015
2 HP	13.2 - 20	16 Amp	CPGNSLBW-SP(2RC36)	36x2	150-200	6015
2 HP	13.2 - 20	16 Amp	CPGNSLBBW-SP(2R36)	36x2	150-200	6015
2 HP	13.2 - 20	16 Amp	CPGNSLBW-RC90SC150	45X2	120-150	6015
2 HP	13.2 - 20	16 Amp	CPGNSLBW-R100SC150	100	120-150	6015
3 HP	17.4 - 24	25 Amp	CPGNSMBW-SP	100	200-250	6565
3 HP	17.4 - 24	25 Amp	CPGNSMBBW-SP	100	200-250	6565
3 HP	17.4 - 24	25 Amp	CPGNSMBW-SP(2RC50)	50x2	200-250	6565
3 HP	17.4-24	25 Amp	CPGNSMBBW-SP(2R50)	50x2	200-250	6565
3 HP	22 - 30	25 Amp	CPGNSNBW-SP(2RC50)	50x2	200-250	6895

1-Phase SPS With 2P Contactor + Overload Relay + Dry Run Protection

HSN CODE : 8536



HP at 1Ø, 220V, 50Hz	Overload Relay Range (A)	Contactor Rating (AC-3)	Cat. No.	Run Capacitor (mfd)	Start Capacitor (mfd)	MRP [₹]
0.75 HP	3.8 - 6	16 Amp	CPGND1HBW-SP	25	80-100	5905
1 HP	6 - 9.3	16 Amp	CPGND1JBW-SP	36	100-120	6105
1 HP	6 - 9.3	16 Amp	CPGND1JBBW-SP	36	100-120	6105
1 HP	6 - 9.3	16 Amp	CPGND1JBW-SP(RC50)	50	100-120	6150
1 HP	6 - 9.3	16 Amp	CPGND1JBW-R50S100	50	100-120	6330
1.5 HP	8.9 - 13.5	16 Amp	CPGND1KBW-SP	50	120-150	6660
1.5 HP	8.9 - 13.5	16 Amp	CPGND1KBBW-SP	50	120-150	6660
1.5 HP	8.9 - 13.5	16 Amp	CPGND1KBW-SP(RC72)	72	120-150	6830
2 HP	13.2 - 20	16 Amp	CPGND1LBW-SP	72	150-200	7125
2 HP	13.2 - 20	16 Amp	CPGND1LBBW-SP	72	150-200	7125
2 HP	13.2 - 20	16 Amp	CPGND1LBW-SP-2R36	36x2	150-200	7305
2 HP	13.2 - 20	16 Amp	CPGND1LBBW-SP-2R36	36x2	150-200	7305
2 HP	13.2 - 20	16 Amp	CPGND1LBW-R90S150	45X2	150-200	7315
2 HP	13.2 - 20	16 Amp	CPGND1LBW-R100S150	100	150-200	7180
3 HP	17.4 - 24	25 Amp	CPGND1MBW-SP	100	200-250	7920
3 HP	17.4 - 24	25 Amp	CPGND1MBBW-SP	100	200-250	7920
3 HP	17.4 - 24	25 Amp	CPGND1MBW-SP-2R50	50x2	200-250	8225
3 HP	17.4 - 24	25 Amp	CPGND1MBBW-SP-2R50	50x2	200-250	8225
3 HP	22 - 30	25 Amp	CPGND1NBW-SP-2R50	50x2	200-250	8705

1-Phase SPS with 2P DPC Contactor + MCB

HSN CODE : 8536



HP at 1Ø, 220V, 50Hz	SP MCB "C" Curve	Contactor Rating (AC-3)	Cat. No.	Run Capacitor (mfd)	Start Capacitor (mfd)	MRP [₹]
0.5 HP	6A	20A	CPD2A05CJ06	25	80-100	3690
0.75 HP	10A	20A	CPD2A07AK10	36	40-60	3690
1 HP	10A	20A	CPD2A10BM10	50	60-80	3715
1 HP	10A	20A	CPD2A10CK10	36	80-100	3715
1 HP	10A	20A	CPD2A10DK10	36	100-120	3745
1 HP	10A	20A	CPD2A10DM10	50	100-120	3790
1.5 HP	16A	20A	CPD2A15DL16	72	100-120	3855
1.5 HP	16A	20A	CPD2A15GM16	50	120-150	3855
1.5 HP	16A	20A	CPD2A15GL16	72	120-150	3925



Spares for 1-Phase Submersible Pump Starter (CPD)

Cat. No.	Description	MRP[₹]
SPA1A30V300	Digital VA Meter A1, AM30A, VM300V, S-72	670
SPA1VM-CT	CT for Digital VA Meter A1	130
SPARC	Off Push Button Red for 1Ph CPD SPS	260
SPAGC	On Push Button Green for 1Ph CPD SPS	315
SPATB530	Terminal Block 30A 5W for 1Ph CPD SPS	155
CPDN202KL	20A, 2P DP Contactor	1055
SP402MCKL	Coil 170-240V 2P DP Contactor (Bulk Pack of 12 nos.)	2735

1-Phase SPS With 2 Pole Contactor + Overload Relay (With Ammeter)

HSN CODE : 8536



Cat. No.	HP at 1Ø, 220V, 50Hz	Overload Relay Range (A)	Contactor Rating (AC-3)	Run Capacitor (mfd)	Start Capacitor (mfd)	MRP[₹]
CPNEHBW-SP	0.5 / 0.75 HP	3.8 - 6.0	16 Amp	25	80/100	5410
CPNEJBW-SP	1 HP	6.0 - 9.3	16 Amp	36	100/120	5710
CPNEKBW-SP	1.5 HP	8.9 - 13.5	16 Amp	50	120/150	6240
CPNELBW-SP	2 HP	13.2 - 20.0	16 Amp	36+36	150/200	6650
CPNEMBW-SP	3 HP	17.4 - 24.0	25 Amp	50+50	200/250	7585
CPNEPBW-SP	5 HP	23.0 - 32.0	40 Amp	50+50+50	200/250	11200

Suffix "D" in Cat Code for Dry Run Protection panel (only Extra Terminal is provided to connect Dry Run unit)

1-Phase SPS With Mini Manual DOL Starter (With Ammeter + Voltmeter)

HSN CODE : 8536



Cat. No.	HP at 1Ø, 220V, 50Hz	Overload Relay Range (A)	Run Capacitor (mfd)	MRP[₹]
CPPM50-25-SP	0.5 / 0.75HP	3.5 - 6.5	25	4135
CPPM50H-25-SP	0.5 / 0.75HP	3.5 - 6.5	25	4705
CPPM60-25-SP	1 HP	6.8 - 11	25	4165
CPPM60-36-SP	1 HP	6.8 - 11	36	4165
CPPM60H-36-SP	1 HP	6.8 - 11	36	4735
CPPM60-50-SP	1.5 HP	6.8 - 11	50	4380
CPPM60H-50-SP	1.5 HP	6.8 - 11	50	4980
CPPM70-36-SP	2 HP	11.0 - 20.0	36	4445
CPPM70-50-SP	2 HP	11.0 - 20.0	50	4445
CPPM70H-50-SP	2 HP	11.0 - 20.0	50	5060

Motor Starters-Oil Immersed



DOL Starter - 3 Phase

HSN CODE : 8536

Cat. No.	Overload Relay Range (A)	HRC Fuse Rating (EE Type) (max)	MRP [₹]
OISWPGT	2.4 - 3.8	16A	4500
OISWPHT	3.8 - 6.0	20A	4500
OISWPJT	6.0 - 9.3	25A	4500
OISWPKT	8.9 - 13.5	36A	4500
OISWPLT	13.2 - 20.0	50A	4585
OISWPMT	17.4 - 24.0	63A	4965

Note : The last alphabet in the Cat No. indicates coil voltage : N-380-415VAC ; T-220-400VAC ; Y-240-400VAC

Star Delta Starter - Fully Automatic

HSN CODE : 8536

Cat. No.	Overload Relay Range (A)	HRC Fuse Rating (EE Type) (max)	MRP [₹]
OISDAWPJ*	6.0 - 9.3	20A	13335
OISDAWPK*	8.9 - 13.5	32A	13335
OISDAWPL*	13.2 - 20.0	35A	13335
OISDAWPM*	17.4 - 24.0	50A	14265
OISDAWPP*	23.0 - 32.0	63A	14935



Star Delta Starter - Semi Automatic

HSN CODE : 8536

Cat. No.	Overload Relay Range (A)	HRC Fuse Rating (EE Type) (max)	MRP [₹]
OISDSWPJ*	6.0 - 9.3	20A	11975
OISDSWPK*	8.9 - 13.5	32A	11975
OISDSWPL*	13.2 - 20.0	35A	11975
OISDSWPM*	17.4 - 24.0	50A	12875
OISDSWPP*	23.0 - 32.0	63A	13510

Star Delta Starter - Fully Automatic with Auto Unit SPP & 3 Position Auto Manual Switch

HSN CODE : 8536

Cat. No.	Overload Relay Range (A)	HRC Fuse Rating (EE Type) (max)	MRP [₹]
OISDYWPJ*	6.0 - 9.3	20A	15610
OISDYWPK*	8.9 - 13.5	32A	15610
OISDYWPL*	13.2 - 20.0	35A	15610
OISDYWPM*	17.4 - 24.0	50A	16600
OISDYWPP*	23.0 - 32.0	63A	17370

Star Delta Starter - Fully Automatic with Ammeter & Voltmeter

HSN CODE : 8536

Cat. No.	Overload Relay Range (A)	HRC Fuse Rating (EE Type) (max)	MRP [₹]
OISDPYWPL*	13.2 - 20.0	35 A	19190
OISDPYWPM*	17.4 - 24.0	50 A	20190
OISDPYWPP*	23.0 - 32.0	63 A	21115

'N' for 380-415VAC coil & 'Y' for 240-400VAC coil

Spares for Oil Starter

HSN CODE : 8538

Description			
Contact kit without coil for DOL - Power & Auxiliary contacts (set of fix contact, moving contact, hex screws, spring washer, spring clip, spring cap, contact spring)	OCK		570
Power kit without coil for all 3 contactor of star delta starter (fix contact, moving contact, hex screw, spring washer, spring clip, spring cap, contact spring)	Upto L Relay - OCKSD20		1405
	M, P Relay OCKSD30		1630
Auxiliary Contact Kit set for Star Delta Starter	Upto L Relay - OCKSDAUX20		375
	M, P Relay OCKSDAUX30		375
Coil -Main & Delta Contactor	220-400V	OCT	690
	240-400V	OCY	690
	380-415V	OCN	690
Coil -Star Contactor	220-400V	OCT-STAR	420
	240-400V	OCY-STAR	420
	380-415V	OCN-STAR	420
ON-Push Button		OPB-ON	180
OFF-Push Button		OPB-OFF	180
Incoming Mounting KIT for 20A			OCTKSD20 195
Incoming Mounting KIT for 30A			OCTKSD30 265

'NHD' Series 2 Pole Contactor

HSN CODE : 8536



AC# Rating at 240 V AC		Cat. No.	MRP [₹]
AC-1 (A)	AC-3 (A)		
20	12	CPG212*	1620
25	16	CPG216*	1860
35	20	CPG220*	2390
40	25	CPG225*	2800
40	32	CPG232*	3235
50	40	CPG240*	3785

'NHD' Series 4 Pole Contactor

HSN CODE : 8536



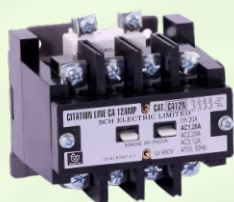
Size	AC1 (A)	AC3 Rating at 415 V AC			Cat. No.	MRP [₹]
		(A)	HP	KW		
CP12	20	12	7.5	5.5	CP12N*	3000
00	20	16	10	7.5	C00N*	3430
CP20	30	20	12.5	9.3	CP20N*	4275
0	32	25	15	11	N0N*	6235
01	40	32	20	15	N01N*	8350
1	50	40	25	18.5	N1N*	10805

HSN CODE : 8538

Auxiliary Contact Blocks - NHD/CPG	1 NO	001CB10	365
Auxiliary Contact Blocks - NHD/CPG	1 NO+1NC	001CB11	425
Auxiliary Contact Blocks - NHD/CPG	2NO	001CB20	425
Auxiliary Contact Blocks - NHD/CPG	2NC	001CB02	425

'NHD' Series 1 Aux + 3 P Contactor*

HSN CODE : 8536

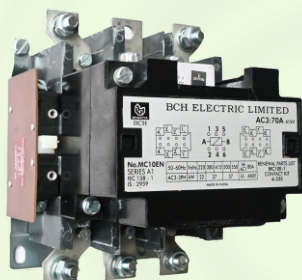


Size	AC1 (A)	AC3 Rating at 415 V			Cat. No.	MRP [₹]
		(A)	HP	KW		
CA12	20	12	7.5	5.5	CA12N	2640
CA16	20	16	10	7.5	CA16N	3070
CA20	30	20	12.5	9.3	CA20N	3780
NA25	32	25	15	11	NA25N	5525
NA32	40	32	20	15	NA32N	7395
NA40	50	40	25	18.5	NA40N	9385

*Auxiliary contact is at left side in 1 Aux+ 3P Contactor

Citation Series 3 Pole Contactor

HSN CODE : 8536



Contactor Size	AC# Rating at 415 V		Cat. No.	MRP [₹]	Cat. No.	MRP [₹]
	AC-3 (A)	HP / KW			Aux (1NO+1NC)	
C4	32	20 / 15	C4NE22M	7530	C4NE11M	7040
D	40	30 / 22	MC10DN22M	11915	MC10DN11M	10485
D1	50	33.5 / 25	MC10D1N22M	14015	MC10D1N11M	13190
E	70	50 / 37	MC10EN22M	21330	MC10EN11M	20895

New

HSN CODE : 8536



Contactor Size	AC# Rating at 415 V			Aux. Contact	Cat. No.	MRP [₹]
	AC-1 (A)	AC-3 (A)	HP / KW			
M-5	150	110	80 / 60	1 NO + 1 NC	MCE15MN3M5	29055
N	300	140	100 / 75	1 NO + 1 NC	MCE15NN3M7	43330
S	315	300	220 / 160	1 NO + 1 NC	MCE15SN3M7	63785

For other Coil Voltages, kindly refer 'Coil Voltage Master Table' at page 21

Overload Relay for Starters



Citation-M Overload Relays (Direct Mounting) with built in single phase protection

HSN CODE : 8536

HSN CODE : 8538



Cat. No.	Overload Relay Range (A)	MRP [₹]	Terminal Block for individual mounting	MRP [₹]
MC305ANA3A	0.195 - 0.31	1975	(Incoming) MC305TB1 (Outgoing) MC305TB3	290 290
MC305ANA3B	0.30 - 0.48	1975		
MC305ANA3C	0.47 - 0.75	1975		
MC305ANA3D	0.72 - 1.14	1975		
MC305ANA3E	1.07 - 1.70	1975		
MC305ANA3F	1.58 - 2.50	1975		
MC305ANA3G	2.40 - 3.80	1975		
MC305ANA3H	3.80 - 6.00	1975		
MC305ANA3J	6.00 - 9.30	1975		
MC305ANA3K	8.90 - 13.50	1975		
MC305ANA3L	13.20 - 20.0	2185	(Incoming) MC305TB2 (Outgoing) MC305TB3	290 290
MC305ANA3M	17.4 - 24.0	2410		
MC305ANA3N*	22.0 - 30.0	3110		
MC305ANA3P*	23.0 - 32.0	3140		
MC305ANA3Q*	26.0 - 40.0	3405		

*Overload relay type 'N', 'P' & 'Q' must be used with terminal block MC305TB3

CT Operated Overload Relays-Individual Mounting

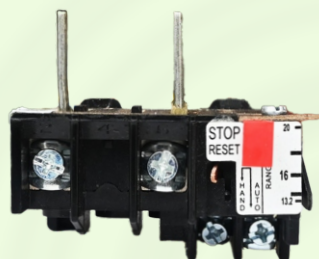
HSN CODE : 8536



Cat. No.	Overload Relay Range (A)	MRP [₹]
CT1MC305ANA3C	24.4 - 39.0	5955
CT2MC305ANA3C	37.6 - 60.0	7735
CT3MC305ANA3C	56.4 - 90.0	8685
CT4MC305ANA3C	84.6 - 135.0	8815
CT5MC305ANA3C	131.6 - 210.0	13330
CT6MC305ANA3C	188.0 - 300.0	15275
CT7MC305ANA3C	263.2 - 420.0	15790
CT8MC305ANA3C	376.0 - 600.0	18330

2 Pole Overload Relays (Direct Mounting)

HSN CODE : 8536



Cat. No.	Overload Relay Range (A)	MRP [₹]
MC307ANA2F	1.58 - 2.50	1010
MC307ANA2G	2.40 - 3.80	1010
MC307ANA2H	3.80 - 6.00	1010
MC307ANA2J	6.00 - 9.30	1010
MC307ANA2K	8.90 - 13.50	1010
MC307ANA2L	13.20 - 20.0	1170
MC307ANA2M	17.4 - 24.0	1250
MC307ANA2N	22 - 30	1455
MC307ANA2P	23 - 32	1485
New MC307ANA2Q	28 - 40	1645

WP Overload Relays for Shakti WP & Oil Starter

HSN CODE : 8536



Cat. No.	Overload Relay Range (A)	MRP [₹]
MC307ANA3J / MC307ANA3J-OS	6.00 - 9.30	1785
MC307ANA3K / MC307ANA3K-OS	8.90 - 13.50	1785
MC307ANA3L / MC307ANA3L-OS	13.20 - 20.0	1980
MC307ANA3M / MC307ANA3M-OS	17.4 - 24.0	2190
MC307ANA3N	22.0 - 30.0	2630
MC307ANA3P	23.0 - 32.0	2710

Spares for Starter



Spares for Shakti Starters

HSN CODE : 8538

Cat. No.	Description	MRP [₹]
SHA	Contact Kit*	1185
SHAA	Contact Kit 12A (1 Aux + 3P)**	990
SHZ	Coil 190- 400 V	495
SHCC	Contact carrier	105
SHPB	Extended Button Assembly	310
SHCO	Shakti Contactor for DOL 20A	3070
SHACO	Shakti Contactor for Star Delta 16A	3425
SHCOA	Shakti Contactor for DOL 12A	2565
NCPNYAU*-5S or 5M	SPP (for ASX & OISDY)-6 Wire	975
CPTB630	Terminal Block 30A 6-way (Auto DOL)	330
CPAMS-3P/ASX	Auto Manual Switch 3-pos (Auto DOL)	555

* Shakti Kit consist of - 8 Fixed main contacts, 4 moving main contacts, 4 springs & 4 retainers

** Shakti 1 Aux + 3P Kit consist of - 6 Fixed main contacts, 3 moving main contacts, 2 Aux main contacts, 1 Aux moving contact, 4 springs & 4 retainers

HSN CODE : 8538

Cat No.	Description	MRP[₹]
SPSRW8	Power Terminal Screw - 4p NHD Contactor	125
SPSRWSD4	Screw (4nos.) for Star Delta Starter	50
SPSRWDOL2	Screw (2nos.) for DOL Starter-Citation/Shakti	35
SPGR2	Gromet (2nos.) for DOL Starter-Citation/Shakti	25

Spares for 3-Phase Submersible Pump Starter

Cat. No.	Description	MRP [₹]
NCPYAU*-5S or 5M	SPP (3 Position SPS)-6 wire	975
BCHSPP1*-5S or 5M	SPP 6-wire	975
BCHSPP2*	SPP Pro 6-wire	975
SPSATG	Electronic Timer (Star Delta)	1520
SPSATWB-30S	Electronic Timer (Star Delta)	1520
CPAM25	Ammeter 25A	650
CPAM50	Ammeter 50A	650
CPAM100	Ammeter 100A	685
CPVM500	Voltmeter 500V	650
CPTB215	Terminal Block 15A 2 way	85
CPTB360	Terminal Block 60A 3 way	250
CPTB660	Terminal Block 60A 6 way	410
CPTB3100	Terminal Block 100A 3 way	840
CPMB	Mounting Bracket Set	170
CPAMS-2P	Auto Manual Switch 2 position	420
CPAMS-3P	Auto Manual Switch 3 position	450
CPVSS	Voltmeter Selector Switch	455
HEA11GM-PB	Start PB (Green)	235
HEA11RM-PB	Stop PB (Red)	235
HCB10	Aux Block (1 NO)	140
HCB01	Aux Block (1 NC)	140
CPLED-R240	Incoming LED - RED	235
CPLED-Y240	Incoming LED - YELLOW	235
CPLED-B240	Incoming LED - BLUE	235

Spares for Citation M Starters

HSN CODE : 8538

Cat. No.	Description	MRP [₹]
SP100PB3	PB assembly for Citation Starters (Manufactured Before Apr'24)	370
SP100PBC1	PB assembly for Citation Starters (Manufactured from Apr'24 onwards)	370
SP100CB	Start actuator Block for DOL	330
SP100CBS	Start actuator Block for SD	330
SP100TB	Terminal Block for Star Delta Starters	320
CPTB975	Terminal Block for SD Starters (40-50 HP)	985
SPSATG	Electronic Timer (Star Delta)	1520
For 250-375 HP SD Starter		
TSFB-R	Push Button (RED)	340
TSFB-G	Push Button (Green)	340
050N1	Aux Contact Block(1NO+1NC)	450

Discontinued Cat Code	SPP Type	Alternate Cat Code	SPP used in
CPAU*	2-Pos SPP	NCPAU* - 5*	2-Pos SPS
CPYAU*	3-Pos SPP	NCPYAU* - 5*	3-Pos SPS
CPNYAU*	3-Pos SPP	NCPNYAU* - 5*	Oil SD & Auto DOL

*Extra plate to be used alongwith alternate SPP

Spares for 1-Phase Submersible Pump Starter

HSN CODE : 8538

Cat. No.	Description	MRP [₹]
ILR-B	"ON" Indication Lamp	90
SPAM-10	Ammeter 10A	650
SPAM-15	Ammeter 15A	650
SPAM-25	Ammeter 25A	650
SPAM-50	Ammeter 50A	650
SPVM-300	Voltmeter 300V	650
CPTB530	Terminal Block 30A 5 way (Mini Version)	165
CPTB530H	Terminal Block 30A 5 way (Contr. Version)	270
CPTB330	Terminal Block 30A 3 way	120
CPTB240	Terminal Block 40A 2 way	170
SPGC	"ON" Push Button GREEN upto 24A relay range	305
SPGB	"ON" Push Button GREEN For 32A relay range	305
SPRC	"OFF" Push Button RED	250
MC305TB4	Outgoing Side Terminal Block for 23-32A relay	290

Spares for Freedom DOL

HSN CODE : 8538

Cat. No.	Description	MRP [₹]
C320SCB	Start Contact Block	220
CEPBI	Push Button - Green	110
CEPBO	Push Button - Red	110

Spares for Starter



KIT for NHD

HSN CODE : 8538

Contactor Rating (AC-3)	4P KIT Cat Code	MRP [₹]	1 Aux + 3P KIT Cat. No.	MRP [₹]	1P KIT Cat. No.	MRP [₹]
12A	SP90E1	1135	SP90E2	1030	SP90E01	305
16A	SP90A1	1375	SP90A2	1255	SP90A01	370
20A	SP90F1	1810	SP90F2	1645	SP90F01	480
25A	SP90B1	2595	SP90B2	2360	SP90B01	665
32A	SP90D1	3510	SP90D2	3190	SP90D01	910
40A	SP90C1	4310	SP90C2	3915	SP90C01	1100

* 4P Kit consist of - 8 Fixed main contacts, 4 moving main contacts, 4 springs & 4 retainers

* 1 Aux + 3P Kit consist of - 6 Fixed main contacts, 3 moving main contacts, 2 Aux main contacts, 1 Aux moving contact, 4 springs & 4 retainers

KIT for CPG

HSN CODE : 8538

Contactor Rating	Cat. No.	MRP [₹]
12A	CPG122PSP	630
16A	CPG162PSP	715
20A	CPG202PSP	1130
25A	CPG252PSP	1805
32A	CPG322PSP	1895
40A	CPG402PSP	2650

* 2P Kit consist of - 4 Fixed contacts, 2 moving contacts, 2 springs & 2 retainers

2P Contactor

HSN CODE : 8536 2P Contactor Kit

HSN CODE : 8538

Contactor Rating	Cat. No.	MRP [₹]
16A	CPGN216*	1515
20A	CPGN220*	1710
25A	CPGN225*	1940

* 2P Kit consist of - 4 Fixed contacts, 2 moving contacts, 2 springs & 2 retainers



Spares for P series SPS

HSN CODE : 8538

Cat. No.	Description	MRP [₹]
CPRS-ON-OFF	ROCKER SWITCH ON-OFF	90
CPTB210	10A, 2 way TB for P series SPS	80
CPLED-R	LED RED 415V	235
CPLED-A	LED AMBER 415V	235
SP100CBP	Start Actuator block for P series SPS	330
CPAM10-WH, CPAM15-WH, CPAM25-WH	Ammeter with White Bezel (for Shakti P SPS)	650
CPVM500-WH	Voltmeter 500V White Bezel	650

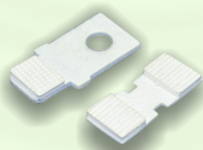
Spare Coil & Carrier

Contactor	Cat. No.	MRP [₹]
Magnet Coil for NHD/ CPG	SP90MC*	505
Carrier for NHD	SP90CC	115
Carrier for CPG	CPG2PCC	75

Spares for 1-ph Dry Run SPS

HSN CODE : 8538

Cat. No.	Description	MRP [₹]
SPDRPH0.75-S1	DRY RUN PROTECTOR S1, 3.8-6.0A, 0.75 HP	1100
SPDRPJ1-S1	DRY RUN PROTECTOR S1, 6.0-9.3A, 1 HP	1100
SPDRPK1.5-S1	DRY RUN PROTECTOR S1, 8.9-13.5A, 1.5 HP	1100
SPDRPL2-S1	DRY RUN PROTECTOR S1, 13.2-20A, 2 HP	1100
SPDRPM3-S1	DRY RUN PROTECTOR S1, 17.4-24A, 3 HP	1100
SPDRPN3-S1	DRY RUN PROTECTOR S1, 22-30A, 3 HP	1100
SPDRPP5-S1	DRY RUN PROTECTOR S1, 23-32A, 5HP	1100
SPDRP-CT-S1	CT FOR DRY RUN PROTECTOR S1	130
SPDRPCONNECTOR-S1	CONNECTOR FOR DRY RUN PROTECTOR S1	70



Dual Meter

HSN CODE : 9030

Cat. No.	MRP [₹]
CPAM10VM300, CPAM15VM300, CPAM25VM300, CPAM30VM300, CPAM50VM300	890
CPAM10VM500, CPAM15VM500, CPAM30VM500, CPAM60VM500	950
CPAM30-60VM500S72	925
CPAM60-120VM500S72	1000
CPAM30-60VM500S96	1180
CPAM60-120VM500S96	1320

Spare Freedom Overload Relays for Citation P32 to Citation P100

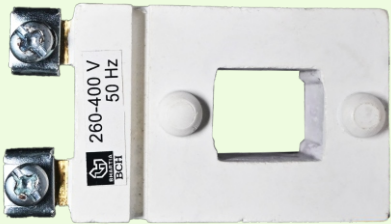
HSN CODE : 8536

Cat. No.	Overload Relay Range (A)	MRP [₹]
MC318GNA3B	22 - 32	3140
MC318GNA3C	29 - 42	3150
MC318GNA3D	36 - 52	4255
MC318GNA3E	45 - 63	4740
MC318GNA3F	60 - 80	5830

Adaptor for Individual mounting Cat Code- C318F2 (MRP Rs. 580)



Coil Band Master Table



COIL VOLTAGE : MASTER TABLE

	PRODUCT	160-220V	170-240V	220-240V	230-360V	260-400V	310-400V	190-400V	230-420V	275-420V	380-415V	415V	440V	550V
	WORKING VOLTAGE BAND	136-242V	145-264V	187-264V	196-396V	221-440V	264-440V	162-440V	196-462V	234-462V	323-456V	353-456V	374-484V	468-605V
CPG 2P	CPG216	BW	BBW	H	-	-	-	-	-	-	N	-	-	-
	CPG225	BW	BBW	H	-	-	-	-	-	-	N	-	-	-
	CPG240	BW	BBW	H	-	-	-	-	-	-	N	-	-	-
SHAKTI	SHAKTI DOL	-	-	-	-	G	-	Z	ZB	-	N	-	-	-
	SHAKTI STAR DELTA	-	-	-	-	G	-	-	-	-	N	-	-	-
	CP12, C00N, CP20	-	-	H	-	G	-	-	-	MB	N	-	C	D
NHD 4P	N0N	-	-	H	LV	G	-	-	-	MB	N	-	-	D
	N01N	-	-	H	LV	-	WB	-	-	-	N	-	C	-
	N1N	-	-	H	-	-	WB	-	-	-	N	-	C	-
CITATION	C4 & MC10D	-	-	-	-	-	-	-	-	-	-	M	C	D
	MC10EN	-	-	-	-	-	-	-	-	-	-	M	C	D
	MCE15L TO M5	-	-	-	-	-	-	-	-	-	-	M	C	D
FREEDOM SERIES	MCE15N, Q & S	-	-	-	-	-	-	-	-	-	-	M	C	D

MCB/Isolator/MCCB/Distribution Boxes



MCB - B CURVE

HSN Code : 8536

Rated Current	SP	DP	TP	FP
6 - 32A	285	1010	1595	2140
40A	665	1575	2420	3050
63A	675	1620	2485	3125

MCB - C CURVE

HSN Code : 8536

Rated Current	SP	SPN	DP	TP	TPN	FP
6 - 32A	285	960	1010	1595	2050	2140
40A	665	1430	1575	2420	2775	3050
63A	675	1475	1620	2485	2840	3125

Order in multiple of SP-12 Nos., SPN-6 Nos., DP-6 Nos., TP-4 Nos., TPN-3 Nos., FP-3 Nos.

ISOLATORS

HSN Code : 8536

Poles	Standard Pack of	Rated Current	Cat. No.	MRP [₹]
2P	6 units	40A	BCHISODP40	685
	6 units	63A	BCHISODP63	845
3P	4 units	40A	BCHISOTP40	1220
	4 units	63A	BCHISOTP63	1395
4P	3 units	40A	BCHISOF40	1430
	3 units	63A	BCHISOF63	1550



MCCB

HSN Code : 8536

I _{cu} (Overload Setting)	Rated Current	Cat. No.	MRP [₹]
10kA @ (Fixed)	100, 80 (with spreader terminals)	XFE***P	2890
	100, 80 (without spreader terminals)	XFE***P-WT	2750
	63, 50, 40, 32, 25, 20, 16	XFE***P	2750

Code - Current Rating

Rating	16A	20A	25A	32A	40A	50A	63A	80A	100A
*Code	016	020	025	032	040	050	063	080	100

MCCB of any other rating can be offered on request, for more details please refer to Industrial product price list or contact sales team



MCB/MCCB Enclosure

HSN Code : 8537

Type	Product	Description	Cat. No.	MRP [₹]
MCB Enclosure	Enclosure only without MCB	SP, ONE WAY MCB DB	BCHOWMCBDBSP	695
		DP, ONE WAY MCB DB	BCHOWMCBDBDP	695
		TP, ONE WAY MCB DB	BCHOWMCBDBTP	750
		FP, ONE WAY MCB DB	BCHOWMCBDBFP	750
			HSN Code : 8536	
MCCB Enclosure	Enclosure only (without MCCB)	F1 MCCB Enclosure	F1EU3P	1330
		F2 MCCB Enclosure	F2EU3P	2875

Above MCB/MCCB with the enclosure serves as an ideal solution for main switch.



Complete range of BCH MCB Distribution Boxes are available.

For more details please refer to Comprehensive price list or contact sales team.

BCH Three Core Flat Cables with annealed bare & bunched copper conductor insulated & sheathed with PVC for submersible pump motors for voltage grade 1100 V as per I.S. 694 / 2010, conforming & marked with I.S. 694 / 2010 upto 95 sqmm. 3 Core Flat Cable PVC Insulated Type CS

HSN Code : 8544



BCH Code	Flat Cable	LP Per 500 Mtrs in [₹]	Remark
CS0010BM	1.0 Sqmm x 3 core Flat cable	On request	Also Available in 100 mtrs, 500 mtrs 1000 mtrs in drum as well as in wrap packing
CS0015BM	1.5 Sqmm x 3 core Flat cable	On request	
CS0025BM	2.5 Sqmm x 3 core Flat cable	On request	
CS0040BM	4.0 Sqmm x 3 core Flat cable	On request	
CS0060BM	6.0 Sqmm x 3 core Flat cable	On request	
CS0080BM	8.0 Sqmm x 3 core Flat cable	On request	
CS0100BM	10 Sqmm x 3 core Flat cable	On request	
CS0160BM	16 Sqmm x 3 core Flat cable	On request	
CS0250BM	25 Sqmm x 3 core Flat cable	On request	
CS0350BM	35 Sqmm x 3 core Flat cable	On request	
CS0500BM	50 Sqmm x 3 core Flat cable	On request	
CS0700BM	70 Sqmm x 3 core Flat cable	On request	
CS0950BM	95 Sqmm x 3 core Flat cable	On request	
CS1200BM	120 Sqmm x 3 core Flat cable	On request	

BCH Three Core Flat Cables with XLPE insulation & ROHS PVC sheath for withstanding temperature upto 90 deg.C.

HSN Code : 8544



BCH Code	FLAT CS XLPE CABLE	LP Per 500 Mtrs in [₹]	Remark
CFTEX-03-0015BM	1.5 Sq. mm x 3 core Flat CS XLPE CABLE	On request	Also Available in 100 mtrs, 500 mtrs 1000 mtrs in drum as well as in wrap packing
CFTEX-03-0025BM	2.5 Sq. mm x 3 core Flat CS XLPE CABLE	On request	
CFTEX-03-0040BM	4.0 Sq. mm x 3 core Flat CS XLPE CABLE	On request	
CFTEX-03-0060BM	6.0 Sq. mm x 3 core Flat CS XLPE CABLE	On request	
CFTEX-03-0080BM	8.0 Sq. mm x 3 core Flat CS XLPE CABLE	On request	
CFTEX-03-0100BM	10 Sq. mm x 3 core Flat CS XLPE CABLE	On request	
CFTEX-03-0160BM	16 Sq. mm x 3 core Flat CS XLPE CABLE	On request	
CFTEX-03-0250BM	25 Sq. mm x 3 core Flat CS XLPE CABLE	On request	
CFTEX-03-0350BM	35 Sq. mm x 3 core Flat CS XLPE CABLE	On request	
CFTEX-03-0500BM	50 Sq. mm x 3 core Flat CS XLPE CABLE	On request	

BCH Three Core Flat Cables with XLPE insulation & ROHS PVC sheath for withstanding temperature upto 90 deg.C.

HSN Code : 8544



BCH Code	Flat Cable	LP Per 500 Mtrs in [₹]	Remark
CFTX-03-0015BM	1.5 Sqmm x 3 core Flat cable XLPE insulated Thick	On request	Also Available in 100 mtrs, 500 mtrs 1000 mtrs in drum as well as in wrap packing
CFTX-03-0025BM	2.5 Sqmm x 3 core Flat cable XLPE insulated Thick	On request	
CFTX-03-0040BM	4.0 Sqmm x 3 core Flat cable XLPE insulated Thick	On request	
CFTX-03-0060BM	6.0 Sqmm x 3 core Flat cable XLPE insulated Thick	On request	
CFTX-03-0080BM	8.0 Sqmm x 3 core Flat cable XLPE insulated Thick	On request	
CFTX-03-0100BM	10 Sqmm x 3 core Flat cable XLPE insulated Thick	On request	
CFTX-03-0160BM	16 Sqmm x 3 core Flat cable XLPE insulated Thick	On request	

BCH Three Core Flat Cables with XLPE insulation & ROHS PVC sheath for withstanding temperature upto 90 deg.C.

HSN Code : 8544



BCH Code	Flat Cable	LP Per 500 Mtrs in [₹]	Remark
CFXP-03-0015BM	1.5 Sqmm x 3 core Flat cable XLPE insulated	On request	Also Available in 100 mtrs, 500 mtrs 1000 mtrs in drum as well as in wrap packing
CFXP-03-0025BM	2.5 Sqmm x 3 core Flat cable XLPE insulated	On request	
CFXP-03-0040BM	4.0 Sqmm x 3 core Flat cable XLPE insulated	On request	
CFXP-03-0060BM	6.0 Sqmm x 3 core Flat cable XLPE insulated	On request	

Note: At the end of every code "A" stand for 100 mtrs. , "BM" stand for 500 mtrs. , "CM" stand for 1000 mtrs. For price, please contact our nearest sales office.



Price List

General Terms & Conditions

Prices are subject to change without any prior notice and will be applicable as prevailing at the time of dispatch.

- The prices are ex-works basis..
- The prices given in this list are effective as on date and are subject to change without notice.
- Maximum Retail Price (MRP) mentioned are inclusive of GST.
- The List Prices (LP) mentioned are exclusive of GST.
- The duties, taxes and other statutory levies are based on rates prevailing at the time of billing. Any subsequent revision of those rates having retrospective effective shall be to customer's account.
- In case where any GST exemption has been claimed, the purchaser is responsible for providing the necessary GST exemption form within the specified period, failing which the purchaser would be liable for the payment of full GST plus applicable interest and penalties
- All Prices are in Indian Rupees (₹).
- Alteration made after receipt of confirmation of order are subject to price & delivery revisions and any other expenses or levies
- The dispute, if any, will be resolved mutually by discussion. However, if no settlement is forthcoming then, the Courts at New Delhi shall only have territorial jurisdiction to hear and decide the dispute.

Warranty

All products, unless specifically mentioned otherwise, shall have warranty, against manufacturing defects for a period of 18* months from the date of invoicing & 24 months from date of manufacturing whichever is later subject to the provision of proper usage and does not cover defects arising out of fire, accident, inefficient maintenance, faulty operation and willful or accidental damage. The manufacturer shall not be liable for any consequential loss, injury or damages attributable to defect or failure of its products.

* Proof of purchase to be retained to avail warranty.

Power Control Products

Starters & Submersible Pump Starters

Industrial Enclosures

Industrial Products

Wires & Cables

Motor Control Products

Power Bus Duct

Customised Solution

Automation

a strong commitment to serve better always ...



BCH ELECTRIC LIMITED



1800-103-9262

customercare@bchindia.com

Visit us at : www.bchindia.com

Registered & Corporate Office : 1105, New Delhi House, 27, Barakhamba Road, New Delhi - 110 001 Tel. : 91-11- 43673100

CIN : U31103DL1965PLC425953, **Customercare No.** 1800-103-9262, **E-mail :** marketing@bchindia.com

Works 1 : 20/4, Mathura Road, Faridabad - 121 006 (Haryana) Tel. : 0129-4063000/4293000 Fax : 0129-2304016

Works 2 : 64-68, Sector-7, IIE, Pant Nagar, Rudrapur, Udham Singh Nagar - 263 153 (Uttarakhand) Tel. : 05944-250214/16 Fax : 05944-250215

Sales Offices :

Ahmedabad
401, Ship Zeveri,
Beside Shyamal Iconic,
Above Westside,
Shyamal Cross Road,
Ahmedabad - 380015
E-mail: ahmedabad@bchindia.com

Bangalore
2nd Floor, 130/5,
K.H. Road (Double road),
Bangalore - 560 027
Tel. : 080-41144879 / 22236759
E-mail : bangalore@bchindia.com

Bhubaneswar
Mallick Commercial
Complex Plot No.: A/69, unit - 3
Bhubaneswar - 751 001
Tel. : 0674-2380988
E-mail: bhubaneswar@bchindia.com

Chandigarh (Panchkula)
SCO -270, 2nd Floor,
Sector-16, Panchkula
Haryana-134 113
Tel. : 0172-5078957 / 5049905
E-mail: chandigarh@bchindia.com

Chennai
Flat No. 3A, 3rd Floor,
Sree Apartments,
No.508, TTK Road,
Alwarpet, Chennai 600 018
Tel.: 044-24337046, 24337047
E-mail : chennai@bchindia.com

Coimbatore
87, Dr. Nanjappa Road,
Coimbatore - 641 018
Tel. : 0422-2305311 / 2302599
E-mail : coimbatore@bchindia.com

Delhi 1
801, Akash Deep Building,
26A, Barakhamba Road,
New Delhi - 110 001
Tel. : 011-23313878 / 43518200
E-mail : delhi@bchindia.com

Delhi 2
710, Deepali Building, 92
Nehru Place, New Delhi - 110
019 Tel. : 011-45720334
E-mail : delhi2@bchindia.com

Dehradun
8, Co-operative Industrial Estate,
Patel Nagar, Dehradun-248001
E-mail : dehradun@bchindia.com

Faridabad
20/4, Mathura Road,
Faridabad - 121 006 (Haryana)
Telfax. : 0129-4293009
E-mail : faridabad@bchindia.com

Hyderabad
1-8-303/48/13/102, Arya One,
2nd Floor, P. G. Road,
Secunderabad - 500 003
Tel. : 040-66206263/27890306
Fax : 040-66207273
E-mail : hyderabad@bchindia.com

Indore
330-331, Indraprastha Tower,
3rd Floor, 6, M.G. Road,
Indore - 452 001
Tel. : 0731-2510011 / 2510012
E-mail : indore@bchindia.com

Jaipur
25, Hathroi, Gopalbari,
Jaipur - 302 001
Tel. : 0141-2363521
E-mail : jaipur@bchindia.com

Jamshedpur
A.J. Tower, 2B,
2nd Floor, R-Road, Bistupur,
Jamshedpur - 831 001
E-mail : jamshedpur@bchindia.com

Kolkata
Block 1E, 216,
Acharya Jagadish Chandra Bose
Road, Kolkata - 700 017
Tel. : 033-22871728 / 46021884
E-mail : kolkata@bchindia.com

Lucknow
Shop No. 3, First Floor,
Tower T-10, Millennium Place IBB - 2,
Sushant Golf City, Sultanpur Road,
Lucknow U.P. - 226030
Tel. : 0522-4025597/4025997
E-mail : lucknow@bchindia.com

Ludhiana
S.C.O.- 18, 2nd Floor,
Feroze Gandhi Market,
Ludhiana - 140 001
Tel. : 0161-5021807/5022808
E-mail : ludhiana@bchindia.com

Madurai
12, Parvathi Plaza-3rd Floor,
70 Feet Road, Ellis Nagar
Madurai-625016, Tamilnadu
Email: madurai@bchindia.com

Mumbai
A-151, Mittal Tower,
Nariman Point,
Mumbai - 400 021
Tel. : 022-22822947/22850162
Fax : 022-22822858
E-mail : mumbai@bchindia.com

Patna
No.703, 7th Floor, Luv Kush
Tower, Exhibition Road,
Patna - 800001

Pune
8, Sarosh Bhavan,
16-B/1, Dr. Ambedkar Road,
Pune - 411 001
Tel. : 020-41210002
E-mail : pune@bchindia.com

Raipur
6th Floor, Office No. 607,
Babylon Capital, Near Oswal
Petrol Pump, VIP Chowk,
G.E. Road, Raipur - 492 006
Tel. : 0771- 4045053
E-mail : raipur@bchindia.com

Vadodara
301, Third Floor, "Florence Classic",
10, Ashapuri Co-Op. Hsg. Soc. Ltd., Opp. VUDA
Housing, Near Cow Circle, Akota, Vadodara - 390 020
Tel. : 0265-2345068/2345069
Telefax : 0265-2345068,
E-mail : vadodara@bchindia.com

Other Branch Locations

Cochin : cochin@bchindia.com, **Guwahati :** guwahati@bchindia.com, **Vishakapatnam :** vizag@bchindia.com, **Surat :** surat@bchindia.com, **Trichy :** Trichy@bchindia.com

Resident Engineer Locations

Agra	Bhopal	Hospet	Kanpur	Muzaffarnagar	Rajahmundry	Silliguri	Varanasi
Ahmednagar	Calicut	Hubli	Karimnagar	Nanded	Ranchi	Solapur	Vijaywada
Ambala	Goa	Idukki	Karnal	Nashik	Rourkela	Srinagar	Vishakapatnam
Anantapur	Gulbarga	Jabalpur	Kota	Panipat	Rudarpur	Trivendrum	Vellore
Ankleshwar	Gurgaon	Jalandhar	Kurnool	Patna	Salem	Tirunelveli	Vilupuram
Aurangabad	Haridwar	Jodhpur	Midnapore	Puducherry	Sikar	Udaipur	Warangal
Bhiwadi	Hisar	Kashipur	Mahua	Rajkot	Silchar	Vapi	Yamunanagar

Since product improvement is a continuous process, the data furnished in this brochure may undergo revision without prior notice.