



PRICE LIST

Effective : 6th June 2018



ENCLOSURES



BCH ELECTRIC LIMITED

Modern facilities at Faridabad & Rudrapur



BCH ELECTRIC LIMITED

Our Strengths:

- ◆ State-of-the-art product development and R&D
- ◆ Modern manufacturing facilities
- ◆ Tool room with latest facilities
- ◆ Serving customers for five decades
- ◆ Presence in ~50 locations
- ◆ 650 channel partners
- ◆ ISO 14001:2015 and ISO 9001:2015 certified company

Core Values:

- ◆ Integrity
- ◆ Nurturing People
- ◆ Commitment to Customers
- ◆ Striving for Excellence
- ◆ Long Term Thinking



Quality Policy

We are committed to provide products and services meeting or exceeding customers needs and expectations.

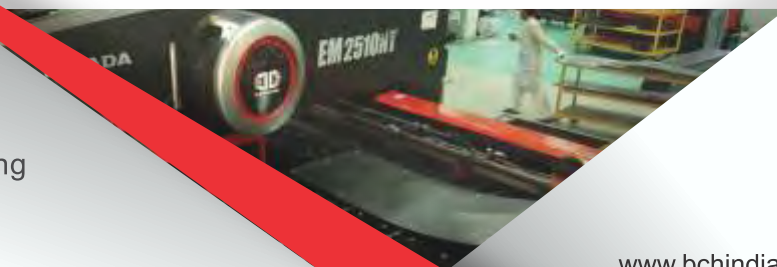
Continual improvement and learning aimed at customer satisfaction through involvement of people shall be the guiding principle.

Health & Safety Policy

It is our policy to comply with applicable statutory and regulatory requirements related to health and safety.

We shall endeavor to achieve this by providing safe working conditions and promoting awareness through training.

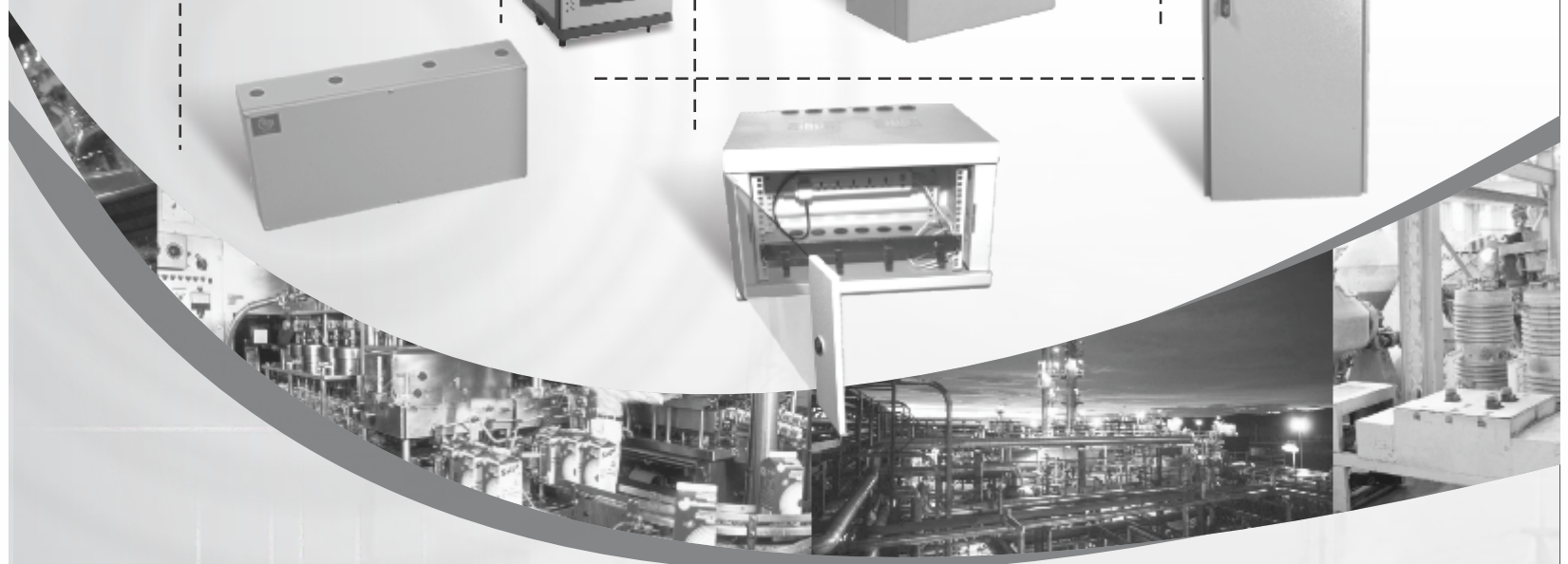
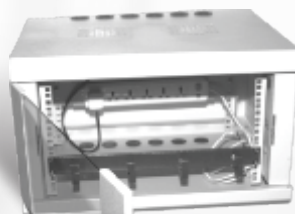
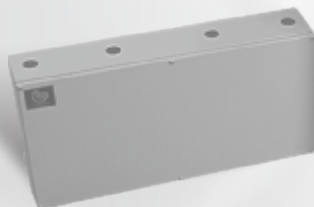
www.bchindia.com



Enclosure Systems



- **Bhartia Boxes IP: 55, IP: 66** 2
- **'BCH-SS' (Stainless Steel) Boxes** 3
- **Terminal Boxes IP:55 & IP:66** 3
- **Techno - Modular Enclosures** 4-5
- **Smartline - Modular Enclosures** 6
- **Semi-Modular Enclosure** 7
- **TEOS Plus Enclosure** 8
- **Compartmentalized Enclosure (Fixed & Draw-out)** 9
- **IT Racks - 19" and ETSI Racks** 10-12



Enclosure Systems BCH

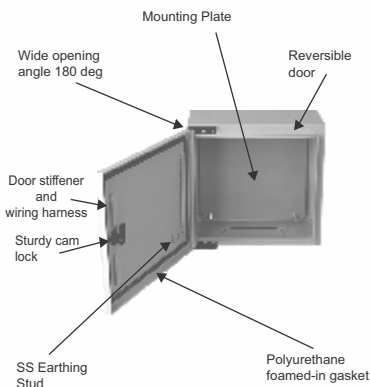
Bhartia Boxes

HSN Code : 8538



- 51 Different Versions
- Single/Double door versions
- Min. Size : 200 X 200 X 150
- Max Size : 1200 X 1400 X 400
- IP 55/IP66

Double door version



Technical Particulars (BHARTIA BOXES)

- Fabricated from 1.2mm / 1.6mm CRCA sheet steel (Sizes upto BIL-50180 made from 1.2mm CRCA, beyond this using 1.6mm CRCA)
- Foamed-in PU gasket
- Hinged door, interchangeable LHS / RHS, opening angle 180 deg for standard hinge & 120 deg for concealed hinge in bigger sizes.
- IP-55 & 66 Degree of protection
- Cable gland plate 2mm thick provided at bottom
- Cam locking arrangement
- Powder coated to RAL : 7035 structure finish
- Mounting Plate made up of 2.0mm Galvanised steel

Note : Cutout charges will be extra

: Wall mounting bracket set is an additional accessory (for Bhartia Box & Terminal box it is not a part of standard packing)

HSN Code : 8538

Type	Cat. No.	MOQ	List Price [₹]
Set of Wall Mounting bracket (small)	BIL-WM-S	1	100
Set of Wall Mounting bracket (big)	BIL-WM-B	1	120

Note :

- * Set of wall mounting bracket (small) is suitable for all range of terminal boxes and Bhartia boxes upto size : 400x500x200mm.
- * Set of wall mounting bracket (big) is suitable for Bhartia boxes beyond size : 400x500x200mm.

Effective from 06.06.2018

Type	Size (WxHxD) mm	IP-55 Range			IP-66 Range	
		MOQ Nos.	Cat. No.	List Price [₹]	Cat. No.	List Price [₹]
SINGLE DOOR BOX	200x200x150	1	BIL-50000	1760	BIL-60000	1790
SINGLE DOOR BOX	200x300x150	1	BIL-50010	2120	BIL-60010	2170
SINGLE DOOR BOX	250x300x150	1	BIL-50020	2210	BIL-60020	2280
SINGLE DOOR BOX	300x300x150	1	BIL-50030	2330	BIL-60030	2360
SINGLE DOOR BOX	300x300x200	1	BIL-50050	2540	BIL-60050	2690
SINGLE DOOR BOX	300x400x150	1	BIL-50060	2650	BIL-60060	2790
SINGLE DOOR BOX	300x400x200	1	BIL-50080	2970	BIL-60080	2990
SINGLE DOOR BOX	400x300x150	1	BIL-50090	2590	BIL-60090	2750
SINGLE DOOR BOX	400x300x200	1	BIL-50110	2910	BIL-60110	2950
SINGLE DOOR BOX	400x400x150	1	BIL-50120	2970	BIL-60120	3030
SINGLE DOOR BOX	400x400x200	1	BIL-50140	3150	BIL-60140	3250
SINGLE DOOR BOX	400x500x150	1	BIL-50150	3350	BIL-60150	3520
SINGLE DOOR BOX	400x500x200	1	BIL-50170	3550	BIL-60170	3650
SINGLE DOOR BOX	500x500x200	1	BIL-50180	4190		
SINGLE DOOR BOX	400x600x200	1	BIL-50190	4190	BIL-60190	4250
SINGLE DOOR BOX	500x600x200	1	BIL-50210	4810	BIL-60210	4950
SINGLE DOOR BOX	500x700x200	1	BIL-50220	5470		
SINGLE DOOR BOX	500x700x300	1	BIL-50230	6290		
SINGLE DOOR BOX	600x400x200	1	BIL-50240	4250	BIL-60240	4430
SINGLE DOOR BOX	600x400x300	1	BIL-50250	5490		
SINGLE DOOR BOX	600x500x200	1	BIL-50260	4950	BIL-60260	5350
SINGLE DOOR BOX	600x600x200	1	BIL-50270	5150		
SINGLE DOOR BOX	600x600x300	1	BIL-50280	6190		
SINGLE DOOR BOX	600x700x200	1	BIL-50290	6210		
SINGLE DOOR BOX	600x800x200	1	BIL-50300	6230		
SINGLE DOOR BOX	600x800x300	1	BIL-50320	7120		
SINGLE DOOR BOX	600x1000x200	1	BIL-50330	7850		
SINGLE DOOR BOX	600x1000x300	1	BIL-50340	8900		
SINGLE DOOR BOX	800x800x300	1	BIL-50310	8300		
SINGLE DOOR BOX	800x1000x200	1	BIL-50350	9250		
SINGLE DOOR BOX	800x1000x250	1	BIL-50360	9450		
SINGLE DOOR BOX	800x1000x300	1	BIL-50390	9550		
SINGLE DOOR BOX	800x1200x300	1	BIL-50395	11900		
DOUBLE DOOR BOX	1000x800x200	1	BIL-50500	9980		
DOUBLE DOOR BOX	1000x800x300	1	BIL-50520	11450		
DOUBLE DOOR BOX	1000x1000x300	1	BIL-50540	13310		
DOUBLE DOOR BOX	1000x1200x300	1	BIL-50550	15300		
DOUBLE DOOR BOX	1000x1400x300	1	BIL-50560	18300		
DOUBLE DOOR BOX	1200x1400x300	1	BIL-50570	20350		
DOUBLE DOOR BOX	1000x1400x400	1	BIL-50580	19300		
DOUBLE DOOR BOX	1200x1400x400	1	BIL-50590	21250		

MOQ. Minimum order quantity in nos.

Canopy for Bhartia Boxes

HSN Code : 8538

Size (WxHxD) mm	Cat. No.	MOQ Nos.	List Price [₹]	Size (WxHxD) mm	Cat. No.	MOQ Nos.	List Price [₹]
200WX150D	BIL-12-CAN-2015	1	480	600WX200D	BIL-16-CAN-6020	1	920
250WX150D	BIL-12-CAN-2515	1	540	600WX300D	BIL-16-CAN-6030	1	1120
300WX150D	BIL-12-CAN-3015	1	580	800WX300D	BIL-16-CAN-8030	1	1370
300WX200D	BIL-12-CAN-3020	1	640	800WX200D	BIL-16-CAN-8020	1	1110
400WX150D	BIL-12-CAN-4015	1	650	800WX250D	BIL-16-CAN-8025	1	1210
400WX200D	BIL-12-CAN-4020	1	730	1000WX200D	BIL-16-CAN-1020	1	1310
500WX200D	BIL-12-CAN-5020	1	820	1000WX300D	BIL-16-CAN-1030	1	1610
500WX300D	BIL-12-CAN-5030	1	1010				

*List Prices are Ex-works Faridabad. For detail refer Enclosure Selling Terms & Conditions.



Enclosure Systems BCH



- Fabricated from 1.2/1.6 mm stainless steel sheet
- Mounting Plate made up of 2.0mm Galvanised steel
- SS grade 304
- Foamed - in PU gasket
- Box upto BIL - 90405020 is made up of 1.2 mm SS & above of 1.6 MM SS.
- 120 deg door open-able concealed hinge door with cam locking arrangement.

'BCH - SS' (Stainless Steel)

HSN Code : 8538

Type	Size (WxHxD) mm	MOQ Nos.	Cat No.	List Price [₹]
SINGLE DOOR BOX	200X300X150	3	BIL-90203015	4800
SINGLE DOOR BOX	300X300X200	3	BIL-90303020	6650
SINGLE DOOR BOX	400X400X200	3	BIL-90404020	8800
SINGLE DOOR BOX	400X500X200	3	BIL-90405020	9800
SINGLE DOOR BOX	400X600X200	3	BIL-90406020	11240
SINGLE DOOR BOX	500X600X200	3	BIL-90506020	14400
SINGLE DOOR BOX	600X600X200	3	BIL-90606020	15400
SINGLE DOOR BOX	600X800X200	3	BIL-90608020	18300
SINGLE DOOR BOX	500X700X300	3	BIL-90507030	18600
SINGLE DOOR BOX	800X800X300	3	BIL-90808030	25600

MOQ - Minimum order quantity in nos.
Note - SS grade 304

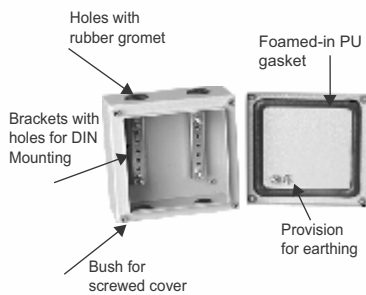


- 43 Different Versions
- Min. Size : 150 X 150 X 80
- Max Size : 800 X 400 X 120
- IP 55/IP66

Terminal Boxes

HSN Code : 8538

Box Size (W x H x D)	IP-55 Range			IP-66 Range	
	MOQ	Cat. No.	List Price [₹]	Cat. No.	List Price [₹]
150x150x80	5	BIL-70000	920	BIL-80000	950
200x150x80	-			BIL-80100	1050
300x150x80	5	BIL-70010	1090	BIL-80010	1210
200x200x80	5	BIL-70020	1040	BIL-80020	1100
300x200x80	5	BIL-70030	1130	BIL-80030	1180
400x200x80	-			BIL-80110	1260
600x200x80	-			BIL-80130	1720
150x150x120	5	BIL-70040	1020	BIL-80040	1090
200x150x120	-			BIL-80150	1120
300x150x120	5	BIL-70050	1210	BIL-80050	1240
200x200x120	5	BIL-70060	1180	BIL-80060	1210
300x200x120	5	BIL-70070	1310	BIL-80070	1340
400x200x120	5	BIL-70080	1480	BIL-80080	1520
300x300x120	5	BIL-70090	1570	BIL-80090	1630
400x150x120	-			BIL-80170	1460
400x300x120	5	BIL-70180	1730	BIL-80180	1950
400x400x120	5	BIL-70190	2050	BIL-80190	2210
500x200x120	5	BIL-70200	1790	BIL-80200	1910
500x300x120	5	BIL-70210	1990	BIL-80210	2100
600x200x120	5	BIL-70220	2000	BIL-80220	2110
600x300x120	5	BIL-70230	2450	BIL-80230	2550
600x400x120	5	BIL-70240	2690	BIL-80240	2780
800x200x120	5	BIL-70250	2830	BIL-80250	2920
800x400x120	5	BIL-70260	3450	BIL-80260	3510



Technical Particulars (TERMINAL BOXES)

- Fabricated from 1.2mm CRCA sheet steel
- Powder coated to shade RAL 7035 Structure finish
- Foamed-in PU gasket
- Provided with screwed cover on top
- IP-55 & 66 Degree of protection
- Brackets provided inside to facilitate DIN rail mounting
- Holes with Gromet provided to facilitate cable entry in IP 55 terminal boxes

Note: Cutout charges will be extra

MOQ-Minimum order quantity in nos.

Enclosure Systems BCH

Techno Modular Enclosures

HSN Code : 8538

Size of Enclosure (W x H x D in mm)	Cat. No.	Enclosure Version*				Plinth		Side Covers (Pair)	
		Ver 001 LP [₹]	Ver 002 LP [₹]	Ver 003 LP [₹]	Ver 004 LP [₹]	Cat. No.	List Price [₹]	Cat. No.	List Price [₹]
600 x 1800 x 400	TME 061804	18000	20050	14300	16500	TPL 061804	1750	TSC 061804	3490
800 x 1800 x 400	TME 081804	21500	23600	16350	18900	TPL 081804	1990	TSC 081804	3490
1000 x 1800 x 400	TME 101804	29600	31900	22950	25100	TPL 101804	2230	TSC 101804	3490
1200 x 1800 x 400	TME 121804	33250	37150	25800	28600	TPL 121804	2450	TSC 121804	3490
600 x 1800 x 500	TME 061805	18800	20700	15250	17150	TPL 061805	1870	TSC 061805	4050
800 x 1800 x 500	TME 081805	21900	24650	17500	19600	TPL 081805	2100	TSC 081805	4050
1000 x 1800 x 500	TME 101805	30400	32700	23950	26400	TPL 101805	2350	TSC 101805	4050
1200 x 1800 x 500	TME 121805	33900	38500	27150	30500	TPL 121805	2550	TSC 121805	4050
800 x 1800 x 600	TME 081806	23350	24500	19000	20800	TPL 081806	2200	TSC 081806	4500
600 x 2000 x 400	TME 062004	19400	21800	14900	17700	TPL 062004	1750	TSC 062004	3750
800 x 2000 x 400	TME 082004	22580	24800	17250	19590	TPL 082004	1990	TSC 082004	3750
1000 x 2000 x 400	TME 102004	32350	34150	25150	26900	TPL 102004	2230	TSC 102004	3750
1200 x 2000 x 400	TME 122004	34750	38400	27800	31500	TPL 122004	2450	TSC 122004	3750
600 x 2000 x 500	TME 062005	20600	22300	16900	19100	TPL 062005	1870	TSC 062005	4400
800 x 2000 x 500	TME 082005	23100	25500	17800	20300	TPL 082005	2100	TSC 082005	4400
1000 x 2000 x 500	TME 102005	32000	35800	25500	28300	TPL 102005	2350	TSC 102005	4400
1200 x 2000 x 500	TME 122005	34990	38500	27500	30500	TPL 122005	2550	TSC 122005	4400
600 x 2000 x 600	TME 062006	20900	22950	17900	19950	TPL 062006	1970	TSC 062006	4900
800 x 2000 x 600	TME 082006	23900	26050	19200	21350	TPL 082006	2200	TSC 082006	4900
1000 x 2000 x 600	TME 102006	32500	37300	25900	30200	TPL 102006	2430	TSC 102006	4900
1200 x 2000 x 600	TME 122006	35680	39550	28900	32600	TPL 122006	2650	TSC 122006	4900
600 x 2000 x 800	TME 062008	21500	23100	17950	20200	TPL 062008	2200	TSC 062008	6300
800 x 2000 x 800	TME 082008	24900	26750	20350	22280	TPL 082008	2430	TSC 082008	6300
1000 x 2000 x 800	TME 102008	35680	38050	27500	30500	TPL 102008	2630	TSC 102008	6300
1200 x 2000 x 800	TME 122008	37500	41600	30800	33900	TPL 122008	2890	TSC 122008	6300
600 x 2200 x 600	TME 062206	23550	25800	18700	22200	TPL 062206	1970	TSC 062206	5670
800 x 2200 x 600	TME 082206	26650	28400	21450	23650	TPL 082206	2200	TSC 082206	5670
1000 x 2200 x 600	TME 102206	36900	39750	30320	33170	TPL 102206	2430	TSC 102206	5670
1200 x 2200 x 600	TME 122206	38350	42800	29800	33300	TPL 122206	2650	TSC 122206	5670
600 x 2200 x 800	TME 062208	25680	27860	19700	22750	TPL 062208	2200	TSC 062208	7370
800 x 2200 x 800	TME 082208	31000	32800	23800	25900	TPL 082208	2430	TSC 082208	7370
1000 x 2200 x 800	TME 102208	39300	42350	31900	34300	TPL 102208	2630	TSC 102208	7370
1200 x 2200 x 800	TME 122208	42500	44900	34800	37150	TPL 122208	2890	TSC 122208	7370

*Baying kit (BIL-14280) Rs. 1180/- is also available for Enclosure Version. For extra accessories, please contact nearest branch office.

MOQ-Minimum order quantity in nos.

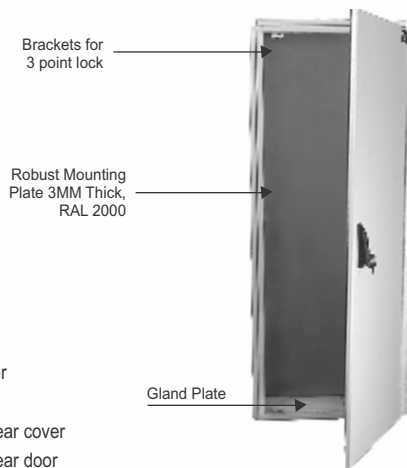
Note : Cutout charges will be extra

Freight charges will be extra at actuals

*List Prices are Ex-works Faridabad. For detail refer Enclosure Selling Terms & Conditions.



Enclosure Systems BCH



Modular Enclosures

- Enclosures
- Minimum size in mm :
600 x 1800 x 400 (W x H x D)
- Maximum size in mm :
1200 x 2200 x 800 (W x H x D)
- IP 54 / IP 55 degree of protection
- Wide range of accessories

Features

- Completely modular in all the three axis
- Powder coated surface (RAL 7035) for excellent finish and durability
- PU Gasket ensuring higher degree of ingress protection
- 3mm mounting plate as a standard
- Manufactured on CNC Turret punch press for higher precision, finish and repeated accuracy
- Ideal for :
 - Special purpose machines
 - Control panels
 - Drives
 - Starter enclosures
 - Accessories for mounting 19" equipment

Enclosure Versions

- 001 - with mounting plate and rear cover
- 002 - with mounting plate and rear door
- 003 - without mounting plate and with rear cover
- 004 - without mounting plate and with rear door

To Order And Calculate List Price

- (a) Choose Cat. No. and LP of Enclosure version from 001, 002, 003 or 004
- (b) Add Cat. No. and LP of Plinth
- (c) Add Cat. No. and LP of Side Covers pair

General Technical Particulars

- IP54/55 degree of protection
- Fabricated from 2/1.6 mm CRCA/GPSP (frame made up of 2.0mm GPSP, doors & covers made up of 1.6 mm CRCA).
- Fully bolted construction
- Mounting Plate with sliding arrangement - standard & Powder coated to RAL-2000
- Modular Plinth (optional) 100mm high fabricated from CRCA
- Cable entry provision is given from Bottom & made in 3-part construction with Galvanized steel [Unpainted]
- Foamed-in PU gasket
- Powder coated to RAL : 7035 structure finish
- Hinge design allows 120 deg. Door opening
- 3 point lock provided as standard
- Door stiffener with provision of drilling holes for wiring harness.
- Side Covers - Pair : consisting of 1no. LHS and 1no. RHS cover
- To calculate limiting dimension of the enclosure, add 44mm to the width to account for Side Covers,
- 22mm to the height for Top Cover & 44mm to the depth on account of Front and Rear door / cover.

Note : upto 800 mm width single door
1000 mm & 1200 mm width double leaf door

*List Prices are Ex-works Faridabad. For detail refer Enclosure Selling Terms & Conditions.

Smartline Modular Enclosure BCH

SmartLine TME

HSN Code : 8538

Size of Enclosure (W x H x D in mm)	Cat. No.	Enclosure Version*				Plinth		Side Covers (Pair)	
		Ver 001 LP [₹]	Ver 002 LP [₹]	Ver 003 LP [₹]	Ver 004 LP [₹]	Cat. No.	List Price [₹]	Cat. No.	List Price [₹]
600 x 1800 x 500	SLE 061805	17500	19800	14200	16350	TPL 061805	1870	SLSC 061805	3650
800 x 1800 x 600	SLE 081806	21800	23400	17900	19900	TPL 081806	2200	SLSC 081806	4050
600 x 2000 x 600	SLE 062006	19500	21800	16700	18700	TPL 062006	1970	SLSC 062006	4420
800 x 2000 x 600	SLE 082006	22350	24750	17950	20290	TPL 082006	2200	SLSC 082006	4420
1200 x 2000 x 600	SLE 122006	33950	37580	27500	30970	TPL122006	2650	SLSC 122006	4420
600 x 2000 x 800	SLE 062008	19950	21950	16800	18950	TPL 062008	2200	SLSC 062008	5680
800 x 2000 x 800	SLE 082008	23650	25400	18950	21150	TPL 082008	2430	SLSC 082008	5680
1200 x 2000 x 800	SLE 122008	34900	39600	29300	32230	TPL 122008	2890	SLSC 122008	5680

Note : Cutout / customization charges will be extra.

*Baying kit (**BIL-14280**) Rs. 1180/- is also available for Enclosure Version. For extra accessories, please contact nearest branch office.

Enclosure Versions

- 001 - With mounting plate and rear cover.
- 002 - With mounting plate and rear door
- 003 - Without mounting plate and with rear cover
- 004 - Without mounting plate and with rear door

To Order and Calculate List Price

- (a) Choose Cat. No. and LP of Enclosure version from 001, 002, 003 or 004
- (b) Add Cat. No. and LP of Plinth
- (c) Add Cat. No. and LP of Side Covers pair

General Technical Particulars

- IP-54 degree of protection
- Fabricated from CRCA/GPSP (frame made up of GPSP, doors & covers made up of CRCA sheet).
- Modular construction
- Mounting plate and cable entry plate made up of Galvanized steel [Unpainted]
- Plinth (optional) 100mm high fabricated from CRCA sheet.
- Cable entry provision is given from Bottom as standard
- Foamed-in PU gasket
- Powder coated to RAL : 7035 structure finish
- Hinge design allows 120 deg. Door opening
- 3 point lock provided as standard
- Door stiffener with provision of drilling holes for wiring harness.
- Side Covers - Pair: consisting of 1no. LHS and 1no. RHS cover
- To calculate limiting dimension of the enclosure, add 44mm to the width to account for Side Covers, 22mm to the height for Top Cover & 44mm to the depth on account of Front and Rear door / cover.

Note : Upto 800 mm width single door. 1000 mm & 1200 mm width double leaf door

*List Prices are Ex-works Faridabad. For detail refer Enclosure Selling Terms & Conditions.



Semi-Modular Floor Standing Enclosure..... BCH

HSN Code : 8538

Size of Enclosure (W x H x D in mm)	Cat. No.	List Price [₹]	Plinth		Side Covers (Pair)	
			Cat. No.	List Price [₹]	Cat. No.	List Price [₹]
600X1800X400	FCS 061804	On Request	FCS-PL 061804	On Request	FCS-SC 061804	On Request
600X1800X500	FCS 061805		FCS-PL 061805		FCS-SC 061805	
800X1800X600	FCS 081806		FCS-PL 081806		FCS-SC 081806	
600X2000X600	FCS 062006		FCS-PL 062006		FCS-SC 062006	
800X2000X500	FCS 082005		FCS-PL 082005		FCS-SC 082005	
800X2000X600	FCS 082006		FCS-PL 082006		FCS-SC 082006	
800X2000X800	FCS 082008		FCS-PL 082008		FCS-SC 082008	
1000X2000X600	FCS 102006		FCS-PL 102006		FCS-SC 102006	
1000X2000X800	FCS 102008		FCS-PL 102008		FCS-SC 102008	
1200X2000X500	FCS 122005		FCS-PL 122005		FCS-SC 122005	
1200X2000X600	FCS122006		FCS-PL122006		FCS-SC122006	
1200X2000X800	FCS 122008		FCS-PL 122008		FCS-SC 122008	

Note : Sizes are available in all FOUR version like TME.

Enclosure Versions

- Ver-001 - With mounting plate and rear cover.
- Ver-002 - With mounting plate and rear door
- Ver-003 - Without mounting plate and with rear cover
- Ver-004 - Without mounting plate and with rear door

To Order and Calculate List Price

- (a) Choose Cat. No. and LP of Enclosure version from 001, 002, 003 or 004
- (b) Add Cat. No. and LP of Plinth
- (c) Add Cat. No. and LP of Side Covers pair

Note:

- Cutout / customization charges will be extra.
- Baying Kit (BIL-FCS-14280) LP Rs. 1000/- is also available for Enclosure Versions.
- For extra accessories, Please contact nearest branch office.

Technical Particulars (Semi-Modular Enclosure)

- Unique symmetric front and rear welded frame with modular depth member which resultant fastest assembly and uniformity.
- IP-55 Degree of Protection
- Front and Rear Frame welded & depth members are modular
- Fabricated from 2.0mm/1.6mm CRCA
- Mounting plate made of 2mm thick Galvanized sheet
- Cable entry from bottom of panel as standard
- Powder coated to RAL-7035 Structure finish
- Limiting dimension of the enclosure are same as per sizes given
- Adjustable mounting plate depth wise
- Foamed-in PU gasket
- 3 point lock provided as standard
- Door stiffener with provision of drilling holes for wiring harness.
- Side Covers - Flush Type Side cover Pair consisting of 1no LHS and 1no RHS cover



*List Prices are Ex-works Faridabad. For detail refer Enclosure Selling Terms & Conditions.

TEOS Plus Enclosure BCH-TEKPAN

TEOS Plus Enclosure

HSN Code : 8538

Size of Enclosure (W x H x D in mm)	Cat. No.	List Price [₹]
600 x 1800 x 500	TEOS061805	On Request
800 x 1800 x 600	TEOS081806	
600 x 2000 x 600	TEOS062006	
800 x 2000 x 600	TEOS082006	
800 x 2000 x 800	TEOS082008	
1200 x 2000 x 600	TEOS122006	
1000 x 2000 x 800	TEOS102008	
1200 x 2000 x 800	TEOS122008	

Front Door, Rear Door, Rear Cover & Mounting plate shall be supplied as per requirement.



Plinth Corner

HSN Code : 8538

Description	Cat. No.	List Price [₹]
PLINTH CORNER PART H100mm	708.100	On Request

Supply included:- 4 pcs 100mm height corner & mounting accessories.

Plinth Front Cover

HSN Code : 8538

Description	Cat. No.	List Price [₹]	
PLINTH FRONT PROFILE :600	709.160	On Request	
PLINTH FRONT PROFILE :800	709.180		
PLINTH FRONT PROFILE :1000	709.100		
PLINTH FRONT PROFILE :1200	709.120		

Supply included:- 2 pcs 100mm height front cover & mounting accessories.

Plinth Side Cover

HSN Code : 8538

Description	Cat. No.	List Price [₹]	
PLINTH SIDE PROFILE :500	710.150	On Request	
PLINTH SIDE PROFILE :600	710.160		
PLINTH SIDE PROFILE :800	710.180		

Supply included:- 2 pcs 100mm height side cover & mounting accessories.

Side Cover

HSN Code : 8538

Description	Cat. No.	List Price [₹]	
Pair of side cover 500*1800	706.185	On Request	
Pair of side cover 600*1800	706.186		
Pair of side cover 600*2000	706.206		
Pair of side cover 800*1800	706.188		
Pair of side cover 800*2000	706.208		

Supply included:- 2 pcs side cover & mounting accessories

Technical Particulars (TEOS Plus Enclosure)

- Multifold (12-Fold) structure with 100% Modularity.
- IP-65 Degree of Protection.
- SEISMIC Tested for Zone-4 and UL Certified.
- Easy Assembly & Logistic advantages.
- 4-Point lock with Swing Handle.
- Powder coated to RAL: 7035 Structure Finish.
- Limiting dimension of the enclosure are same as per given dimension.

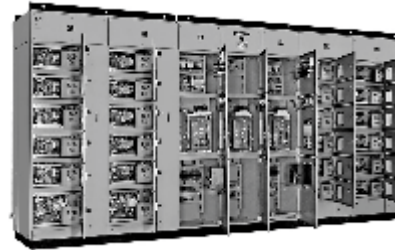
Note :

- Upto 800 mm width single door. 1000 mm & 1200 mm width double leaf door
- Cutout / customization charges will be extra
- For extra accessories, please contact nearest branch office.

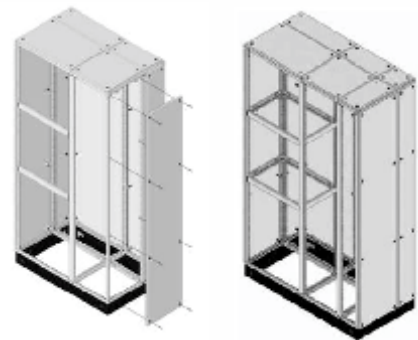
*List Prices are Ex-works Faridabad. For detail refer Enclosure Selling Terms & Conditions.



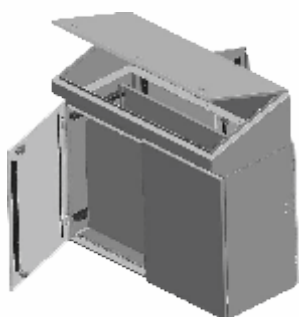
Highlights of **BCH** Compartmentalized **MCC / PCC / PMCC** Solution (Fixed & Drawed Type)



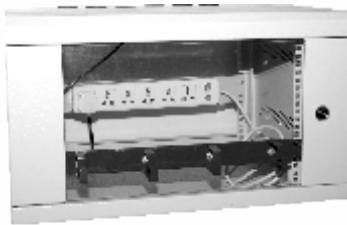
- 100% Modular Structure; can be dispatched in flat pack.
- Flexible compartmentalized -up to From 4.
- IP 54 degree of protection with polyurethane foam gasket.
- Compartment size available from 200mm height & multiplies of 100mm.
- Additional accessories like Cable support, Busbar support, Limit Switch and Lamp brackets are available.
- Adjustable mounting plates (Depth wise at the pitch of 25mm).
- Panel can be expanded in all 3 dimensions and bayed together by using Baying Kit.
- All Structure members (Corner & Cross bar) having M6 extrude hole at 25mm intervals, No need of any Captive hardware.
- Standard Module dimension for Drawout Enclosures.
 - ▷ Single Front :- 900(W) x 2400(H) x 600(D)
 - ▷ Double Front :- 900(W) x 2400(H) x 1200(D)
- Draw-out feeder available from 200mm height (2SU) to 800mm height (8SU).
- Colours :- RAL-7035 (Structure finish) for structure, doors, covers & internal parts RAL-2000 (smooth finish) for Mounting plates, Ral-9000 (Smooth Finish) for Plinth .
- Sheet thickness 2.0mm GPSP for structure, 2.0mm CRCA for Mounting Plate & Mounting rail, 1.6mm CRCA for Doors & Covers, 1.2mm CRCA for Separation plates.



BCH Control Desk



Enclosure Systems *technoRACKS* BCH



Key Attributes:

- Aesthetic & robust construction
- Mounting Fan /s in top doesn't take usable "U" space.
- Special type of Wallmounting hardware.
- Provision for earthing available in the cabinets.
- Highly corrosion resistant in nature.
- Power coated to shade RAL : 7035 structure finish.

19" Wall Mount Racks

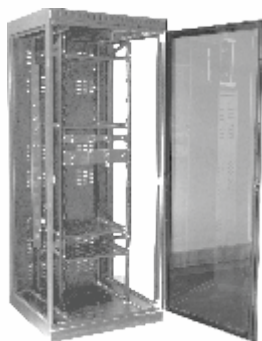
HSN Code : 8538

Dimensions (H x W x D) mm	MOQ Nos.	Cat. No.	List Price [₹]
6UX550X400	1	BIL-W-6-5504	3660
9UX550X400	1	BIL-W-9-5504	4410
6UX550X500	1	BIL-W-6-5505	4040
9UX550X500	1	BIL-W-9-5505	4700
12UX550X500	1	BIL-W-12-5505	5230
15UX550X500	1	BIL-W-15-5505	6150

MOQ-Minimum order quantity in nos.

Standard Configuration: Wallmount cabinet, 2-Pairs of 19" rail.

Notes : Accessories viz. Shelves, Fans, power strips, cable managers captive H/W & wall mounting hardware etc. will be extra as per the accessories list furnished in the price list.
Wall mount racks price do not include freight & will be extra at actuals



Key Attributes:

- Floor mounting robust design.
- Lockable & removable side panels.
- 2-pairs of adjustable 19" rails.
- Front door with toughened glass & perforation.
- High load bearing capacity.
- Rear vented door.
- Provision for fan mounting in top which doesn't take usable "U" Space.
- Superior cable management facility in extra wide racks.
- 4-integrated vertical cable managers are default design of 800mm wide racks.
- Rear space saving split door with 3-point secure locking in extra wide (800mm) racks.
- Power coated to shade RAL : 7035 structure finish.

19" Networking Racks

HSN Code : 8538

Dimensions (H x W x D) mm	MOQ Nos.	Cat. No.	List Price [₹]
24U X 600 X 600	1	BIL-N-062406	20470
24U X 600 X 800	1	BIL-N-062408	22630
24U X 800 X 600	1	BIL-N-082406	25650
24U X 800 X 800	1	BIL-N-082408	28030
30U X 600 X 600	1	BIL-N-063006	22630
30U X 600 X 800	1	BIL-N-063008	24790
30U X 800 X 600	1	BIL-N-083006	28030
30U X 800 X 800	1	BIL-N-083008	30720
36U X 600 X 600	1	BIL-N-063606	24790
36U X 600 X 800	1	BIL-N-063608	27490
36U X 800 X 600	1	BIL-N-083606	30730
36U X 800 X 800	1	BIL-N-083608	33370
42U X 600 X 600	1	BIL-N-064206	28570
42U X 600 X 800	1	BIL-N-064208	30620
42U X 800 X 600	1	BIL-N-084206	33630
42U X 800 X 800	1	BIL-N-084208	37180
45U X 600 X 600	1	BIL-N-064506	32880
45U X 600 X 800	1	BIL-N-064508	34500
45U X 800 X 600	1	BIL-N-084506	36100
45U X 800 X 800	1	BIL-N-084508	39340

MOQ-Minimum order quantity in nos.

Notes : 1) Networking racks price do not include freight & this will be extra at actuals.

For more details visit : www.bchindia.com/technorack

*List Prices are Ex-works Faridabad. For detail refer Enclosure Selling Terms & Conditions.

Key Attributes:

- Floor mounting robust design.
- Lockable & removable side panels.
- 2-pairs of adjustable 19" rails.
- Front door with toughened glass & perforation.
- High load bearing capacity.
- Rear vented door.
- Provision for fan mounting in top which doesn't take usable "U" Space.
- Superior cable management facility in extra wide racks.
- 4-integrated vertical cable managers are default design of 800mm wide racks.
- Rear space saving split door with 3-point secure locking
- locking in extra wide (800mm) racks.
- Power coated to shade RAL : 7035 structure finish.



Key Attributes:

- Includes 1-Pair of 21" rails.
- Integrated side panels.
- Grouting arrangements along with grouting bolts as std. BOM
- Provision for power & detachable Cable entry/exit in top & bottom.
- Power coated to shade RAL : 7035 structure finish.



Key Attributes:

- 1-Pair of vertical cable manager is default design.
- Surface pretreated and advance powder coated
- Grouting bolts as std. BOM.
- Power coated to shade RAL : 7035 structure finish.

19" Server Racks

HSN Code : 8538

Dimensions (H x W x D) mm	MOQ Nos.	Cat. No.	List Price [₹]
24U X 600 X 900	1	BIL-S-062409	23120
24U X 600 X 1000	1	BIL-S-062410	24570
30U X 600 X 900	1	BIL-S-063009	26140
30U X 600 X 1000	1	BIL-S-063010	27160
36U X 600 X 900	1	BIL-S-063609	28670
36U X 600 X 1000	1	BIL-S-063610	30190
42U X 600 X 900	1	BIL-S-064209	32230
42U X 600 X 1000	1	BIL-S-064210	34280
42U X 800 X 1000	1	BIL-S-084210	39450
45U X 600 X 900	1	BIL-S-064509	37250
45U X 600 X 1000	1	BIL-S-064510	39410

MOQ - Minimum order quantity in nos.

Notes: Server racks price do not include freight & this will be extra at actuals.

STANDARD CONFIGURATION: Basic frame, Top & bottom, Front Glass door with perforation, Rear vented door, Lockable & detachable side panels, 2-Pairs of 19" rails with depth members.

ETSI Racks

HSN Code : 8538

Dimensions (H x W x D) mm	MOQ Nos.	Cat. No.	List Price [₹]
2200 X 600 x 300	1	ITE-062203	8300
2200 X 600 x 600	1	ITE-062206	13370

MOQ - Minimum order quantity in nos.

Notes: Above ETSI configuration do not include front & rear door and covers.

All other accessories will be extra & will be furnished on request.
The prices mentioned above do not include freight.

19" Open Racks

HSN Code : 8538

Dimensions (H x W) mm	MOQ Nos.	Cat. No.	List Price [₹]
36U X 600	1	ITE-OF-0636	5400
45U X 600	1	ITE-OF-0645	6360

MOQ - Minimum order quantity in nos.

Notes: 1) Above Open Rack configuration does not include Shelves, Doors and Covers. All other accessories prices will be extra and will be furnished on request.

2) The Prices above do not include Freight and this will be extra at actuals.

For more details, visit : www.bchindia.com/technorack

*List Prices are Ex-works Faridabad. For detail refer Enclosure Selling Terms & Conditions.

Enclosure Systems *technoRACKS* BCH

Accessories for 19" Racks

Fixed Shelf/Stationary Shelf

- Compatible to keep monitor, servers, non 19" Networking & allied equipments.

Key-Board Tray

- Sliding & rotatory type.

Canteliver Shelf

- It can accomodate light weighted networking & allied equipments like modem, routers etc.

Equipment Support Angle

- "L" type angles. Useful to keep non 19" heavy duty equipment in rack mounting position.

Sliding Shelf

- Useful to keep servers, networking & allied equipment which are required to slide out for operational & other purpose.

Fans/Fan Tray

- 220V 90 CFM Capacity. Can be mounted at the top either directly or through Fan housing unit (Fan Tray)

6-Point 5A Hor. Power Strip

- All universal type socket along with on/off switch with fuse & indicator. Internal strips are made up of Berellium copper that has high rate of heat & mechanical tolerance.
- Other 5A or 5/15A Power strips have Indian style (Anchor) Sockets with on/off switch/MCB.

Castors

- 1-Set includes 4Nos. of castors, 2Nos. with foot operated brake & remaining 2 are free.

Levelling Feet

- 1-Set includes 4Nos. of Levelling Feet.

Stability Plate

- It Prevents the racks from toppling while taking out heavy duty servers.

Shelves

HSN Code : 8538

Description	Cat No.	List Price [₹]
Fixed Shelf (600mmD)	BIL-A-FS-L-06	930
Fixed Shelf (800mmD)	BIL-A-FS-L-08	1440
Fixed Shelf (900mmD)	BIL-A-FS-L-09	1600
Fixed Shelf (1000mmD)	BIL-A-FS-L-10	1720
Modem Tray	BIL-A-MD	890
Key board tray (Sliding & Rotatory)	BIL-A-KB-06	2750
Canteliver Shelf (1U)	BIL-A-CS-1	550
Canteliver Shelf (2U)	BIL-A-CS-2	830
Equipment Support Angle (600mmD)	BIL-A-ESA-06	340
Equipment Support Angle (800mmD)	BIL-A-ESA-08	390
Equipment Support Angle (900mmD)	BIL-A-ESA-09	490
Equipment Support Angle (1000mmD)	BIL-A-ESA-10	560
Sliding Shelf (900mmD)	BIL-A-SS-09	2750
Sliding Shelf (1000mmD)	BIL-A-SS-10	2860

Thermal Management

HSN Code : 8538

Description	Cat No.	List Price [₹]
1-Fan (Direct mounted)	BIL-A-SF	930
Fan-tray with 2-Fans (FHU)	BIL-A-FHU-2FANS	1990
Fan-tray with 4-Fans (FHU)	BIL-A-FHU-4FANS	3470

Cable Management

HSN Code : 8538

Description	Cat No.	List Price [₹]
Horizontal Cable Manager (1U)	BIL-A-HCM-1U	220
Horizontal Cable Manager (2U)	BIL-A-HCM-2U	280
Vertical Cable Manager (24U)	BIL-A-VCM-24U	340
Vertical Cable Manager (30U)	BIL-A-VCM-30U	440
Vertical Cable Manager (36U)	BIL-A-VCM-36U	500
Vertical Cable Manager (42U)	BIL-A-VCM-42U	550
Vertical Cable Manager (45U)	BIL-A-VCM-45U	610

Power Management

HSN Code : 8538

Description	Cat No.	List Price [₹]
6-Point 5Amp Horizontal Power Strip (19")	BIL-A-HPS-5AMP	900
5-Point 5/15Amp Horizontal Power Strip (19")	BIL-A-HPS-15AMP	1210
12-Point 5Amp Vertical Power Strip	BIL-A-12VPS-5AMP	1770
10-Point 5/15Amp Vertical Power Strip	BIL-A-10VPS-15AMP	2040
Earth continuity Kit (Earthing Kit)	BIL-A-ECT	690

Stability Management

HSN Code : 8538

Description	Cat No.	List Price [₹]
Castors (1-Set) Heavy Duty	BIL-A-CAS-HD	3320
Castors (1-Set) Light Duty	BIL-A-CAS	2650
Levelling Feet (1-Set)	BIL-A-LF	450
Stability Plate	BIL-A-SP	1670

Miscellaneous

HSN Code : 8538

Description	Cat No.	List Price [₹]
BAYING KIT	BIL-A-BK	320
BLANKING PANEL (1U)	BIL-A-BP-1U	150
BLANKING PANEL (2U)	BIL-A-BP-2U	200
BLANKING PANEL (3U)	BIL-A-BP-3U	260
BLANKING PANEL (4U)	BIL-A-BP-4U	310
BLANKING PANEL (5U)	BIL-A-BP-5U	350
Captive H/w (set of 10)	BIL-A-Captive-M6	150
Wallmounting H/w (set of 4)	BIL-A-wallmounting W	160

Notes : Packing & forwarding will be extra if accessories are ordered separately.

*List Prices are Ex-works Faridabad. For detail refer Enclosure Selling Terms & Conditions.

TERMS & CONDITIONS

- The prices given in this list are effective as on date and are subject to change without notice.
- Prices are Ex-works Faridabad and inclusive of Packing & forwarding.
- List price does not include GST and the same will be charged extra as applicable. For all other product ranges freight will be charged extra.
- Freight is inclusive (Within India) for Bhartia Boxes, Stainless Steel Boxes and Terminal Boxes range.
- The duties, taxes and other statutory levies are based on rates prevailing at the time of billing. Any subsequent revision of those rates having retrospective effective shall be to customer's account.
- In case where any GST exemption has been claimed, the purchaser is responsible for providing the necessary GST exemption form within the specified period, failing which the purchaser would be liable for the payment of full GST plus applicable interest and penalties
- **Alteration** made after receipt and confirmation of order are subject to price and delivery revision and any other expenses or levies
- **Jurisdiction** : The courts at Delhi only will have jurisdiction to settle all the dispute raised

a strong commitment
to serve better
always ...



**Switchgear | Controlgear | Enclosures | Motor Starters & Submersible Pump Panels |
Brakes and Crane Controls | MCC | PCC | Customised Solutions | Automation |
Wires & Cables | Motors | Reactive Power Management**



BCH ELECTRIC LIMITED

- Power Control Products
- Starters & Submersible Pump Starters
- Industrial Enclosures
- Industrial Products
- Wires & Cables
- Motor Control Products
- Customised Solution
- Automation



BCH ELECTRIC LIMITED

Visit us at : www.bchindia.com

Corporate Office : 1105, New Delhi House, 27, Barakhamba Road, New Delhi-110 001 Tel. : 91-11-23316029/3610/6539/43673100 Fax : 91-11-23715247

CIN : U31103WB1965PLC026427, Customercare No. 1800-103-9262, E-mail : marketing@bchindia.com

Registered Office : Block 1E, 216, Acharya Jagadish Chandra Bose Road, Kolkata - 700 017

Works 1 : 20/4, Mathura Road, Faridabad-121 006 (Haryana) Tel. : 0129-4063000/4293000 Fax : 0129-2304016

Works 2 : 64-68, Sector-7, IIE, Pant Nagar, Rudrapur, Udham Singh Nagar - 263 153 (Uttarakhand) Tel. : 05944-250214/16 Fax : 05944-250215

Sales Offices :

Ahmedabad

103, Aaron,
Nr. SBI Laghuudyug branch,
Behind Sakar-1
Gandhigram Railway station,
Ellis bridge, Ahmedabad - 380006
Tel. : 079-26589719
E-mail : ahmedabad@bchindia.com

Bangalore

2nd Floor, 130/5,
K.H. Road (Double road),
Bangalore - 560 027
Tel. : 080-22273478/41144878/
41144879
Fax : 080-22236759
E-mail : bangalore@bchindia.com

Bhubaneswar

Mallick Commercial
Complex Plot No.: A/69, unit - 3
Bhubaneswar - 751 001
Tel. : 0674-2380988
E-mail : bhubaneswar@bchindia.com

Chandigarh (Panchkula)

Sco -129, Iind Floor,
Mdc, Sector-5 Panchkula,
Haryana-134 109
Tel. : 0172-5078957 / 5048905
Fax : 0172-5049905
E-mail : chandigarh@bchindia.com

Chennai

Flat No. 3A, 3rd Floor,
Sree Apartments,
No.508, TTK Road,
Alwarpet, Chennai 600 018
Tel. : 044-24337046, 24337047
Fax : 044-24337047
E-mail : chennai@bchindia.com

Coimbatore

87, Dr. Nanjappa Road,
Coimbatore - 641 018
Tel. : 0422-2305311
Fax : 0422-2302599
E-mail : coimbatore@bchindia.com

Dehradun

8, Co-operative Industrial Estate,
Patel Nagar, Dehradun-248001
E-mail : dehradun@bchindia.com

Faridabad

20/4, Mathura Road,
Faridabad - 121 006 (Haryana)
Telfax : 0129-4293009
E-mail : faridabad@bchindia.com

Hyderabad

1-8-303/48/13/102, Arya One,
2nd Floor, P. G. Road,
Secunderabad - 500 003
Tel. : 040-66206263/27890306
Fax : 040-66207273
E-mail : hyderabad@bchindia.com

Indore

330-331, Indraprastha Tower,
3rd Floor, 6, M.G. Road,
Indore - 452 001
Tel. : 0731-2510011
Fax : 0731-2510012
E-mail : indore@bchindia.com

Jaipur

25, Hathroi, Gopalbari,
Jaipur - 302 001
Tel. : 0141-2363521
Fax : 0141-2363521
E-mail : jaipur@bchindia.com

Jamshedpur

3rd Floor, Aastha Trade Centre,
'Q' Road, Bistupur,
Jamshedpur - 831 001
Tel. : 0657-2321097/2321481
E-mail : jamshedpur@bchindia.com

Kolkata

Block 1E, 216,
Acharya Jagadish Chandra Bose Road,
Kolkata - 700 017
Tel. : 033-22871728
E-mail : kolkata@bchindia.com

Lucknow

Madan Plaza, 3rd Floor,
14, Station Road,
Lucknow - 226 001
Tel. : 0522-4025597/4025997
Fax : 0522-4025697
E-mail : lucknow@bchindia.com

Ludhiana

S.C.O.-18, 2nd Floor,
Feroze Gandhi Market,
Ludhiana - 140 001
Tel. : 0161-5021807/5022808
Fax : 0161-5021807
E-mail : ludhiana@bchindia.com

Mumbai

A-151, Mittal Tower,
Nariman Point,
Mumbai - 400 021
Tel. : 022-22822947/22850162
Fax : 022-22822858
E-mail : mumbai@bchindia.com

Nagpur

Flat No. T/12, 3rd Floor
Baldeo Apartment,
Behind Railway Station, Bajerla
Nagpur (M.S.) - 440018
E-mail : nagpur@bchindia.com

New Delhi

801, Akash Deep Building,
26A, Barakhamba Road,
New Delhi - 110 001
Tel. : 011-23313878/66307065
Fax : 011-23739230
E-mail : delhi@bchindia.com

Pune

8, Sarosh Bhavan,
16-B/1, Dr. Ambedkar Road,
Pune - 411 001
Tel. : 020-26052590
Telefax : 020-26135224
E-mail : pune@bchindia.com

Raipur

2nd Floor, Building No. B-234,
Indira Gandhi Vyavasayik Parisar,
Pandri, Raipur - 492 004
Tel. : 0771-4020213
Fax : 0771-2582680
E-mail : raipur@bchindia.com

Trichy

2B, Kannagi Street,
Ayyappa Nagar, K.K.Nagar
Trichy - 620 021, Tamilnadu
Tel. : 0431-4040497
E-mail : trichy@bchindia.com

Vadodara

301, Third Floor, "Florence Classic",
10, Ashapuri Co-Op. Hsq. Soc. Ltd., Opp. VUDA Housing,
Near Cow Circle, Akota, Vadodara - 390 020
Tel. : 0265-2345068/2345069
Telefax : 0265-2345068,
E-mail : vadodara@bchindia.com

Other Branch Locations

Bhubaneswar : bhubaneswar@bchindia.com, **Cochin :** cochin@bchindia.com, **Gurgaon :** gurgaon@bchindia.com, **Guwahati :** guwahati@bchindia.com, **Hospet :** hospet@bchindia.com,
Hubli : hubli@bchindia.com, **Madurai :** madurai@bchindia.com, **Vishakapatnam :** vizag@bchindia.com, **Surat :** surat@bchindia.com

Resident Engineer Locations

Baddi	Gurgaon	Madurai	Rajahmundry
Bardhaman	Haridwar	Muzaffarnagar	Salem
Bhilai	Hubli	Nagpur	Surat
Bhubaneswar	Hospet	Nashik	Udaipur
Cochin	Jodhpur	Patna	Vapi
Dehradun	Kakinada	Puducherry	Vishakhapatnam
Durgapur	Kota	Rajkot	Warangal

Since product improvement is a continuous process, the data furnished in this brochure may undergo revision without prior notice.