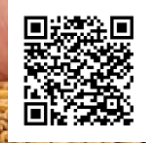




PRICE LIST

Effective : 22nd May 2024

Motor Starters
Submersible Pump Starters



BCH

**BCH
ELECTRIC
LIMITED**

Modern facilities at Faridabad & Rudrapur



Our Strengths

- ◆ State-of-the-art product development and R&D
- ◆ Modern manufacturing facilities
- ◆ Tool room with latest facilities
- ◆ Serving customers for five decades
- ◆ Presence in ~50 locations
- ◆ 650 channel partners
- ◆ ISO 14001:2015 and ISO 9001:2015 certified company

Core Values

- ◆ Integrity
- ◆ Nurturing People
- ◆ Commitment to Customers
- ◆ Striving for Excellence
- ◆ Long Term Thinking

Quality Policy

We as a member of BCH Electric Limited manufacturer of Low Voltage Switchgear & Controlgear products, are fully committed to provide Quality products and service in compliance with applicable Statutory and Regulatory requirements, to meet or exceed the customer need and expectations through -

- ◆ Continual improvement
- ◆ Involvement of employees
- ◆ Setting Quality objectives
- ◆ Training and development of employees

Health & Safety Policy

We as a member of BCH Electric Limited manufacturer of Low Voltage Switchgear & Controlgear products, are fully committed to conduct Business in compliance to applicable Health & Safety legislation and regulation.

We shall continually improve through -

- ◆ Provide Safe & Healthy working conditions for the prevention of work related injury and ill health.
- ◆ Develop & maintain the Health & Safety objectives & targets and conduct health & safety programs for achieving the objectives and target.
- ◆ The prevention of accidents through the identification, assessment and elimination of workplace hazards and the promotion of health & safety awareness among its employees and contractors.
- ◆ Encourage employee's participation and consultation in matters affecting the health, safety and well being of our people and seek suggestions from our employees of ways in which health, safety & well being can be furthered.

The Health & safety policy is publicly available on request.

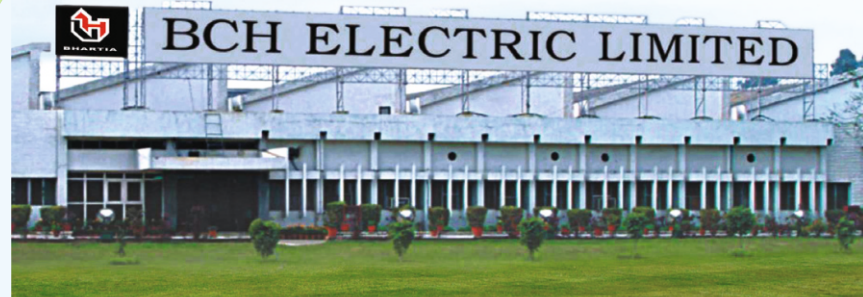
Environmental Policy

We as a member of BCH Electric Limited manufacturer of Low Voltage Switchgear & Controlgear products, are fully committed to conduct Business in compliance to applicable Environmental legislation and regulation.

We shall continually improve through -

- ◆ Provide a framework for setting and reviewing environmental objectives and targets.
- ◆ Regularly review the impact of our activities on environment and strive to reduce the pollution/waste.
- ◆ Involve employees in our environmental program and provide necessary training to enable them to discharge their responsibilities towards environment management.
- ◆ Sustain the program of continual improvement in environment in environmental performance incorporating suitable metrics and monitoring.

The Environment policy is publicly available on request.



www.bchindia.com



BCH

Motor Starters & Submersible Pump Starters

Motor Starters 01-08

- | | Page No. |
|---|----------|
| ■ Shakti - DOL (Shakti WP & Shakti) & Auto DOL Starters | 02 |
| ■ Shakti - Semi & Fully Automatic Star Delta Starters | 03 |
| ■ Citation DOL, Citation P - DOL & Auto DOL New | 04 |
| ■ Citation - SASD, FASD, Higher HP FASD Starters | 05 |
| ■ BK1 DOL & SASD Starters & Spares New | 06 |
| ■ FASD with EOCR, Industrial DOL & Reversing DOL | 07 |
| ■ Mini Manual DOL 1Ph & 3Ph, DOL-1Ph & Manual SD Starter New | 08 |

Submersible Pump Starters 09-15

- | | |
|---|----|
| ■ 3-Ph SPS - Citation - DOL & SD and Shakti - DOL New | 10 |
| ■ 3-Ph SPS - Citation P - DOL & SD (Standard & Premium) | 11 |
| ■ 3-Ph SPS - Citation P - SD (Range Extension) New | 11 |
| ■ 3-Ph SPS - Shakti P - DOL, 1-Ph DOL Starter & SPP Pro | 12 |
| ■ 1-Ph SPS (with CPG Contactor) | 13 |
| ■ 1-Ph SPS - Alfa Model & Dry Run Protection Panel New | 14 |
| ■ 1-Ph SPS - CPD Model & Mini Manual | 15 |

New Oil Immersed Starters & Spares 16

- | | |
|--|----|
| ■ Oil Immersed DOL & Star Delta Starters (SASD & FASD) | 16 |
|--|----|

Others 17-21

- | | |
|--|----|
| ■ Contactors - (2P CPG, 4P NHD & 1 Aux + 3P) & Citation Series | 17 |
| ■ Overload Relays - Citation 3P, WP 3P & 2P | 18 |
| ■ Spares for Motor Starters & Panels | 19 |
| ■ Spare Contact Kits, Coils & Carrier for Motor Starters | 20 |
| ■ Spares for P series SPS, Dry Run SPS, Dual Meter & FR OLR | 20 |
| ■ Coil Band Master Table | 21 |

MCB / MCCB 22

Wires & Cables 23





Shakti DOL & Star Delta Starters

- DOL & Star Delta upto 24 A relay range
- Heavy duty Shakti Contactor
- Wide Band coil voltages (190-400V, 230-420V, 220-240V, 380-415V)
- Encapsulated & Hermetically sealed coil
- Automatic star delta with electronic timer for reliable changeover from star to delta
- Selection of manual & auto resetting of overload relay



Citation DOL & Star Delta Starters

- DOL upto 40 HP
- Semi Automatic upto 40 HP
- Fully Automatic upto 375 HP
- Heavy Duty NHD & Citation Contactor
- Wide Band Coil Voltage (230-360V, 260-400V, 380-415V)
- Automatic Star Delta with Pneumatic Time for Reliable Changeover from Star to Delta
- Selection of Manual & Auto Resetting of Overload Relay



Shakti & Citation P Auto DOL Starters

- Shakti range available upto 24 A overload relay
- Citation P range available upto 40 A overload relay
- Auto start with on delay options:- 5 sec or 5 min or 0.5 sec to 5 min
- Mode of operation:- Auto/ Manual/ Manual SPP with selector on enclosure switch or SPP with inbuilt selector switch
- Protection against phase reversal, phase imbalance & single phasing



BK1 DOL & Semi Automatic Star Delta Starters

- Range: DOL upto 7.5 H.P
- Range: Star Delta upto 15 H.P
- Wide Band Coil 250-400 V AC & 200-400 VAC



1-Phase DOL Starter

- Starter With 2 Pole CPGN Contactor and 2 Pole Overload Relay
- Encapsulated & Hermetically Sealed Coil
- Selection of Manual & Auto Resetting of Overload Relay
- Power Coated Deep Drwan Sheet Steel Enclosure for Excellent Finish & Durability



Mini Manual Starters

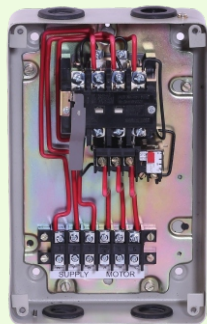
- Range Available upto 10 HP (3PH) & upto 3HP (1PH)
- Flush & Base Mounting Version Available
- Trips Automatically in Low Voltage Conditions (with UV Coil)
- Prevents Motor From Restarting When Powder Comes Back

Shakti WP DOL Starter (190-400V AC Coil)

HSN CODE : 8536



Cat. No.	Overload Relay Range (A)	Contactor Type	Contactor Rating (AC-3)	MRP [₹]	Cat. No. (Open Execution)	MRP [₹]	
SAWPGZA	2.4 - 3.8	Shakti	12 A	3155	-	-	
SAWPHZA	3.8 - 6.0						
SAWPJZA	6.0 - 9.3						
SAWPGZ	2.4 - 3.8		20 A	3195	3145	SAWPGZI	
SAWPHZ	3.8 - 6.0					SAWPHZI	
SAWPJZ	6.0 - 9.3					SAWPJZI	
SAWPKZ	8.9 - 13.5					SAWPKZI	
SAWPLZ	13.2 - 20.0				3365	SAWPLZI	3345
SAWPMZ	17.4 - 24.0				3530	SAWPMZI	3515



Shakti WP DOL Starter (Big Enclosure + TB)

HSN CODE : 8536

Cat. No.	Overload Relay Range (A)	Contactor Type	Contactor Rating (AC-3)	MRP [₹]
SAWPKZ-BT	8.9 - 13.5	Shakti	20 A	4240
SAWPLZ-BT	13.2 - 20.0			4425
SAWPMZ-BT	17.4 - 24.0			4660

Shakti DOL Starter (190-400V AC Coil)

HSN CODE : 8536



Cat. No.	Overload Relay Range (A)	Contactor Type	Contactor Rating (AC-3)	MRP [₹]	Cat. No. (Open Execution)	MRP [₹]
SAGZ	2.4 - 3.8	Shakti	20 A	3410	SAGZI	3355
SAHZ	3.8 - 6.0				SAHZI	
SAJZ	6.0 - 9.3				SAJZI	
SAKZ	8.9 - 13.5				SAKZI	
SALZ	13.2 - 20.0			3715	SALZI	3665
SAMZ	17.4 - 24.0			3865	SAMZI	3810

Shakti Auto-Start DOL Starter (With 5-Sec Delay Auto Switch)

3 Position Selection (Manual - Manual SPP - Auto)

HSN CODE : 8536



Cat. No.	Overload Relay Range (A)	Contactor Type	Contactor Rating (AC-3)	MRP [₹]
ASXGZ	2.4 - 3.8	Shakti	20 A	5775
ASXHZ	3.8 - 6.0			
ASXJZ	6.0 - 9.3			
ASXKZ	8.9 - 13.5			
ASXLZ	13.2 - 20.0			6060
ASXMZ	17.4 - 24.0			6410

For other Coil Voltages, kindly refer 'Coil Voltage Master Table' at page 21

Shakti Semi Automatic Star Delta Starter with 260-400V AC Coil

HSN CODE : 8536

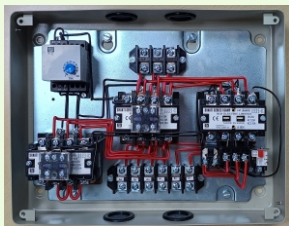


Cat. No.	Overload Relay Range (A)	Contactor Type	Contactor Rating (AC-3)	MRP [₹]
SASSGLEG	2.4 - 3.8	Shakti	16 A	11520
SASSHLEG	3.8 - 6.0			
SASSJLEG	6.0 - 9.3			
SASSKLEG	8.9 - 13.5			11750
SASSKLEG/LOR	13.2 - 20.0			
SASSKLEG-M	17.4 - 24.0			

For 380 - 415 V Coil Voltage replace Suffix 'G' by 'N'

Shakti Fully Automatic Star Delta Starter with 260-400V AC Coil & Electronic Timer

HSN CODE : 8536



Cat. No.	Overload Relay Range (A)	Contactor Type	Contactor Rating (AC-3)	MRP [₹]
SASAGLEG	2.4 - 3.8	Shakti	16 A	12740
SASAHLEG	3.8 - 6.0			
SASAJLEG	6.0 - 9.3			
SASAKLEG	8.9 - 13.5			12955
SASAKLEG/LOR	13.2 - 20.0			
SASAKLEG/MOR	17.4 - 24.0			

For 380 - 415 V Coil Voltage replace Suffix 'G' by 'N'

For other Coil Voltages, kindly refer 'Coil Voltage Master Table' at page 21

Citation DOL Motor Starter

HSN CODE : 8536



Cat. No.	HP / KW at 3Ø, 415V, 50Hz	Overload Relay Range (A)	Contactor Type	Contactor Rating (AC-3)	MRP [₹]	Cat. No. (Open Execution)	MRP [₹]
NADLEN	0.5 / 0.37	0.72 - 1.14	C00N	16 A	4570	NADLENI	4455
NAELEN	0.75 / 0.55	1.07 - 1.70	C00N	16 A	4570	NAELENI	4455
NAFLEN	1 / 0.75	1.58 - 2.50	C00N	16 A	4570	NAFLENI	4455
NAGLEN	2 / 1.5	2.4 - 3.8	C00N	16 A	4570	NAGLENI	4455
NAHLEN	3 / 2.2	3.8 - 6.0	C00N	16 A	4570	NAHLENI	4455
NAJLEN	5 / 3.7	6.0 - 9.3	C00N	16 A	4570	NAJLENI	4455
NAKLEN	7.5 / 5.5	8.9 - 13.5	C00N	16 A	4570	NAKLENI	4455
NALLEN	10 / 7.5	13.2 - 20.0	C00N	16 A	4845	NALLENI	4725
NALLEN/MOR	12.5 / 10	17.4 - 24.0	CP20	20 A	5645	NALLENI/MOR	5675

Citation DOL Motor Starter (A) with NHD Contactor

HSN CODE : 8536



Cat. No.	HP / KW at 3Ø, 415V, 50Hz	Overload Relay Range (A)	Contactor Type	Contactor Rating (AC-3)	MRP [₹]
NAMLEN	15 / 11	17.4 - 24.0	N0N	25A	7710
NAMLEN/NOR	15 / 11	22.0 - 30.0	N0N	25A	8400
NAPLEN/MOR	15 / 11	17.4 - 24.0	N01N	32A	10065
NAPLEN	20 / 15	23.0 - 32.0	N01N	32A	10480
NANLEN	20 / 15	22.0 - 30.0	N1N	40A	11595
NAQLEN	25 / 18.5	26.0 - 40.0	N1N	40A	11765

(B) 30 & 40 HP DOL Starter



Cat. No.	HP / KW at 3Ø, 415V, 50Hz	Overload Relay Range (A)	Contactor Type	Contactor Rating (AC-3)	MRP [₹]
CEHFRGDM*	30 / 22	36.0 - 52.0 (FR OLR)	Freedom	50A	20275
NACT2LEDM	30 / 22	37.6 - 60.0	Citation D	40A	25130
NACT2LEEM	40 / 30	37.6 - 60.0	Citation E	70A	32260

Citation P DOL Motor Starter New

HSN CODE : 8536



Type	Cat. No.	Coil	HP/ KW at 3Ø, 415V, 50Hz	Overload Relay Range (A)	Contactor Rating (AC-3)	MRP [₹]
P2	NBMLEN/LOR	N & G	10 / 7.5	13.2 - 20	25A	5735
P2	NBMLEN	N & G	15 / 11	17.4 - 24	25A	5865
P2	NBMLEN/POR	N & G	15 / 11	23 - 32	25A	6140
P3	NBPLEN	N & WB	20 / 15	23 - 32	32A	6975
P3	NBPLEN/QOR	N & WB	20 / 15	26 - 40	32A	7240
P3H	NBQLEN	N & WB	25 / 18.5	26 - 40	40A	8425

Citation P Auto DOL Motor Starter New

HSN CODE : 8536



Type	Cat. No.	Coil	HP/ KW at 3Ø, 415V, 50Hz	Overload Relay Range (A)	Contactor Rating (AC-3)	MRP [₹]
P1A	ANBKLEN	N & G	7.5 / 5.5	8.9 - 13.5	16A	6555
P1A	ANBLEN	N & G	10 / 7.5	13.2 - 20	16A	6665
P1HA	ANBLEN/MOR	N & G	12.5 / 10	17.4 - 24	20A	6965
P2A	ANBMLEN	N & G	12.5 / 10	17.4 - 24	25A	7890
P2A	ANBMLEN/POR	N & G	15 / 11	23 - 32	25A	8210
P3A	ANBPLEN	N & WB	20 / 15	26 - 40	32A	8970
P3HA	ANBQLEN	N & WB	22.5 / 16.8	26 - 40	40A	10240

For other Coil Voltages, kindly refer 'Coil Voltage Master Table' at page 21

Citation Semi Automatic Star Delta Starter with NHD Contactor

HSN CODE : 8536



Cat. No.	HP / KW at 3Ø, 415V, 50Hz	Overload Relay Range (A)	Contactor Type	Contactor Rating (AC-3)	MRP [₹]
NASSHLEN	10 / 7.5	6.0 - 9.3	C00N	16A	12415
NASSJLEN	10 / 7.5	6.0 - 9.3	C00N	16A	12415
NASSKLEN	15 / 11	8.9 - 13.5	C00N	16A	12415
NASSKLEN/LOR	15 / 11	13.2 - 20.0	C00N	16A	12805
NASSLLEN	20 / 15	13.2 - 20.0	N0N	25A	19765
NASSMLEN	25 / 18.5	17.4 - 24.0	N0N	25A	19890
NASSPLEN	25 / 18.5	23.0 - 32.0	N0N	25A	21480
NASS01PLEN	35 / 26	23.0 - 32.0	N01N	32A	23380
NASS01QLEN	40 / 30	26.0 - 40.0	N01N	32A	23585
NASSNLEN	35 / 26	22.0 - 30.0	N1N	40A	33445
NASS01CT1LEN	40 / 30	24.4 - 39.0	N01N	32A	35100
NASSFRGCLEC4M	40 / 30	29-42 (FR OLR)	C4	32A	37160



Citation Fully Automatic Star Delta Starter with NHD Contactor & Pneumatic Timers

HSN CODE : 8536



Cat. No.	HP / KW at 3Ø, 415V, 50Hz	Overload Relay Range (A)	Contactor Type	Contactor Rating (AC-3)	MRP [₹]
NASAGLEN	3 / 2.2	2.4 - 3.8	C00N	16A	17090
NASAHLEN	5 / 3.7	3.8 - 6.0	C00N	16A	17090
NASAJLEN	10 / 7.5	6.0 - 9.3	C00N	16A	17090
NASAKLEN	15 / 11	8.9 - 13.5	C00N	16A	17090
NASAKLEN/LOR	15 / 11	13.2 - 20.0	C00N	16A	17915
NASALLEN	20 / 15	13.2 - 20.0	N0N	25A	22635
NASAMLEN	25 / 18.5	17.4 - 24.0	N0N	25A	22755
NASAPLEN	30 / 22	23.0 - 32.0	N0N	25A	23700
NASA01PLEN	35 / 26	23.0 - 32.0	N01N	32A	27045
NASANLEN	35 / 26	22.0 - 30.0	N1N	40A	38105
NASAQLEN	40 / 30	26.0 - 40.0	N1N	40A	38330
NASACT1LEN	40 / 30	24.4 - 39.0	N1N	40A	44435

Citation Fully Automatic Star Delta Starter with Citation M Contactor & Pneumatic Timers

HSN CODE : 8536

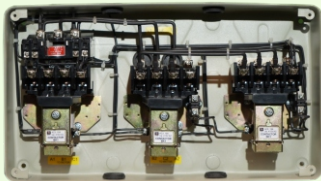


Cat. No.	HP / KW at 3Ø, 415V, 50Hz	Overload Relay Range (A)	Contactor Type	Contactor Rating (AC-3)	MRP [₹]
NASACT1LEDM	40 / 30	24.4 - 39.0	D	40A	51800
NASACT2LEDM	50 / 37	37.6 - 60.0	D	40A	52625
NASACT2LEEM	75 / 55	37.6 - 60.0	E	70A	90840
NASACT3LEEM	85 / 65	56.4 - 90.0	E	70A	96610
NASACT3LECM5M	100 / 75	56.4 - 90.0	M-5	110A	123370
NASACT4LECM5M	135 / 100	84.6 - 135.0	M-5	110A	126130
NASACT4LENM	150 / 110	84.6 - 135.0	N	140A	170730
NASACT5LECM6M	250 / 185	131.6 - 210.0	S	300A	239720
NASACT6LECM6M	375 / 280	188.0 - 300.0	S	300A	289515

For other Coil Voltages, kindly refer 'Coil Voltage Master Table' at page 21

Motor Starters-BK1

New



BK1 DOL Motor Starter

HSN CODE : 8536

Type	Cat. No.	HP/ KW at 3Ø, 415V, 50Hz	Overload Relay Range (A)	Contactor Rating (AC-3)	MRP [₹]
BK1 DOL	BK1DBFWB1	1 HP	1.5-2.5	16A	2655
BK1 DOL	BK1DBGWB1	2 HP	2.5-4	16A	2655
BK1 DOL	BK1DBHWB1	4 HP	4-6.5	16A	2655
BK1 DOL	BK1DBJWB1	6 HP	6-10	16A	2655
BK1 DOL	BK1DBKWB1	7.5 HP	9-14	16A	2655
BK1 DOL	BK1DBKLWB1	7.5 HP	11-18	16A	2710
BK1 DOL	BK1DBLWB1	7.5 HP	13-22	16A	2775
BK2 DOL	BK2DBLWB1	7.5 HP	13-22	25A	3105
BK2 DOL	BK2DBPWB1	7.5 HP	20-32	25A	3105

*WB1 - 250-450V (415V) *WB2 - 200-400V (360V)

BK1 Semi-Automatic Motor Starter

HSN CODE : 8536

Type	Cat. No.	HP/ KW at 3Ø, 415V, 50Hz	Overload Relay Range (A)	Contactor Rating (AC-3)	MRP [₹]
BK1 SASD	BK1SSBHWB1	6 HP	4-6.5	16A	9405
BK1 SASD	BK1SSBJWB1	10 HP	6-10	16A	9405
BK1 SASD	BK1SSBKWB1	12.5 HP	9-14	16A	9405
BK1 SASD	BK1SSBKLWB1	15 HP	11-18	16A	9480
BK1 SASD	BK1SSBLWB1	15 HP	13-22	16A	9595
BK2 SASD	BK2SSBLWB1	15 HP	13-22	25A	10535
BK2 SASD	BK2SSBPWB1	15 HP	20-32	25A	10535

*WB1 - 250-450V (415V) *WB2 - 200-400V (360V)

BK Contactors

HSN CODE : 8536

Cat. No.	Description	MRP [₹]
BK1C16WB1	BK1 Contactor, 4P, 16A, 250-450V AC	1840
BK2C25WB1	BK2 Contactor, 4P, 25A, 250-450V AC	2030

BK Overload Relay

HSN CODE : 8536

Cat. No.	Description	MRP [₹]
BK1OLRBF	Overload Relay, 3P, BK, 1.5-2.5A	1065
BK1OLRBG	Overload Relay, 3P, BK, 2.5-4.0A	1065
BK1OLRBH	Overload Relay, 3P, BK, 4-6A	1065
BK1OLRBJ	Overload Relay, 3P, BK, 6-10A	1065
BK1OLRBK	Overload Relay, 3P, BK, 9-14A	1065
BK1OLRBKL	Overload Relay, 3P, BK, 11-18A	1095
BK1OLRBL	Overload Relay, 3P, BK, 13-22A	1210
BK2OLRBP	Overload Relay, 3P, BK, 20-32A	1335

Spares for BK1 Starters

HSN CODE : 8538

Cat. No.	Description	MRP [₹]
BK1-AS16	Housing (Arc Shield) for BK1 Contactor	140
BK2-AS25	Housing (Arc Shield) for BK2 Contactor	145
BK1-CB16	Contact Bridge for BK1 Contactor	125
BK2-CB25	Contact Bridge for BK2 Contactor	130
BK1-CK16	Contact Kit for BK1 Contactor	785
BK2-CK25	Contact Kit for BK2 Contactor	1110
BKCWB1	Coil 250-450V AC for BK Contactors	275
BKCWB2	Coil 200-400V AC for BK Contactors	275
BK-PB	Twin Push Button for BK Starters	135
BKCB11	Auxiliary contact 1NO+1NC for BK Starter	300
BK1-MC16	Single moving contact for BK1 Contactor	75
BK2-MC25	Single moving contact for BK2 Contactor	105



Fully Automatic Star Delta Starter with Citation M Contactor, Pneumatic Timer & Electronic Over Current Relay with Ammeter & Voltmeter

HSN CODE : 8536



Cat. No.	HP / KW at 3Ø, 415V, 50Hz	EOCR Range (A)	Contactor Type (Citation)	Contactor Rating (AC-3)	MRP [₹]
NASASS60LEDM-P	50 / 37	5-60 Amp	D	40A	63695
NASASS60LEEM-P	75 / 55	5-60 Amp	E	70A	99635
NASA2CTD1CLEM5M-P	100/ 75	0.5-6 Amp (with CT 100/5) (2CT model)	M-5	110A	141110
NASA2CT150LEM5M-P	135/ 100	0.5-6 Amp (with CT 150/5) (2CT model)	M-5	110A	146185

Fully Automatic Star Delta Starter with NHD Contactor, Electronic Timer & Electronic Over Current Relay with Ammeter & Voltmeter and MCB

HSN CODE : 8536

Cat. No.	HP / KW at 3Ø, 415V, 50Hz	EOCR Range (A)	Contactor Type (NHD)	Contactor Rating (AC-3)	MCB Rating	MRP [₹]
NASASS30LEN-P-MCB	25 / 18.5	3-30 Amp	NA25M	25A	40A (TP)	39410

Motor Starters- Freedom

Industrial DOL Starters with Freedom Contactor & Overload Relay

HSN CODE : 8536



Cat. No.	HP / KW at 3Ø, 415V, 50Hz	Overload Relay Type	Overload Relay Range (A)	Contactor Type	Contactor Rating (AC-3)	MRP [₹]
CEBFM	0.5/0.37	Freedom	1.0-1.4	Freedom	9 A	3370
CEBGM	0.75/0.55	Freedom	1.3-1.8	Freedom	9 A	3370
CEBHM	1.0/0.75	Freedom	1.7-2.4	Freedom	9 A	3370
CEBJM	1.5/1.1	Freedom	2.2-3.1	Freedom	9 A	3370
CEBKM	2.0/1.5	Freedom	2.8-4.0	Freedom	9 A	3370
CEBMM	3.0/2.2	Freedom	4.5-6.5	Freedom	9 A	3370
CEBPM	5.0/3.7	Freedom	7.5-11	Freedom	9 A	3370
CECPM	5.0/3.7	Freedom	7.5-11	Freedom	12 A	3460
CECQM	7.5/5.5	Freedom	10-14	Freedom	12 A	3460
CEDQM	7.5/5.5	Freedom	10-14	Freedom	18 A	4375
CEDRM	10/7.5	Freedom	13-19	Freedom	18 A	4375
CECBHM	3.0/2.2	Citation	3.8-6	Freedom	9 A	3370
CECBJM	5.0/3.7	Citation	6-9.3	Freedom	9 A	3370
CECCKM	7.5/5.5	Citation	8.9-13.5	Freedom	12 A	3460
CECDLM	10/7.5	Citation	13.2-20	Freedom	18 A	4375

DOL Reversing Starter

HSN CODE : 8536



Cat. No.	HP / KW at 3Ø, 415V, 50Hz	Overload Relay Range (A)	Contactor Type	Contactor Rating (AC-3)	MRP [₹]
NARFLEN	1/0.75	1.58 - 2.50	C00N	16 A	11315
NARGLEN	2/1.5	2.4 - 3.8	C00N	16 A	11315
NARHLEN	3/2.2	3.8 - 6.0	C00N	16 A	11315
NARJLEN	5/3.7	6.0 - 9.3	C00N	16 A	11315
NARKLEN	7.5/5.5	8.9 - 13.5	C00N	16 A	11315
NARLLEN	10/7.5	13.2 - 20.0	NON	25 A	15350
NARMLLEN	15/11	17.4 - 24.0	N1N	40 A	18760
NARNLEN	20/15	22.0 - 30.0	N1N	40 A	19810

For other Coil Voltages, kindly refer 'Coil Voltage Master Table' at page 17

Motor Starters-Mini, 1-Ph DOL



1- Phase Mini Manual Motor Starter upto 3HP (Surface Mounting)

HSN CODE : 8536



Cat. No.	Recommended HP 1Ø, 240V	Overload Relay Range (A)	MRP [₹]	Cat. No. (with UV Coil)	MRP [₹]
AMLE-10-SP	-	0.23 - 0.47	1665	AMLEH-10-SP	2230
AMLE-20-SP	-	0.46 - 0.80		AMLEH-20-SP	
AMLE-30-SP	1 / 8	0.85 - 1.55		AMLEH-30-SP	
AMLE-40-SP	1 / 6	1.60 - 3.20		AMLEH-40-SP	
AMLE-50-SP	0.5 / 0.75	3.50 - 6.50		AMLEH-50-SP	
AMLE-60-SP	1 to 2	6.80 - 11.7		AMLEH-60-SP	
AMLE-70-SP	2 to 3	11.0 - 20.0		AMLEH-70-SP	

For flush mounting replace 'E' by 'C' and reduce price by ₹ 50

3- Phase Mini Manual Motor Starter upto 10 HP (Surface Mounting)

HSN CODE : 8536



Cat. No.	Recommended HP 3Ø, 415V	Overload Relay Range (A)	MRP [₹]	Cat. No. (with UV Coil)	MRP [₹]
AMLE-10	-	0.23 - 0.47	2245	AMLEN-10	2585
AMLE-20	-	0.46 - 0.80		AMLEN-20	
AMLE-30	0.50 / 0.75	0.85 - 1.55		AMLEN-30	
AMLE-40	1.00 / 1.50	1.60 - 3.20		AMLEN-40	
AMLE-50	3.00	3.50 - 6.50		AMLEN-50	
AMLE-60	5.00	6.80 - 11.7		AMLEN-60	
AMLE-70	10.00	11.0 - 20.0		AMLEN-70	

For flush mounting replace 'E' by 'C' and reduce price by ₹ 50

1-Phase DOL with 2P Contactor & 2P Overload Relay



HSN CODE : 8536



Type	Cat. No.	HP/ KW at 1Ø, 220V, 50Hz	Overload Relay Range (A)	Contactor Rating (AC-3)	MRP [₹]
1P10	NAHLEBW-SP	0.75 / 0.55	3.8 - 6.0	16A	2430
1P10	NAJLEBW-SP	1 / 0.75	6.0 - 9.3	16A	2430
1P10	NAKLEBW-SP	1.5 / 1.10	8.9 - 13.5	16A	2430
1P10H	NALLEBW-SP	2 / 1.5	13.2 - 20	25A	2475
1P10H	NAMLEBW-SP	3 / 2.2	17.4 - 24	25A	2550

Manual Star Delta Starter (with 260-400V AC Coil)

HSN CODE : 8536



Cat. No.	HP at 3Ø, 415V, 50Hz	Overload Relay Range (A)	Contactor Type	Contactor Rating (AC-3)	MRP [₹]
HASSGLEG	3 HP	2.4 - 3.8	C00N	16 A	6955
HASSHLEG	5 HP	3.8 - 6.0	C00N	16 A	6955
HASSJLEG	10 HP	6.0 - 9.3	C00N	16 A	6955
HASSKLEG	15 HP	8.9 - 13.5	N0N	25 A	7905

HSN CODE : 8538

HASSW15	Spare switch for 15 HP MSD Starter	2895
---------	------------------------------------	------

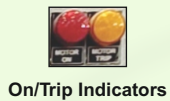
For other Coil Voltages, kindly refer 'Coil Voltage Master Table' at page 17





Three Phase

- Direct on line : upto 40 A relay rating
- Star Delta : upto 135 A relay rating
- Protections :
 - Phase failure
 - Phase imbalance
 - Phase reversal
- Short Circuit Protection Through MCB/MCCB : In case of Premium models
- Auto Start with on delay options:
 - 0.5Sec to 5Min (Field adjustable) SPP Pro
 - 5Sec
 - 5Min
- Ammeter and Voltmeter
- On/Off and Trip indications
- Powder coated enclosure with PU gasket ensuring excellent finish and reliability
- Provision for connecting Dry run preventor



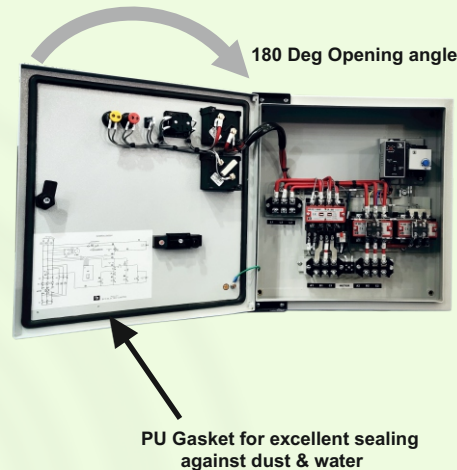
On/Trip Indicators



Isolated Terminal blocks for better termination



Better esthetic look & easy to maintenance to use of Bus-bar



Single Phase

With Mini DOL (up to 11 - 20 A Relay)

- Premium Model (With Ammeter & Voltmeter)

With 2 Pole Contactor + 2 Pole Relay (up to 40 A Relay)

- Economy Model (With Ammeter)
- Standard Model (With Ammeter & Voltmeter)
- Alfa Model up to 30 A Relay (With Ammeter & Voltmeter)
- With Dry Run Protection Model (Digital Meter)
- CPD Model with MCB (Digital VA Meter)

Citation Submersible Pump Starter with 3-Position Selection (with Auto Switch) with or without MCB option

DOL (3-Ph)

HSN CODE : 8536

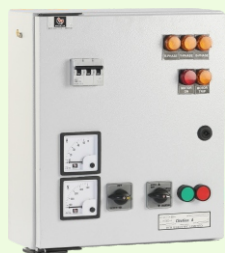


Overload Relay Range (A)	Contactor Type	Contactor Rating (AC-3)	DOL (without Short Circuit Protection)		Premium DOL (with Short Circuit Protection) MCB	
			Cat. No.	MRP [₹]	Cat. No.	MRP [₹]
1.58 - 2.50	C00N	16 A	CPEYNAFN	10155	--	--
2.4 - 3.8	C00N	16 A	CPEYNAGN	10155	--	--
3.8 - 6.0	C00N	16 A	CPEYNAHN	10155	--	--
6.0 - 9.3	C00N	16 A	CPEYNAJN	10155	CPPYNAJN	14695
8.9 - 13.5	C00N	16 A	CPEYNAKN	10155	CPPYNAKN	14695
13.2 - 20.0	C00N	16 A	CPEYNALN	10880	CPPYNALN	15720
17.4 - 24.0	N0N	25 A	CPEYNAMN	12100	CPPYNAMN	17890
23.0 - 32.0	N01N	32 A	CPEYNA01PN	13460	--	--

Citation Submersible Pump Starter with 3-Position Selection (with Auto Switch) with or without MCB / MCCB option

STAR DELTA (3-Ph)

HSN CODE : 8536



Overload Relay Range (A)	Contactor Type	Contactor Rating (AC-3)	Star Delta (without Short Circuit Protection)		Premium Star Delta (with Short Circuit Protection) MCB or MCCB	
			Cat. No.	MRP [₹]	Cat. No.	MRP [₹]
3.8 - 6.0	C00N	16 A	CPSDEYHN	19865	--	--
6.0 - 9.3	C00N	16 A	CPSDEYJN	19865	CPSPDYJN	24020
8.9 - 13.5	C00N	16 A	CPSDEYKN	19865	CPSPDYKN	24020
13.2 - 20.0	C00N	16 A	CPSDEYLN-C00	20215	CPSPDYLN-C00	24935
17.4 - 24.0	CP20	20 A	CPSDEYMN-CP20	22110	--	--
13.2 - 20.0	N0N	25 A	CPSDEYLN	24235	CPSPDYLN	29505
17.4 - 24.0	N0N	25 A	CPSDEYMN	25530	CPSPDYMN	31885
23.0 - 32.0	N01N	32 A	CPSDEY01PN	31425	CPSPDY01N	36390
22.0 - 30.0	N1N	40 A	CPSDEYNN	39150	CPSPDYNN	43635
26.0 - 40.0	N1N	40 A	CPSDEYQN	39725	CPSPDYQN	44240
24.4 - 39.0	N1N	40 A	CPSDEYCT1N	43645	CPSPDYCT1N	51025
37.6 - 60.0	Citation E	70 A	CPSDEYCT2M	69945	CPSPDYCT2M	79475
56.4 - 90.0	Citation E	70 A	CPSDEYECT3M	76105	--	--
56.4 - 90.0	Citation M-5	110 A	CPSDEYCT3M	99835	CPSPDYCT3M	106275
84.6 - 135.0	Citation M-5	110 A	CPSDEYCT4M	102990	CPSPDYCT4M	113045

Shakti DOL Submersible Pump Starter (with Auto Switch) 3-Ph

HSN CODE : 8536



Overload Relay Range (A)	Description		Contactor Rating (AC-3)	3 Position Selection (Manual - Manual SPP - Auto)	
	Contactor Type			Cat. No.	MRP [₹]
2.4 - 3.8	Shakti		20 A	CPEYSAGZ	9515
3.8 - 6.0	Shakti		20 A	CPEYSAHZ	9515
6.0 - 9.3	Shakti		20 A	CPEYSAJZ	9515
8.9 - 13.5	Shakti		20 A	CPEYSAKZ	9515
13.2 - 20.0	Shakti		20 A	CPEYSALZ	10525
17.4 - 24.0	Shakti		20 A	CPEYSAMZ	11075

For 380 - 415 V coil voltage replace suffix "Z" with "N" in the Cat. Code

For other Coil Voltages, kindly refer 'Coil Voltage Master Table' at page 21

Motor Starters-Citation P & Shakti P



Citation P Submersible Pump Starter - Standard and Premium versions

DOL (3-Ph)

HSN CODE : 8536



Type	Overload Relay Range (A)	Contactor Rating (AC-3)	Coil	Standard (without Short Circuit Protection)		Premium (with Short Circuit Protection with MCB) New	
				Cat. No.	MRP [₹]	Cat. No.	MRP [₹]
CITATION P10	1.58 - 2.5	16 A	N & G	CPEYNBFN	9810	CPPYNBFN	11855
CITATION P10	2.4 - 3.8	16 A	N & G	CPEYNBGN	9810	CPPYNBGN	11855
CITATION P10	3.8 - 6	16 A	N & G	CPEYNBHN	9810	CPPYNBHN	11855
CITATION P10	6 - 9.3	16 A	N & G	CPEYNBJN	9810	CPPYNBJN	11900
CITATION P10	8.9 - 13.5	16 A	N & G	CPEYNBKN	9810	CPPYNBKN	11900
CITATION P10	13.2 - 20	16 A	N & G	CPEYNBLN	10100	CPPYNBLN	12445
CITATION P10B	13.2 - 20	20 A	N & G	CPEYNBL2N	10250	CPPYNBL2N	12825
CITATION P10H	17.4 - 24	25 A	N & G	CPEYNBMN	10690	CPPYNBMN	13350
CITATION P11	23 - 32	32A	N & WB	CPEYNBP01N	11955	CPPYNBP01N	14925
CITATION P11	26 - 40	32A	N & WB	CPEYNBQ01N	12115	CPPYNBQ01N	15070
CITATION P12	26 - 40	40A	N & WB	CPEYNBQN	12470	CPPYNBQN	15350

For spare contactor refer page 13

Citation P Submersible Pump Starter - Standard and Premium versions

STAR DELTA (3-Ph)

HSN CODE : 8536



Type	Overload Relay Range (A)	Contactor Rating (AC-3)	Coil	Standard (without Short Circuit Protection)		Premium (with Short Circuit Protection with MCB/MCCB) New	
				Cat. No.	MRP [₹]	Cat. No.	MRP [₹]
CITATION P20	6 - 9.3	16 A	N & G	CPSDEYNBJN	18745	CPSPYNBJN	20090
CITATION P20	8.9 - 13.5	16 A	N & G	CPSDEYNBKN	18745	CPSPYNBKN	20215
CITATION P20	13 - 20	16 A	N & G	CPSDEYNBLN	18925	CPSPYNB LN	20755
CITATION P20A	13.2 - 20	20 A	N, LV & G	CPSDEYNBL2N	19960	CPSPYNB L2N	22300
CITATION P20A	17.4 - 24	20 A	N, LV & G	CPSDEYNBM2N	20070	CPSPYNB M2N	22425
CITATION P20B	23 - 32A	25 A	N, LV & G	CPSDEYNBPN	23145	CPSPYNBPN	26335
CITATION P20H	22 - 30A	32 A	N & WB	CPSDEYNB01NN	23770	CPSPYNB01NN	26925
CITATION P20H	23 - 32A	32 A	N & WB	CPSDEYNB01PN	23785	CPSPYNB01PN	26940
CITATION P20H	26 - 40A	32 A	N & WB	CPSDEYNB01QN	24030	CPSPYNB01QN	29825
CITATION P21	26 - 40A	40 A	N & WB	CPSDEYNBQN	29600	CPSPYNBQN	36035
CITATION P21	36 - 52A (FR OLR)	40 A	N & WB	CPSDEYNBFRGDN	34440	-	-

Range Extension



Type	Overload Relay Range (A) (Freedom OLR)	Contactor Rating (AC-3) (Citation 3P)	Cat. No.	Coil	MRP [₹] New
Citation P32	22 - 32	32 Amp	CPSDEYNBC4FRGBM	M	35325
Citation P40	36 - 52	40 Amp	CPSDEYNBDFRGDM	M	36145
Citation P50	45 - 63	50 Amp	CPSDEYNBD1FRGEM	M	44155
Citation P70	36 - 52	70 Amp	CPSDEYNBEFRGDM	M & LA	57995
Citation P70	45 - 63	70 Amp	CPSDEYNBEFRGEM	M & LA	59735
Citation P70	60 - 80	70 Amp	CPSDEYNBEFRGFM	M & LA	61215
Citation P100	60 - 80	110 Amp	CPSDEYNBM5FRGFM	M & LA	82900

For spare contactor refer page 17

Shakti P DOL Submersible Pump Starter (3-Phase)

HSN CODE : 8536



Type	Overload Relay Range (A)	Contactor Rating (AC-3)	Cat. No.	Coil	MRP [₹]
SHAKTI P6	1.58 - 2.5	12 A	CPEYSBFZ	Z & N & MB	8805
SHAKTI P6	2.4 - 3.8		CPEYSBGZ		
SHAKTI P6	3.8 - 6		CPEYSBHZ		
SHAKTI P6	6 - 9.3		CPEYSBJZ		
SHAKTI P10	8.9 - 13.5	20 A	CPEYSBKZ		8935
SHAKTI P10	13.2 - 20		CPEYSBLZ		9810
SHAKTI P10	17.4 - 24		CPEYSBMZ		10320

*For spare Contactor refer page 19

1-Phase DOL with 2P CPG Contactor & 2P Overload Relay

HSN CODE : 8536



Cat. No.	HP / KW at 1Ø, 220V, 50Hz	Overload Relay Range (A)	Contactor Type	Contactor Rating (AC-3)	MRP [₹]
NAAEBW-SP	-	1.07 - 1.70	2P CPG	12A	3285
NAAHBW-SP	0.75 / 0.55	3.8 - 6.0	2P CPG	12A	3285
NAHBW-SP	0.75 / 0.55	3.8 - 6.0	2P CPG	16A	3325
NAAJBW-SP	1 / 0.75	6.0 - 9.3	2P CPG	12A	3285
NAJBW-SP	1 / 0.75	6.0 - 9.3	2P CPG	16A	3325
NAKBW-SP	1.5 / 1.10	8.9 - 13.5	2P CPG	16A	3325
NAALBW-SP	2 / 1.5	13.2 - 20.0	2P CPG	20A	3410
NALBW-SP	2 / 1.5	13.2 - 20.0	2P CPG	25A	3720
NAMBW-SP	3 / 2.2	17.4 - 24.0	2P CPG	25A	3895

Auto Switch Cum SPP (SPP pro)

- Two type of versions : 6-wire and 7-wire
- Microcontroller based design for advanced functionality
- Protection against single phasing, reverse phasing and unbalance voltage
- Settable ON delay time - 5 Sec to 5 Min
- Integrated Auto/ Manual SPP/ Bypass switch
- LED indication :
 - Healthy Supply Conditions: Green LED is continuous ON
 - Unhealthy Supply Conditions: Green LED is blinking

HSN CODE : 8538



Cat. No.	Description	MRP[₹]
BCHSPP2Z	SPP Pro (6 wire), 230-400V AC	930
BCHSPP2N	SPP Pro (6 wire), 380-415V AC	930
BCHSPP2CW	SPP Pro (6 wire), 260-440V AC	930
BCHSPP2Z-7W	SPP Pro (7 wire), 230-400V AC	930
BCHSPP2N-7W	SPP Pro (7 wire), 380-415V AC	930
BCHSPP2CW-7W	SPP Pro (7 wire), 260-440V AC	930

Motor Starters-1-Ph SPS



1-Phase SPS With 2P Contactor + Overload Relay (Ammeter + Voltmeter) with 160-220V AC Coil HSN CODE : 8536



HP at 1Ø, 220V, 50Hz	Overload Relay Range (A)	Contactor Rating (AC-3)	Cat. No.	Run Capacitor (mfd)	Start Capacitor (mfd)	MRP [₹]
0.5 /0.75 HP	3.8 - 6.0	12 Amp	CPNSHBW-SPE	25	80/100	5480
0.5 /0.75 HP	3.8 - 6.0	16 Amp	CPNSHBW-SP	25	80/100	5595
			CPNSHBW-SP(RC36)	36	80/100	5640
			CPNSHBW-RC25-SC120	25	100/120	5775
			CPNSHBW-RC30-SC200	30	150/200	6535
1 HP	6.0 - 9.3	12 Amp	CPNSJBW-SPE	36	100/120	5700
1 HP	6.0 - 9.3	16 Amp	CPNSJBW-SP	36	100/120	5780
			CPNSJBW-RC20SC100	20	80/100	5745
			CPNSJBW-RC25SC100	25	80/100	5825
			CPNSJBW-RC50SC100	50	80/100	5995
			CPNSJBW-RC60SC150	60	120/150	6275
			CPNSJBW-RC72SC150	72	120/150	6410
			CPNSJBW-SP(RC30)	30	100/120	5825
			CPNSJBW-SP(RC50)	50	100/120	5825
			CPNSJBW-SP(SC100)	36	80/100	6225
CPNSJBW-RC36-SC200	36	150/200	6655			
1.5 HP	8.9 - 13.5	12 Amp	CPNSKBW-SPE	50	120/150	6270
1.5 HP	8.9 - 13.5	16 Amp	CPNSKBW-SP	50	120/150	6305
			CPNSKBW-RC30SC120	30	100/120	6215
			CPNSKBW-RC36SC120	36	100/120	6235
			CPNSKBW-SP(RC36)	36	120/150	6275
			CPNSKBW-SP(RC72)	36+36	120/150	6470
CPNSKBW-RC50-SC200	50	150/200	6900			
2 HP	13.2 - 20.0	16 Amp	CPNSLBW-SP	72	150/200	6750
			CPNSLBW-SP(2RC36)	36+36	150/200	6920
			CPNSLBW-RC100SC150	100	120/150	6800
			CPNSLBW-RC90SC150	45+45	120/150	6930
			CPNSLBW-SP(SC150)	72	120/150	6930
CPNSLBW-RC72SC250	72	200/250	7310			
3 HP	17.4 - 24.0	20 Amp	CPNSMBW-SPE	100	200/250	7200
3 HP	17.4 - 24.0	25 Amp	CPNSMBW-SP	100	200/250	7505
			CPNSMBW-SP(2RC50)	50+50	200/250	7795
3 HP	22.0 - 30.0	25 Amp	CPNSNBW-SP	100	200/250	8025
			CPNSNBW-SP(2RC50)	50+50	200/250	8255
5 HP	23.0 - 32.0	32 A & 12 A	CPNSPBW-SPE	100+50	200/250	10450
5 HP	23.0 - 32.0	40 A & 16 A	CPNSPBW-SP	100+50	200/250	10715
			CPNSPBW-SP(3RC50)	50+50+50	200/250	10970
5 HP	23.0 - 32.0	40 Amp	New CPNSPBW-SPH	100+50	200/250	9165
			CPNSPBBW-SPH	100+50	200/250	9165
			CPNSPBW-SPH(3R50)	50+50+50	200/250	9165
			CPNSPBBW-SPH(3R50)	50+50+50	200/250	9165
5 HP	28.0 - 40.0	40 Amp	New CPNSQBBW-SPH	100+50	200/250	9625
			CPNSQBW-SPH	100+50	200/250	9625
			CPNSQBBW-SPH(3R50)	50+50+50	200/250	9625
			CPNSQBW-SPH(3R50)	50+50+50	200/250	9625

*Suffix "D" in Cat Code for Dry Run Protection panel (only Extra Terminal is provided to connect Dry Run unit)
**For 170-240V coil, replace "BW" in above cat code with "BBW"

Motor Starters-1-Ph SPS



1-Phase SPS (Alfa Model) With 2P Contactor + Overload Relay (Ammeter + Voltmeter)

HSN CODE : 8536

New

HP at 1Ø, 220V, 50Hz	Overload Relay Range (A)	Contactor Rating (AC-3)	Cat. No.	Run Capacitor (mfd)	Start Capacitor (mfd)	MRP [₹]
0.75 HP	3.8 - 6	16 Amp	CPGNSHBW-SP	25	80-100	4680
1 HP	6 - 9.3	16 Amp	CPGNSJBW-SP	36	100-120	5040
1 HP	6 - 9.3	16 Amp	CPGNSJBBW-SP	36	100-120	5040
1 HP	6 - 9.3	16 Amp	CPGNSJBW-SP(RC50)	50	100-120	5040
1 HP	6 - 9.3	16 Amp	CPGNSJBBW-SP(RC50)	50	100-120	5040
1 HP	6 - 9.3	16 Amp	CPGNSJBW-RC50SC100	50	80-100	5040
1.5 HP	8.9 - 13.5	16 Amp	CPGN SKBW-SP	50	120-150	5425
1.5 HP	8.9 - 13.5	16 Amp	CPGN SKBBW-SP	50	120-150	5425
1.5 HP	8.9 - 13.5	16 Amp	CPGN SKBW-SP(RC72)	72	120-150	5425
1.5 HP	8.9 - 13.5	16 Amp	CPGN SKBBW-SP(RC72)	72	120-150	5425
2 HP	13.2 - 20	16 Amp	CPGN SLBW-SP	72	150-200	5770
2 HP	13.2 - 20	16 Amp	CPGN SLBBW-SP	72	150-200	5770
2 HP	13.2 - 20	16 Amp	CPGN SLBW-SP(2RC36)	36x2	150-200	5770
2 HP	13.2 - 20	16 Amp	CPGN SLBBW-SP(2R36)	36x2	150-200	5770
2 HP	13.2 - 20	16 Amp	CPGN SLBW-RC90SC150	45X2	120-150	5770
2 HP	13.2 - 20	16 Amp	CPGN SLBW-R100SC150	100	120-150	5770
3 HP	17.4 - 24	25 Amp	CPGN SMBW-SP	100	200-250	6300
3 HP	17.4 - 24	25 Amp	CPGN SBBW-SP	100	200-250	6300
3 HP	17.4 - 24	25 Amp	CPGN SMBW-SP(2RC50)	50x2	200-250	6300
3 HP	17.4-24	25 Amp	CPGN SBBW-SP(2R50)	50x2	200-250	6300
3 HP	22 - 30	25 Amp	CPGN SNBW-SP(2RC50)	50x2	200-250	6615

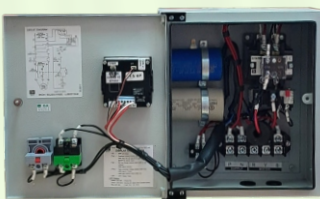


1-Phase SPS With 2P Contactor + Overload Relay + Dry Run Protection

HSN CODE : 8536

New

HP at 1Ø, 220V, 50Hz	Overload Relay Range (A)	Contactor Rating (AC-3)	Cat. No.	Run Capacitor (mfd)	Start Capacitor (mfd)	MRP [₹]
0.75 HP	3.8 - 6	16 Amp	CPGND1HBW-SP	25	80-100	5705
1 HP	6 - 9.3	16 Amp	CPGND1JBW-SP	36	100-120	5895
1 HP	6 - 9.3	16 Amp	CPGND1JBBW-SP	36	100-120	5895
1 HP	6 - 9.3	16 Amp	CPGND1JBW-SP(RC50)	50	100-120	5940
1 HP	6 - 9.3	16 Amp	CPGND1JBW-R50S100	50	100-120	6115
1.5 HP	8.9 - 13.5	16 Amp	CPGND1KBW-SP	50	120-150	6430
1.5 HP	8.9 - 13.5	16 Amp	CPGND1KBBW-SP	50	120-150	6430
1.5 HP	8.9 - 13.5	16 Amp	CPGND1KBW-SP(RC72)	72	120-150	6595
2 HP	13.2 - 20	16 Amp	CPGND1LBW-SP	72	150-200	6880
2 HP	13.2 - 20	16 Amp	CPGND1LBBW-SP	72	150-200	6880
2 HP	13.2 - 20	16 Amp	CPGND1LBW-SP-2R36	36x2	150-200	7055
2 HP	13.2 - 20	16 Amp	CPGND1LBBW-SP-2R36	36x2	150-200	7055
2 HP	13.2 - 20	16 Amp	CPGND1LBW-R90S150	45X2	150-200	7065
2 HP	13.2 - 20	16 Amp	CPGND1LBW-R100S150	100	150-200	6935
3 HP	17.4 - 24	25 Amp	CPGND1MBW-SP	100	200-250	7650
3 HP	17.4 - 24	25 Amp	CPGND1MBBW-SP	100	200-250	7650
3 HP	17.4 - 24	25 Amp	CPGND1MBW-SP-2R50	50x2	200-250	7945
3 HP	17.4 - 24	25 Amp	CPGND1MBBW-SP-2R50	50x2	200-250	7945
3 HP	22 - 30	25 Amp	CPGND1NBW-SP-2R50	50x2	200-250	8410



1-Phase SPS with 2P DPC Contactor + MCB

HSN CODE : 8536



HP at 1Ø, 220V, 50Hz	SP MCB "C" Curve	Contactor Rating (AC-3)	New Cat. No.	Run Capacitor (mfd)	Start Capacitor (mfd)	MRP [₹]
0.5 HP	6A	20A	CPD2A05CJ06	25	80-100	3570
0.75 HP	10A	20A	CPD2A07AK10	36	40-60	3570
1 HP	10A	20A	CPD2A10BM10	50	60-80	3595
1 HP	10A	20A	CPD2A10CK10	36	80-100	3595
1 HP	10A	20A	CPD2A10DK10	36	100-120	3625
1 HP	10A	20A	CPD2A10DM10	50	100-120	3665
1.5 HP	16A	20A	CPD2A15DL16	72	100-120	3730
1.5 HP	16A	20A	CPD2A15GM16	50	120-150	3730
1.5 HP	16A	20A	CPD2A15GL16	72	120-150	3795



Spares for 1-Phase Submersible Pump Starter (CPD)

Cat. No.	Description	MRP [₹]
SPA1A30V300	Digital VA Meter A1, AM30A, VM300V, S-72	650
SPA1VM-CT	CT for Digital VA Meter A1	125
SPARC	Off Push Button Red for 1Ph CPD SPS	250
SPAGC	On Push Button Green for 1Ph CPD SPS	305
SPATB530	Terminal Block 30A 5W for 1Ph CPD SPS	150
CPDN202KL	20A, 2P DP Contactor	1030
SP402MCKL	Coil 170-240V 2P DP Contactor (Bulk Pack of 12 nos.)	2530

1-Phase SPS With 2 Pole Contactor + Overload Relay (With Ammeter)

HSN CODE : 8536



Cat. No.	HP at 1Ø, 220V, 50Hz	Overload Relay Range (A)	Contactor Rating (AC-3)	Run Capacitor (mfd)	Start Capacitor (mfd)	MRP [₹]
CPNEHBW-SP	0.5 / 0.75 HP	3.8 - 6.0	16 Amp	25	80/100	5225
CPNEJBW-SP	1 HP	6.0 - 9.3	16 Amp	36	100/120	5515
CPNEKBW-SP	1.5 HP	8.9 - 13.5	16 Amp	50	120/150	6025
CPNELBW-SP	2 HP	13.2 - 20.0	16 Amp	36+36	150/200	6425
CPNEMBW-SP	3 HP	17.4 - 24.0	25 Amp	50+50	200/250	7325
CPNEPBW-SP	5 HP	23.0 - 32.0	40 Amp	50+50+50	200/250	10515

Suffix "D" in Cat Code for Dry Run Protection panel (only Extra Terminal is provided to connect Dry Run unit)

1-Phase SPS With Mini Manual DOL Starter (With Ammeter + Voltmeter)

HSN CODE : 8536



Cat. No.	HP at 1Ø, 220V, 50Hz	Overload Relay Range (A)	Run Capacitor (mfd)	MRP [₹]
CPPM50-25-SP	0.5 / 0.75 HP	3.5 - 6.5	20	3935
CPPM50-25-SP	0.5 / 0.75 HP	3.5 - 6.5	25	3935
CPPM50H-25-SP	0.5 / 0.75 HP	3.5 - 6.5	25	4480
CPPM60-25-SP	1 HP	6.8 - 11	25	3965
CPPM60-36-SP	1 HP	6.8 - 11	36	3965
CPPM60H-36-SP	1 HP	6.8 - 11	36	4505
CPPM60-50-SP	1.5 HP	6.8 - 11	50	4170
CPPM60H-50-SP	1.5 HP	6.8 - 11	50	4740
CPPM70-36-SP	2 HP	11.0 - 20.0	36	4230
CPPM70-50-SP	2 HP	11.0 - 20.0	50	4230
CPPM70H-50-SP	2 HP	11.0 - 20.0	50	4815

Motor Starters-Oil Immersed



DOL Starter - 3 Phase

HSN CODE : 8536

Cat. No.	Overload Relay Range (A)	HRC Fuse Rating (EE Type) (max)	MRP [₹]
OISWPGT	2.4 - 3.8	16A	4325
OISWPHT	3.8 - 6.0	20A	4325
OISWPJT	6.0 - 9.3	25A	4325
OISWPKT	8.9 - 13.5	36A	4325
OISWPLT	13.2 - 20.0	50A	4405
OISWPMT	17.4 - 24.0	63A	4770

Note : The last alphabet in the Cat No. indicates coil voltage : N-380-415VAC ; T-220-400VAC ; Y-240-400VAC

Star Delta Starter - Fully Automatic

HSN CODE : 8536

Cat. No.	Overload Relay Range (A)	HRC Fuse Rating (EE Type) (max)	MRP [₹]
OISDAWPJ*	6.0 - 9.3	20A	12945
OISDAWPK*	8.9 - 13.5	32A	12945
OISDAWPL*	13.2 - 20.0	35A	12945
OISDAWPM*	17.4 - 24.0	50A	13845
OISDAWPP*	23.0 - 32.0	63A	14500



Star Delta Starter - Semi Automatic

HSN CODE : 8536

Cat. No.	Overload Relay Range (A)	HRC Fuse Rating (EE Type) (max)	MRP [₹]
OISDSWPJ*	6.0 - 9.3	20A	11625
OISDSWPK*	8.9 - 13.5	32A	11625
OISDSWPL*	13.2 - 20.0	35A	11625
OISDSWPM*	17.4 - 24.0	50A	12500
OISDSWPP*	23.0 - 32.0	63A	13115

Star Delta Starter - Fully Automatic with Auto Unit SPP & 3 Position Auto Manual Switch

HSN CODE : 8536

Cat. No.	Overload Relay Range (A)	HRC Fuse Rating (EE Type) (max)	MRP [₹]
OISDYWPJ*	6.0 - 9.3	20A	15155
OISDYWPK*	8.9 - 13.5	32A	15155
OISDYWPL*	13.2 - 20.0	35A	15155
OISDYWPM*	17.4 - 24.0	50A	16115
OISDYWPP*	23.0 - 32.0	63A	16860

Star Delta Starter - Fully Automatic with Ammeter & Voltmeter

HSN CODE : 8536

Cat. No.	Overload Relay Range (A)	HRC Fuse Rating (EE Type) (max)	MRP [₹]
OISDPYWPL*	13.2 - 20.0	35 A	18630
OISDPYWPM*	17.4 - 24.0	50 A	19600
OISDPYWPP*	23.0 - 32.0	63 A	20500

'N' for 380-415VAC coil & 'Y' for 240-400VAC coil

Spares for Oil Starter

HSN CODE : 8538

Description	Cat. No.	MRP [₹]	
Contact kit without coil for DOL - Power & Auxiliary contacts (set of fix contact, moving contact, hex screws, spring washer, spring clip, spring cap, contact spring)	OCK	540	
Power kit without coil for all 3 contactor of star delta starter (fix contact, moving contact, hex screw, spring washer, spring clip, spring cap, contact spring)	Upto L Relay - OCKSD20	1325	
	M, P Relay OCKSD30	1535	
Auxiliary Contact Kit set for Star Delta Starter	Upto L Relay - OCKSDAUX20	360	
	M, P Relay OCKSDAUX30	360	
Coil -Main & Delta Contactor	220-400V	OCT	630
	240-400V	OCY	630
	380-415V	OCN	630
Coil -Star Contactor	220-400V	OCT-STAR	405
	240-400V	OCY-STAR	405
	380-415V	OCN-STAR	405
ON-Push Button	OPB-ON	170	
OFF-Push Button	OPB-OFF	170	
Incoming Mounting KIT for 20A	OCTKSD20	185	
Incoming Mounting KIT for 30A	OCTKSD30	255	



'NHD' Series 2 Pole Contactor

HSN CODE : 8536

AC# Rating at 240 V AC		Cat. No.	MRP [₹]
AC-1 (A)	AC-3 (A)		
20	12	CPG212*	1540
25	16	CPG216*	1750
35	20	CPG220*	2295
40	25	CPG225*	2640
40	32	CPG232*	2810
50	40	CPG240*	3220



'NHD' Series 4 Pole Contactor

HSN CODE : 8536

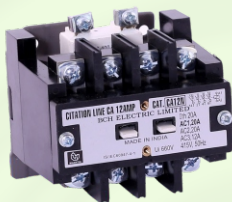
Size	AC1 (A)	AC3 Rating at 415 V AC			Cat. No.	MRP [₹]
		(A)	HP	KW		
CP12	20	12	7.5	5.5	CP12N*	2775
00	20	16	10	7.5	C00N*	3190
CP20	30	20	12.5	9.3	CP20N*	4070
0	32	25	15	11	N0N*	5825
01	40	32	20	15	N01N*	7075
1	50	40	25	18.5	N1N*	8855

HSN CODE : 8538

Auxiliary Contact Blocks - NHD/CPG	1 NO	001CB10	340
Auxiliary Contact Blocks - NHD/CPG	1 NO+1NC	001CB11	400
Auxiliary Contact Blocks - NHD/CPG	2NO	001CB20	400
Auxiliary Contact Blocks - NHD/CPG	2NC	001CB02	400

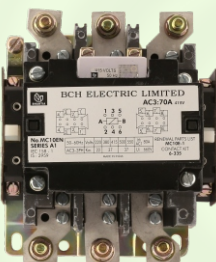
'NHD' Series 1 Aux + 3 P Contactor*

HSN CODE : 8536



Size	AC1 (A)	AC3 Rating at 415 V			Cat. No.	MRP [₹]
		(A)	HP	KW		
CA12	20	12	7.5	5.5	CA12N■	2465
CA16	20	16	10	7.5	CA16N■	2855
CA20	30	20	12.5	9.3	CA20N■	3600
NA25	32	25	15	11	NA25N■	5160
NA32	40	32	20	15	NA32N■	6265
NA40	50	40	25	18.5	NA40N■	7690

*Auxiliary contact is at left side in 1 Aux+ 3P Contactor



Citation Series 3 Pole Contactor

HSN CODE : 8536

Contactor Size	AC# Rating at 415 V		Cat. No.	MRP [₹]	Cat. No.	MRP [₹]
	AC-3 (A)	HP / KW				
C4	32	20 / 15	C4NE22M	7100	C4NE11M	6640
D	40	30 / 22	MC10DN22M	11240	MC10DN11M	9890
D1	50	33.5 / 25	MC10D1N22M	13220	MC10D1N11M	12440
E	70	50 / 37	MC10EN22M	20120	MC10EN11M	19710

New



HSN CODE : 8536

Contactor Size	AC# Rating at 415 V			Aux. Contact	Cat. No.	MRP [₹]
	AC-1 (A)	AC-3 (A)	HP / KW			
M-5	150	110	80 / 60	1 NO + 1 NC	MCE15MN3M5	26900
N	300	140	100 / 75	1 NO + 1 NC	MCE15NN3M7	40120
S	315	300	220 / 160	1 NO + 1 NC	MCE15SN3M7	59060

For other Coil Voltages, kindly refer 'Coil Voltage Master Table' at page 21

Overload Relay for Starters



Citation-M Overload Relays (Direct Mounting) with built in single phase protection

HSN CODE : 8536

HSN CODE : 8538



Cat. No.	Overload Relay Range (A)	MRP [₹]	Terminal Block for individual mounting	MRP [₹]
MC305ANA3A	0.195 - 0.31	1860	(Incoming) MC305TB1 (Outgoing) MC305TB3	270 270
MC305ANA3B	0.30 - 0.48	1860		
MC305ANA3C	0.47 - 0.75	1860		
MC305ANA3D	0.72 - 1.14	1860		
MC305ANA3E	1.07 - 1.70	1860		
MC305ANA3F	1.58 - 2.50	1860		
MC305ANA3G	2.40 - 3.80	1860		
MC305ANA3H	3.80 - 6.00	1860		
MC305ANA3J	6.00 - 9.30	1860		
MC305ANA3K	8.90 - 13.50	1860		
MC305ANA3L	13.20 - 20.0	2060	(Incoming) MC305TB2 (Outgoing) MC305TB3	270 270
MC305ANA3M	17.4 - 24.0	2270		
MC305ANA3N*	22.0 - 30.0	2930		
MC305ANA3P*	23.0 - 32.0	2960		
MC305ANA3Q*	26.0 - 40.0	3210		

*Overload relay type 'N', 'P' & 'Q' must be used with terminal block MC305TB3

CT Operated Overload Relays-Individual Mounting

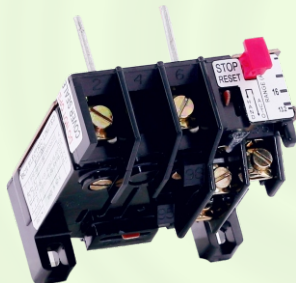
HSN CODE : 8536



Cat. No.	Overload Relay Range (A)	MRP [₹]
CT1MC305ANA3C	24.4 - 39.0	5550
CT2MC305ANA3C	37.6 - 60.0	7160
CT3MC305ANA3C	56.4 - 90.0	8040
CT4MC305ANA3C	84.6 - 135.0	8160
CT5MC305ANA3C	131.6 - 210.0	12340
CT6MC305ANA3C	188.0 - 300.0	14140
CT7MC305ANA3C	263.2 - 420.0	14620
CT8MC305ANA3C	376.0 - 600.0	16970

2 Pole Overload Relays (Direct Mounting)

HSN CODE : 8536



Cat. No.	Overload Relay Range (A)	MRP [₹]
MC307ANA2F	1.58 - 2.50	950
MC307ANA2G	2.40 - 3.80	950
MC307ANA2H	3.80 - 6.00	950
MC307ANA2J	6.00 - 9.30	950
MC307ANA2K	8.90 - 13.50	950
MC307ANA2L	13.20 - 20.0	1100
MC307ANA2M	17.4 - 24.0	1175
MC307ANA2N	22 - 30	1370
MC307ANA2P	23 - 32	1400
New MC307ANA2Q	28 - 40	1550

WP Overload Relays for Shakti WP & Oil Starter

HSN CODE : 8536

Cat. No.	Overload Relay Range (A)	MRP [₹]
MC307ANA3J / MC307ANA3J-OS	6.00 - 9.30	1680
MC307ANA3K / MC307ANA3K-OS	8.90 - 13.50	1680
MC307ANA3L / MC307ANA3L-OS	13.20 - 20.0	1865
MC307ANA3M / MC307ANA3M-OS	17.4 - 24.0	2065
MC307ANA3N	22.0 - 30.0	2480
MC307ANA3P	23.0 - 32.0	2555

Spares for Shakti Starters

HSN CODE : 8538

Cat. No.	Description	MRP [₹]
SHA	Contact Kit*	1115
SHAA	Contact Kit 12A (1 Aux + 3P)**	960
SHZ	Coil 190- 400 V	470
SHCC	Contact carrier	105
SHPB	Extended Button Assembly	310
SHCO	Shakti Contactor for DOL 20A	2815
SHACO	Shakti Contactor for Star Delta 16A	3170
SHCOA	Shakti Contactor for DOL 12A	2405
NCPNYAU*-5S or 5M	SPP (for ASX & OISDY)-6 Wire	930
CPTB630	Terminal Block 30A 6-way (Auto DOL)	320
CPAMS-3P/ASX	Auto Manual Switch 3-pos (Auto DOL)	525

* Shakti Kit consist of - 8 Fixed main contacts, 4 moving main contacts, 4 springs & 4 retainers

** Shakti 1 Aux + 3P Kit consist of - 6 Fixed main contacts, 3 moving main contacts, 2 Aux main contacts, 1 Aux moving contact, 4 springs & 4 retainers

HSN CODE : 8538

Cat No.	Description	MRP [₹]
SPSRW8	Power Terminal Screw - 4p NHD Contactor	120
SPSRWSD4	Screw (4nos.) for Star Delta Starter	45
SPSRWDOL2	Screw (2nos.) for DOL Starter-Citation/Shakti	30
SPGR2	Gromet (2nos.) for DOL Starter-Citation/Shakti	25

Spares for 3-Phase Submersible Pump Starter

HSN CODE : 8538

Cat. No.	Description	MRP [₹]
NCPYAU*-5S or 5M	SPP (3 Position SPS)-6 wire	930
BCHSPP1*-5S or 5M	SPP 6-wire	930
BCHSPP2*	SPP Pro 6-wire	930
SPSATG	Electronic Timer (Star Delta)	1420
SPSATWB-30S	Electronic Timer (Star Delta)	1420
CPAM25	Ammeter 25A	650
CPAM50	Ammeter 50A	650
CPAM100	Ammeter 100A	685
CPVM500	Voltmeter 500V	650
CPTB215	Terminal Block 15A 2 way	80
CPTB360	Terminal Block 60A 3 way	245
CPTB660	Terminal Block 60A 6 way	400
CPTB3100	Terminal Block 100A 3 way	820
CPMB	Mounting Bracket Set	165
CPAMS-2P	Auto Manual Switch 2 position	400
CPAMS-3P	Auto Manual Switch 3 position	425
CPVSS	Voltmeter Selector Switch	430
HEA11GM-PB	Start PB (Green)	220
HEA11RM-PB	Stop PB (Red)	220
HCB10	Aux Block (1 NO)	125
HCB01	Aux Block (1 NC)	125
HFB2PAH	LED-Amber (R-Y-B)	385
HFB2XAM	LED-Amber (Motor Trip)	260
HFB2XRM	LED-RED (415 VAC)	260

Spares for Citation M Starters

HSN CODE : 8538

Cat. No.	Description	MRP [₹]
SP100PB3	PB assembly for Citation Starters (Manufactured Before Apr'24)	370
SP100PBC1	PB assembly for Citation Starters (Manufactured from Apr'24 onwards)	370
SP100CB	Start actuator Block for DOL	310
SP100CBS	Start actuator Block for SD	310
SP100TB	Terminal Block for Star Delta Starters	310
CPTB975	Terminal Block for SD Starters (40-50 HP)	965
SPSATG	Electronic Timer (Star Delta)	1420
For 250-375 HP SD Starter		
TSFB-R	Push Button (RED)	305
TSFB-G	Push Button (Green)	305
050N1	Aux Contact Block(1NO+1NC)	390

Discontinued Cat Code	SPP Type	Alternate* Cat Code	SPP used in
CPAU*- 5*	2-Pos SPP	NCPAU*- 5*	2-Pos SPS
CPYAU*- 5*	3-Pos SPP	NCPYAU*- 5*	3-Pos SPS
CPNYAU*- 5*	3-Pos SPP	NCPNYAU*- 5*	Oil SD & Auto DOL

*Extra plate to be used alongwith alternate SPP

Spares for 1-Phase Submersible Pump Starter

HSN CODE : 8538

Cat. No.	Description	MRP [₹]
ILR-B	"ON" Indication Lamp	90
SPAM-10	Ammeter 10A	650
SPAM-15	Ammeter 15A	650
SPAM-25	Ammeter 25A	650
SPAM-50	Ammeter 50A	650
SPVM-300	Voltmeter 300V	650
CPTB530	Terminal Block 30A 5 way (Mini Version)	160
CPTB530H	Terminal Block 30A 5 way (Contr. Version)	260
CPTB330	Terminal Block 30A 3 way	115
CPTB240	Terminal Block 40A 2 way	165
SPGC	"ON" Push Button GREEN upto 24A relay range	305
SPGB	"ON" Push Button GREEN For 32A relay range	305
SPRC	"OFF" Push Button RED	250
MC305TB4	Outgoing Side Terminal Block for 23-32A relay	270

Spares for Freedom DOL

HSN CODE : 8538

Cat. No.	Description	MRP [₹]
C320SCB	Start Contact Block	210
CEPBI	Push Button - Green	110
CEPBO	Push Button - Red	110

KIT for NHD

HSN CODE : 8538

Contactor Rating (AC-3)	4P KIT	MRP [₹]	1 Aux + 3P KIT	MRP [₹]	1P KIT	MRP [₹]
	Cat Code		Cat. No.		Cat. No.	
12A	SP90E1	1100	SP90E2	1000	SP90E01	295
16A	SP90A1	1285	SP90A2	1170	SP90A01	345
20A	SP90F1	1705	SP90F2	1550	SP90F01	450
25A	SP90B1	2470	SP90B2	2245	SP90B01	630
32A	SP90D1	2900	SP90D2	2635	SP90D01	750
40A	SP90C1	3420	SP90C2	3105	SP90C01	870

* 4P Kit consist of - 8 Fixed main contacts, 4 moving main contacts, 4 springs & 4 retainers

* 1 Aux + 3P Kit consist of - 6 Fixed main contacts, 3 moving main contacts, 2 Aux main contacts, 1 Aux moving contact, 4 springs & 4 retainers

KIT for CPG

HSN CODE : 8538

Contactor Rating	Cat. No.	MRP [₹]
12A	CPG122PSP	590
16A	CPG162PSP	670
20A	CPG202PSP	1065
25A	CPG252PSP	1715
32A	CPG322PSP	1785
40A	CPG402PSP	2100

* 2P Kit consist of - 4 Fixed contacts, 2 moving contacts, 2 springs & 2 retainers

2P Contactor

HSN CODE : 8536

2P Contactor Kit

HSN CODE : 8538

Contactor Rating	Cat. No.	MRP [₹]	Rating	Cat. No.	MRP [₹]
16A	CPGN216*	1440	16A	CPGN162PSP	290
20A	CPGN220*	1625	20A	CPGN202PSP	335
25A	CPGN225*	1810	25A	CPGN252PSP	390

* 2P Kit consist of - 4 Fixed contacts, 2 moving contacts, 2 springs & 2 retainers



Spares for P series SPS

HSN CODE : 8538

Cat. No.	Description	MRP [₹]
CPRS-ON-OFF	ROCKER SWITCH ON-OFF	85
CPTB210	10A, 2 way TB for P series SPS	75
CPLED-R	LED RED 415V	235
CPLED-A	LED AMBER 415V	235
SP100CBP	Start Actuator block for P series SPS	310
CPAM10-WH, CPAM15-WH, CPAM25-WH	Ammeter with White Bezel (for Shakti P SPS)	650
CPVM500-WH	Voltmeter 500V White Bezel	650

Spare Coil & Carrier

Contactor	Cat. No.	MRP [₹]
Magnet Coil for NHD/ CPG	SP90MC*	480
Carrier for NHD	SP90CC	115
Carrier for CPG	CPG2PCC	75

Spares for 1-ph Dry Run SPS

HSN CODE : 8538

Cat. No.	Description	MRP [₹]
SPDRPH0.75-S1	DRY RUN PROTECTOR S1, 3.8-6.0A, 0.75 HP	1065
SPDRPJ1-S1	DRY RUN PROTECTOR S1, 6.0-9.3A, 1 HP	1065
SPDRPK1.5-S1	DRY RUN PROTECTOR S1, 8.9-13.5A, 1.5 HP	1065
SPDRPL2-S1	DRY RUN PROTECTOR S1, 13.2-20A, 2 HP	1065
SPDRPM3-S1	DRY RUN PROTECTOR S1, 17.4-24A, 3 HP	1065
SPDRPN3-S1	DRY RUN PROTECTOR S1, 22-30A, 3 HP	1065
SPDRPP5-S1	DRY RUN PROTECTOR S1, 23-32A, 5HP	1065
SPDRP-CT-S1	CT FOR DRY RUN PROTECTOR S1	125
SPDRPCONNECTOR-S1	CONNECTOR FOR DRY RUN PROTECTOR S1	65

Dual Meter

HSN CODE : 9030

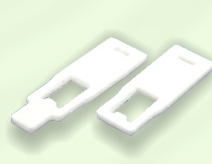
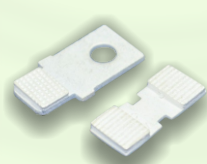
Cat. No.	MRP [₹]
CPAM10VM300, CPAM15VM300, CPAM25VM300, CPAM30VM300, CPAM50VM300	890
CPAM10VM500, CPAM15VM500, CPAM30VM500, CPAM60VM500	950
CPAM30-60VM500S72	925
CPAM60-120VM500S72	1000
CPAM30-60VM500S96	1180
CPAM60-120VM500S96	1320

Spare Freedom Overload Relays for Citation P32 to Citation P100

HSN CODE : 8536

Cat. No.	Overload Relay Range (A)	MRP [₹]
MC318GNA3B	22 - 32	2960
MC318GNA3C	29 - 42	2970
MC318GNA3D	36 - 52	4010
MC318GNA3E	45 - 63	4470
MC318GNA3F	60 - 80	5500

Adaptor for Individual mounting Cat Code- C318F2 (MRP Rs. 540)



Coil Band Master Table



COIL VOLTAGE : MASTER TABLE

	160-220V	170-240V	220-240V	230-360V	260-400V	310-400V	190-400V	230-420V	275-420V	380-415V	415V	440V	550V
	WORKING VOLTAGE BAND	145-264V	187-264V	196-396V	221-440V	264-440V	162-440V	196-462V	234-462V	323-456V	353-456V	374-484V	468-605V
CPG 2P	CPG216	BW	BBW	H	-	-	-	-	-	N	-	-	-
	CPG225	BW	BBW	H	-	-	-	-	-	N	-	-	-
	CPG240	BW	BBW	H	-	-	-	-	-	N	-	-	-
SHAKTI	SHAKTI DOL	-	-	-	G	-	Z	ZB	-	N	-	-	-
	SHAKTI STAR DELTA	-	-	-	G	-	-	-	-	N	-	-	-
NHD 4P	CP12, C00N, CP20	-	-	H	G	-	-	-	MB	N	-	C	D
	N0N	-	-	H	G	-	-	-	MB	N	-	C	D
	N01N	-	-	H	LV	WB	-	-	-	N	-	-	-
	N1N	-	-	H	LV	WB	-	-	-	N	-	C	-
CITATION	C4 & MC10D	-	-	-	-	-	-	-	-	-	M	C	D
	MC10EN	-	-	-	-	-	-	-	-	-	M	C	D
FREEDOM SERIES	MCE15L TO M5	-	-	-	-	-	-	-	-	-	M	C	D
	MCE15N, Q & S	-	-	-	-	-	-	-	-	-	M	C	D

* For N1N DL Coil (340-460V) option is available * For Citation E & M-5 (70A & 110A) LA Coil (320-400V) option is available

MCB/Isolator/MCCB/Distribution Boxes



MCB - B CURVE

HSN Code : 8536

Rated Current	SP	DP	TP	FP
6 - 32A	280	940	1490	2000
40A	630	1470	2260	2850
63A	640	1510	2320	2920

MCB - C CURVE

HSN Code : 8536

Rated Current	SP	SPN	DP	TP	TPN	FP
6 - 32A	280	870	940	1490	1860	2000
40A	630	1300	1470	2260	2520	2850
63A	640	1340	1510	2320	2580	2920

Order in multiple of SP-12 Nos., SPN-6 Nos., DP-6 Nos., TP-4 Nos., TPN-3 Nos., FP-3 Nos.

ISOLATORS

HSN Code : 8536

Poles	Standard Pack of	Rated Current	Cat. No.	MRP [₹]
2P	6 units	40A	BCHISODP40	560
	6 units	63A	BCHISODP63	690
3P	4 units	40A	BCHISOTP40	1000
	4 units	63A	BCHISOTP63	1140
4P	3 units	40A	BCHISOFP40	1170
	3 units	63A	BCHISOFP63	1270

MCCB

HSN Code : 8536

I _{cu} (Overload Setting)	Rated Current	Cat. No.	MRP [₹]
10kA @ (Fixed)	100, 80 (with spreader terminals)	XFE***P	2700
	100, 80 (without spreader terminals)	XFE***P-WT	2570
	63, 50, 40, 32, 25, 20, 16	XFE***P	2570

Code - Current Rating

Rating	16A	20A	25A	32A	40A	50A	63A	80A	100A
*Code	016	020	025	032	040	050	063	080	100

MCCB of any other rating can be offered on request, for more details please refer to Industrial product price list or contact sales team

MCB/MCCB Enclosure

HSN Code : 8537

Type	Product	Description	Cat. No.	MRP [₹]
MCB Enclosure	Enclosure only without MCB	SP, ONE WAY MCB DB	BCHOWMCBDBSP	660
		DP, ONE WAY MCB DB	BCHOWMCBDBDP	660
		TP, ONE WAY MCB DB	BCHOWMCBDBTP	710
		FP, ONE WAY MCB DB	BCHOWMCBDBFP	710

HSN Code : 8536

MCCB Enclosure	Enclosure only (without MCCB)	F1 MCCB Enclosure	F1EU3P	1230
		F2 MCCB Enclosure	F2EU3P	2660

Above MCB/MCCB with the enclosure serves as an ideal solution for main switch.

Complete range of BCH MCB Distribution Boxes are available.

For more details please refer to Comprehensive price list or contact sales team.

BCH Three Core Flat Cables with annealed bare & bunched copper conductor insulated & sheathed with PVC for submersible pump motors for voltage grade 1100 V as per I.S. 694 / 2010, conforming & marked with I.S. 694 / 2010 upto 95 sqmm.

3 Core Flat Cable PVC Insulated Type CS- 500 Mtrs MOQ

HSN Code : 8544

BCH Code	Flat Cable	LP Per 500 Mtrs in [₹]	Remark
CS0010BM	1.0 Sqmm x 3 core Flat cable	On request	Also Available in 100 mtrs & 1000 mtrs
CS0015BM	1.5 Sqmm x 3 core Flat cable	On request	
CS0025BM	2.5 Sqmm x 3 core Flat cable	On request	
CS0040BM	4.0 Sqmm x 3 core Flat cable	On request	
CS0060BM	6.0 Sqmm x 3 core Flat cable	On request	
CS0080BM	8.0 Sqmm x 3 core Flat cable	On request	
CS0100BM	10 Sqmm x 3 core Flat cable	On request	
CS0160BM	16 Sqmm x 3 core Flat cable	On request	
CS0250BM	25 Sqmm x 3 core Flat cable	On request	
CS0350BM	35 Sqmm x 3 core Flat cable	On request	
CS0500BM	50 Sqmm x 3 core Flat cable	On request	
CS0700BM	70 Sqmm x 3 core Flat cable	On request	
CS0950BM	95 Sqmm x 3 core Flat cable	On request	
CS1200BM	120 Sqmm x 3 core Flat cable	On request	

BCH Three Core Flat Cables standard cable with XLPE insulation & ROHS PVC sheath for continuous conductor temperature upto 90 deg. C.

BCH Code	FLAT CS XLPE CABLE	LP Per 500 Mtrs in	Remark
CFTEX-03-0015BM	1.5 Sq. mm x 3 core Flat CS XLPE CABLE	On request	Also Available in 100 mtrs & 1000 mtrs
CFTEX-03-0025BM	2.5 Sq. mm x 3 core Flat CS XLPE CABLE	On request	
CFTEX-03-0040BM	4.0 Sq. mm x 3 core Flat CS XLPE CABLE	On request	
CFTEX-03-0060BM	6.0 Sq. mm x 3 core Flat CS XLPE CABLE	On request	
CFTEX-03-0080BM	8.0 Sq. mm x 3 core Flat CS XLPE CABLE	On request	
CFTEX-03-0100BM	10 Sq. mm x 3 core Flat CS XLPE CABLE	On request	
CFTEX-03-0160BM	16 Sq. mm x 3 core Flat CS XLPE CABLE	On request	
CFTEX-03-0250BM	25 Sq. mm x 3 core Flat CS XLPE CABLE	On request	
CFTEX-03-0350BM	35 Sq. mm x 3 core Flat CS XLPE CABLE	On request	
CFTEX-03-0500BM	50 Sq. mm x 3 core Flat CS XLPE CABLE	On request	

BCH Three Core Flat Cables with annealed bare & bunched copper conductor XLPE insulated & PVC sheathed for submersible pump motors of voltage grade 1100 V. suitable for heavy duty usage and areas having frequent supply undervoltage / overvoltage conditions upto 16.0 sqmm.

3 Core Flat Cable XLPE Insulated Type CFTX- 500 Mtrs MOQ

HSN Code : 8544

BCH Code	Flat Cable	LP Per 500 Mtrs in [₹]	Remark
CFTX-03-0015BM	1.5 Sqmm x 3 core Flat cable XLPE insulated Thick	On request	Also Available in 100 mtrs & 1000 mtrs
CFTX-03-0025BM	2.5 Sqmm x 3 core Flat cable XLPE insulated Thick	On request	
CFTX-03-0040BM	4.0 Sqmm x 3 core Flat cable XLPE insulated Thick	On request	
CFTX-03-0060BM	6.0 Sqmm x 3 core Flat cable XLPE insulated Thick	On request	
CFTX-03-0080BM	8.0 Sqmm x 3 core Flat cable XLPE insulated Thick	On request	
CFTX-03-0100BM	10 Sqmm x 3 core Flat cable XLPE insulated Thick	On request	
CFTX-03-0160BM	16 Sqmm x 3 core Flat cable XLPE insulated Thick	On request	

Note:

"BM" at the end of every code denotes drum of 500 meters. Please use codes mentioned below for different coil lengths:
 "A" - Coil of 100 meters, "CM" - Drum of 1000 meters

For price, please contact our nearest sales office. * LP of flat cables are subject to change without notice.



BCH

Price List

General Terms & Conditions

Prices are subject to change without any prior notice and will be applicable as prevailing at the time of dispatch.

- The prices are ex-works basis..
- The prices given in this list are effective as on date and are subject to change without notice.
- Maximum Retail Price (MRP) mentioned are inclusive of GST.
- The List Prices (LP) mentioned are exclusive of GST.
- The duties, taxes and other statutory levies are based on rates prevailing at the time of billing. Any subsequent revision of those rates having retrospective effective shall be to customer's account.
- In case where any GST exemption has been claimed, the purchaser is responsible for providing the necessary GST exemption form within the specified period, failing which the purchaser would be liable for the payment of full GST plus applicable interest and penalties
- All Prices are in Indian Rupees (₹).
- Alteration made after receipt of confirmation of order are subject to price & delivery revisions and any other expenses or levies
- The dispute, if any, will be resolved mutually by discussion. However, if no settlement is forthcoming then, the Courts at New Delhi shall only have territorial jurisdiction to hear and decide the dispute.

Warranty

All products, unless specifically mentioned otherwise, shall have warranty, against manufacturing defects for a period of 18* months from the date of invoicing & 24 months from date of manufacturing whichever is later subject to the provision of proper usage and does not cover defects arising out of fire, accident, inefficient maintenance, faulty operation and willful or accidental damage. The manufacturer shall not be liable for any consequential loss, injury or damages attributable to defect or failure of its products.

* Proof of purchase to be retained to avail warranty.

- Power Control Products
- Starters & Submersible Pump Starters
- Industrial Enclosures
- Industrial Products
- Wires & Cables
- Motor Control Products
- Power Bus Duct
- Customised Solution
- Automation



BCH ELECTRIC LIMITED



www.bchindia.com



1800-103-9262

customercare@bchindia.com

Visit us at : www.bchindia.com

Corporate Office : 1105, New Delhi House, 27, Barakhamba Road, New Delhi-110 001 Tel. : 91-11- 43673100

CIN : U31103WB1965PLC026427, **Customercare No.** 1800-103-9262, **E-mail :** marketing@bchindia.com

Registered Office : Block 1E, 216, Acharya Jagadish Chandra Bose Road, Kolkata - 700 017

Works 1 : 20/4, Mathura Road, Faridabad -121 006 (Haryana) Tel. : 0129-4063000/4293000 Fax : 0129-2304016

Works 2 : 64-68, Sector-7, IIE, Pant Nagar, Rudrapur, Udham Singh Nagar - 263 153 (Uttarakhand) Tel. : 05944-250214/16 Fax : 05944-250215

Sales Offices :

Ahmedabad

401, Shilp Zeveri,
Beside Shyamal Iconic,
Above Westside,
Shyamal Cross Road,
Ahmedabad - 380015
Tel. : 079-46047740
E-mail: ahmedabad@bchindia.com

Bangalore

2nd Floor, 130/5,
K.H. Road (Double road),
Bangalore - 560 027
Tel. : 080-41144879 / 22236759
E-mail : bangalore@bchindia.com

Bhubaneswar

Mallick Commercial
Complex Plot No.: A/69, unit - 3
Bhubaneswar - 751 001
Tel. : 0674-3594970
E-mail: bhubaneswar@bchindia.com

Chandigarh (Panchkula)

SCO -270, 2nd Floor,
Sector-16, Panchkula
Haryana-134 113
Tel. : 0172-5078957 / 5049905
E-mail: chandigarh@bchindia.com

Chennai

Flat No. 3A, 3rd Floor,
Sree Apartments,
No.508, TTK Road,
Alwarpet, Chennai 600 018
Tel. : 044-24337046, 24337047
E-mail : chennai@bchindia.com

Coimbatore

87, Dr. Nanjappa Road,
Coimbatore - 641 018
Tel. : 0422-2305311 / 2302599
E-mail : coimbatore@bchindia.com

Delhi 1

801, Akash Deep Building,
26A, Barakhamba Road,
New Delhi - 110 001
Tel. : 011-23313878
E-mail : delhi1@bchindia.com

Delhi 2

710, Deepali Building, 92
Nehru Place, New Delhi - 110 019
Tel. : 011-45720334
E-mail : delhi2@bchindia.com

Dehradun

8, Co-operative Industrial Estate,
Patel Nagar, Dehradun-248001
E-mail : dehradun@bchindia.com

Faridabad

20/4, Mathura Road,
Faridabad - 121 006 (Haryana)
Tel/fax : 0129-4293009
E-mail : faridabad@bchindia.com

Hyderabad

1-8-303/48/13/102, Arya One,
2nd Floor, P. G. Road,
Secunderabad - 500 003
Tel. : 040-66206263/
Fax : 040-66207273
E-mail : hyderabad@bchindia.com

Indore

330-331, Indraprastha Tower,
3rd Floor, 6, M.G. Road,
Indore - 452 001
Tel. : 0731-2510011 / 2510012
E-mail : indore@bchindia.com

Jaipur

25, Hathroi, Gopalbari,
Jaipur - 302 001
Tel. : 0141-2363521
E-mail : jaipur@bchindia.com

Jamshedpur

A.J. Tower, 2B,
2nd Floor, R-Road, Bistupur,
Jamshedpur - 831 001
Tel. : 0657-2321097
E-mail : jamshedpur@bchindia.com

Kolkata

Block 1E, 216,
Acharya Jagadish Chandra Bose Road,
Kolkata - 700 017
Tel. : 033-22871728 / 46021884
E-mail : kolkata@bchindia.com

Lucknow

Shop No.3, First Floor,
Tower T-10, Millennium Place
IBB-2, Sushant Golf City,
Sultanpur Road
Lucknow - 226 030
E-mail : lucknow@bchindia.com

Ludhiana

S.C.O.- 18, 2nd Floor,
Feroze Gandhi Market,
Ludhiana - 140 001
Tel. : 0161-5021807/5022808
E-mail : ludhiana@bchindia.com

Madurai

12, Parvathi Plaza-3rd Floor
70 Feet Road, Ellis Nagar
Madurai - 625016, Tamilnadu
Tel. : 0452-4564830

Mumbai

A-151, Mittal Tower,
Nariman Point,
Mumbai - 400 021
Tel. : 022-22850162
E-mail : mumbai@bchindia.com

Pune

A - 605, 6th Floor,
Kumar Surabhi Building,
Pune Satara Road, Opp. Sai
Baba Temple, Pune - 411 009
E-mail : pune@bchindia.com

Raipur

6th Floor, Office No. 607,
Babylon Capital, Near Oswal
Petrol Pump, VIP Chowk,
G.E. Road, Raipur - 492 006
Tel. : 0771- 4020213
E-mail : raipur@bchindia.com

Vadodara

301, Third Floor, "Florence Classic",
10, Ashapuri Co-Op. Hsg. Soc. Ltd., Opp. VUDA Housing,
Near Cow Circle, Akota, Vadodara - 390 020
Tel. : 0265-2345068
Telefax : 0265-2345068,
E-mail : vadodara@bchindia.com

Other Branch Locations

Cochin : cochin@bchindia.com, **Guwahati :** guwahati@bchindia.com, **Vishakapatnam :** vizag@bchindia.com, **Surat :** surat@bchindia.com, **Trichy :** Trichy@bchindia.com

Resident Engineer Locations

Anantapur	Jodhpur	Madurai	Rajkot	Siliguri
Aurangabad	Jalandhar	Muzaffarnagar	Rajahmundry	Tirunelveli
Bhopal	Kanpur	Nagpur	Ranchi	Udaipur
Calicut	Katni	Nashik	Rourkela	Vapi
Gurgaon	Kharagpur	Nanded	Rudrapur	Vijayawada
Hosapate	Kota	Patna	Salem	Warangal
Hubli	Kolhapur	Puducherry	Satna	Yamuna Nagar

Since product improvement is a continuous process, the data furnished in this brochure may undergo revision without prior notice.