



## INDUSTRIAL PLUGS & SOCKETS SS - T PE



BCH  
ELECTRIC  
LIMITED

# Industrial Plugs & Sockets

## OFF-LOAD Decontactor - SS Type

BCH Industrial Plugs and Sockets (off-load Decontactors) combine simplicity, convenience and reliability. Their unique design makes use of the concept of spring-loaded butt-type contacts, instead of the conventional concept of pin-and-sleeve type.

BIL Industrial Plugs and Sockets are available in several contact combinations both for power as well as control circuits. They have advantages like positive, bayonet-type fitting between plugs and sockets, shrouding of live parts from accidental human touch, reliable earthing through butt-type silver-tipped contact. They are suitable for outdoor applications and for use under conditions of high vibrations. Plugs and sockets up to 5 pins for power circuit are rated for 30A at 500V and those meant for use on control circuits, up to 12 pins, have ratings of 12A at 500V.

## Butt-type silver contacts

- Pre-determined optimum contact pressure for high conductivity.
- Low contact-resistance-low temperature-rise.
- Infinite plug interchangeability with consistent contact pressure i.e. no difference in contact-pressure with new or old plugs.
- Non-deteriorating contact carrying surface.
- Self aligning, self wiping contacts i.e. contacts wipe and align when the plug has been fully inserted.
- Reliability of silver contacts unaffected in high temperature conditions.

## Interchangeability of interiors

The interiors of Plugs and sockets are interchangeable and are retained by cir - clips. The easy interchangeability enables many different arrangements to be made up from a minimum stock of components.

## Earthing

The earth contact is always in the central position thus eliminating the possibility of inadvertently connecting a live contact to earth. It is also impossible to lodge or wedge bare conductors in the socket to obtain a supply.

## Socket cover

The socket is fitted with a strong spring closed gasketed cover making the unit suitable for outdoor use.

## Self Locking design

The plug cannot be pulled out of the socket by its cable or fall out on its own due to positive bayonet type fitting.

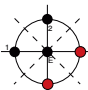
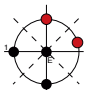
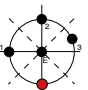
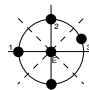
## Electrical and Mechanical Ratings

PARAMETER	PLUGS AND SOCKETS FOR USE ON POWER CIRCUITS	PLUGS AND SOCKETS FOR USE ON CONTROL CIRCUITS
Contact options	2P + E 1P + E + N 3P + E 3P + E + N	Upto 12 contacts
Rated voltage	500V AC and DC	500V AC and DC
Thermal current (Ith)	30A (Copper cable) 20A (Alum. Cable)	12A (Copper cable) 8A (Alum. Cable)
Contact resistance	Less than 1m ohm	Less than 1m ohm
Contact pressure	1.2 kg. (min.) 1.35 kg. (max.)	1 kg. (min.) 1.15 kg. (max.)
Mechanical and electrical life	10,000 operations	10,000 operations
Conduit entry	3/4" dia	3/4" dia
Terminal capacity	6mm <sup>2</sup>	1.5mm <sup>2</sup>
Terminations	Spring loaded	Solder type

## Approvals

- Electronics Components Standardisation Organisation, Ministry of Defence, Bangalore, as per JSS 508 19.
- Nirikshan Niyantanalaya (Vahan), Ahmednagar, for application on Vehicles and Trailors
- Central Machine Tools Institute, Bangalore, as per IEC: 309A

## Selection chart

POWER CIRCUIT APPLICATIONS	CATALOGUE CODE			
Contact options	2P+E*	1P+N+E	3P+E	3P+N+E
Position contacts				
Panel mounting socket		2415B	2413B	2417B
Plug with inclined handle		215B	213B	217B

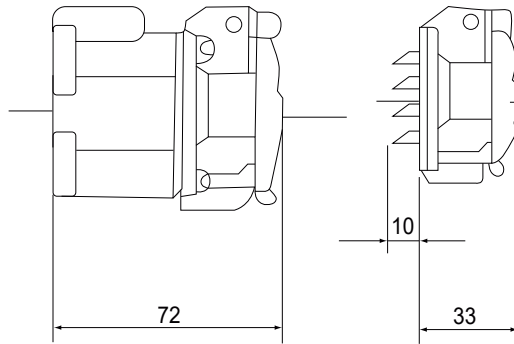
POWER CIRCUIT APPLICATIONS	CATALOGUE CODE	
No. of contacts	Panel mounting socket	Plug with inclined handle
12	2499/12	299/12B

\* Available on request

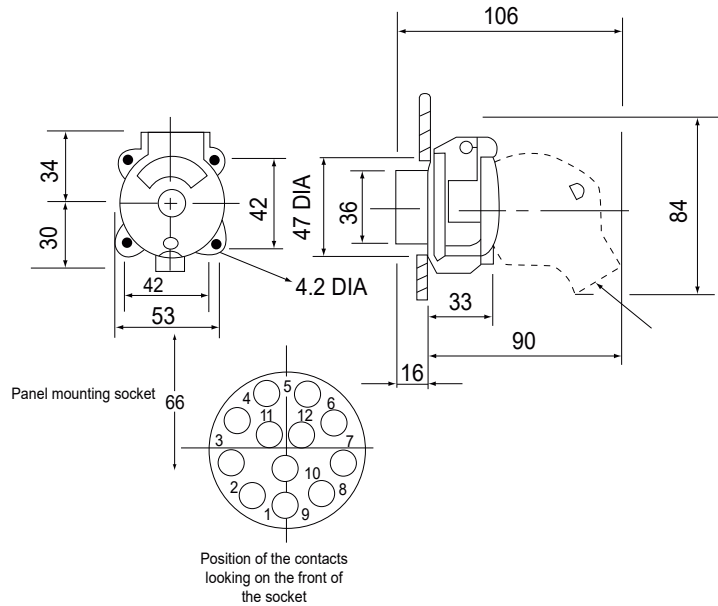
## Dimensions(mm)

### Power Circuit Applications

### Control Circuit Applications



Panel mounting socket



Position of the contacts looking on the front of the socket



# BCH ELECTRIC LIMITED



www.bchindia.com



**1800-103-9262**

customer@bchindia.com

Visit us at : [www.bchindia.com](http://www.bchindia.com)

**Corporate Office :** 1105, New Delhi House, 27, Barakhamba Road, New Delhi - 110 001 Tel. : 91-11- 43673100

**CIN :** U31103WB1965PLC026427, **Customercare No.** 1800-103-9262, **E-mail :** marketing@bchindia.com

**Registered Office :** Block 1E, 216, Acharya Jagadish Chandra Bose Road, Kolkata - 700 017

**Works 1 :** 20/4, Mathura Road, Faridabad - 121 006 (Haryana) Tel. : 0129-4063000/4293000 Fax : 0129-2304016

**Works 2 :** 64-68, Sector-7, IIE, Pant Nagar, Rudrapur, Udham Singh Nagar - 263 153 (Uttarakhand) Tel. : 05944-250214/16 Fax : 05944-250215

#### Sales Offices :

**Ahmedabad**  
401, Shilp Zeveri,  
Beside Shyamal Iconic,  
Above Westside,  
Shyamal Cross Road,  
Ahmedabad - 380015  
Tel. : 079-26589719  
E-mail : ahmedabad@bchindia.com

**Bangalore**  
2nd Floor, 130/5,  
K.H. Road (Double road),  
Bangalore - 560 027  
Tel. : 080-41144879 / 22236759  
E-mail : bangalore@bchindia.com

**Bhubaneswar**  
Mallick Commercial  
Complex Plot No. : A/69, unit - 3  
Bhubaneswar - 751 001  
Tel. : 0674-2380988  
E-mail : bhubaneswar@bchindia.com

**Chandigarh (Panchkula)**  
SCO -129, 2nd Floor,  
MDC, Sector-5 Panchkula,  
Haryana-134 114  
Tel. : 0172-5078957 / 5049905  
E-mail : chandigarh@bchindia.com

**Chennai**  
Flat No. 3A, 3rd Floor,  
Sree Apartments,  
No.508, TTK Road,  
Alwarpet, Chennai 600 018  
Tel. : 044-24337046, 24337047  
E-mail : chennai@bchindia.com

**Coimbatore**  
87, Dr. Nanjappa Road,  
Coimbatore - 641 018  
Tel. : 0422-2305311 / 2302599  
E-mail : coimbatore@bchindia.com

**Delhi 1**  
801, Akash Deep Building,  
26A, Barakhamba Road,  
New Delhi - 110 001  
Tel. : 011-23313878 / 43518200  
E-mail : delhi@bchindia.com

**Delhi 2**  
710, Deepali Building, 92  
Nehru Place, New Delhi - 110 019  
Tel. : 011-45720334  
E-mail : delhi2@bchindia.com

**Dehradun**  
8, Co-operative Industrial Estate,  
Patel Nagar, Dehradun-248001  
E-mail : dehradun@bchindia.com

**Faridabad**  
20/4, Mathura Road,  
Faridabad - 121 006 (Haryana)  
Telfax : 0129-4293009  
E-mail : faridabad@bchindia.com

**Hyderabad**  
1-8-303/48/13/102, Arya One,  
2nd Floor, P. G. Road,  
Secunderabad - 500 003  
Tel. : 040-66206263/27890306  
Fax : 040-66207273  
E-mail : hyderabad@bchindia.com

**Indore**  
330-331, Indraprastha Tower,  
3rd Floor, 6, M.G. Road,  
Indore - 452 001  
Tel. : 0731-2510011 / 2510012  
E-mail : indore@bchindia.com

**Jaipur**  
25, Hathroi, Gopalbari,  
Jaipur - 302 001  
Tel. : 0141-2363521  
E-mail : jaipur@bchindia.com

**Jamshedpur**  
3rd Floor, Aastha Trade Centre,  
'Q' Road, Bistupur,  
Jamshedpur - 831 001  
Tel. : 0657-2321097/2321481  
E-mail : jamshedpur@bchindia.com

**Kolkata**  
Block 1E, 216,  
Acharya Jagadish Chandra Bose Road,  
Kolkata - 700 017  
Tel. : 033-22871728 / 46021884  
E-mail : kolkata@bchindia.com

**Lucknow**  
Madan Plaza, 3rd Floor,  
14, Station Road,  
Lucknow - 226 001  
Tel. : 0522-4025597/4025997  
E-mail : lucknow@bchindia.com

**Ludhiana**  
S.C.O. - 18, 2nd Floor,  
Feroze Gandhi Market,  
Ludhiana - 140 001  
Tel. : 0161-5021807/5022808  
E-mail : ludhiana@bchindia.com

**Mumbai**  
A-151, Mittal Tower,  
Nariman Point,  
Mumbai - 400 021  
Tel. : 022-22822947/22850162  
Fax : 022-22822858  
E-mail : mumbai@bchindia.com

**Pune**  
8, Sarosh Bhavan,  
16-B/1, Dr. Ambedkar Road,  
Pune - 411 001  
Tel. : 020-41210002  
E-mail : pune@bchindia.com

**Raipur**  
6th Floor, Office No. 607,  
Babylon Capital, Near Oswal  
Petrol Pump, VIP Chowk,  
G.E. Road, Raipur - 492 006  
Tel. : 0771-4045053  
E-mail : raipur@bchindia.com

**Trichy**  
2B, Kannagi Street,  
Ayyappa Nagar, K.K.Nagar  
Trichy - 620 021, Tamilnadu  
Tel. : 0431-4040497  
E-mail : trichy@bchindia.com

**Vadodara**  
301, Third Floor, "Florence Classic",  
10, Ashapuri Co-Op. Hsg. Soc. Ltd., Opp. VUDA Housing,  
Near Cow Circle, Akota, Vadodara - 390 020  
Tel. : 0265-2345068/2345069  
Telefax : 0265-2345068,  
E-mail : vadodara@bchindia.com

#### Other Branch Locations

**Cochin :** cochin@bchindia.com, **Guwahati :** guwahati@bchindia.com, **Vishakapatnam :** vizag@bchindia.com, **Surat :** surat@bchindia.com

#### Resident Engineer Locations

Anantapur	Kanpur	Nashik	Salem	Yamunanagar
Bhopal	Katni	Patna	Siliguri	
Calicut	Karimnagar	Puducherry	Surat	
Gurgaon	Kota	Rajkot	Tirunelveli	
Jalandhar	Midnapur	Ranchi	Udaipur	
Jalgaon	Muzaffarnagar	Rourkela	Vapi	
Jodhpur	Nagpur	Rudrapur	Vijayawada	

Since product improvement is a continuous process, the data furnished in this brochure may undergo revision without prior notice.