



BCH
ELECTRIC
LIMITED



ENCLOSURES

Price List effective 17th April 2026

Modern facilities at Faridabad & Rudrapur



Our Strengths

- ◆ State-of-the-art product development and R&D
- ◆ Modern manufacturing facilities
- ◆ Tool room with latest facilities
- ◆ Serving customers for five decades
- ◆ Presence in ~50 locations
- ◆ 650 channel partners
- ◆ ISO 9001:2015 & ISO 14001:2015, ISO 45001: 2018 certified company

Core Values

- ◆ Integrity
- ◆ Nurturing People
- ◆ Commitment to Customers
- ◆ Striving for Excellence
- ◆ Long Term Thinking

Quality Policy

We as a member of BCH Electric Limited manufacturer of Low Voltage Switchgear & Controlgear products, are fully committed to provide Quality products and service in compliance with applicable Statutory and Regulatory requirements, to meet or exceed the customer need and expectations through -

- ◆ Continual improvement
- ◆ Involvement of employees
- ◆ Setting Quality objectives
- ◆ Training and development of employees

Health & Safety Policy

We as a member of BCH Electric Limited manufacturer of Low Voltage Switchgear & Controlgear products, are fully committed to conduct Business in compliance to applicable Health & Safety legislation and regulation.

We shall continually improve through -

- ◆ Provide Safe & Healthy working conditions for the prevention of work related injury and ill health.
- ◆ Develop & maintain the Health & Safety objectives & targets and conduct health & safety programs for achieving the objectives and target.
- ◆ The prevention of accidents through the identification, assessment and elimination of workplace hazards and the promotion of health & safety awareness among its employees and contractors.
- ◆ Encourage employee's participation and consultation in matters affecting the health, safety and well being of our people and seek suggestions from our employees of ways in which health, safety & well being can be furthered.

The Health & safety policy is publicly available on request.

Environmental Policy

We as a member of BCH Electric Limited manufacturer of Low Voltage Switchgear & Controlgear products, are fully committed to conduct Business in compliance to applicable Environmental legislation and regulation.

We shall continually improve through -

- ◆ Provide a framework for setting and reviewing environmental objectives and targets.
- ◆ Regularly review the impact of our activities on environment and strive to reduce the pollution/waste.
- ◆ Involve employees in our environmental program and provide necessary training to enable them to discharge their responsibilities towards environment management.
- ◆ Sustain the program of continual improvement in environment in environmental performance incorporating suitable metrics and monitoring.

The Environment policy is publicly available on request.



www.bchindia.com

Enclosures

- Bhartia Enclosure 2.0
- Terminal Box 2.0
- 'BCH-SS' (Stainless Steel) Boxes
- Terminal Boxes
- Bhartia Boxes
- TCE Series Enclosure
- Techno - Modular Enclosures
- Compartmentalized Enclosure (Fixed & Draw-out)
- Control Desk
- IT Racks - 19" and ETSI Racks
- Non Metallic Enclosure





- Available in 45 different variants
- Single/Double door version
- Min. Size : 200Wx300Hx120D mm
- Max. Size : 1200Wx1400Hx400D mm
- Degree of protection
IP66 - IK10 for Single door enclosure
IP55 - IK10 for Double door enclosure
- CE Certified



Bhartia Enclosure 2.0

HSN CODE: 8538

Type	SIZE (WxHxD) mm	MOQ Nos.	Cat No.	List Price [₹]
SINGLE DOOR ENCLOSURE	200X300X120	1	BIL-40000	3955
SINGLE DOOR ENCLOSURE	200X300X150	1	BIL-40010	4310
SINGLE DOOR ENCLOSURE	250X300X150	1	BIL-40020	4475
SINGLE DOOR ENCLOSURE	300X300X150	1	BIL-40030	4820
SINGLE DOOR ENCLOSURE	300X300X210	1	BIL-40040	5140
SINGLE DOOR ENCLOSURE	300X400X150	1	BIL-40050	5360
SINGLE DOOR ENCLOSURE	300X400X210	1	BIL-40060	6005
SINGLE DOOR ENCLOSURE	400X300X150	1	BIL-40070	5250
SINGLE DOOR ENCLOSURE	400X300X210	1	BIL-40080	5890
SINGLE DOOR ENCLOSURE	400X400X150	1	BIL-40090	6005
SINGLE DOOR ENCLOSURE	400X400X210	1	BIL-40100	6370
SINGLE DOOR ENCLOSURE	400X500X150	1	BIL-40110	6785
SINGLE DOOR ENCLOSURE	400X500X210	1	BIL-40120	7190
SINGLE DOOR ENCLOSURE	400X600X210	1	BIL-40140	8475
SINGLE DOOR ENCLOSURE	400X600X350	1	BIL-40150	10510
SINGLE DOOR ENCLOSURE	500X500X210	1	BIL-40160	8475
SINGLE DOOR ENCLOSURE	500X500X300	1	BIL-40170	10165
SINGLE DOOR ENCLOSURE	500X600X210	1	BIL-40180	9720
SINGLE DOOR ENCLOSURE	500X700X210	1	BIL-40190	11050
SINGLE DOOR ENCLOSURE	500X700X300	1	BIL-40200	12715
SINGLE DOOR ENCLOSURE	600X400X210	1	BIL-40210	8635
SINGLE DOOR ENCLOSURE	600X400X300	1	BIL-40220	11100
SINGLE DOOR ENCLOSURE	600X600X210	1	BIL-40230	10425
SINGLE DOOR ENCLOSURE	600X600X300	1	BIL-40240	12520
SINGLE DOOR ENCLOSURE	600X600X350	1	BIL-40250	13280
SINGLE DOOR ENCLOSURE	600X800X210	1	BIL-40260	12585
SINGLE DOOR ENCLOSURE	600X800X250	1	BIL-40270	14435
SINGLE DOOR ENCLOSURE	600X800X300	1	BIL-40280	14405
SINGLE DOOR ENCLOSURE	600X1000X210	1	BIL-40290	15870
SINGLE DOOR ENCLOSURE	600X1000X300	1	BIL-40300	18000
SINGLE DOOR ENCLOSURE	600X1200X300	1	BIL-40310	20670
SINGLE DOOR ENCLOSURE	800X600X300	1	BIL-40320	14320
SINGLE DOOR ENCLOSURE	800X800X210	1	BIL-40330	15820
SINGLE DOOR ENCLOSURE	800X800X300	1	BIL-40340	16795
SINGLE DOOR ENCLOSURE	800X1000X250	1	BIL-40350	19090
SINGLE DOOR ENCLOSURE	800X1000X300	1	BIL-40360	19320
SINGLE DOOR ENCLOSURE	800X1200X300	1	BIL-40370	24065
DOUBLE DOOR ENCLOSURE	1000X800X210	1	BIL-40380	20190
DOUBLE DOOR ENCLOSURE	1000X800X300	1	BIL-40390	23145
DOUBLE DOOR ENCLOSURE	1000X1000X300	1	BIL-40400	26920
DOUBLE DOOR ENCLOSURE	1000X1200X300	1	BIL-40410	30940
DOUBLE DOOR ENCLOSURE	1000X1400X300	1	BIL-40420	37010
DOUBLE DOOR ENCLOSURE	1000X1400X400	1	BIL-40430	40000
DOUBLE DOOR ENCLOSURE	1200X1400X300	1	BIL-40440	39015
DOUBLE DOOR ENCLOSURE	1200X1400X400	1	BIL-40450	42945

MOQ : Minimum order quantity in nos.

Technical Particulars (Bhartia Enclosure 2.0)

- Enclosure body fabricated from 1.2mm/1.6mm
- Enclosure door fabricated from 1.2mm/1.6mm/2.0mm
- Cable entry plate 1.6mm provided at bottom
- Mounting plate made 2.0/2.5mm Galvanised steel
- Foamed in PU Gasket
- Hinged door interchangeable LHS/RHS
- Door opening angle 120°
- Die casted Cam lock provided up to 1000mm height
- 3 - point lock provide for 1200mm and above height
- Powder coated to RAL - 7035 structure finish

Note: Cutout charges will be extra

: Wall mounting bracket set is an additional accessory
(For Bhartia enclosure 2.0 and Terminal Box 2.0 it not a part of standard packing)

HSN CODE: 8538

Type	Cat No.	MOQ Nos.	List Price [₹]
Set of Wall Mounting Bracket (small)	BIL-WM-S	10	225
Set of Wall Mounting Bracket (big)	BIL-WM-B	10	255
Wall Mounting Bracket Kit 20mm	BIL-WM-H20	10	380

Note :

- * Set of wall mounting bracket (small) is suitable for all range of terminal boxes 2.0 and Bhartia Enclosure 2.0 upto size : 400x500x200mm.
- * Set of wall mounting bracket (big) is suitable for Bhartia Enclosure 2.0 beyond size : 400x500x200mm.

*List Prices are Ex-works Faridabad. For detail refer Enclosure Selling Terms & Conditions.
***GST to be charged extra**

www.bchindia.com

Effective from 17.04.2026





- Available in 22 different variants
- Min. Size : 150Wx150Hx80D mm
- Max. Size : 600Wx400Hx120D mm
- Degree of protection: IP66 - IK10
- CE Certified



Terminal Box 2.0

HSN CODE: 8538

SIZE (W x H x D) mm	MOQ	Cat No.	List Price [₹]
150X150X80	1	BIL-30000	1930
200X150X80	1	BIL-30010	2130
300X150X80	1	BIL-30020	2460
200X200X80	1	BIL-30030	2240
300X200X80	1	BIL-30040	2390
400X200X80	1	BIL-30050	2555
600X200X80	1	BIL-30060	3470
150X150X120	1	BIL-30070	2200
200X150X120	1	BIL-30080	2275
300X150X120	1	BIL-30090	2510
400X150X120	1	BIL-30100	2950
200X200X120	1	BIL-30110	2460
300X200X120	1	BIL-30120	2725
400X200X120	1	BIL-30130	3095
500X200X120	1	BIL-30140	3880
600X200X120	1	BIL-30150	4290
300X300X120	1	BIL-30160	3300
400X300X120	1	BIL-30170	3955
500X300X120	1	BIL-30180	4270
600X300X120	1	BIL-30190	5160
400X400X120	1	BIL-30200	4475
600X400X120	1	BIL-30210	5620

MOQ : Minimum order quantity in nos.

Technical Particulars (Terminal Box 2.0)

- Enclosure body fabricated from 1.2mm
- Enclosure door fabricated from 1.2mm
- Holes with rubber grommet at top and bottom of enclosure body provided to facilitate cable entry
- Provision of din rail fixing in horizontal position on predrilled bracket
- Door removable type with quick release fastners
- Foamed in PU Gasket
- Powder coated to RAL - 7035 structure finish

Note: Cutout charges will be extra

*List Prices are Ex-works Faridabad. For detail refer Enclosure Selling Terms & Conditions.

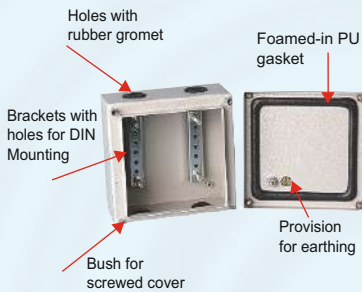
***GST to be charged extra**



- Fabricated from 1.2/1.5 mm stainless steel sheet
- Mounting Plate made up of 2.0mm Galvanised steel
- Cable entry plate 2.0mm SS 304 provided at bottom
- SS grade 304
- Foamed - in PU gasket
- Box upto BIL - 90405020 is made up of 1.2 mm SS & above of 1.5 MM SS.
- Degree of protection IP66
- 120 deg door open-able concealed hinge door with cam locking arrangement.



- 43 Different Versions
- Min. Size : 150 X 150 X 80
- Max Size : 800 X 400 X 120
- Degree of protection IP55/IP66/IK10
- CE Certified



Technical Particulars (TERMINAL BOXES)

- Fabricated from 1.2mm CRCA sheet steel
- Powder coated to shade RAL 7035 Structure finish
- Foamed-in PU gasket
- Provided with screwed cover on top
- Degree of protection IP55/IP66/IK10
- CE Certified
- Brackets provided inside to facilitate DIN rail mounting
- Holes with Gromet provided to facilitate cable entry in IP 55 terminal boxes

Note: Cutout charges will be extra

'BCH - SS' (Stainless Steel)

HSN Code : 8538

Type	Size (WxHxD) mm	MOQ Nos.	Cat No.	List Price [₹]
SINGLE DOOR BOX	200X300X150	1	BIL-90203015	8390
SINGLE DOOR BOX	300X300X200	1	BIL-90303020	11620
SINGLE DOOR BOX	400X400X200	1	BIL-90404020	15370
SINGLE DOOR BOX	400X500X200	1	BIL-90405020	17120
SINGLE DOOR BOX	400X600X200	1	BIL-90406020	19620
SINGLE DOOR BOX	500X600X200	1	BIL-90506020	25130
SINGLE DOOR BOX	600X600X200	1	BIL-90606020	26875
SINGLE DOOR BOX	600X800X200	1	BIL-90608020	31945
SINGLE DOOR BOX	500X700X300	1	BIL-90507030	32445
SINGLE DOOR BOX	800X800X300	1	BIL-90808030	44670

MOQ - Minimum order quantity in nos.

Type	Cat No.	MOQ Nos.	List Price [₹]
SET OF SS WALL MOUNTING BRACKET (SMALL)	BIL-WM-S-SS	5	650
SET OF SS WALL MOUNTING BRACKET (BIG)	BIL-WM-B-SS	5	865

Terminal Boxes

HSN Code : 8538

Box Size (W x H x D)	IP-55 Range			IP-66 Range	
	MOQ	Cat. No.	List Price [₹]	Cat. No.	List Price [₹]
150x150x80	1	BIL-70000	1815	BIL-80000	2085
200x150x80	-			BIL-80100	2295
300x150x80	1	BIL-70010	2135	BIL-80010	2650
200x200x80	1	BIL-70020	2045	BIL-80020	2415
300x200x80	1	BIL-70030	2240	BIL-80030	2580
400x200x80	-			BIL-80110	2755
600x200x80	-			BIL-80130	3750
150x150x120	1	BIL-70040	2010	BIL-80040	2370
200x150x120	-			BIL-80150	2460
300x150x120	1	BIL-70050	2385	BIL-80050	2695
200x200x120	1	BIL-70060	2325	BIL-80060	2650
300x200x120	1	BIL-70070	2590	BIL-80070	2935
400x200x120	1	BIL-70080	2900	BIL-80080	3330
300x300x120	1	BIL-70090	3090	BIL-80090	3560
400x150x120	-			BIL-80170	3180
400x300x120	1	BIL-70180	3420	BIL-80180	4270
400x400x120	1	BIL-70190	4020	BIL-80190	4825
500x200x120	1	BIL-70200	3525	BIL-80200	4185
500x300x120	1	BIL-70210	3910	BIL-80210	4605
600x200x120	1	BIL-70220	3940	BIL-80220	4615
600x300x120	1	BIL-70230	4815	BIL-80230	5570
600x400x120	1	BIL-70240	5285	BIL-80240	6060
800x200x120	1	BIL-70250	5570	BIL-80250	6385
800x400x120	1	BIL-70260	6775	BIL-80260	7670

MOQ-Minimum order quantity in nos.

*List Prices are Ex-works Faridabad. For detail refer Enclosure Selling Terms & Conditions.

***GST to be charged extra**

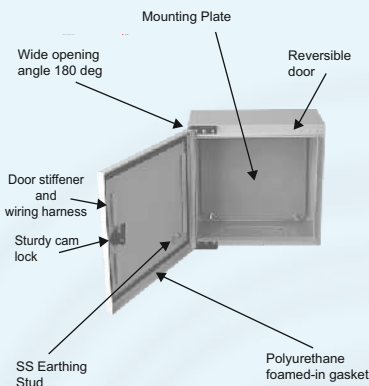
Bhartia Boxes

HSN Code : 8538



- 51 Different Versions
- Single/Double door versions
- Min. Size : 200 X 200 X 150
- Max Size : 1200 X 1400 X 400
- Degree of protection IP55/IP66/IK10
- CE Certified

Double door version



Technical Particulars (BHARTIA BOXES)

- Fabricated from 1.2mm / 1.6mm CRCA sheet steel (Sizes upto BIL-50180 made from 1.2mm CRCA, beyond this using 1.6mm CRCA)
- Foamed-in PU gasket
- Hinged door, interchangeable LHS / RHS, opening angle 180 deg for standard hinge & 120 deg for concealed hinge in bigger sizes.
- Degree of protection IP55/IP66/IK10
- CE Certified
- Cable gland plate 2mm thick provided at bottom
- Cam locking arrangement
- Powder coated to RAL : 7035 structure finish
- Mounting Plate made up of 2.0mm Galvanised steel

Note : Cutout charges will be extra

Wall mounting bracket set is an additional accessory (for Bhartia Box & Terminal box it is not a part of standard packing)

HSN Code : 8538

Type	Cat. No.	MOQ	List Price [₹]
Set of Wall Mounting bracket (small)	BIL-WM-S	10	225
Set of Wall Mounting bracket (big)	BIL-WM-B	10	255
Set of Wall Mounting bracket Kit 20mm	BIL-WM-H20	10	380

Note :

- * Set of wall mounting bracket (small) is suitable for all range of terminal boxes and Bhartia boxes upto size : 400x500x200mm.
- * Set of wall mounting bracket (big) is suitable for Bhartia boxes beyond size : 400x500x200mm.

Type	Size (WxHxD) mm	IP-55 Range			IP-66 Range	
		MOQ Nos.	Cat. No.	List Price [₹]	Cat. No.	List Price [₹]
SINGLE DOOR BOX	200x200x150	1	BIL-50000	3655	BIL-60000	3840
SINGLE DOOR BOX	200x300x150	1	BIL-50010	4645	BIL-60010	4735
SINGLE DOOR BOX	250x300x150	1	BIL-50020	4825	BIL-60020	4975
SINGLE DOOR BOX	300x300x150	1	BIL-50030	5205	BIL-60030	5410
SINGLE DOOR BOX	300x300x200	1	BIL-50050	5545	BIL-60050	5870
SINGLE DOOR BOX	300x400x150	1	BIL-50060	5780	BIL-60060	6085
SINGLE DOOR BOX	300x400x200	1	BIL-50080	6490	BIL-60080	6525
SINGLE DOOR BOX	400x300x150	1	BIL-50090	5665	BIL-60090	6000
SINGLE DOOR BOX	400x300x200	1	BIL-50110	6350	BIL-60110	6445
SINGLE DOOR BOX	400x400x150	1	BIL-50120	6490	BIL-60120	6610
SINGLE DOOR BOX	400x400x200	1	BIL-50140	6870	BIL-60140	7080
SINGLE DOOR BOX	400x500x150	1	BIL-50150	7315	BIL-60150	7700
SINGLE DOOR BOX	400x500x200	1	BIL-50170	7755	BIL-60170	7975
SINGLE DOOR BOX	500x500x200	1	BIL-50180	9140		
SINGLE DOOR BOX	400x600x200	1	BIL-50190	9140	BIL-60190	9270
SINGLE DOOR BOX	500x600x200	1	BIL-50210	10485	BIL-60210	10800
SINGLE DOOR BOX	500x700x200	1	BIL-50220	11920		
SINGLE DOOR BOX	500x700x300	1	BIL-50230	13710		
SINGLE DOOR BOX	600x400x200	1	BIL-50240	9315	BIL-60240	9660
SINGLE DOOR BOX	600x400x300	1	BIL-50250	11970		
SINGLE DOOR BOX	600x500x200	1	BIL-50260	10800	BIL-60260	11670
SINGLE DOOR BOX	600x600x200	1	BIL-50270	11240		
SINGLE DOOR BOX	600x600x300	1	BIL-50280	13510		
SINGLE DOOR BOX	600x700x200	1	BIL-50290	13540		
SINGLE DOOR BOX	600x800x200	1	BIL-50300	13575		
SINGLE DOOR BOX	600x800x300	1	BIL-50320	15535		
SINGLE DOOR BOX	600x1000x200	1	BIL-50330	17120		
SINGLE DOOR BOX	600x1000x300	1	BIL-50340	19425		
SINGLE DOOR BOX	800x800x300	1	BIL-50310	18120		
SINGLE DOOR BOX	800x1000x200	1	BIL-50350	20175		
SINGLE DOOR BOX	800x1000x250	1	BIL-50360	20595		
SINGLE DOOR BOX	800x1000x300	1	BIL-50390	20840		
SINGLE DOOR BOX	800x1200x300	1	BIL-50395	25965		
DOUBLE DOOR BOX	1000x800x200	1	BIL-50500	21775		
DOUBLE DOOR BOX	1000x800x300	1	BIL-50520	24970		
DOUBLE DOOR BOX	1000x1000x300	1	BIL-50540	29035		
DOUBLE DOOR BOX	1000x1200x300	1	BIL-50550	33380		
DOUBLE DOOR BOX	1000x1400x300	1	BIL-50560	39920		
DOUBLE DOOR BOX	1200x1400x300	1	BIL-50570	44380		
DOUBLE DOOR BOX	1000x1400x400	1	BIL-50580	42100		
DOUBLE DOOR BOX	1200x1400x400	1	BIL-50590	46330		

MOQ. Minimum order quantity in nos.

Canopy for Bhartia Boxes

HSN Code : 8538

Size (WxHxD) mm	Cat. No.	MOQ Nos.	List Price [₹]	Size (WxHxD) mm	Cat. No.	MOQ Nos.	List Price [₹]
200WX150D	BIL-12-CAN-2015	1	1070	600WX200D	BIL-16-CAN-6020	1	2050
250WX150D	BIL-12-CAN-2515	1	1215	600WX300D	BIL-16-CAN-6030	1	2510
300WX150D	BIL-12-CAN-3015	1	1300	800WX300D	BIL-16-CAN-8030	1	3055
300WX200D	BIL-12-CAN-3020	1	1410	800WX200D	BIL-16-CAN-8020	1	2485
400WX150D	BIL-12-CAN-4015	1	1470	800WX250D	BIL-16-CAN-8025	1	2680
400WX200D	BIL-12-CAN-4020	1	1620	1000WX200D	BIL-16-CAN-1020	1	2910
500WX200D	BIL-12-CAN-5020	1	1840	1000WX300D	BIL-16-CAN-1030	1	3585
500WX300D	BIL-12-CAN-5030	1	2250				

*List Prices are Ex-works Faridabad. For detail refer Enclosure Selling Terms & Conditions.

*GST to be charged extra

TCE Series Enclosure Code Selection |

Example:-

TCE	06	18	05	-	001
	↓	↓	↓		↓
TCE Series of Enclosure	Width	Height	Depth		Version

Sizes Available |

Width	Height	Depth
06-600 W	18-1800 H	04-400 D
08-800 W	20-2000 H	05-500 D
10-1000 W	22-2200 H	06-600 D
12-1200 W		08-800 D

Version Details |

001	002	003	004	005
Structure:	Structure:	Structure:	Structure:	Structure:
Front Door with Hinge	Front Door with Hinge	Front Door with Hinge	Front Door with Hinge	Front Door with Hinge
Rear Bolted Cover	Rear Door with Hinge	Rear Bolted Cover	Rear Door with Hinge	Rear Door with Hinge
STD Gland Plate	STD Gland Plate	STD Gland Plate	STD Gland Plate	STD Gland Plate
Top Cover	Top Cover	Top Cover	Top Cover	Top Cover
Eye Bolt	Eye Bolt	Eye Bolt	Eye Bolt	Eye Bolt
01 Mounting Plate	01 Mounting Plate	No Mounting Plate	No Mounting Plate	2 Mounting Plate

*List Prices are Ex-works Faridabad. For detail refer Enclosure Selling Terms & Conditions.

***GST to be charged extra**

www.bchindia.com



Technical Particulars for TCE Series

- IP66-IK10 for single door enclosure
- IP65-IK10 for double door enclosure
- Structure made up with 2.0mm CRCA
- Door made up with 2.0mm CRCA and covers made up with 1.6mm CRCA
- Bottom 3-part cable entry provision as standard and made up with 2.0mm GPSP
- Mounting plate with sliding arrangement and made up with 3.0mm GPSP
- Push fit Die casted hinge provided at doors.
- Door with Interchangeability features (LHS/RHS)
- 4-point locking provides as standards
- Separate locking at LHS door with swing handle
- Door stiffener with provision of drilling holes for wiring harness.
- Eye bolt as standard for lifting
- Modular Plinth (optional) 100mm Height with Black finish
- Side Covers – Pair consisting of 1no. LHS and 1no. RHS cover
- Surface finish to enclosure RAL-7035

Note: up to 800 mm width single door
1000 mm & 1200 mm width double door



IK10

IP66 | IP65

CE



*List Prices are Ex-works Faridabad. For detail refer Enclosure Selling Terms & Conditions.
*GST to be charged extra

HSN Code: 8538

Size of Enclosure in mm			Cat No.	Enclosure Version*				
Width (W)	Height (H)	Depth (D)		VER-001 LP [₹]	VER-002 LP [₹]	VER-003 LP [₹]	VER-004 LP [₹]	VER-005 LP [₹]
600	1800	400	TCE061804	37885	42200	30085	34740	
800	1800	400	TCE081804	45250	49655	34400	39775	
1000	1800	400	TCE101804	62280	67120	48305	52825	
1200	1800	400	TCE121804	69990	78175	54295	60185	
600	1800	500	TCE061805	39580	43565	32110	36085	
800	1800	500	TCE081805	46080	51880	36830	41250	
1000	1800	500	TCE101805	63960	68830	50390	55560	
1200	1800	500	TCE121805	71320	81030	57130	64185	
800	1800	600	TCE081806	49130	51550	39985	43775	59900
800	1800	800	TCE081808	51270	56405	42645	47765	68425
600	2000	400	TCE062004	40825	45900	31355	37245	
800	2000	400	TCE082004	47530	52185	36310	41225	
1000	2000	400	TCE102004	68055	71865	52920	56600	
1200	2000	400	TCE122004	73110	80805	58500	66310	
600	2000	500	TCE062005	43330	46930	35570	40200	
800	2000	500	TCE082005	48620	53660	37460	42710	
1000	2000	500	TCE102005	67335	75345	53660	59545	
1200	2000	500	TCE122005	73625	81030	57880	64185	
600	2000	600	TCE062006	43975	48305	37665	41995	58125
800	2000	600	TCE082006	50300	54805	40390	44915	65050
1000	2000	600	TCE102006	68405	78480	54485	63525	95160
1200	2000	600	TCE122006	75080	83240	60805	68600	101060
600	2000	800	TCE062008	45250	48620	37790	42510	63325
800	2000	800	TCE082008	52395	56275	42820	46890	68530
1000	2000	800	TCE102008	75080	80055	57880	64185	93505
1200	2000	800	TCE122008	78925	87540	64835	71320	104440
600	2200	600	TCE062206	49565	54295	39345	46705	65050
800	2200	600	TCE082206	56085	59765	45150	49775	69750
1000	2200	600	TCE102206	77655	83640	63810	69790	97755
1200	2200	600	TCE122206	80690	90075	62715	70065	112030
600	2200	800	TCE062208	54040	58620	41465	47870	62385
800	2200	800	TCE082208	65230	69030	50080	54485	75465
1000	2200	800	TCE102208	82700	89100	67120	72190	103835
1200	2200	800	TCE122208	89445	94485	73245	78175	117100

*List Prices are Ex-works Faridabad. For detail refer Enclosure Selling Terms & Conditions.

***GST to be charged extra**



TCE Bottom Plinth 100mm Height

HSN Code: 8538

Size in MM		Cat No	LP [₹]
Width (W)	Depth (D)		
600	400	TCEPL0604	3415
800	400	TCEPL0804	3895
1000	400	TCEPL1004	4360
1200	400	TCEPL1204	4775
600	500	TCEPL0605	3655
800	500	TCEPL0805	4100
1000	500	TCEPL1005	4575
1200	500	TCEPL1205	4985
600	600	TCEPL0606	3865
800	600	TCEPL0806	4295
1000	600	TCEPL1006	4740
1200	600	TCEPL1206	5170
600	800	TCEPL0608	4295
800	800	TCEPL0808	4740
1000	800	TCEPL1008	5125
1200	800	TCEPL1208	5630



TCE Side Panel

HSN Code: 8538

Size in MM		Cat No	LP [₹]
Height (H)	Depth (D)		
1800	400	TCESP0418	6805
1800	500	TCESP0518	7905
1800	600	TCESP0618	8795
1800	800	TCESP0818	11720
2000	400	TCESP0420	7310
2000	500	TCESP0520	8600
2000	600	TCESP0620	9550
2000	800	TCESP0820	12295
2200	600	TCESP0622	11060
2200	800	TCESP0822	14375

MOQ-Minimum order quantity in nos.

Note: Cutout charges will be extra

Freight charges will be extra at actuals

*List Prices are Ex-works Faridabad. For detail refer Enclosure Selling Terms & Conditions.
*GST to be charged extra

TCE Series Enclosure Accessories

Baying system

HSN Code: 8538

Sl. No	Description	Cat No	LP [₹]
1	Baying Kit	TCE-14280	2530
2	Combination Angle (Pack of 2)	TCE-14281	1330

Mounting plate filler profile

HSN Code: 8538

Sl. No	Description	Cat No	LP [₹]
1	Filler plate for 1800mm Height	TCE-FP-1800	1925
2	Filler plate for 2000mm Height	TCE-FP-2000	2120
3	Filler plate for 2200mm Height	TCE-FP-2200	2325

Wiring plan pocket

HSN Code: 8538

Sl. No	Description	Cat No	LP [₹]
1	File pocket 500mm Width	TCE-TPKT-500	940
2	File pocket 600mm Width	TCE-TPKT-600	1125
3	File pocket 800mm Width	TCE-TPKT-800	1460

Lamp rail

HSN Code: 8538

Sl. No	Description	Cat No	LP [₹]
1	Lamp rail 600mm Width	TCE-LAMP-RAIL-600	270
2	Lamp rail 800mm Width	TCE-LAMP-RAIL-800	370
3	Lamp rail 1000mm Width	TCE-LAMP-RAIL-1000	455
4	Lamp rail 1200mm Width	TCE-LAMP-RAIL-1200	555

Limit switch with fixing arrangement

HSN Code: 8538

Sl. No	Description	Cat No	LP [₹]
1	BCH Limit switch	TCE-LC	1125

Punched section for depth

HSN Code: 8538

Sl. No	Description	Cat No	LP [₹]
1	Punched section 400mm depth	TCE-PSD-400	665
2	Punched section 500mm depth	TCE-PSD-500	940
3	Punched section 600mm depth	TCE-PSD-600	1200
4	Punched section 800mm depth	TCE-PSD-800	1600

Punched section for width

HSN Code: 8538

Sl. No	Description	Cat No	LP [₹]
1	Punched section 600mm width	TCE-PSW-600	1330
2	Punched section 800mm width	TCE-PSW-800	1600
3	Punched section 1000mm width	TCE-PSW-1000	1865
4	Punched section 1200mm width	TCE-PSW-1200	2120

Air Filter Unit

HSN Code: 8538

Sl. No	Description	Cat No	LP [₹]
1	Snap fit air filter 148x148	BIL-SF-1414	1045
2	Snap fit air filter 204x204	BIL-SF-2020	1570
3	Snap fit air filter 255x255	BIL-SF-2525	1735
4	Snap fit air filter 204x204 with mounting adaptor	BIL-SFMA-2020	1830
5	Snap fit air filter 255x255 with mounting adaptor	BIL-SFMA-2525	2290

Door Stay

HSN Code: 8538

Sl. No	Description	Cat No	LP [₹]
1	Door Stay for TCE Series	TCE-DS	1450

Techno Modular Enclosures

HSN Code : 8538

Size of Enclosure (W x H x D in mm)	Cat. No.	Enclosure Version*				Plinth		Side Covers (Pair)	
		Ver 001 LP [₹]	Ver 002 LP [₹]	Ver 003 LP [₹]	Ver 004 LP [₹]	Cat. No.	List Price [₹]	Cat. No.	List Price [₹]
600 x 1800 x 400	TME 061804	35360	39385	28080	32420	TPL 061804	3435	TSC 061804	6855
800 x 1800 x 400	TME 081804	42240	46350	32115	37120	TPL 081804	3910	TSC 081804	6855
1000 x 1800 x 400	TME 101804	58135	62655	45080	49315	TPL 101804	4385	TSC 101804	6855
1200 x 1800 x 400	TME 121804	65310	72960	50680	56175	TPL 121804	4815	TSC 121804	6855
600 x 1800 x 500	TME 061805	36935	40665	29965	33680	TPL 061805	3680	TSC 061805	7960
800 x 1800 x 500	TME 081805	43010	48425	34385	38500	TPL 081805	4145	TSC 081805	7960
1000 x 1800 x 500	TME 101805	59715	64230	47045	51870	TPL 101805	4615	TSC 101805	7960
1200 x 1800 x 500	TME 121805	66575	75635	53320	59915	TPL 121805	5020	TSC 121805	7960
800 x 1800 x 600	TME 081806	45855	48140	37335	40855	TPL 081806	4330	TSC 081806	8855
600 x 2000 x 400	TME 062004	38115	42825	29270	34785	TPL 062004	3435	TSC 062004	7375
800 x 2000 x 400	TME 082004	44355	48715	33895	38475	TPL 082004	3910	TSC 082004	7375
1000 x 2000 x 400	TME 102004	63535	67070	49400	52825	TPL 102004	4385	TSC 102004	7375
1200 x 2000 x 400	TME 122004	68255	75430	54605	61880	TPL 122004	4815	TSC 122004	7375
600 x 2000 x 500	TME 062005	40460	43800	33195	37520	TPL 062005	3680	TSC 062005	8655
800 x 2000 x 500	TME 082005	45385	50100	34975	39880	TPL 082005	4145	TSC 082005	8655
1000 x 2000 x 500	TME 102005	62855	70325	50100	55585	TPL 102005	4615	TSC 102005	8655
1200 x 2000 x 500	TME 122005	68730	75635	54015	59915	TPL 122005	5020	TSC 122005	8655
600 x 2000 x 600	TME 062006	41040	45080	35160	39200	TPL 062006	3880	TSC 062006	9630
800 x 2000 x 600	TME 082006	46950	51165	37705	41935	TPL 082006	4330	TSC 082006	9630
1000 x 2000 x 600	TME 102006	63840	73255	50870	59305	TPL 102006	4785	TSC 102006	9630
1200 x 2000 x 600	TME 122006	70080	77685	56745	64030	TPL 122006	5230	TSC 122006	9630
600 x 2000 x 800	TME 062008	42240	45385	35265	39665	TPL 062008	4330	TSC 062008	12380
800 x 2000 x 800	TME 082008	48905	52545	39970	43770	TPL 082008	4785	TSC 082008	12380
1000 x 2000 x 800	TME 102008	70080	74740	54015	59915	TPL 102008	5160	TSC 102008	12380
1200 x 2000 x 800	TME 122008	73670	81695	60515	66575	TPL 122008	5690	TSC 122008	12380
600 x 2200 x 600	TME 062206	46260	50680	36745	43595	TPL 062206	3880	TSC 062206	11155
800 x 2200 x 600	TME 082206	52355	55790	42130	46455	TPL 082206	4330	TSC 082206	11155
1000 x 2200 x 600	TME 102206	72480	78065	59555	65150	TPL 102206	4785	TSC 102206	11155
1200 x 2200 x 600	TME 122206	75315	84070	58545	65405	TPL 122206	5230	TSC 122206	11155
600 x 2200 x 800	TME 062208	50450	54720	38705	44695	TPL 062208	4330	TSC 062208	14485
800 x 2200 x 800	TME 082208	60885	64435	46770	50870	TPL 082208	4785	TSC 082208	14485
1000 x 2200 x 800	TME 102208	77180	83160	62655	67380	TPL 102208	5160	TSC 102208	14485
1200 x 2200 x 800	TME 122208	83480	88180	68355	72960	TPL 122208	5690	TSC 122208	14485

*Baying kit (BIL-14280) Rs. 2325/- is also available for Enclosure Version. For extra accessories, please contact nearest branch office.

MOQ-Minimum order quantity in nos.

Note : Cutout charges will be extra

Freight charges will be extra at actuals

*List Prices are Ex-works Faridabad. For detail refer Enclosure Selling Terms & Conditions.

***GST to be charged extra**



Brackets for
3 point lock

Robust Mounting
Plate 3MM Thick,
RAL 2000

Gland Plate



Enclosure Versions

- 001 - with mounting plate and rear cover
- 002 - with mounting plate and rear door
- 003 - without mounting plate and with rear cover
- 004 - without mounting plate and with rear door

To Order And Calculate List Price

- (a) Choose Cat. No. and LP of Enclosure version from 001, 002, 003 or 004
- (b) Add Cat. No. and LP of Plinth
- (c) Add Cat. No. and LP of Side Covers pair

General Technical Particulars

- Degree of protection IP55/IK10
- C € Certified
- Fabricated from 2/1.6 mm CRCA/GPSP (frame made up of 2.0mm GPSP, doors & covers made up of 1.6 mm CRCA).
- Fully bolted construction
- Mounting Plate with sliding arrangement - standard & Powder coated to RAL-2000
- Modular Plinth (optional) 100mm high fabricated from CRCA
- Cable entry provision is given from Bottom & made in 3-part construction with Galvanized steel [Unpainted]
- Foamed-in PU gasket
- Powder coated to RAL : 7035 structure finish
- Hinge design allows 120 deg. Door opening
- 3 point lock provided as standard
- Door stiffener with provision of drilling holes for wiring harness.
- Side Covers - Pair : consisting of 1no. LHS and 1no. RHS cover
- To calculate limiting dimension of the enclosure, add 44mm to the width to account for Side Covers,
- 22mm to the height for Top Cover & 44mm to the depth on account of Front and Rear door / cover.

Note : upto 800 mm width single door
1000 mm & 1200 mm width double leaf door

Modular Enclosures

- Enclosures
- Minimum size in mm :
600 x 1800 x 400 (W x H x D)
- Maximum size in mm :
1200 x 2200 x 800 (W x H x D)
- Degree of protection IP55/IK10
- C € Certified
- Wide range of accessories

Features

- Completely modular in all the three axis
- Powder coated surface (RAL 7035) for excellent finish and durability
- PU Gasket ensuring higher degree of ingress protection
- 3mm mounting plate as a standard
- Manufactured on CNC Turret punch press for higher precision, finish and repeated accuracy
- Ideal for :
 - Special purpose machines
 - Control panels
 - PLC panels
 - Starter enclosures
 - Accessories for mounting 19" equipment

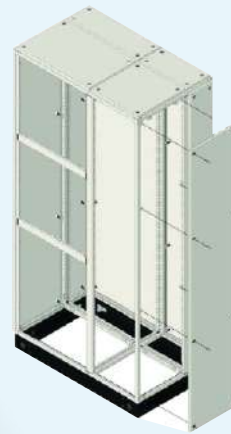
*List Prices are Ex-works Faridabad. For detail refer Enclosure Selling Terms & Conditions.

***GST to be charged extra**
www.bchindia.com

Highlights of **BCH** Compartmentalized **MCC / PCC / PMCC Solution (Fixed & Drawed Type)**



- 100% Modular Structure; can be dispatched in flat pack.
- Flexible compartmentalized -up to Form 4.
- IP 54 degree of protection with polyurethane foam gasket.
- Compartment size available from 200mm height & multiplies of 100mm.
- Additional accessories like Cable support, Busbar support, Limit Switch and Lamp brackets are available.
- Adjustable mounting plates (Depth wise at the pitch of 25mm).
- Panel can be expended in all 3 dimensions and bayed together by using Baying Kit.
- All Structure members (Corner & Cross bar) having M6 extrude hole at 25mm intervals, No need of any Captive hardware.
- Standard Module dimension for Drawout Enclosures.
 - ▷ Single Front :- 900(W) x 2400(H) x 600(D)
 - ▷ Double Front :- 900(W) x 2400(H) x 1200(D)
- Draw-out feeder available from 200mm height (2SU) to 800mm height (8SU).
- Colours:- RAL-7035 (Structure finish) for structure, doors, covers & internal parts RAL-2000 (smooth finish) for Mounting plates, Ral-9000 (Smooth Finish) for Plinth.
- Sheet thickness 2.0mm GPSP for structure, 2.0mm CRCA for Mounting Plate & Mounting rail, 1.6mm CRCA for Doors & Covers, 1.2mm CRCA for Separation plates.



Technical Particulars (CONTROL DESK):

- Desk body: 1.6mm CRCA sheet
- Hinged door: 1.6mm CRCA sheet
- Bottom Gland plate: 2.0mm CRCA sheet
- Mounting plate: 2.0mm GPSP sheet
- Plinth corner: 2.0mm CRCA sheet
- Plinth Trim Plates: 1.6mm CRCA sheet
- Foamed-in PU gasket at front door
- Powder coated to RAL: 7035 structure finish
- Bottom plinth painted with smooth black color
- Mounting plate Zn galvanized



Control Desk

HSN Code : 8538

Type	SIZE (WxHxD) mm	Control DESK		
		MOQ Nos.	Cat No.	List Price [₹]
SINGLE DOOR CONTROL DESK	600X1000X400	1	BIL-CD-061004	21330
SINGLE DOOR CONTROL DESK	800X1000X400	1	BIL-CD-081004	25380
SINGLE DOOR CONTROL DESK	600X1000X500	1	BIL-CD-061005	23220
SINGLE DOOR CONTROL DESK	800X1000X500	1	BIL-CD-081005	28080
DOUBLE DOOR CONTROL DESK	1000X1000X400	1	BIL-CD-101004	29700
DOUBLE DOOR CONTROL DESK	1200X1000X400	1	BIL-CD-121004	34560
DOUBLE DOOR CONTROL DESK	1000X1000X500	1	BIL-CD-101005	33915
DOUBLE DOOR CONTROL DESK	1200X1000X500	1	BIL-CD-121005	38340

Bottom Plinth for Control Desk

HSN Code : 8538

Size in MM		MOQ Nos.	Cat No	List Price [₹]
Width (W)	Depth (D)			
600	400	1	BIL-CDPL-0604	3510
800	400	1	BIL-CDPL-0804	4000
1000	400	1	BIL-CDPL-1004	4485
1200	400	1	BIL-CDPL-1204	4915
600	500	1	BIL-CDPL-0605	3780
800	500	1	BIL-CDPL-0805	4270
1000	500	1	BIL-CDPL-1005	4755
1200	500	1	BIL-CDPL-1205	5185



Key Attributes:

- Aesthetic & robust construction
- Mounting Fan /s in top doesn't take usable "U" space.
- Special type of Wallmounting hardware.
- Provision for earthing available in the cabinets.
- Highly corrosion resistant in nature.
- Power coated to shade RAL : 7035 structure finish.



Key Attributes:

- Floor mounting robust design.
- Lockable & removable side panels.
- 2-pairs of adjustable 19" rails.
- Front door with toughened glass & perforation.
- High load bearing capacity.
- Rear vented door.
- Provision for fan mounting in top which doesn't take usable "U" Space.
- Superior cable management facility in extra wide racks.
- 4-integrated vertical cable managers are default design of 800mm wide racks.
- Rear space saving split door with 3-point secure locking in extra wide (800mm) racks.
- Power coated to shade RAL : 7035 structure finish.

19" Wall Mount Racks

HSN Code : 8538

Dimensions (H x W x D) mm	MOQ Nos.	Cat. No.	List Price [₹]
6UX550X400	1	BIL-W-6-5504	6555
9UX550X400	1	BIL-W-9-5504	7905
6UX550X500	1	BIL-W-6-5505	7235
9UX550X500	1	BIL-W-9-5505	8430
12UX550X500	1	BIL-W-12-5505	9365
15UX550X500	1	BIL-W-15-5505	11025

MOQ-Minimum order quantity in nos.

Standard Configuration: Wallmount cabinet, 2-Pairs of 19" rail.

Notes : Accessories viz. Shelves, Fans, power strips, cable managers captive H/W & wall mounting hardware etc. will be extra as per the accessories list furnished in the price list.
Wall mount racks price do not include freight & will be extra at actuals

19" Networking Racks

HSN Code : 8538

Dimensions (H x W x D) mm	MOQ Nos.	Cat. No.	List Price [₹]
24U X 600 X 600	1	BIL-N-062406	36630
24U X 600 X 800	1	BIL-N-062408	40495
24U X 800 X 600	1	BIL-N-082406	45900
24U X 800 X 800	1	BIL-N-082408	50165
30U X 600 X 600	1	BIL-N-063006	40495
30U X 600 X 800	1	BIL-N-063008	44375
30U X 800 X 600	1	BIL-N-083006	50165
30U X 800 X 800	1	BIL-N-083008	54985
36U X 600 X 600	1	BIL-N-063606	44375
36U X 600 X 800	1	BIL-N-063608	49185
36U X 800 X 600	1	BIL-N-083606	55005
36U X 800 X 800	1	BIL-N-083608	59720
42U X 600 X 600	1	BIL-N-064206	51135
42U X 600 X 800	1	BIL-N-064208	54790
42U X 800 X 600	1	BIL-N-084206	60185
42U X 800 X 800	1	BIL-N-084208	66535
45U X 600 X 600	1	BIL-N-064506	58835
45U X 600 X 800	1	BIL-N-064508	61750
45U X 800 X 600	1	BIL-N-084506	64615
45U X 800 X 800	1	BIL-N-084508	70400

MOQ-Minimum order quantity in nos.

Notes : 1) Networking racks price do not include freight & this will be extra at actuals.

For more details visit : www.bchindia.com/technorack

*List Prices are Ex-works Faridabad. For detail refer Enclosure Selling Terms & Conditions.

***GST to be charged extra**

19" Server Racks

HSN Code : 8538

Key Attributes:

- Floor mounting robust design.
- Lockable & removable side panels.
- 2-pairs of adjustable 19" rails.
- Front door with toughened glass & perforation.
- High load bearing capacity.
- Rear vented door.
- Provision for fan mounting in top which doesn't take usable "U" Space.
- Superior cable management facility in extra wide racks.
- 4-integrated vertical cable managers are default design of 800mm wide racks.
- Rear space saving split door with 3-point secure locking
- locking in extra wide (800mm) racks.
- Power coated to shade RAL : 7035 structure finish.

Dimensions (H x W x D) mm	MOQ Nos.	Cat. No.	List Price [₹]
24U X 600 X 900	1	BIL-S-062409	41385
24U X 600 X 1000	1	BIL-S-062410	43975
30U X 600 X 900	1	BIL-S-063009	46795
30U X 600 X 1000	1	BIL-S-063010	48620
36U X 600 X 900	1	BIL-S-063609	51300
36U X 600 X 1000	1	BIL-S-063610	54040
42U X 600 X 900	1	BIL-S-064209	57685
42U X 600 X 1000	1	BIL-S-064210	61345
42U X 800 X 1000	1	BIL-S-084210	70595
45U X 600 X 900	1	BIL-S-064509	66660
45U X 600 X 1000	1	BIL-S-064510	70525

MOQ - Minimum order quantity in nos.

Notes : Server racks price do not include freight & this will be extra at actuals.

STANDARD CONFIGURATION: Basic frame, Top & bottom, Front Glass door with perforation, Rear vented door, Lockable & detachable side panels, 2-Pairs of 19" rails with depth members.



Key Attributes:

- Includes 1-Pair of 21" rails.
- Integrated side panels.
- Grouting arrangements along with grouting bolts as std. BOM
- Provision for power & detachable Cable entry/exit in top & bottom.
- Power coated to shade RAL : 7035 structure finish.

ETSI Racks

HSN Code : 8538

Dimensions (H x W x D) mm	MOQ Nos.	Cat. No.	List Price [₹]
2200 X 600 x 300	1	ITE-062203	On request
2200 X 600 x 600	1	ITE-062206	On request

MOQ - Minimum order quantity in nos.

Notes : Above ETSI configuration do not include front & rear door and covers.

All other accessories will be extra & will be furnished on request.

The prices mentioned above do not include freight.



Key Attributes:

- 1-Pair of vertical cable manager is default design.
- Surface pretreated and advance powder coated
- Grouting bolts as std. BOM.
- Power coated to shade RAL : 7035 structure finish.

19" Open Racks

HSN Code : 8538

Dimensions (H x W) mm	MOQ Nos.	Cat. No.	List Price [₹]
36U X 600	1	ITE-OF-0636	On request
45U X 600	1	ITE-OF-0645	On request

MOQ - Minimum order quantity in nos.

Notes : 1) Above Open Rack configuration does not include Shelves, Doors and Covers. All other accessories prices will be extra and will be furnished on request.

2) The Prices above do not include Freight and this will be extra at actuals.

For more details, visit : www.bchindia.com/technorack

*List Prices are Ex-works Faridabad. For detail refer Enclosure Selling Terms & Conditions.

***GST to be charged extra**

Accessories for 19" Racks

Fixed Shelf/Stationary Shelf

- Compatible to keep monitor, servers, non 19" Networking & allied equipments.

Key-Board Tray

- Sliding & rotatory type.

Canteliver Shelf

- It can accommodate light weighted networking & allied equipments like modem, routers etc.

Equipment Support Angle

- "L" type angles. Useful to keep non 19" heavy duty equipment in rack mounting position.

Sliding Shelf

- Useful to keep servers, networking & allied equipment which are required to slide out for operational & other purpose.

Fans/Fan Tray

- 220V 90 CFM Capacity. Can be mounted at the top either directly or through Fan housing unit (Fan Tray)

6-Point 5A Hor. Power Strip

- All universal type socket along with on/off switch with fuse & indicator. Internal strips are made up of Berellium copper that has high rate of heat & mechanical tolerance.
- Other 5A or 5/15A Power strips have Indian style (Anchor) Sockets with on/off switch/MCB.

Castors

- 1-Set includes 4Nos. of castors, 2Nos. with foot operated brake & remaining 2 are free.

Levelling Feet

- 1-Set includes 4Nos. of Levelling Feet.

Stability Plate

- It Prevents the racks from toppling while taking out heavy duty servers.

Shelves

HSN Code : 8538

Description	Cat No.	List Price [₹]
Fixed Shelf (600mmD)	BIL-A-FS-L-06	1670
Fixed Shelf (800mmD)	BIL-A-FS-L-08	2585
Fixed Shelf (900mmD)	BIL-A-FS-L-09	2870
Fixed Shelf (1000mmD)	BIL-A-FS-L-10	3090
Key board tray (Sliding & Rotatory)	BIL-A-KB-06	4935
Canteliver Shelf (1U)	BIL-A-CS-1	1000
Canteliver Shelf (2U)	BIL-A-CS-2	1480
Equipment Support Angle (600mmD)	BIL-A-ESA-06	630
Equipment Support Angle (800mmD)	BIL-A-ESA-08	710
Equipment Support Angle (900mmD)	BIL-A-ESA-09	875
Equipment Support Angle (1000mmD)	BIL-A-ESA-10	1020
Sliding Shelf (900mmD)	BIL-A-SS-09	4935
Sliding Shelf (1000mmD)	BIL-A-SS-10	5120

Thermal Management

HSN Code : 8538

Description	Cat No.	List Price [₹]
1-Fan (Direct mounted)	BIL-A-SF	1670
Fan-tray with 2-Fans (FHU)	BIL-A-FHU-2FANS	3565
Fan-tray with 4-Fans (FHU)	BIL-A-FHU-4FANS	6205

Cable Management

HSN Code : 8538

Description	Cat No.	List Price [₹]
Horizontal Cable Manager (1U)	BIL-A-HCM-1U	400
Horizontal Cable Manager (2U)	BIL-A-HCM-2U	495
Vertical Cable Manager (24U)	BIL-A-VCM-24U	630
Vertical Cable Manager (30U)	BIL-A-VCM-30U	795
Vertical Cable Manager (36U)	BIL-A-VCM-36U	905
Vertical Cable Manager (42U)	BIL-A-VCM-42U	1000
Vertical Cable Manager (45U)	BIL-A-VCM-45U	1095

Power Management

HSN Code : 8538

Description	Cat No.	List Price [₹]
6-Point 5Amp Horizontal Power Strip (19")	BIL-A-HPS-5AMP	1635
5-Point 5/15Amp Horizontal Power Strip (19")	BIL-A-HPS-15AMP	2175
12-Point 5Amp Vertical Power Strip	BIL-A-12VPS-5AMP	3180
10-Point 5/15Amp Vertical Power Strip	BIL-A-10VPS-15AMP	3645
Earth continuity Kit (Earthing Kit)	BIL-A-ECT	1240

Stability Management

HSN Code : 8538

Description	Cat No.	List Price [₹]
Castors (1-Set) Heavy Duty	BIL-A-CAS-HD	5955
Castors (1-Set) Light Duty	BIL-A-CAS	4740
Levelling Feet (1-Set)	BIL-A-LF	810

Miscellaneous

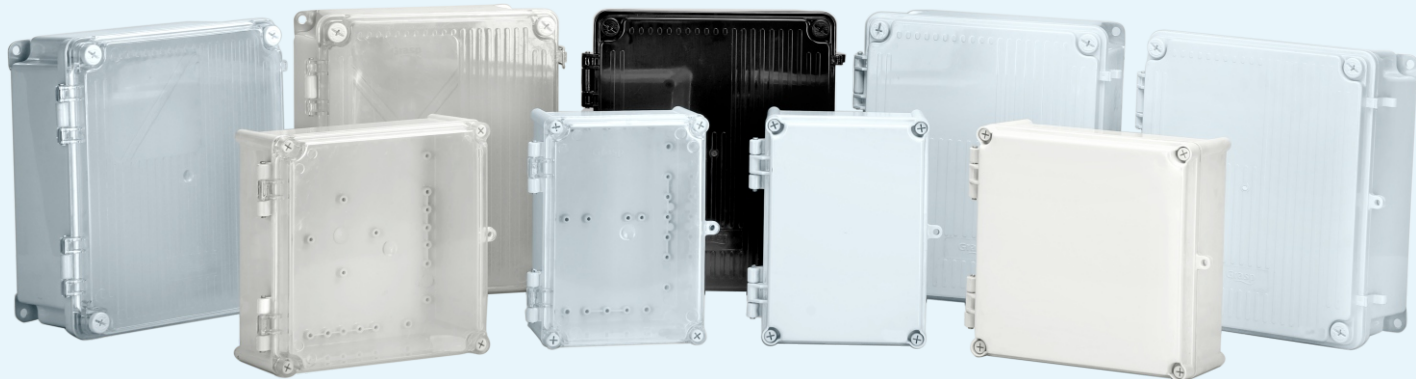
HSN Code : 8538

Description	Cat No.	List Price [₹]
BAYING KIT	BIL-A-BK	590
BLANKING PANEL (1U)	BIL-A-BP-1U	280
BLANKING PANEL (2U)	BIL-A-BP-2U	370
BLANKING PANEL (3U)	BIL-A-BP-3U	460
BLANKING PANEL (4U)	BIL-A-BP-4U	570
BLANKING PANEL (5U)	BIL-A-BP-5U	640
Captive H/w (set of 10)	BIL-A-Captive-M6	280
Wallmounting H/w (set of 4)	BIL-A-WALLMOUNTHW	290

Notes : Packing & forwarding will be extra if accessories are ordered separately.

*List Prices are Ex-works Faridabad. For detail refer Enclosure Selling Terms & Conditions.

***GST to be charged extra**



Technical Particulars :

- Enclosure with In built hinges for front door
- Pad locking provision for front door
- Suitable for wall & pole mounting
- Front door locked with rust proof hardware
- Silicon Gasket between enclosure and front door for sealing
- Protection Category IP-67

Type-1 (Inbuilt Hinged Door Enclosure)

Size (WxHxD) mm	MOQ	Box & Cover both in ABS		Box in ABS & Cover in PC(TR)		Box & Cover both in PC	
		Cat No.	List Price[₹]	Cat No.	List Price[₹]	Cat No.	List Price[₹]
210X257X90	17	BIL-AB-1.01	1375	BIL-AP-1.01	1520	BIL-PC-1.01	1675
225X275X105	17	BIL-AB-1.02	1415	BIL-AP-1.02	1575	BIL-PC-1.02	1720
200X280X140	12	BIL-AB-1.03	1660	BIL-AP-1.03	1835	BIL-PC-1.03	2010
280X280X130	8	BIL-AB-1.04	1965	BIL-AP-1.04	2175	BIL-PC-1.04	2375
300X350X146	6	BIL-AB-1.05A	2780	BIL-AP-1.05A	3090	BIL-PC-1.05A	3405
300X350X205	4	BIL-AB-1.05B	3005	BIL-AP-1.05B	3335	BIL-PC-1.05B	3675
644X674X277	1	NA	-	NA	-	BIL-PC-1.06	20005

Technical Particulars :

- Plain walled enclosures came along with front removable Cover
- Rust proof polyamide screw for front cover
- Equipped with parallel inner bush ribs for din channels Self-tapping screws
- Silicon Gasket between enclosure and front cover for sealing
- Protection Category IP-67

Type-2 (Plain Walled Industrial Enclosure)

Size (WxHxD) mm	MOQ	Box & Cover both in ABS		Box in ABS & Cover in PC(TR)		Box & Cover both in PC	
		Cat No.	List Price[₹]	Cat No.	List Price[₹]	Cat No.	List Price[₹]
130X180X100	40	BIL-AB-2.00A	840	BIL-AP-2.00A	915	BIL-PC-2.00A	995
180X180X100	26	BIL-AB-2.01A	985	BIL-AP-2.01A	1080	BIL-PC-2.01A	1175
180X180X138	16	BIL-AB-2.01	1115	BIL-AP-2.01	1215	BIL-PC-2.01	1325
180X240X138	16	BIL-AB-2.02	1385	BIL-AP-2.02	1520	BIL-PC-2.02	1660
240X320X138	10	BIL-AB-2.03	2050	BIL-AP-2.03	2265	BIL-PC-2.03	2485
320X420X138	6	BIL-AB-2.04	3160	BIL-AP-2.04	3500	BIL-PC-2.04	3835
320X420X210	4	BIL-AB-2.04B	4035	BIL-AP-2.04B	4415	BIL-PC-2.04B	4790
420X640X160	3	BIL-AB-2.05A	5815	BIL-AP-2.05A	6525	BIL-PC-2.05A	7240
420X640X210	2	NA	-	NA	-	BIL-PC-2.05B	8830
380X640X230	2	NA	-	NA	-	BIL-PC-2.06	7180

Technical Particulars :

- Modular in nature and ideal for LV compartmentalized Panel
- Knock outs on box walls for bus bar and cables routing
- Molded silicon push lock jointing kits to maintain IP rating of enclosure After joining each other
- Silicon Gasket between enclosure and front cover for sealing
- Can be joined in modules to make any size of electrical LV panel
- Protection Category IP-67

Type-3 (Modular Panel Enclosure)

Size (WxHxD) mm	MOQ	Box & Cover both in ABS		Box in ABS & Cover in PC(TR)		Box & Cover both in PC	
		Cat No.	List Price[₹]	Cat No.	List Price[₹]	Cat No.	List Price[₹]
150X300X135	13	BIL-AB-3.01A	2195	BIL-AP-3.01A	2395	BIL-PC-3.01A	2595
150X300X210	12	BIL-AB-3.01B	2585	BIL-AP-3.01B	2820	BIL-PC-3.01B	3050
300X300X210	4	BIL-AB-3.02	3570	BIL-AP-3.02	3925	BIL-PC-3.02	4275
300X450X210	4	BIL-AB-3.03	4360	BIL-AP-3.03	4790	BIL-PC-3.03	5230
300X600X210	6	BIL-AB-3.04	5395	BIL-AP-3.04	5965	BIL-PC-3.04	6525

*List Prices are Ex-works Faridabad. For detail refer Enclosure Selling Terms & Conditions.

*GST to be charged extra

www.bchindia.com



Type-4 (Junction Boxes)

Technical Particulars :

- Equipped with multiple knockouts to accommodate different size of cables
- Front cover fixes with SS304 screws
- No of inner bush for din rail fixing
- Silicon Gasket between enclosure and front cover for sealing
- Outside bushes provided to mount box without tampering enclosures to maintain IP rating
- Protection Category IP-67

Size (WxHxD) mm	MOQ	Box & Cover both in ABS		Box in ABS & Cover in PC(TR)		Box & Cover both in PC	
		Cat No.	List Price[₹]	Cat No.	List Price[₹]	Cat No.	List Price[₹]
100X100X60	160	BIL-AB-4.01B	380	BIL-AP-4.01B	405	BIL-PC-4.01B	430
120X120X70	120	BIL-AB-4.02B	490	BIL-AP-4.02B	530	BIL-PC-4.02B	570
120X150X80	80	BIL-AB-4.03B	605	BIL-AP-4.03B	660	BIL-PC-4.03B	710
140X140X100	50	BIL-AB-4.04B	710	BIL-AP-4.04B	770	BIL-PC-4.04B	830
140X180X100	38	BIL-AB-4.05B	780	BIL-AP-4.05B	850	BIL-PC-4.05B	925
160X210X100	32	BIL-AB-4.06	955	BIL-AP-4.06	1035	BIL-PC-4.06	1115
210X260X120	17	BIL-AB-4.07	1580	BIL-AP-4.07	1865	BIL-PC-4.07	2145

Technical Particulars :

- Suitable for wall or Pole mounting
- Polycarbonate hinged window for easy operation of MCB
- Number of horizontal inner bush for din rail fixing
- Rust proof SS304 screw for front cover fixing
- Silicon Gasket between enclosure and front cover for sealing
- Front cover fixed with rust proof SS304 screws
- Protection Category IP-65

Type-5 (Power Distribution Boxes With Poly Carbonate Window)

Size (WxHxD) mm	MOQ	Box & Cover both in ABS		Box in ABS & Cover in PC(TR)		Box & Cover both in PC	
		Cat No.	List Price[₹]	Cat No.	List Price[₹]	Cat No.	List Price[₹]
98X138X75	80	NA	-	BIL-AP-5.01 Eco	965	NA	-
76X170X95	60	NA	-	BIL-AP-5.01B Eco	870	NA	-
100X225X100	40	NA	-	BIL-AP-5.01	1360	NA	-
115X160X75	50	NA	-	BIL-AP-5.02 Eco	1240	NA	-
118X170X95	50	NA	-	BIL-AP-5.02B Eco	1095	NA	-
150X225X100	25	NA	-	BIL-AP-5.02	1755	NA	-
225X225X100	20	NA	-	BIL-AP-5.03	2245	NA	-
225X300X100	17	NA	-	BIL-AP-5.04	2735	NA	-
300X400X100	8	NA	-	BIL-AP-5.05 A	4045	NA	-
300X400X100	8	NA	-	BIL-AP-5.05	5005	NA	-
300X600X100	5	NA	-	BIL-AP-5.06	7150	NA	-

Type-6 (Enclosure With External Mounting)

Technical Particulars :

- Provision of outside mounting on enclosure
- Suitable for heavy duty application like Bus bars, industrial plugs sockets & Solar application
- Number of horizontal inner bush for din rail fixing
- Rust proof SS304 screw for front cover fixing
- Silicon Gasket between enclosure and front cover for sealing
- Protection Category IP-67

Size (WxHxD) mm	MOQ	Box & Cover both in ABS		Box in ABS & Cover in PC(TR)		Box & Cover both in PC	
		Cat No.	List Price[₹]	Cat No.	List Price[₹]	Cat No.	List Price[₹]
98X138X68	80	BIL-AB-6.01	465	NA	-	NA	-
98X200X60	60	BIL-AB-6.02A	605	BIL-AP-6.02A	655	NA	-
98X200X82	50	BIL-AB-6.02B	720	BIL-AP-6.02B	780	NA	-
138X138X82	50	BIL-AB-6.03	625	BIL-AP-6.03	670	NA	-
138X225X68	40	BIL-AB-6.04	860	NA	-	NA	-
160X225X100	35	BIL-AB-6.05	1175	NA	-	NA	-
225X225X115	20	BIL-AB-6.06A	1045	BIL-AP-6.06A	1125	NA	-
225X225X180	12	BIL-AB-6.06B	1300	BIL-AP-6.06B	1405	NA	-
225X300X115	17	BIL-AB-6.07	1830	BIL-AP-6.07	2020	NA	-
300X400X100	8	BIL-AB-6.08	2945	NA	-	NA	-
300X600X100	5	BIL-AB-6.09	4175	NA	-	NA	-

*List Prices are Ex-works Faridabad. For detail refer Enclosure Selling Terms & Conditions.

*GST to be charged extra

Type-7 (Enclosure With External Mounting)

Technical Particulars :

- Specially designed for IT, electronics and automation industrial solutions
- Available in 31 different sizes
- Provision of PCB & Electronics component mounting
- Rust proof SS304 screw for front cover fixing
- Silicon Gasket between enclosure and front door for sealing
- Suitable for wall & pole mounting
- Protection Category IP-67

Size (WxHxD) mm	MOQ	Box & Cover both in ABS		Box in ABS & Cover in PC(TR)		Box & Cover both in PC	
		Cat No.	List Price[₹]	Cat No.	List Price[₹]	Cat No.	List Price[₹]
56X80X40	100	BIL-AB-7.01	330	NA	-	BIL-PC-7.01	370
100X100X62	80	BIL-AB-7.02	500	BIL-AP-7.02	540	NA	-
65X115X40	100	BIL-AB-7.03	380	NA	-	NA	-
80X125X56	100	BIL-AB-7.04	490	NA	-	NA	-
125X125X62	60	BIL-AB-7.05	605	BIL-AP-7.05	665	NA	-
90X134X36	100	BIL-AB-7.06A	430	NA	-	NA	-
90X134X56	100	BIL-AB-7.06B	560	NA	-	NA	-
120X140X76	80	BIL-AB-7.07	780	BIL-AP-7.07	850	NA	-
120X140X100	60	BIL-AB-7.07B	810	BIL-AP-7.07B	890	NA	-
150X150X75	50	BIL-AB-7.08	650	NA	-	NA	-
132X150X40	50	BIL-AB-7.08A	890	BIL-AP-7.08A	975	BIL-PC-7.08A	1055
150X150X100	50	BIL-AB-7.08C	985	BIL-AP-7.08C	1075	BIL-PC-7.08C	1165
115X160X55	60	BIL-AB-7.09A	770	NA	-	NA	-
115X160X75	60	BIL-AB-7.09B	840	NA	-	NA	-
125X170X66	60	BIL-AB-7.10A	910	BIL-AP-7.10A	On request	BIL-PC-7.10A	1010
125X170X115	36	BIL-AB-7.10B	1000	NA	-	BIL-PC-7.10B	1115
124X175X36	60	BIL-AB-7.11	500	NA	-	NA	-
160X180X75	45	BIL-AB-7.12	955	NA	-	NA	-
125X205X75	18	BIL-AB-7.13	935	NA	-	NA	-
80X210X55	60	BIL-AB-7.13A	840	NA	-	NA	-
125X230X90	20	BIL-AB-7.14	975	NA	-	NA	-
70X240X92	56	BIL-AB-7.15	965	NA	-	NA	-
200X250X90	16	BIL-AB-7.16	1990	NA	-	NA	-
176X260X92	16	BIL-AB-7.18	1640	BIL-AP-7.18	1795	BIL-PC-7.18	1950
225X315X90	16	BIL-AB-7.19	1155	NA	-	NA	-
260X350X90	10	BIL-AB-7.20	2535	NA	-	NA	-
58X84X33	100	BIL-AB-7.01L	305	BIL-AP-7.01L	325	NA	-
70X100X50	100	BIL-AB-7.02L	440	BIL-AP-7.02L	470	BIL-PC-7.02L	500
80X160X55	84	BIL-AB-7.03L	730	BIL-AP-7.03L	780	NA	-



*List Prices are Ex-works Faridabad. For detail refer Enclosure Selling Terms & Conditions.

*GST to be charged extra

www.bchindia.com





BCH

Price List

General Terms & Conditions

Prices are subject to change without any prior notice and will be applicable as prevailing at the time of dispatch.

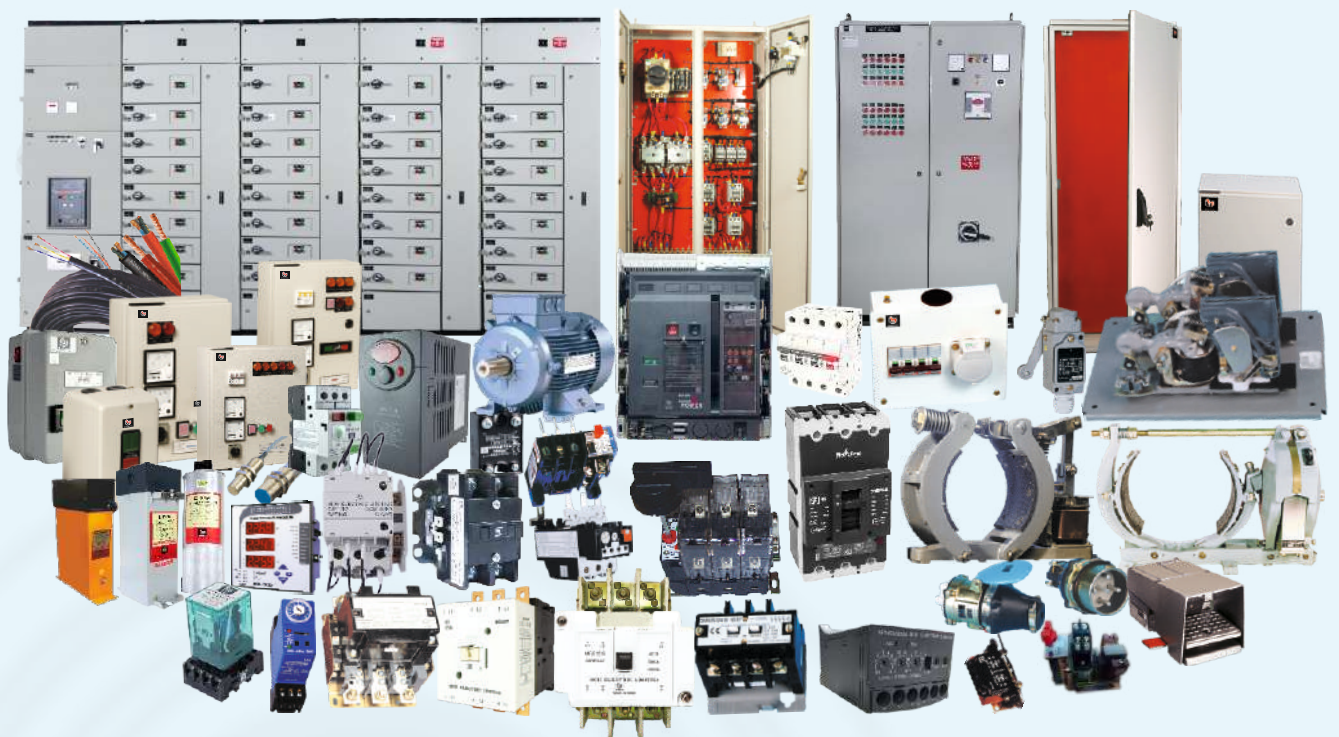
- The prices are ex-works basis..
- The prices given in this list are effective as on date and are subject to change without notice.
- The List Prices (LP) mentioned are exclusive of GST.
- The duties, taxes and other statutory levies are based on rates prevailing at the time of billing. Any subsequent revision of those rates having retrospective effective shall be to customer's account.
- In case where any GST exemption has been claimed, the purchaser is responsible for providing the necessary GST exemption form within the specified period, failing which the purchaser would be liable for the payment of full GST plus applicable interest and penalties
- All Prices are in Indian Rupees (₹).
- Alteration made after receipt of confirmation of order are subject to price & delivery revisions and any other expenses or levies
- The dispute, if any, will be resolved mutually by discussion. However, if no settlement is forthcoming then, the Courts at New Delhi shall only have territorial jurisdiction to hear and decide the dispute.

Warranty

All products unless specifically mentioned otherwise, shall have warranty against manufacturing defects only for a period of 12* months from the date of invoice or 18 months from the date of manufacturing whichever is later. The Company shall not be liable to give warranty replacement / service for the products damaged due to negligence or wrong application of the product by the customer.

* Proof of purchase to be retained to avail warranty.

a strong commitment
to serve better
always ...



**Power Distribution | Industrial Control & Protections | Industrial Brakes
Industrial Automation & Safety | Starters | Enclosures | Wires & Cables | FDP
Power Quality & Energy Management | Electric Motors | Switchboards & Solutions**



**BCH
ELECTRIC
LIMITED**

www.bchindia.com

- Power Distribution
- Final Distribution Products
- Industrial Control & Protection
- Industrial Brakes
- Industrial Automation & Safety
- Starters
- Enclosures
- Wires & Cables
- Power Quality & Energy Management
- Electric Motors
- Switchboards & Solutions
- Power Bus Duct



BCH ELECTRIC LIMITED



www.bchindia.com



1800-103-9262

customercare@bchindia.com

Visit us at : www.bchindia.com

Registered & Corporate Office : 1105, New Delhi House, 27, Barakhamba Road, New Delhi - 110 001 Tel. : 91-11- 43673100

CIN : U31103DL1965PLC425953, **Customercare No.** 1800-103-9262, **E-mail :** marketing@bchindia.com

Works 1 : 20/4, Mathura Road, Faridabad - 121 006 (Haryana) Tel. : 0129-4063000/4293000 Fax : 0129-2304016

Works 2 : 64-68, Sector-7, IIE, Pant Nagar, Rudrapur, Udham Singh Nagar - 263 153 (Uttarakhand) Tel. : 05944-250214/16 Fax : 05944-250215

Sales Offices :

Ahmedabad
401, Shilp Zeveri,
Beside Shyamal Iconic,
Above Westside,
Shyamal Cross Road,
Ahmedabad - 380015
E-mail: ahmedabad@bchindia.com

Bangalore
2nd Floor, 130/5,
K.H. Road (Double road),
Bangalore - 560 027
Tel.: 080-41144879 / 22236759
E-mail: bangalore@bchindia.com

Bhubaneswar
Mallick Commercial
Complex Plot No.: A/69, unit - 3
Bhubaneswar - 751 001
Tel.: 0674-2380988
E-mail.: bhubaneswar@bchindia.com

Chandigarh (Panchkula)
SCO -270, 2nd Floor,
Sector-16, Panchkula
Haryana-134 113
Tel.: 0172-5078957 / 5049905
E-mail.: chandigarh@bchindia.com

Chennai
Flat No. 3A, 3rd Floor,
Sree Apartments,
No.508, TTK Road,
Alwarpet, Chennai 600 018
Tel.: 044-24337046, 24337047
E-mail: chennai@bchindia.com

Coimbatore
87, Dr. Nanjappa Road,
Coimbatore - 641 018
Tel. : 0422-2305311 / 2302599
E-mail: coimbatore@bchindia.com

Delhi 1
801, Akash Deep Building,
28A, Barakhamba Road,
New Delhi - 110 001
Tel. : 011-23313878 / 43518200
E-mail : delhi@bchindia.com

Delhi 2
710, Deepali Building, 92
Nehru Place, New Delhi - 110
019 Tel. : 011-45720334
E-mail: delhi2@bchindia.com

Dehradun
8, Co-operative Industrial Estate,
Patel Nagar, Dehradun-248001
E-mail: dehradun@bchindia.com

Faridabad
20/4, Mathura Road,
Faridabad - 121 006 (Haryana)
Tel.: 0129-4293009
E-mail : faridabad@bchindia.com

Hyderabad
1-8-303/48/13/102, Arya One,
2nd Floor, P. G. Road,
Secunderabad - 500 003
Tel. : 040-66206263/27890306
Fax : 040-66207273
E-mail : hyderabad@bchindia.com

Indore
330-331, Indraprastha Tower,
3rd Floor, 6, M.G. Road,
Indore - 452 001
Tel. : 0731-2510011 / 2510012
E-mail : indore@bchindia.com

Jaipur
25, Hathroi, Gopalbari,
Jaipur - 302 001
Tel. : 0141-2363521
E-mail : jaipur@bchindia.com

Jamshedpur
A.J. Tower, 2B,
2nd Floor, R-Road, Bistupur,
Jamshedpur - 831 001
E-mail : jamshedpur@bchindia.com

Kolkata
Block 1E, 216,
Acharya Jagadish Chandra Bose
Road, Kolkata - 700 017
Tel. : 033-22871728 / 46021884
E-mail : kolkata@bchindia.com

Lucknow
Shop No. 3, First Floor,
Tower T-10, Millennium Place IBB - 2,
Sushant Golf City, Sultanpur Road,
Lucknow U.P. - 226030
Tel. : 0522-4025597/4025997
E-mail : lucknow@bchindia.com

Ludhiana
S.C.O.- 18, 2nd Floor,
Feroze Gandhi Market,
Ludhiana - 140 001
Tel. : 0161-5021807/5022808
E-mail : ludhiana@bchindia.com

Madurai
12, Parvathi Plaza-3rd Floor,
70 Feet Road, Ellis Nagar
Madurai-625016, Tamilnadu
Email: madurai@bchindia.com

Mumbai
A-151, Mittal Tower,
Nariman Point,
Mumbai - 400 021
Tel. : 022-22822947/22850162
Fax : 022-22822858
E-mail : mumbai@bchindia.com

Patna
No.703, 7th Floor, Luv Kush
Tower, Exhibition Road,
Patna - 800001

Pune
8, Sarosh Bhavan,
16-B/1, Dr. Ambedkar Road,
Pune - 411 001
Tel. : 020-41210002
E-mail : pune@bchindia.com

Raipur
6th Floor, Office No. 607,
Babylon Capital, Near Oswal
Petrol Pump, VIP Chowk,
G.E. Road, Raipur - 492 006
Tel. : 0771- 4045053
E-mail : raipur@bchindia.com

Vadodra
301, Third Floor, "Florence Classic",
10, Ashapuri Co-Op. Hsg. Soc. Ltd., Opp. VUDA
Housing, Near Cow Circle, Akota, Vadodra - 390 020
Tel. : 0265-2345068/2345069
Telefax : 0265-2345068,
E-mail : vadodra@bchindia.com

Other Branch Locations

Cochin : cochin@bchindia.com, **Guwahati :** guwahati@bchindia.com, **Vishakapatnam :** vizag@bchindia.com, **Surat :** surat@bchindia.com, **Trichy :** Trichy@bchindia.com

Resident Engineer Locations

Agra	Bhopal	Hospet	Kanpur	Muzaffarnagar	Rajahmundry	Silliguri	Varanasi
Ahmednagar	Calicut	Hubli	Karimnagar	Nanded	Ranchi	Solapur	Vijaywada
Ambala	Goa	Idukki	Karnal	Nashik	Rourkela	Srinagar	Vishakapatnam
Anantapur	Gulbarga	Jabalpur	Kota	Panipat	Rudarpur	Trivendrum	Vellore
Ankleshwar	Gurgaon	Jalandhar	Kurnool	Patna	Salem	Tirunelveli	Vilupuram
Aurangabad	Haridwar	Jodhpur	Midnapore	Puducherry	Sikar	Udaipur	Warangal
Bhiwadi	Hisar	Kashipur	Mahua	Rajkot	Silchar	Vapi	Yamunanagar

Since product improvement is a continuous process, the data furnished in this brochure may undergo revision without prior notice.